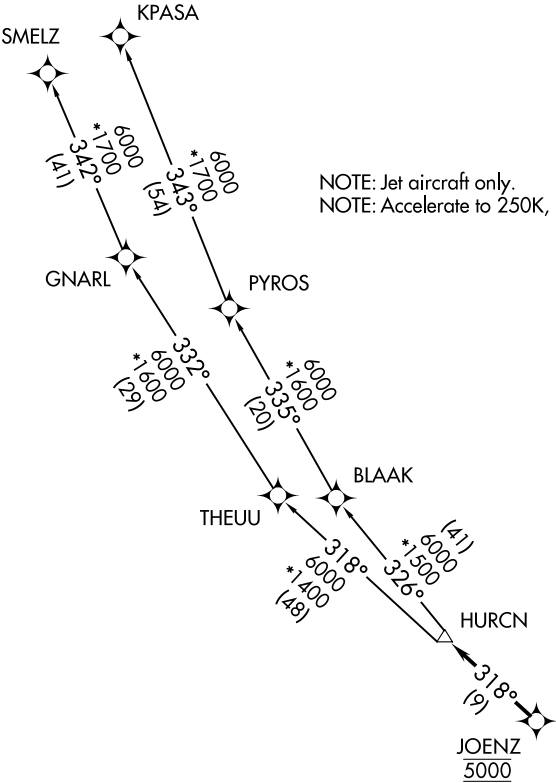
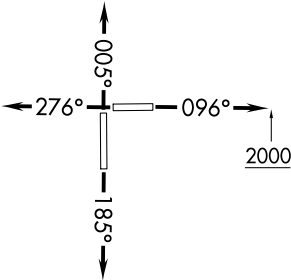


RNAV-1 DME/DME/IRU or GPS.	TOP ALTITUDE: ASSIGNED BY ATC	AWOS-3 118.375 CTAF 122.8 MIAMI DEP CON 125.5 354.1
RADAR required.		



TAKEOFF MINIMUMS

- Rwy 10: Standard with minimum climb of 500' per NM to 2400.
- Rwy 18: Standard with minimum climb of 500' per NM to 1800.
- Rwy 28: Standard with minimum climb of 500' per NM to 1900.
- Rwy 36: Standard with minimum climb of 500' per NM to 2200.



NOTE: Chart not to scale.

(NARRATIVE ON FOLLOWING PAGE)



DEPARTURE ROUTE DESCRIPTION

TAKEOFF RUNWAY 10: Climb on heading 096° to 2000 then as assigned for RADAR vectors to cross JOENZ at 5000, thence. . .

TAKEOFF RUNWAY 18: Climb on heading 185° or as assigned for RADAR vectors to cross JOENZ at 5000, thence. . .

TAKEOFF RUNWAY 28: Climb on heading 276° or as assigned for RADAR vectors to cross JOENZ at 5000, thence. . .

TAKEOFF RUNWAY 36: Climb on heading 005° or as assigned for RADAR vectors to cross JOENZ at 5000, thence. . .

. . .on track 318° to HURCN, then on transition. Maintain ATC assigned altitude, expect clearance to filed altitude within 10 minutes after departure.

KPASA TRANSITION (HURCN3.KPASA)

SMELZ TRANSITION (HURCN3.SMELZ)

SE-3, 22 FEB 2024 to 21 MAR 2024

SE-3, 22 FEB 2024 to 21 MAR 2024