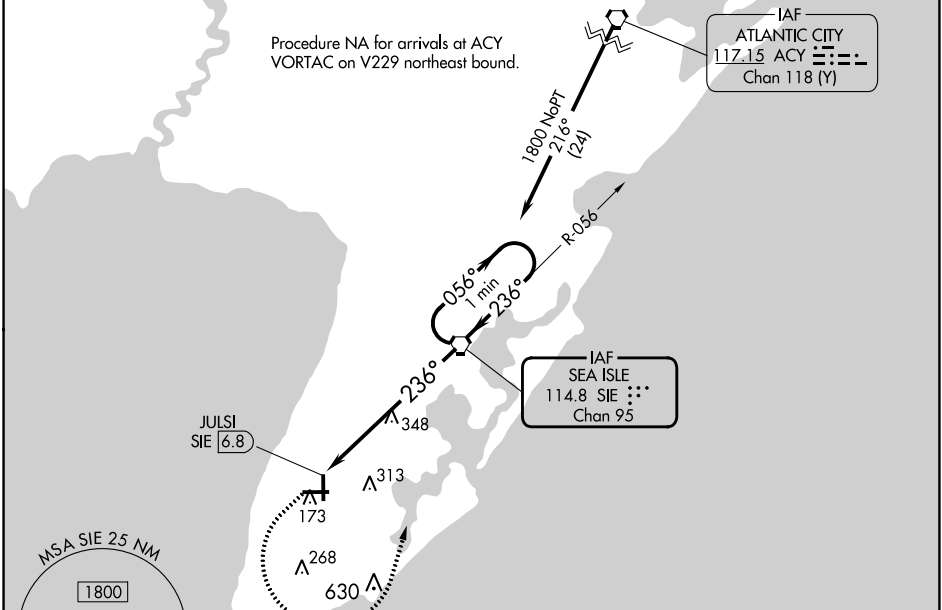


VORTAC SIE 114.8 Chan 95	APP CRS 236°	Rwy Idg TDZE Apt Elev	N/A N/A 22
--	------------------------	-----------------------------	---------------------------------------

VOR-A
CAPE MAY COUNTY (WWD)

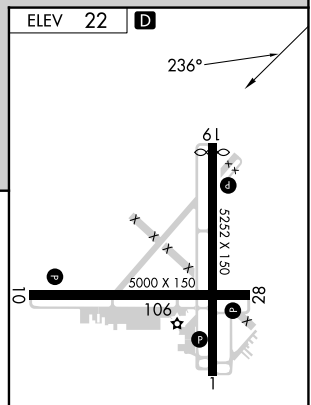
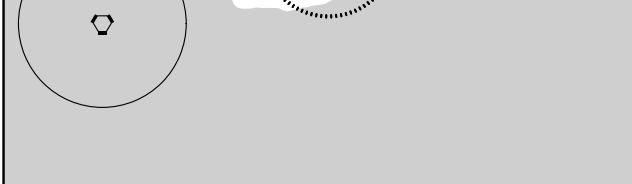
<p>▼ ▲</p> <p>Circling NA for Cats C and D NE of Rwy 19 and 28. Circling Rwy 1 NA at night.</p>	<p>MISSED APPROACH: Climb to 800 then climbing left turn to 1800 direct SIE VORTAC and hold.</p>
---	--

AWOS-3PT 118.275	ATLANTIC CITY APP CON 124.6 327.125	CLNC DEL 121.7	UNICOM 122.7 (CTAF) 0
----------------------------	---	--------------------------	---------------------------------



NE-2, 22 FEB 2024 to 21 MAR 2024

NE-2, 22 FEB 2024 to 21 MAR 2024



800	1800	SIE	
↑	↷	⬡	
One Minute Holding Pattern			

MIRL Rwy 10-28 **0**
HIRL Rwy 1-19 **0**

FAF to MAP 6.8 NM					
Knots	60	90	120	150	180
Min:Sec	6:48	4:32	3:24	2:43	2:16

CATEGORY	A	B	C	D	FAF to MAP 6.8 NM					
C CIRCLING	640-7/8 618 (700-7/8)	640-1 618 (700-1)	640-1 1/4 618 (700-1 1/4)	980-3 958 (1000-3)	Knots	60	90	120	150	180
					Min:Sec	6:48	4:32	3:24	2:43	2:16