

ILS or LOC Y RWY 33

LOC I-WRB 110.1	APCH CRS 326°	Rwy Idg 12,001 TDZE 275 Arpt Elev 294
---------------------------	-------------------------	--

AL-442 [USAF]

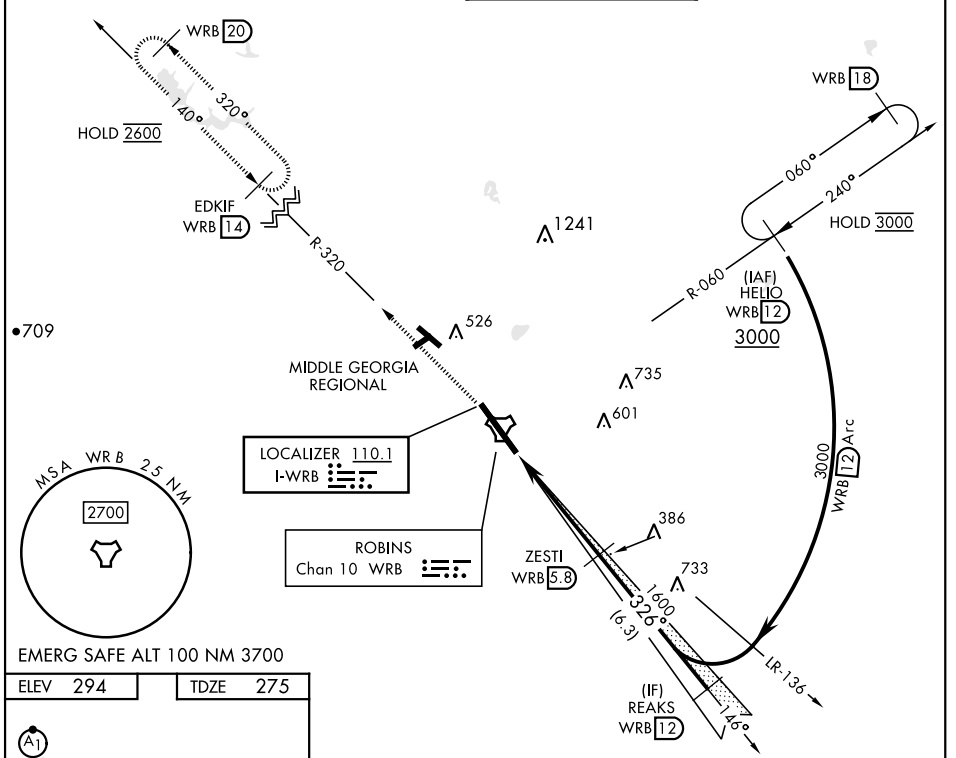
ROBINS AFB (KWRB)

▼ * When ALS inop, increase RVR to 40, vis to ¾ mile.
 ** When ALS inop, increase RVR to 55, vis to 1 mile.
 *** Circling NA SW of Rwy 15-33.

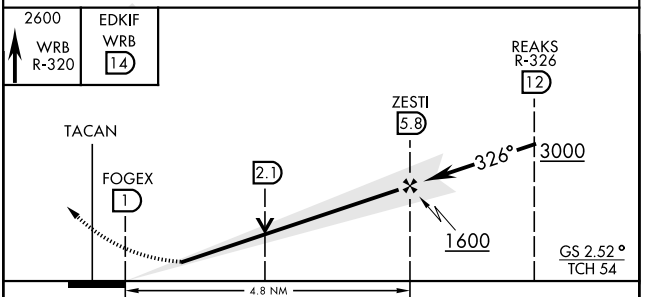
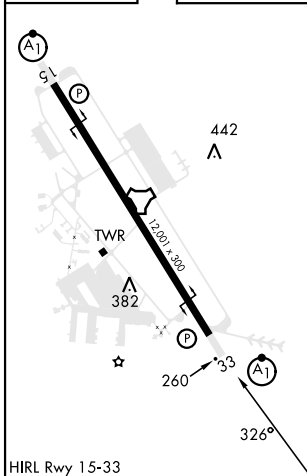


MISSED APPROACH: Climb To 2600 on WRB TACAN R-320 to EDKIF and hold.

ATIS 119.475 273.475	ATLANTA APP CON 124.2 279.6	TOWER 133.225 257.975	GND CON 121.85 275.8
--------------------------------	---------------------------------------	---------------------------------	--------------------------------



ELEV 294	TDZE 275
----------	----------



CATEGORY	A	B	C	D	E
S-ILS 33*	475/24		200	(200-½)	
S-LOC 33**	640/24	365 (400-½)	640/35		365 (400-¾)
CIRCLING ***	780-1	486 (500-1)	880-1½	960-2	1040-2¾
			586 (600-1½)	666 (700-2)	746 (800-2¾)

ILS or LOC Y RWY 33

SE-4, 22 FEB 2024 to 21 MAR 2024

SE-4, 22 FEB 2024 to 21 MAR 2024