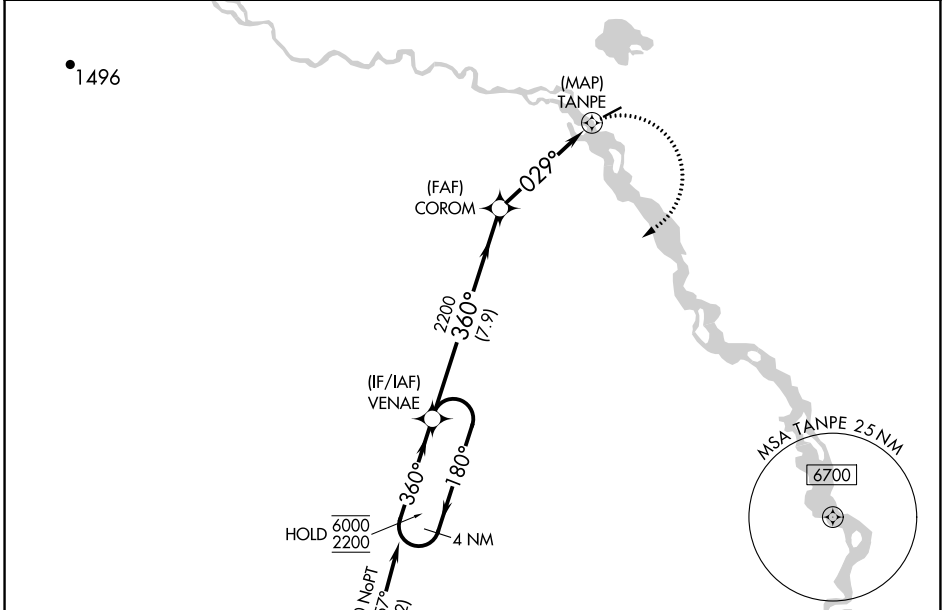


APP CRS	Rwy Idg	4000
029°	TDZE	572
	Apt Elev	574

RNAV (GPS) RWY 4

VENETIE (VEE) (PAVE)

RNP APCH-GPS.		MISSED APPROACH: Climbing right turn to 2200, direct VENAE and hold.
NA	Rwy 4 helicopter visibility reduction below 1 SM NA. Use Fort Yukon altimeter setting. Procedure NA at night.	
FYU/PFYU AWOS-3P 125.8	ANCHORAGE CENTER 135.0 225.4	CTAF 122.9

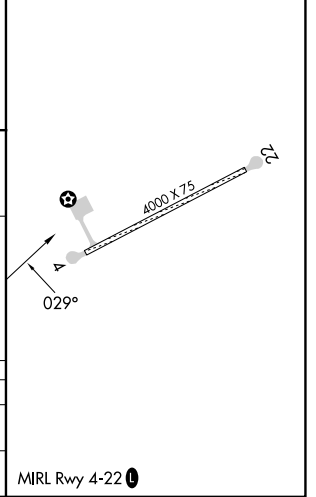
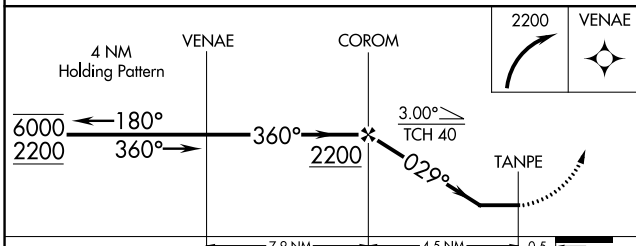


AK, 25 JAN 2024 to 21 MAR 2024

AK, 25 JAN 2024 to 21 MAR 2024

Procedure NA for arrivals at CURUP on airways B4 westbound and T273 southbound.

ELEV 574	TDZE 572
----------	----------



CATEGORY	A	B	C	D
LNVA MDA	1 220-1	648 (700-1)	1 220-1 $\frac{7}{8}$	648 (700-1 $\frac{7}{8}$)
CIRCLING	1 220-1	646 (700-1)	1 220-1 $\frac{7}{8}$	1 260-2 $\frac{1}{4}$
			646 (700-1 $\frac{7}{8}$)	686 (700-2 $\frac{1}{4}$)

MIRL RWY 4-22