

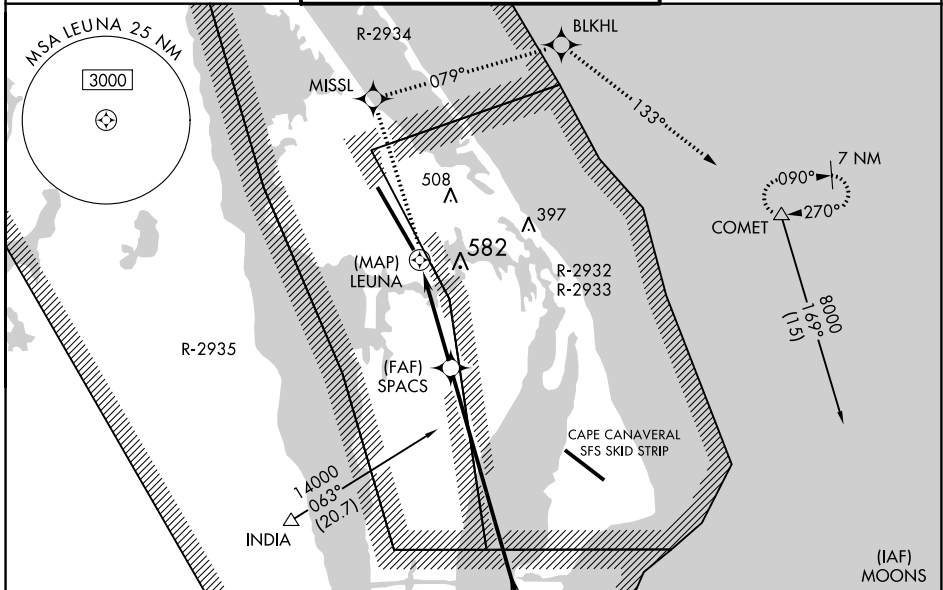
APP CRS	Rwy Idg	<b>15001</b>
<b>349°</b>	TDZE	<b>9</b>
	Apt Elev	<b>9</b>

# RNAV (GPS) RWY 33

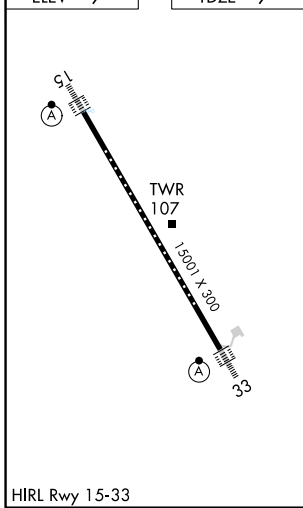
SPACE FLORIDA LAUNCH AND LANDING FACILITY (TTS)

RNP APCH-GPS.	ALSF-2	MISSED APPROACH: Climb to 8000 direct MISSL and right turn on track 079° to BLKHL and on track 133° to COMET and hold, continue climb-in-hold to 8000.
Rwy 33 helicopter visibility reduction below 1 SM NA. Inop table does not apply. Use Melbourne altimeter setting.		

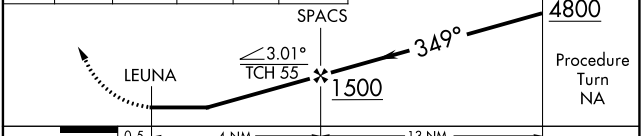
ORLANDO APP CON <b>134.95 281.425</b>	NASA TOWER ★ <b>128.55 (CTAF) 284.0</b>	GND CON <b>121.75</b>
--	--	--------------------------



ELEV 9	TDZE 9
--------	--------



8000	MISSL	BLKHL	COMET	ORRBT



CATEGORY	A	B	C	D	E
LNAV MDA	540-1 530 (600-1)		540-1¼ 530 (600-1¼)		
CIRCLING	540-1	531 (600-1)	1020-3		1011 (1100-3)

SE-3, 22 FEB 2024 to 21 MAR 2024

SE-3, 22 FEB 2024 to 21 MAR 2024