

WAAS CH <b>56612</b> <b>W18B</b>	APP CRS <b>181°</b>	Rwy Idg <b>6930</b> TDZE <b>32</b> Apt Elev <b>34</b>
--	------------------------	---

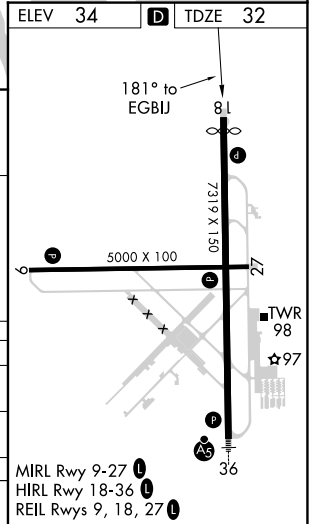
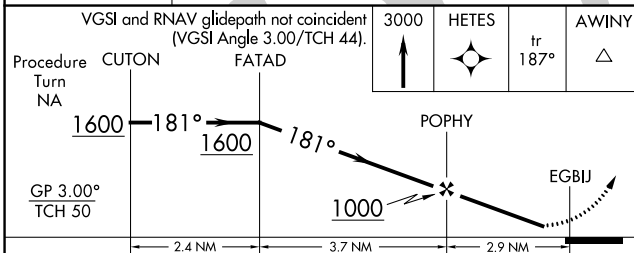
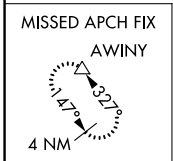
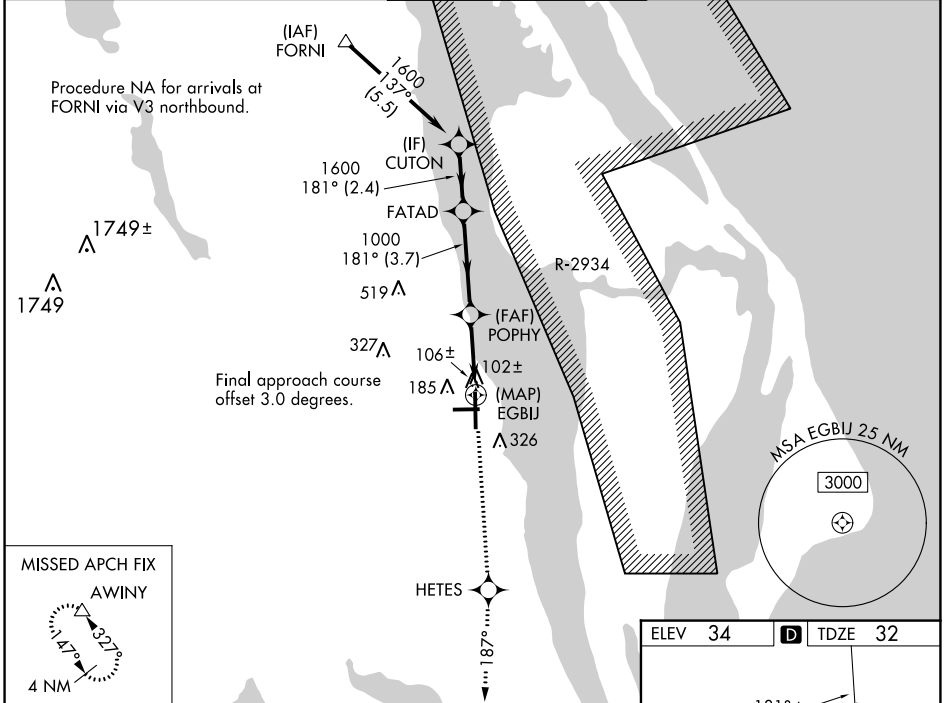
# RNAV (GPS) Z RWY 18

SPACE COAST RGNL (TIX)

▼ Baro-VNAV NA when using Melbourne altimeter setting. For uncompensated Baro-VNAV systems, LNAV/VNAV NA below -15°C (5°F) or above 47°C (116°F). DME/DME RNP-0.3 NA. Visibility reduction by helicopters NA. When control tower closed, use Melbourne altimeter setting.

MISSED APPROACH: Climb to 3000 direct HETES and via track 187° to AWINY and hold.

ATIS <b>120.625</b>	ORLANDO APP CON <b>134.95 281.425</b>	SPACE COAST TOWER ★ <b>118.9 (CTAF)</b> 0	GND CON <b>121.85</b>	UNICOM <b>122.95</b>
------------------------	--	--	--------------------------	-------------------------



CATEGORY	A	B	C	D
LPV DA		332-1	300 (300-1)	
LNAV/VNAV DA		377-1¼	345 (400-1¼)	
MELBOURNE ALTIMETER SETTING MINIMUMS				
LNAV/VNAV DA		437-1½	405 (500-1½)	

SE-3, 22 FEB 2024 to 21 MAR 2024

SE-3, 22 FEB 2024 to 21 MAR 2024