

WAAS CH <b>90535</b> <b>W17A</b>	APP CRS <b>174°</b>	Rwy Idg <b>4000</b> TDZE <b>600</b> Apt Elev <b>600</b>
--	------------------------	---

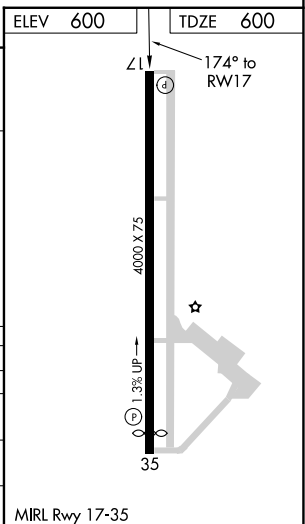
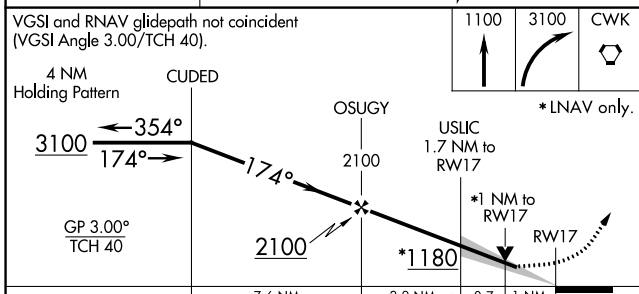
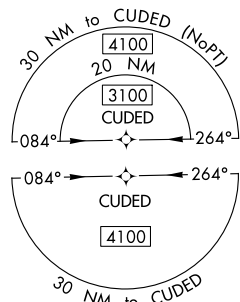
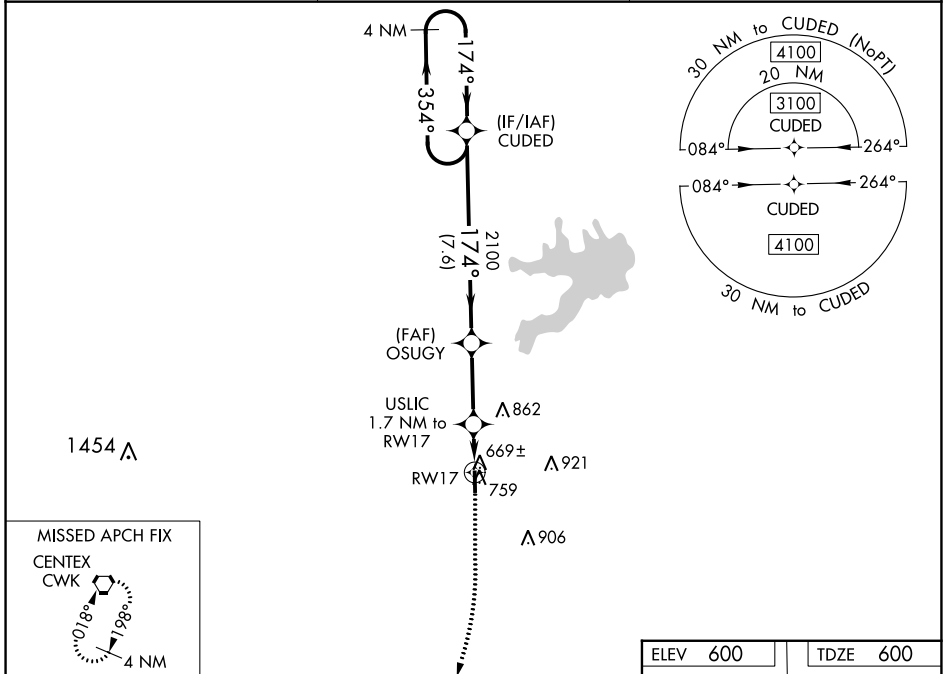
# RNAV (GPS) RWY 17

TAYLOR MUNI (T74)

**RNP APCH.**  
 ▼ For uncompensated Baro-VNAV systems, LNAV/VNAV NA below -16C or above 54C. When local altimeter setting not received, use Austin Exec altimeter setting and increase all DA to 914 feet and all MDA 40 feet. VDP and Baro-VNAV NA when using Austin Exec altimeter setting.  
 ▲

**MISSED APPROACH:** Climb to 1100 then climbing right turn to 3100 direct CWK VORTAC and hold.

AWOS-3PT <b>119.75</b>	AUSTIN APP CON <b>127.225 317.65</b>	UNICOM <b>122.8 (CTAF)</b>
---------------------------	---	-------------------------------



CATEGORY	A	B	C	D
LPV DA	882-7/8	282 (300-7/8)		NA
LNAV/VNAV DA	882-7/8	282 (300-7/8)		NA
LNAV MDA	960-1	360 (400-1)		NA
<b>CIRCLING</b>	1100-1	500 (500-1)		NA

SC-3, 22 FEB 2024 to 21 MAR 2024

SC-3, 22 FEB 2024 to 21 MAR 2024

MIRL Rwy 17-35

VORTAC CWK <b>112.8</b> Chan <b>75</b>	APP CRS <b>194°</b>	Rwy Idg <b>4000</b> TDZE <b>600</b> Apt Elev <b>600</b>
--	------------------------	---

# VOR RWY 17

TAYLOR MUNI (T74)

**DME required.**

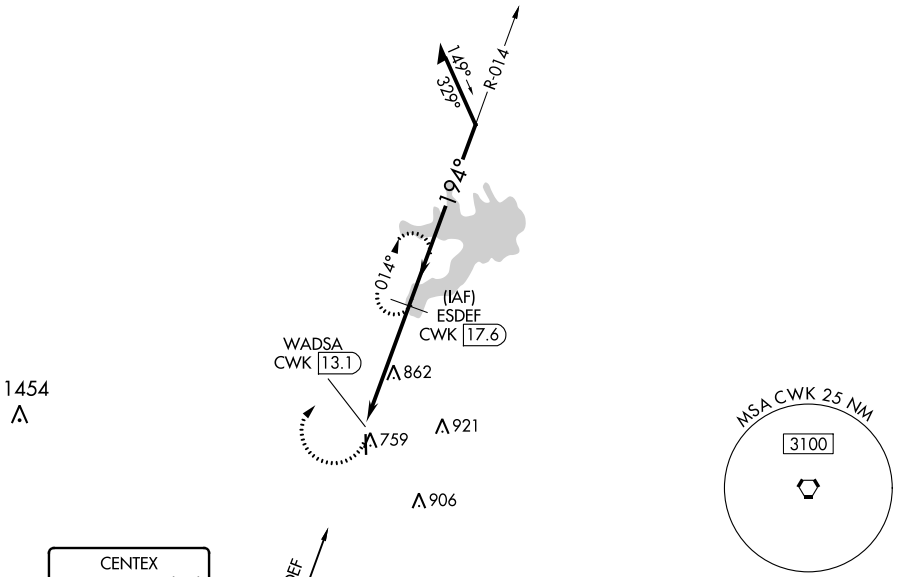
**⚠** Circling Rwy 35 NA at night. Rwy 17 helicopter visibility reduction below 3/4 SM NA. When local altimeter setting not received, use Austin Exec altimeter setting and increase all MDA 40 feet. VDP NA when using Austin Exec altimeter setting.

**MISSED APPROACH:** Climbing right turn to 2500 on CWK VORTAC R-014 to ESDEF/17.6 DME and hold.

AWOS-3PT  
**119.75**

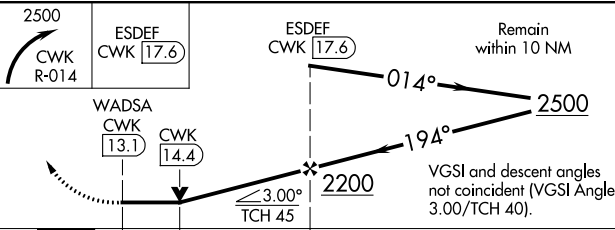
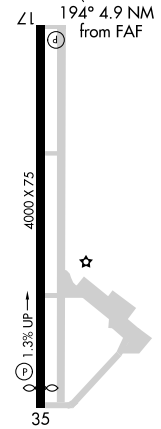
AUSTIN APP CON  
**127.225 317.65**

UNICOM  
**122.8 (CTAF)**



CENTEX  
**112.8** CWK  
Chan 75

ELEV 600 | TDZE 600



CATEGORY	A	B	C	D
S-17	1180-1	580 (600-1)		NA
<b>C</b> CIRCLING	1180-1	580 (600-1)		NA

MIRL Rwy 17-35

SC-3, 22 FEB 2024 to 21 MAR 2024

SC-3, 22 FEB 2024 to 21 MAR 2024