

**TOP ALTITUDE:  
ASSIGNED BY ATC**

TAKEOFF MINIMUMS  
Rwys 17, 35: Standard.

UNICOM (CTAF)  
122.8  
AUSTIN DEP CON  
127.225 317.65

SAN ANGELO  
SJT

FL180  
293°  
(91)

AEROZ

NOTE: RADAR required.  
NOTE: DME/DME/IRU or GPS required.  
NOTE: RNAV 1.

AMUSE  
5000



NOTE: Chart not to scale.

**DEPARTURE ROUTE DESCRIPTION**

TAKEOFF RUNWAY 17: Climb on heading 174° or as assigned by ATC for vectors to cross AMUSE at or above 5000, thence....

TAKEOFF RUNWAY 35: Climb on heading 354° or as assigned by ATC for vectors to cross AMUSE at or above 5000, thence....

... on track 293° to AEROZ, then on SAN ANGELO TRANSITION. Maintain altitude assigned by ATC. Expect filed altitude 10 minutes after departure.

SAN ANGELO TRANSITION (AEROZ2.SJT)

AEROZ TWO DEPARTURE (RNAV)  
(AEROZ2.AEROZ) 22ARR21

TAYLOR, TEXAS  
TAYLOR MUNI (T74)

(AEROZ2.AEROZ) 21112  
AEROZ TWO DEPARTURE (RNAV) AL-6938

TAYLOR MUNI (T74)  
TAYLOR, TEXAS

(BNDIA3.BNDIA) 21112

AL-6938 (FAA)

TAYLOR MUNI (T74)

# BNDIA THREE DEPARTURE (RNAV)

TAYLOR, TEXAS

UNICOM (CTAF)  
122.8  
AUSTIN DEP CON  
127.225 317.65

**TOP ALTITUDE:  
ASSIGNED BY ATC**

TAKEOFF MINIMUMS:  
Rwys 17, 35: Standard.

GARDS  
5000



224°  
(36)



NOTE: RADAR required.  
NOTE: DME/DME/IRU or GPS required.  
NOTE: RNAV-1.

NOTE: Chart not to scale.



## DEPARTURE ROUTE DESCRIPTION

TAKEOFF RUNWAY 17: Climb on heading 174° or as assigned by ATC for vectors to cross GARDS at or above 5000, thence....

TAKEOFF RUNWAY 35: Climb on heading 354° or as assigned by ATC for vectors to cross GARDS at or above 5000, thence....

... on track 224° to BNDIA. Maintain altitude assigned by ATC. Expect filed altitude 10 minutes after departure.

# BNDIA THREE DEPARTURE (RNAV)

(BNDIA3.BNDIA) 22APR21

TAYLOR, TEXAS

TAYLOR MUNI (T74)

SC-3, 22 FEB 2024 to 21 MAR 2024

SC-3, 22 FEB 2024 to 21 MAR 2024

(ELOEL3.ELOEL) 23054

# ELOEL THREE DEPARTURE (RNAV)

AL-6938 (FAA)

TAYLOR MUNI (T74)

TAYLOR, TEXAS

**TOP ALTITUDE:  
ASSIGNED BY ATC**

UNICOM (CTAF)  
122.8  
AUSTIN DEP CON  
127.225 317.65

ABILENE  
ABI

FL 180  
307°  
(120)

FORSS

KLNGR

10500  
\*2700  
338°  
(10)

10500  
\*2700  
329°  
(18)

TAKEOFF MINIMUMS:  
Rwys 17, 35: Standard.

NOTE: RADAR required.  
NOTE: DME/DME/IRU or GPS required.  
NOTE: RNAV 1.

ELOEL

338°  
(10)

WLMRT  
5000

NOTE: Chart not to scale.



## DEPARTURE ROUTE DESCRIPTION

TAKEOFF RUNWAY 17: Climb on heading 174° or as assigned by ATC for vectors to cross WLMRT at or above 5000, then...

TAKEOFF RUNWAY 35: Climb on heading 354° or as assigned by ATC for vectors to cross WLMRT at or above 5000, then....

... on track 338° to ELOEL, then on transition. Maintain altitude assigned by ATC. Expect filed altitude 10 minutes after departure.

ABILENE TRANSITION (ELOEL3.ABI)

FORSS TRANSITION (ELOEL3.FORSS)

KLNGR TRANSITION (ELOEL3.KLNGR)



# ELOEL THREE DEPARTURE (RNAV)

(ELOEL3.ELOEL) 22APR21

TAYLOR, TEXAS

TAYLOR MUNI (T74)

SC-3, 22 FEB 2024 to 21 MAR 2024

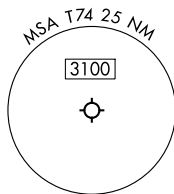
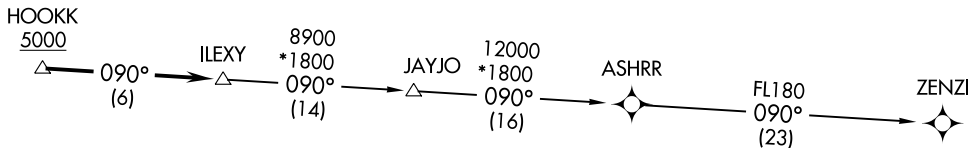
SC-3, 22 FEB 2024 to 21 MAR 2024

RNAV 1- DME/DME/IRU or GPS.  
RADAR required.

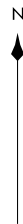
**TOP ALTITUDE:  
ASSIGNED BY ATC**

UNICOM (CTAF) 122.8  
AUSTIN DEP CON 127.225 317.65

TAKEOFF MINIMUMS:  
Rwys 17, 35: Standard.



NOTE: Houston terminal area arrivals expect routing from ILEXY.  
NOTE: JAYJO transition to join V306 only.  
NOTE: Aircraft not destined the Houston terminal area or joining V306 must file the ZENZI transition.



NOTE: Chart not to scale.

ILEXY FOUR DEPARTURE (RNAV)  
(ILEXY4.ILEXY) 15JUN23

(ILEXY4.ILEXY) 23166  
ILEXY FOUR DEPARTURE (RNAV)  
AL-6938 (FAA)

**DEPARTURE ROUTE DESCRIPTION**

TAKEOFF RUNWAY 17: Climb on heading 174° or as assigned by ATC for vectors to cross HOOKK at or above 5000, thence. . . .  
TAKEOFF RUNWAY 35: Climb on heading 354° or as assigned by ATC for vectors to cross HOOKK at or above 5000, thence. . . .

. . . . on track 090° to ILEXY, then on transition. Maintain altitude assigned by ATC. Expect filed altitude 10 minutes after departure.

JAYJO TRANSITION (ILEXY4.JAYJO)  
ZENZI TRANSITION (ILEXY4.ZENZI)

TAYLOR, TEXAS  
TAYLOR MUNI (T74)

TAYLOR MUNI (T74)  
TAYLOR, TEXAS

(MUCKY3.MUCKY) 21112

AL-6938 (FAA)

TAYLOR MUNI (T74)

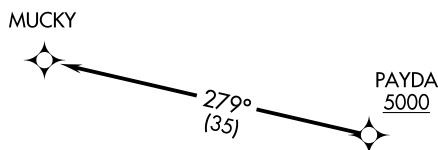
TAYLOR, TEXAS

# MUCKY THREE DEPARTURE (RNAV)

UNICOM (CTAF)  
122.8  
AUSTIN DEP CON  
127.225 317.65

**TOP ALTITUDE:  
ASSIGNED BY ATC**

TAKEOFF MINIMUMS:  
Rwys 17, 35: Standard.



NOTE: RADAR required.  
NOTE: DME/DME/IRU or GPS required.  
NOTE: RNAV 1.

NOTE: Chart not to scale.



## DEPARTURE ROUTE DESCRIPTION

TAKEOFF RUNWAY 17: Climb on heading 174° or as assigned by ATC for vectors to cross PAYDA at or above 5000, thence. . . .

TAKEOFF RUNWAY 35: Climb on heading 354° or as assigned by ATC for vectors to cross PAYDA at or above 5000, thence. . . .

. . . . on track 279° to MUCKY. Maintain altitude assigned by ATC.  
Expect filed altitude 10 minutes after departure.

MUCKY THREE DEPARTURE (RNAV)

(MUCKY3.MUCKY) 22APR21

TAYLOR, TEXAS

TAYLOR MUNI (T74)

SC-3, 22 FEB 2024 to 21 MAR 2024

SC-3, 22 FEB 2024 to 21 MAR 2024

(SAYBR3.SAYBR) 21112

# SAYBR THREE DEPARTURE (RNAV)

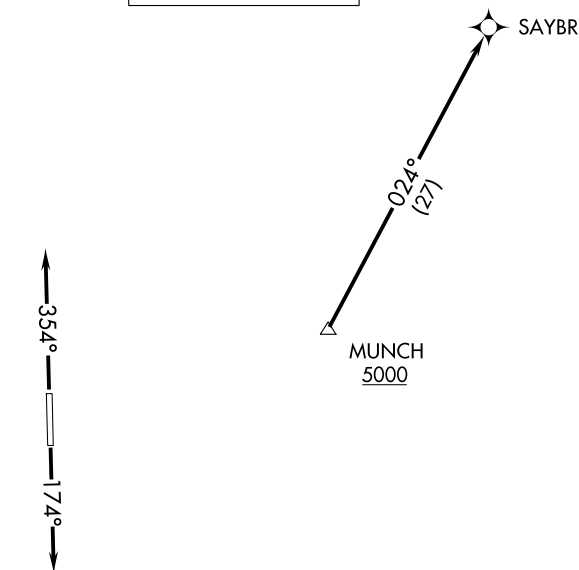
AL-6938 (FAA)

TAYLOR MUNI (T74)

TAYLOR, TEXAS

UNICOM (CTAF)  
122.8  
AUSTIN DEP CON  
127.225 317.65

**TOP ALTITUDE:  
ASSIGNED BY ATC**



- NOTE: RADAR required.
- NOTE: DME/DME/IRU or GPS required.
- NOTE: RNAV 1.
- NOTE: For DFW terminal area arrivals at FL230 or below only.

### TAKEOFF MINIMUMS

Rwys 17, 35: Standard.

NOTE: Chart not to scale.



### DEPARTURE ROUTE DESCRIPTION

TAKEOFF RUNWAY 17: Climb on heading 174° or as assigned by ATC for vectors to cross MUNCH at or above 5000, thence. . . .

TAKEOFF RUNWAY 35: Climb on heading 354° or as assigned by ATC for vectors to cross MUNCH at or above 5000, thence. . . .

. . . . on track 024° to SAYBR. Maintain altitude assigned by ATC.  
Expect filed altitude 10 minutes after departure.

# SAYBR THREE DEPARTURE (RNAV)

(SAYBR3.SAYBR) 22APR21

TAYLOR, TEXAS

TAYLOR MUNI (T74)

SC-3, 22 FEB 2024 to 21 MAR 2024

SC-3, 22 FEB 2024 to 21 MAR 2024