

LOC/DME I-OGZ 111.95 Chan 56(Y)	APP CRS 123°	Rwy ldg TDZE Apt Elev 9000 618 618
--	------------------------	--

ILS RWY 11 (CAT II & III)

ST LOUIS LAMBERT INTL (STL)

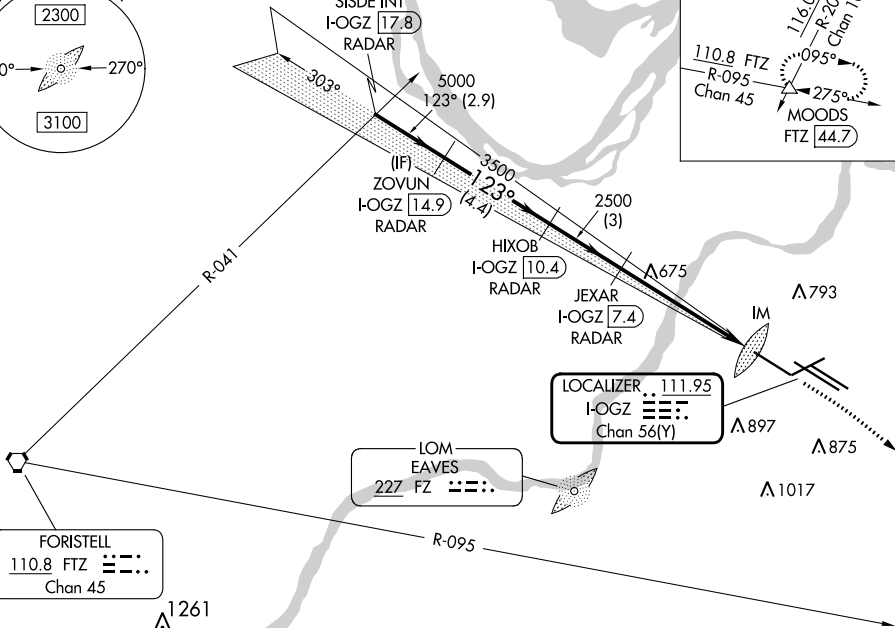
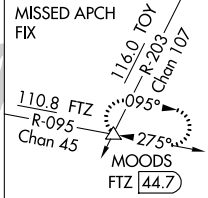
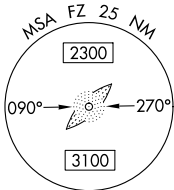
RADAR required for procedure entry. DME or RADAR required.



MISSED APPROACH: Climb to 1060 then climbing right turn to 3000 on heading 130° and FTZ R-095 to MOODS INT/FTZ 44.7 DME and hold.

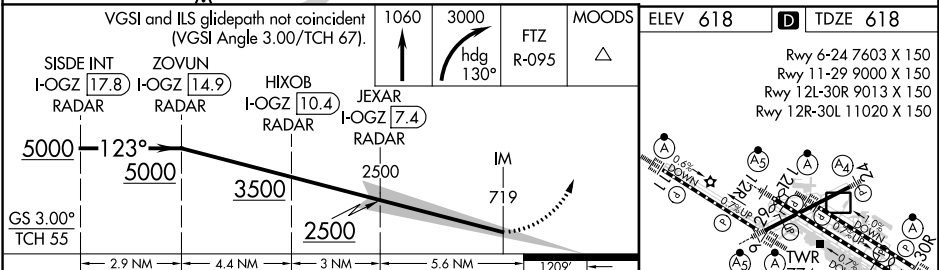
Simultaneous approach authorized with Rwy 12R/L. Disregard OM signal associated with ILS to Rwy 12R.

D-ATIS 125.025 379.925	ST. LOUIS APP CON 132.125 360.6	ST. LOUIS TOWER 132.475 239.275	GND CON 121.9 348.6 (Inbound) 121.65 377.175 (Outbound) 118.925 227.125 (Rwy 11/29)	CLNC DEL 119.5 363.1	CPDLC
--	---	---	---	--------------------------------	-------



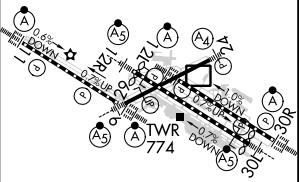
NC-3, 22 FEB 2024 to 21 MAR 2024

NC-3, 22 FEB 2024 to 21 MAR 2024



CATEGORY	A	B	C	D
S-ILS 11	CAT II RA 187/12 100 DA 718			
S-ILS 11	CAT III RVR 06			

VGSI and ILS glidepath not coincident (VGSI Angle 3.00/TCH 67).
 1060 3000 FTZ MOODS
 ELEV 618 TDZE 618
 Rwy 6-24 7603 X 150
 Rwy 11-29 9000 X 150
 Rwy 12L-30R 9013 X 150
 Rwy 12R-30L 11020 X 150



CATEGORY II & III ILS - SPECIAL AIRCREW & AIRCRAFT CERTIFICATION REQUIRED

HIRL all Rwys
 TDZ/CL Rwys 11, 12L, 12R, 29, and 30R