

ST. LOUIS, MISSOURI  
ST LOUIS LAMBERT INTL (STL)  
(TEDD5, TEDD) 18312

ST. LOUIS, MISSOURI  
ST LOUIS LAMBERT INTL (STL)  
(TEDD5, TEDD) 18312

**TOP ALTITUDE:  
5000**

**TAKEOFF MINIMUMS**

Rwys 6, 24: Standard with minimum climb of 500' per NM to 1120 then minimum climb of 280' per NM to 5000.

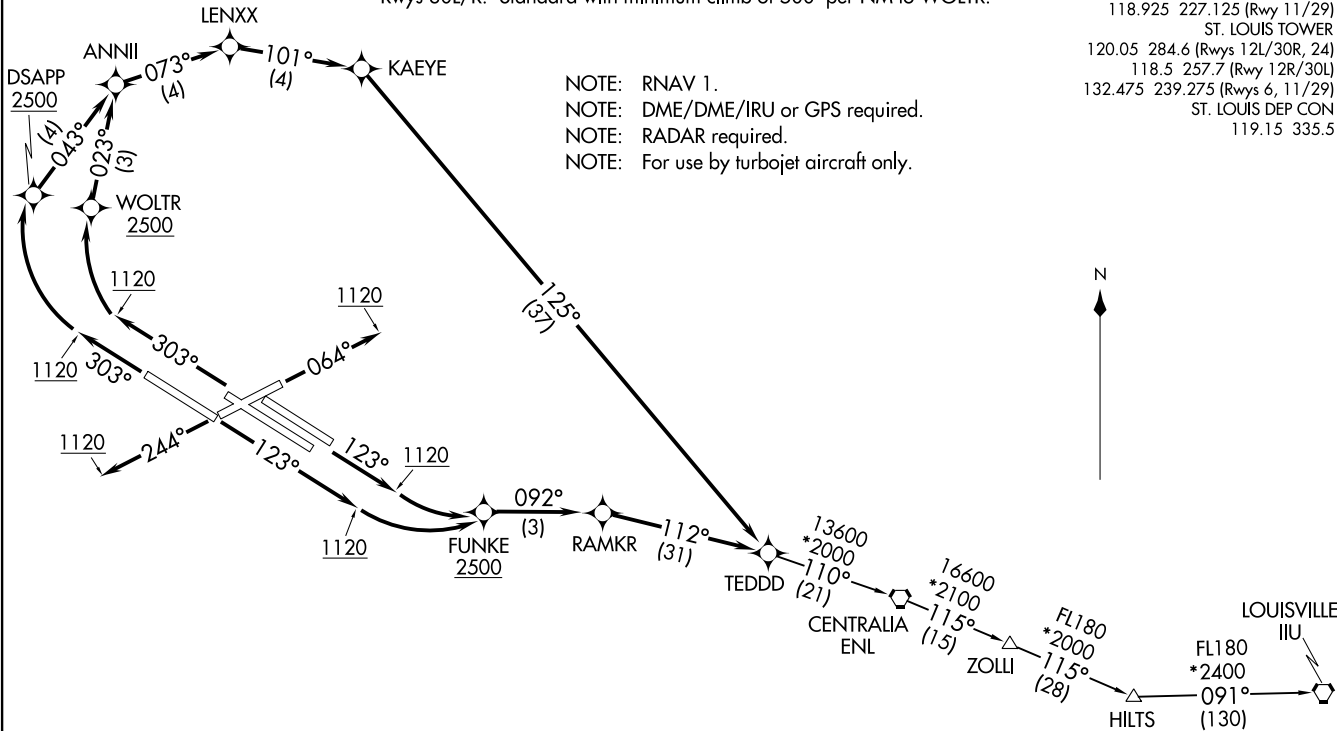
Rwys 11, 12L/R: Standard with minimum climb of 500' per NM to FUNKE.

Rwy 29: Standard with minimum climb of 500' per NM to DSAPP.

Rwys 30L/R: Standard with minimum climb of 500' per NM to WOLTR.

- NOTE: RNAV 1.
- NOTE: DME/DME/IRU or GPS required.
- NOTE: RADAR required.
- NOTE: For use by turbojet aircraft only.

D-ATIS	125.025	379.925
CLNC DEL	119.5	363.1
CPDLC		
GND CON	121.9	348.6 (Inbound)
	121.65	377.175 (Outbound)
	118.925	227.125 (Rwy 11/29)
ST. LOUIS TOWER	120.05	284.6 (Rwys 12L/30R, 24)
	118.5	257.7 (Rwy 12R/30L)
ST. LOUIS DEP CON	132.475	239.275 (Rwys 6, 11/29)
	119.15	335.5



NOTE: Chart not to scale.

(NARRATIVE ON FOLLOWING PAGE)

(TEDD5, TEDD) 18312

AL-360 (FAA)

ST LOUIS LAMBERT INTL (STL)  
ST. LOUIS, MISSOURI



DEPARTURE ROUTE DESCRIPTION

TAKEOFF RUNWAY 6: Climb heading 064° to 1120, then as assigned by ATC, expect RADAR vectors to TEDDD. Thence. . . .

TAKEOFF RUNWAY 24: Climb heading 244° to 1120, then as assigned by ATC, expect RADAR vectors to TEDDD. Thence. . . .

TAKEOFF RUNWAYS 11, 12L/R: Climb heading 123° to 1120, then left turn direct FUNKE, cross FUNKE at or above 2500, then on depicted route to TEDDD. Thence. . . .

TAKEOFF RUNWAY 29: Climb heading 303° to 1120, then right turn direct DSAPP, cross DSAPP at or above 2500, then on depicted route to TEDDD. Thence. . . .

TAKEOFF RUNWAYS 30L/R: Climb heading 303° to 1120, then right turn direct WOLTR, cross WOLTR at or above 2500, then on depicted route to TEDDD. Thence. . . .

. . . . (transition). Maintain 5000, expect filed altitude 10 minutes after departure.

HILTS TRANSITION (TEDDD5.HILTS)

LOUISVILLE TRANSITION (TEDDD5.IIU)

NC-3, 22 FEB 2024 to 21 MAR 2024

NC-3, 22 FEB 2024 to 21 MAR 2024