

# ILS or LOC Y RWY 4L

LOC I-SSC <b>110.1</b>	APCH CRS <b>043°</b>	Rwy Idg TDZE Arprt Elev	4L <b>10,014</b> <b>240</b> <b>241</b>	4R <b>8014</b> <b>236</b> <b>241</b>
---------------------------	-------------------------	-------------------------------	---	---

AL-409 [USAF]

SHAW AFB (KSSC)

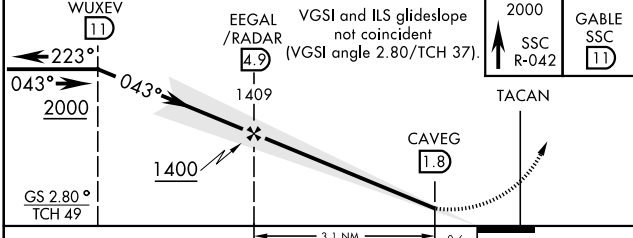
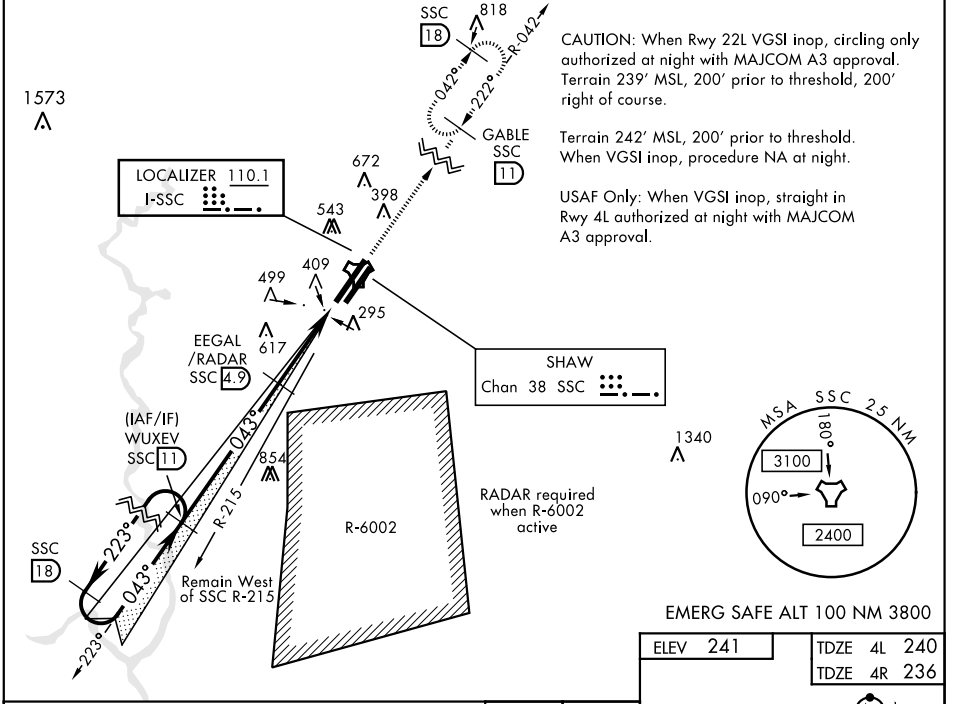
RADAR or DME Required.

**▼** \* When ALS inop, increase CAT AB RVR to 55 and vis to 1 mile, CAT CDE vis to 1½ miles.



MISSED APPROACH: Climbing to 2000, intercept SSC TACAN R-042 to GABLE and hold.

ATIS ★ <b>132.125 270.1</b>	SHAW APP CON <b>125.4 318.1</b>	SHAW TOWER ★ <b>126.65 254.25</b>	GND CON <b>126.1 275.8</b>	CLNC DEL <b>126.1 275.8</b>
--------------------------------	------------------------------------	--------------------------------------	-------------------------------	--------------------------------



ELEV 241	TDZE 4L 240	TDZE 4R 236
----------	-------------	-------------

HIRL all Rwy

FAF to MAP 3.1 NM

Knots	60	90	120	150	180
Min:Sec	3:06	2:04	1:33	1:14	1:02

CATEGORY	A	B	C	D	E
S-ILS 4L	490/50		250	(300-1)	
S-LOC 4L *	780/50	540 (600-1)	780/55	540 (600-1)	
SIDESTEP 4R *	780/50	544 (600-¾)	780-1⅓	544 (600-1⅓)	
<b>C</b> CIRCLING	820-1 579 (600-1)	880-1 639 (700-1)	1000-2¼ 759 (800-2¼)	1000-2½ 759 (800-2½)	1000-2¾ 759 (800-2¾)

# ILS or LOC Y RWY 4L

SE-2, 22 FEB 2024 to 21 MAR 2024

SE-2, 22 FEB 2024 to 21 MAR 2024