

VOR/DME SRQ 117.0 Chan 117	APP CRS 118°	Rwy Idg 7540 TDZE 23 Apt Elev 30
--	------------------------	---

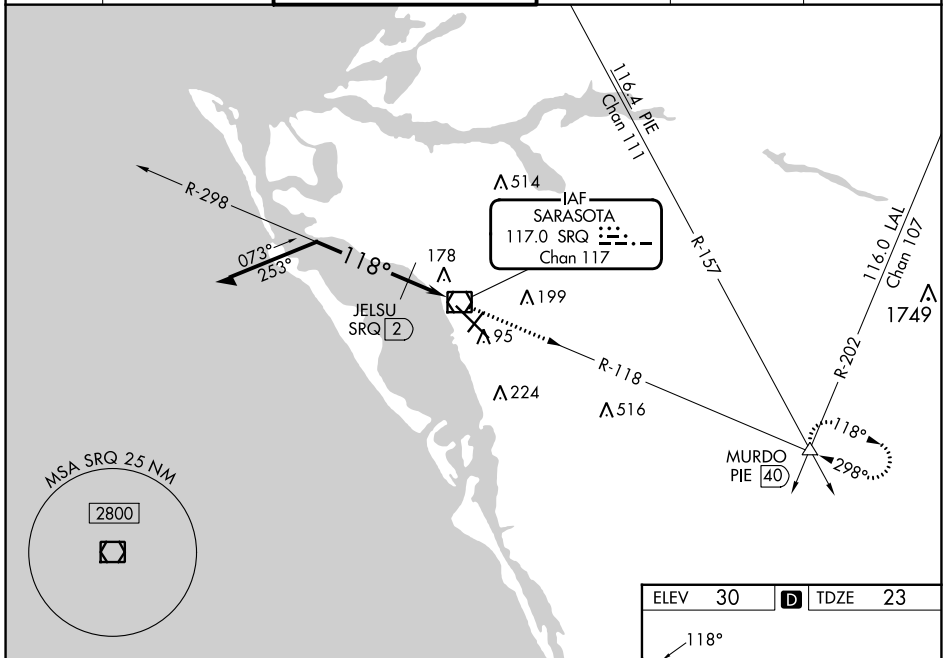
VOR RWY 14
SARASOTA/BRADENTON INTL (SRQ)

▼ For inop MALSRR, increase S-14 Cats C/D visibility to 1 1/2 mile, increase JELSU Fix Minimums S-14 Cats C/D visibility to 1 1/2 mile. When control tower closed, increase S-14 Cats A/B and JELSU Fix Minimums S-14 all Cats visibility to 1 mile. When control tower closed, inop table does not apply to S-14 and JELSU Fix Minimums S-14 Cats A/B. When control tower closed, for inop MALSRR, increase S-14 Cats C/D visibility to 1 1/2 mile, increase JELSU Fix Minimums Cats C/D visibility to 1 1/2 mile.

MALSRR

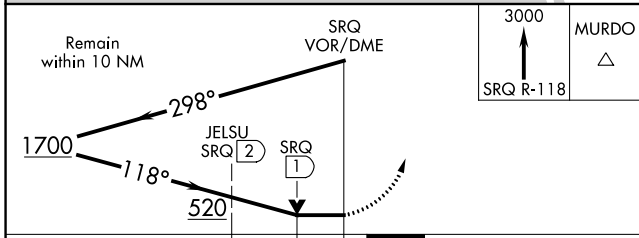
MISSED APPROACH:
Climb to 3000 on SRQ
VOR/DME R-118 to
MURDO INT/PIE 40
DME and hold.

ATIS 124.375	TAMPA APP CON 119.65 353.575	SARASOTA TOWER* 120.1 (CTAF) 0 256.8	GND CON 121.9 273.6	CLNC DEL 118.25	UNICOM 122.95
------------------------	--	--	-------------------------------	---------------------------	-------------------------

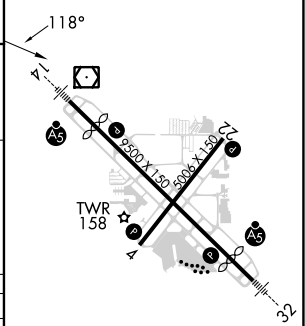


SE-3, 22 FEB 2024 to 21 MAR 2024

SE-3, 22 FEB 2024 to 21 MAR 2024



ELEV 30	D	TDZE 23
---------	---	---------



CATEGORY	A	B	C	D
S-14	520-1/2	497 (500-1/2)	520-1	497 (500-1)
CIRCLING	520-1	490 (500-1)	600-1 1/2 570 (600-1 1/2)	600-2 570 (600-2)
JELSU FIX MINIMUMS				
S-14	440-1/2	417 (500-1/2)	440-3/4	417 (500-3/4)
CIRCLING	500-1	470 (500-1)	600-1 1/2 570 (600-1 1/2)	600-2 570 (600-2)

REIL Rwy 22
HIRL Rwys 14-32 and 4-22