

WAAS CH 56632	APP CRS 115°	Rwy Idg TDZE	6500 24
W11A		Apt Elev	27

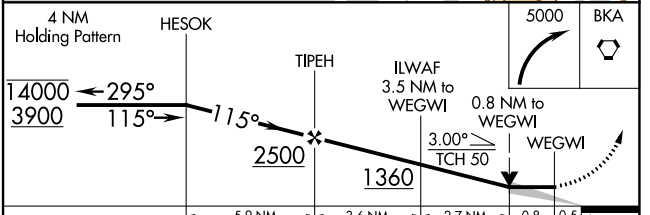
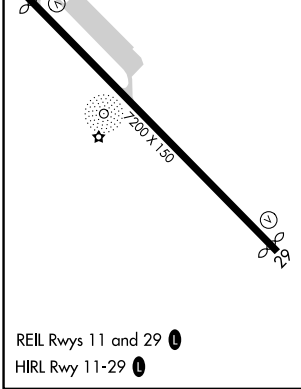
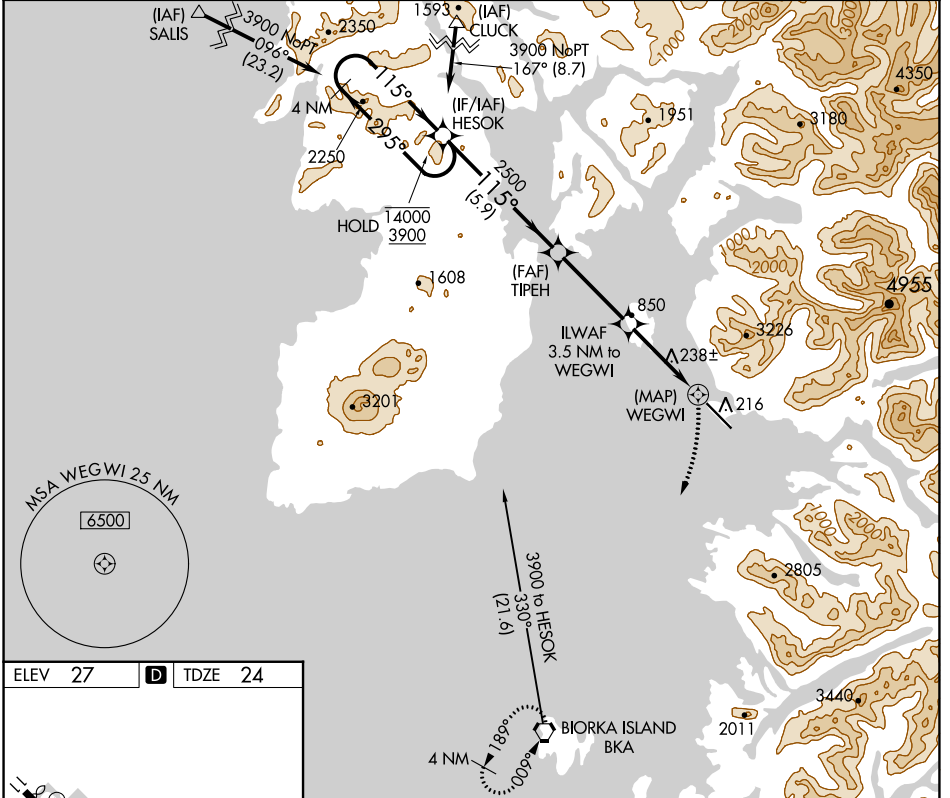
RNAV (GPS) RWY 11

SITKA ROCKY GUTIERREZ (SIT)(PASI)

RNP APCH.
 ▼ When local altimeter setting not received, procedure NA.
 ▲ Circling NA northeast of Rwy 11-29.

MISSED APPROACH: Climbing right turn to 5000 direct BKA VORTAC and hold, continue climb-in-hold to 5000.

AFIS 135.9	ANCHORAGE CENTER 126.1 335.5	SITKA RADIO 123.6 (CTAF) 122.2	UNICOM 122.95
----------------------	--	--	-------------------------



CATEGORY	A	B	C	D
LP MDA	500-1	476 (500-1)	500-1 $\frac{3}{8}$	476 (500-1 $\frac{1}{2}$)
LNAV MDA	1300-1 $\frac{1}{4}$ 1276 (1300-1 $\frac{1}{4}$)	1300-1 $\frac{1}{2}$ 1276 (1300-1 $\frac{1}{2}$)	1300-3	1276 (1300-3)
CIRCLING	1300-1 $\frac{1}{4}$ 1273 (1300-1 $\frac{1}{4}$)	1300-1 $\frac{1}{2}$ 1273 (1300-1 $\frac{1}{2}$)	1300-3 1273 (1300-3)	1660-3 1633 (1700-3)

AK, 25 JAN 2024 to 21 MAR 2024

AK, 25 JAN 2024 to 21 MAR 2024