

SEATTLE, WASHINGTON

AL-582 (FAA)

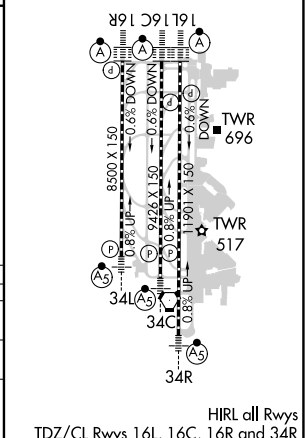
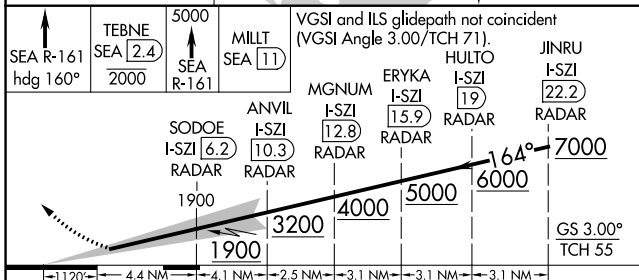
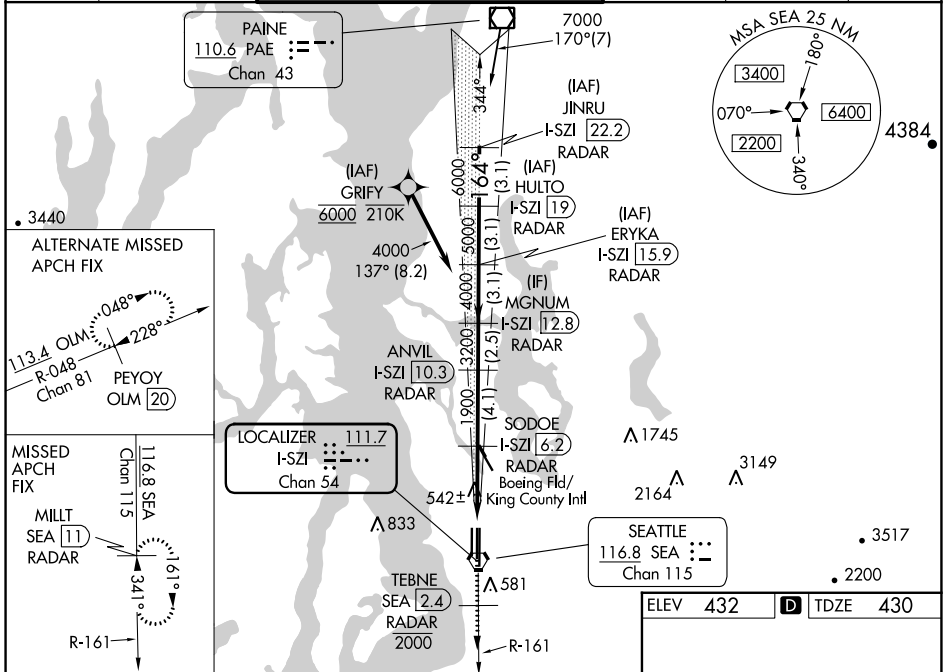
23334

LOC/DME I-SZI 111.7 Chan 54	APP CRS 164°	Rwy Idg TDZE 430 Apt Elev 432	9426
---	------------------------	---	-------------

ILS RWY 16C (CAT II & III)

SEATTLE-TACOMA INTL (SEA)

DME or RADAR required. From GRIFY:RNAV 1-GPS required.		ALSF-2 		MISSED APPROACH: Climb on heading 160° and SEA VORTAC R-161 to cross TEBNE/SEA 2.4 DME/RADAR at or below 2000, then climb to 5000 on SEA VORTAC R-161 to MILIT/SEA 11 DME/RADAR and hold, continue climb-in-hold to 5000.		
Simultaneous approach authorized with Rwy 16R. Simultaneous operations require use of vertical guidance, maintain last assigned altitude until established on glideslope. Cat II: RVR 1000 authorized with specific OPSPEC, MSPEC, or LOA approval and use of Autoland or HUD to touchdown.		SEATTLE TOWER 119.9 239.3 (Rwys 16L, 16C, 34C, 34R) 120.95 239.3 (Rwys 16R, 34L)		GND CON 121.7	CLNC DEL 128.0	CPDLC



CATEGORY	A	B	C	D
S-ILS 16C	CAT II RA 126/12 100 DA 530			
S-ILS 16C	CAT III RVR 03			

CATEGORY II & III ILS - SPECIAL AIRCREW & AIRCRAFT CERTIFICATION REQUIRED

SEATTLE, WASHINGTON
Amdt 17 28FEB19

47°27'N-122°19'W

SEATTLE-TACOMA INTL (SEA) ILS RWY 16C (CAT II & III)

NW-1, 22 FEB 2024 to 21 MAR 2024

NW-1, 22 FEB 2024 to 21 MAR 2024