

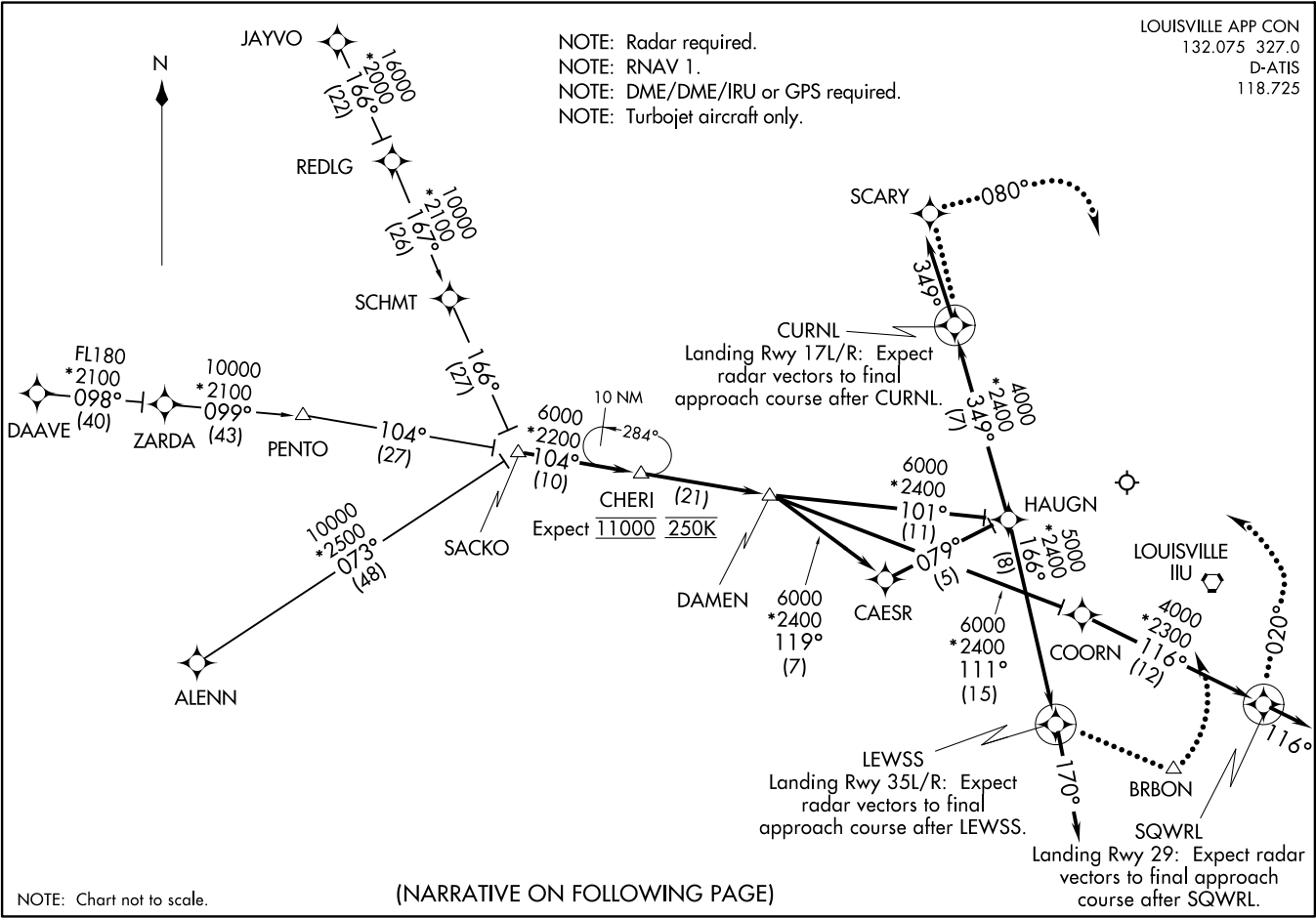
LOUISVILLE APP CON
132.075 327.0
D-ATIS
118.725

NOTE: Radar required.
NOTE: RNAV 1.
NOTE: DME/DME/IRU or GPS required.
NOTE: Turbojet aircraft only.

(SACKO DAMEN5) 1922Z
DAMEN FIVE ARRIVAL (RNAV)

AT-239 (FAA)

LOUISVILLE MUHAMMAD ALI INTL (SDF)
LOUISVILLE, KENTUCKY



NOTE: Chart not to scale.

(NARRATIVE ON FOLLOWING PAGE)

DAMEN FIVE ARRIVAL (RNAV)
(SACKO DAMEN5) 15AUG19

LOUISVILLE, KENTUCKY
LOUISVILLE MUHAMMAD ALI INTL (SDF)

DAMEN FIVE ARRIVAL (RNAV)

ARRIVAL ROUTE DESCRIPTION

ALENN TRANSITION (ALENN.DAMEN5):

DAAVE TRANSITION (DAAVE.DAMEN5):

JAYVO TRANSITION (JAYVO.DAMEN5):

From SACKO on track 104° to CHERI, then on track 104° to DAMEN, then on assigned runway transition.

LANDING RWY 17L/R: From DAMEN on track 119° to CAESR, then on track 079° to HAUGN, then on track 349° to CURNL, then on track 349°. Expect radar vectors to final approach course.

LANDING RWY 29: From DAMEN on track 111° to COORN, then on track 116° to SQWRL, then on track 116°. Expect radar vectors to final approach course.

LANDING RWY 35L/R: From DAMEN on track 101° to HAUGN, then on track 166° to LEWSS, then on track 170°. Expect radar vectors to final approach course.

LOST COMMUNICATIONS:

Landing Rwy 17L/R: Track to CURNL, cross CURNL at 4000, then proceed direct SCARY, at SCARY fly heading 080°, maintain 4000: intercept and execute ILS or LOC Rwy 17R approach, if unable proceed to IIIU VORTAC and hold, maintain 6000.

Landing Rwy 29: Track to SQWRL, cross SQWRL at 3000, at SQWRL fly heading 020°, maintain 3000. Intercept and execute LOC Rwy 29 approach. If unable, proceed to IIIU VORTAC and hold, maintain 6000.

Landing Rwy 35L/R: Track to LEWSS, cross LEWSS at 5000, then proceed direct BRBON, maintain 5000, execute ILS or LOC Rwy 35L approach. If unable, proceed to IIIU VORTAC and hold, maintain 6000.

SE-1, 22 FEB 2024 to 21 MAR 2024

SE-1, 22 FEB 2024 to 21 MAR 2024