

APP CRS <b>328°</b>	Rwy Idg TDZE Apt Elev	<b>N/A</b> <b>N/A</b> <b>22</b>
------------------------	-----------------------------	---------------------------------------

# RNAV (GPS)-A

## HARVEY FLD (S43)

**NA** DME/DME RNP-0.3 NA. Procedure NA at night. Use Arlington altimeter setting. When not received, use Everett altimeter setting and increase all MDA 60 feet. Helicopter visibility reduction below 1 SM NA.

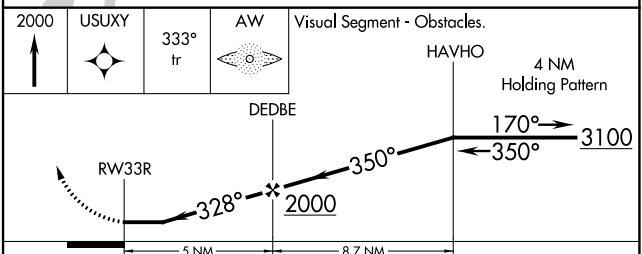
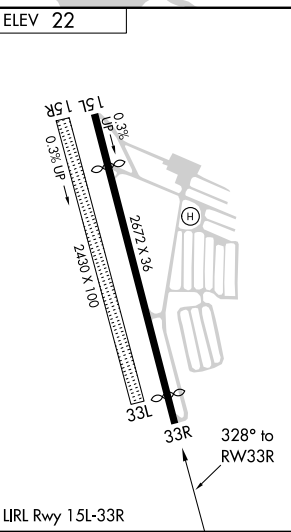
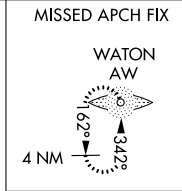
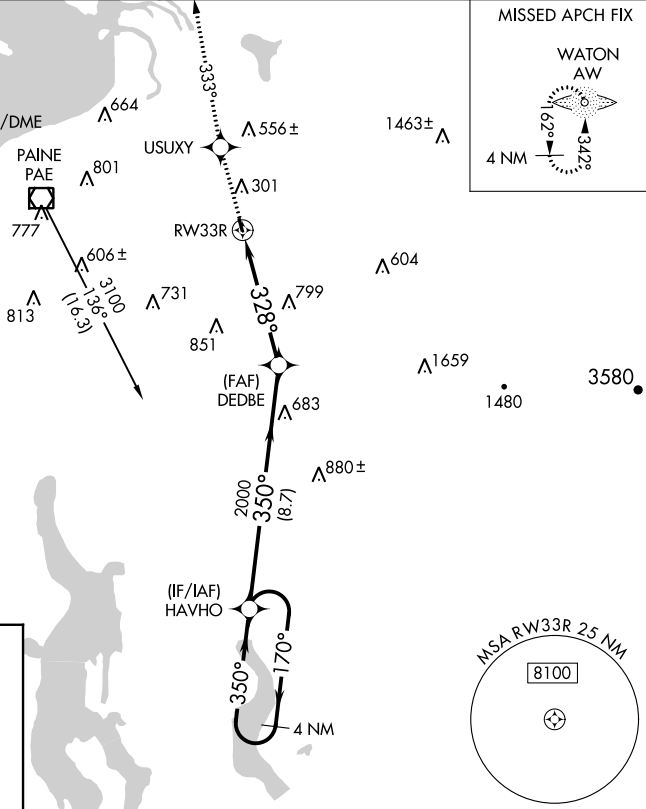
**MISSED APPROACH:** Climb to 2000 direct USUXY and via 333° track to WATON LOM and hold.

AWO AWOS-3PT  
**135.625**

SEATTLE APP CON  
**128.5 306.9**

UNICOM  
**123.0** (CTAF)

Procedure NA for arrivals at PAE VOR/DME via V23 northbound.



CATEGORY	A	B	C	D
CIRCLING	1220-1¼ 1198 (1200-1¼)	1220-1½ 1198 (1200-1½)	NA	

NW-1, 22 FEB 2024 to 21 MAR 2024

NW-1, 22 FEB 2024 to 21 MAR 2024