

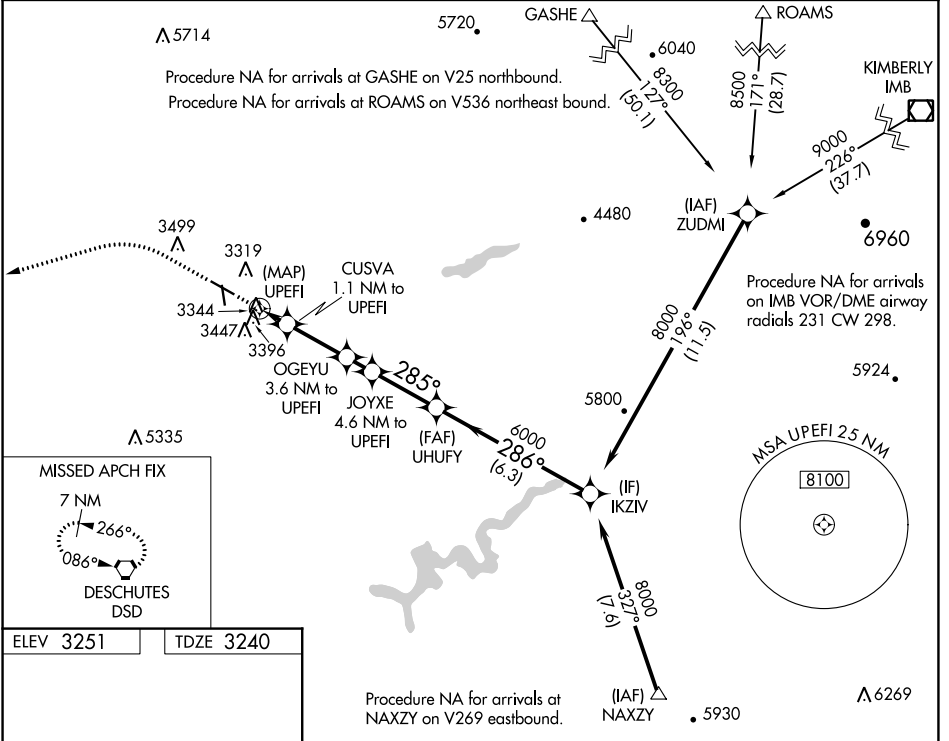
WAAS CH 56235 W29A	APP CRS 285°	Rwy Idg TDZE Apt Elev	5405 3240 3251
--	------------------------	-----------------------------	---

RNAV (GPS) RWY 29

PRINEVILLE (S39)

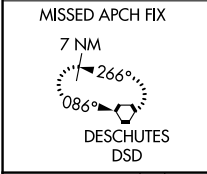
RNP APCH-GPS.	MISSED APPROACH: Climb to 4700 then climbing left turn to 7100 direct DSD VORTAC and hold.
<p>▽ Circling NA for Cat D south of Rwy 11-29.</p> <p>▲ Circling Rwy 15 NA at night.</p>	

AWOS-3PT 118.325	SEATTLE CENTER 126.15 269.475	UNICOM 122.7 (CTAF) 0
----------------------------	---	---------------------------------

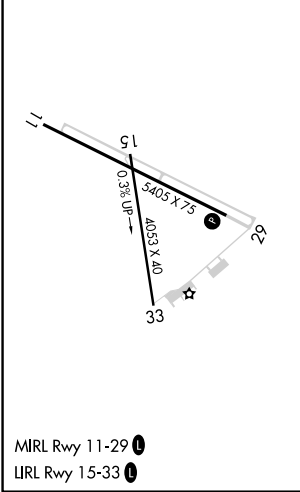


NW-1, 22 FEB 2024 to 21 MAR 2024

NW-1, 22 FEB 2024 to 21 MAR 2024



ELEV 3251	TDZE 3240
-----------	-----------



4700	7100	DSD			
			JOYXE 4.6 NM to UPEFI	UHFUY	IKZIV
			OGEYU 3.6 NM to UPEFI		
			CUSVA 1.1 NM to UPEFI		
			UPEFI		
			3980	4780	5140
			1.1 NM	1.1 NM	2.5 NM
			1 NM	2.6 NM	6.3 NM
			3660-1¼	420 (500-1¼)	
			3660-1¼	420 (500-1¼)	
			3960-1¼	4040-1¼	4040-2¼
			709 (800-1¼)	789 (800-1¼)	789 (800-2¼)
			4040-1¼	4040-2¼	4040-2½
			789 (800-1¼)	789 (800-2¼)	789 (800-2½)