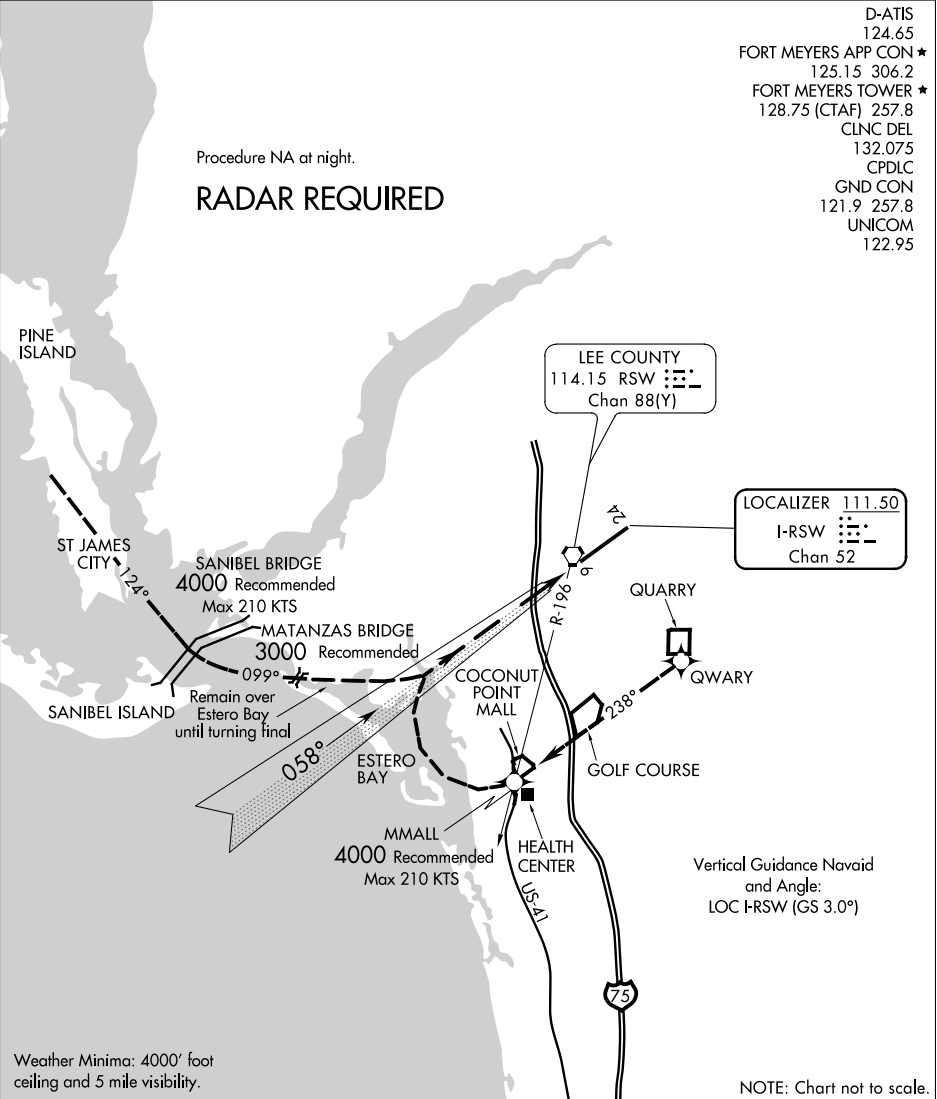


BAY VISUAL RWY 6



SE-3, 22 FEB 2024 to 21 MAR 2024

SE-3, 22 FEB 2024 to 21 MAR 2024

1	2	3	4	5	6	7	8	9	10	11	12	13	14	15	16
---	---	---	---	---	---	---	---	---	----	----	----	----	----	----	----

BAY VISUAL APPROACH RUNWAY 6

From EAST proceed direct to the quarry (over the Rock Quarry Midfield right downwind runway six) then direct and abeam the Coconut Point Mall. Turn base over Estero Bay and remain over the bay until turning final.

From WEST proceed direct to Pine Island then direct to the Sanibel Bridge (heading 124°) then direct to the Matanzas Pass Bridge (heading 099°). Remain over the middle of Estero Bay until turning final.