

# ILS or LOC Y RWY 13

LOC I-ELR <b>111.5</b>	APCH CRS <b>130°</b>	Rwy Idg <b>13,497</b> TDZE <b>3276</b> Arprt Elev <b>3276</b>	AL-343 [USAF]	ELLSWORTH AFB (KRCA)
---------------------------	-------------------------	---	---------------	----------------------

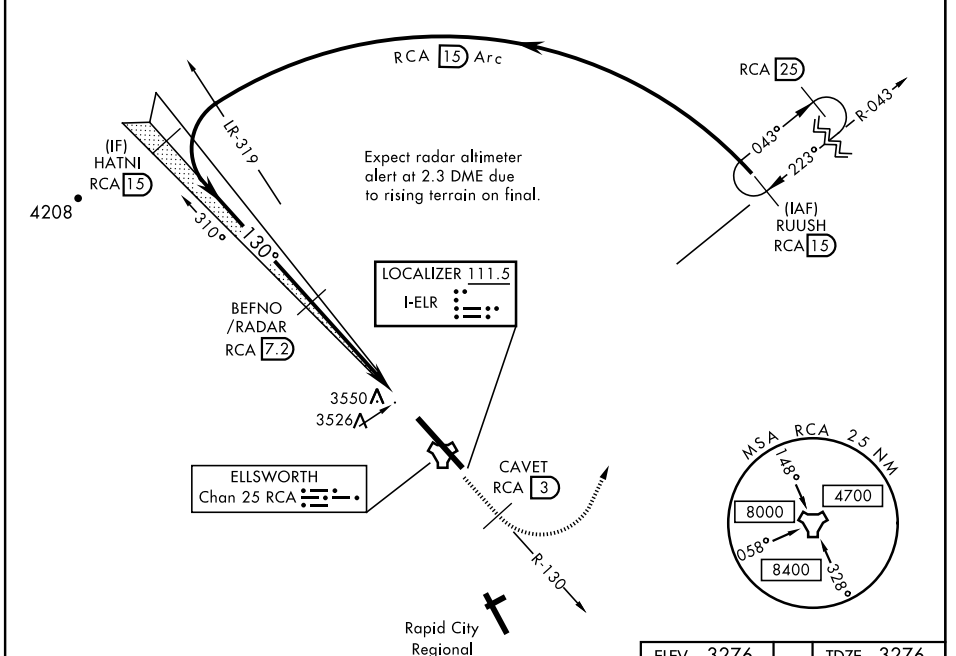
**▼** \*When ALS inop, increase RVR to 40 and vis to 3/4 mile.  
**\*\***When ALS inop, increase CAT AB RVR to 55 and vis to 1 mile, CAT CDE vis to 1 1/8 miles.



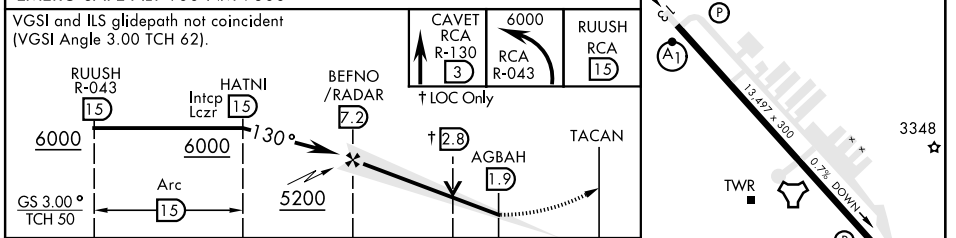
**MISSED APPROACH:** Track outbound RCA R-130 to 3 DME (CAVET), then turn left to join RCA R-043 to 15 DME (RUUSH) and hold. Maintain 6000.

ATIS * <b>120.625 269.9</b>	ELLSWORTH APP CON <b>119.5 259.1</b>	ELLSWORTH TOWER * <b>126.05 253.5</b>	GND CON <b>121.8 275.8</b>
--------------------------------	---	--	-------------------------------

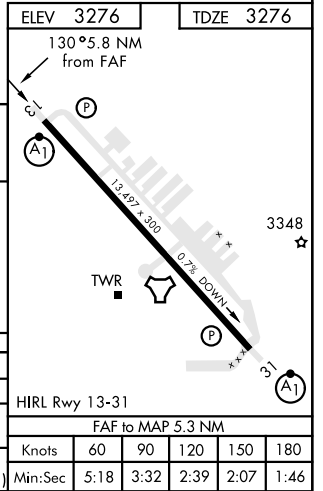
**\*\*\*** CAT E circling restricted to 28th BW aircraft only;  
 28th BW aircraft will remain within Class D airspace.



**RADAR or DME REQUIRED**  
 EMERG SAFE ALT 100 NM 9800



CATEGORY	A	B	C	D	E
	3476/24		200	(200-1/2)	
S-ILS 13 *	3476/24		200	(200-1/2)	
S-LOC 13 **	3780/24 504 (600-1/2)		3780/55 504 (600-1)		
CIRCLING ***	3860-1 584 (600-1)	3880-1 604 (700-1)	3880-1 3/4 604 (700-1 3/4)	3980-2 1/4 704 (800-2 1/4)	4040-2 3/4 764 (800-2 3/4)



# ILS or LOC Y RWY 13

NC-1, 22 FEB 2024 to 21 MAR 2024

NC-1, 22 FEB 2024 to 21 MAR 2024