

CENTRE, ALABAMA

AL-10343 (FAA)

22195

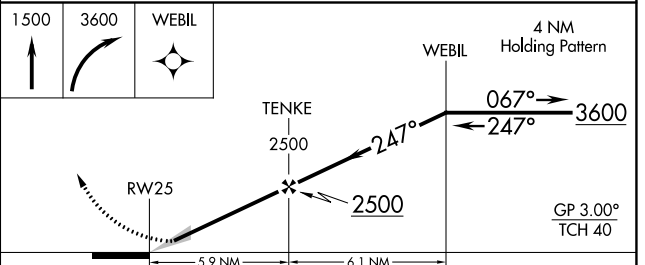
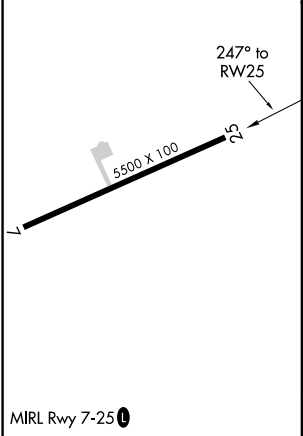
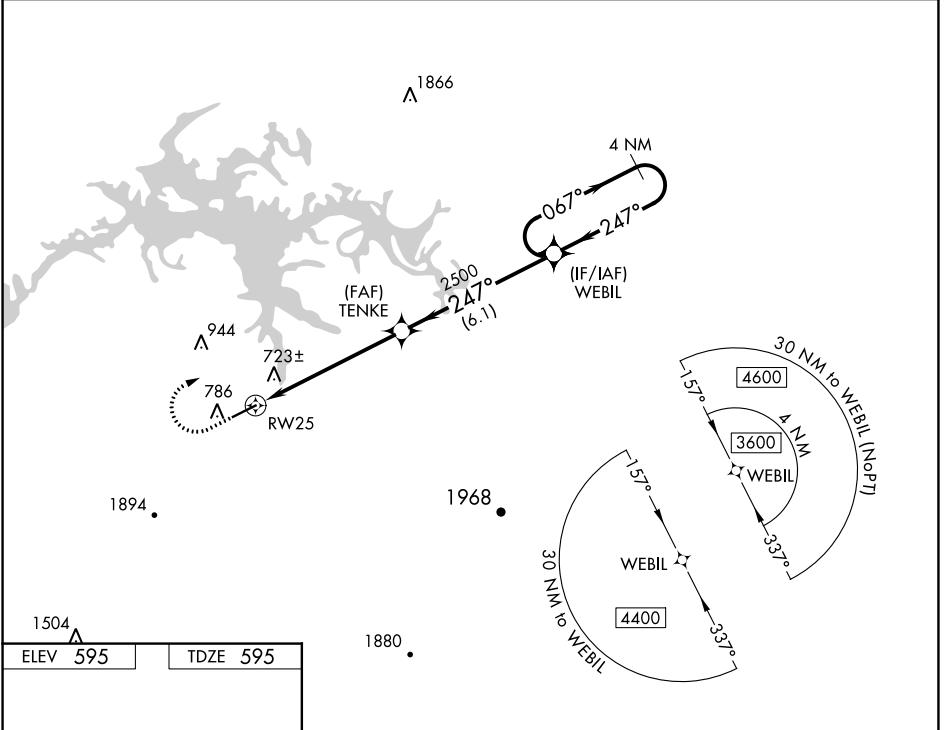
WAAS CH 72727 W25A	APP CRS 247°	Rwy Idg 5500 TDZE 595 Apt Elev 595
--	------------------------	---

RNAV (GPS) RWY 25

CENTRE-PIEDMONT CHEROKEE COUNTY RGNL (PYP)

<p>▼ Baro-VNAV NA. DME/DME RNP-0.3 NA. Use Gadsden altimeter setting, when not received, use Anniston altimeter setting and increase all DA/MDA 20 feet.</p> <p>▲ NA</p>	<p>MISSED APPROACH: Climb to 1500 then climbing right turn to 3600 direct WEBIL and hold.</p>
--	--

GAD AWOS-3PT 127.825	ATLANTA CENTER 124.5 270.325	CTAF 122.90
--------------------------------	--	-----------------------



CATEGORY	A	B	C	D
LPV DA	856-7/8		261 (300-7/8)	
LNAV/VNAV DA	1064-1 5/8		469 (500-1 5/8)	
LNAV MDA	1180-1 585 (600-1)		1180-1 3/4 585 (600-1 3/4)	
CIRCLING	1180-1 585 (600-1)		1360-2 1/4 765 (800-2 1/4)	2260-3 1665 (1700-3)

CENTRE, ALABAMA
Amdt 1B 14JUL22

CENTRE-PIEDMONT CHEROKEE COUNTY RGNL (PYP)
34°05'N-85°37'W

RNAV (GPS) RWY 25

SE-4, 22 FEB 2024 to 21 MAR 2024

SE-4, 22 FEB 2024 to 21 MAR 2024