

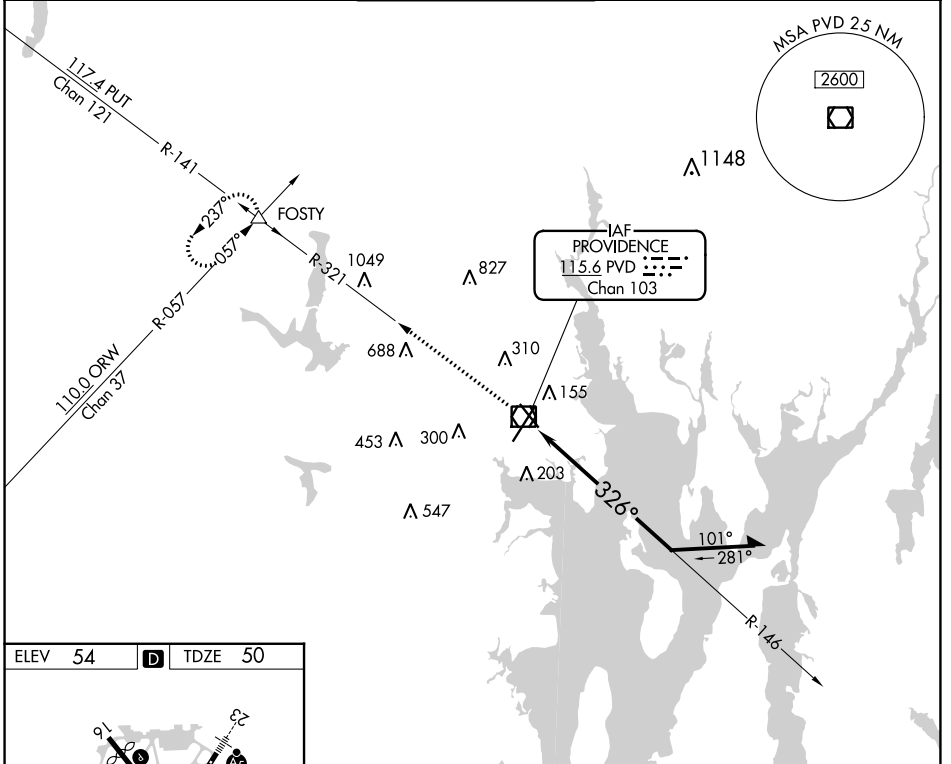
VOR/DME PVD <b>115.6</b> Chan <b>103</b>	APP CRS <b>326°</b>	Rwy Idg TDZE Apt Elev <b>6081</b> <b>50</b> <b>54</b>
--	------------------------	--

# VOR Y RWY 34

RHODE ISLAND TF GREEN INTL (PVD)

<p>Rwy 34 helicopter visibility reduction below RVR 4000 NA. For inop ALS, increase S-34 Cat A/B visibility to RVR 5500.</p>	<p>MALS R</p>	<p>MISSED APPROACH: Climb to 2500 on PVD VOR/DME R-321 to FOSTY INT and hold.</p>
--	---------------	---

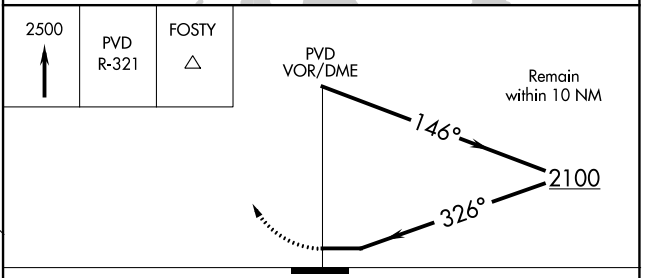
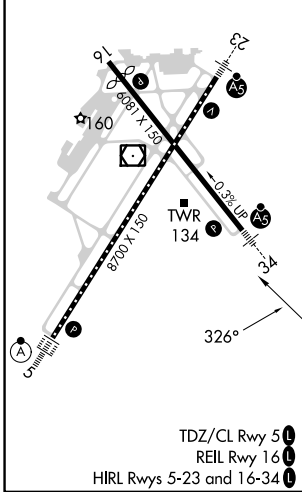
D-ATIS <b>124.2</b>	PROVIDENCE APP CON * <b>123.675 244.875</b>	PROVIDENCE TOWER * <b>120.7 (CTAF) 257.8</b>	GND CON <b>121.9 348.6</b>	CLNC DEL <b>126.65 348.6</b>
------------------------	--	---	-------------------------------	---------------------------------



NE-1, 22 FEB 2024 to 21 MAR 2024

NE-1, 22 FEB 2024 to 21 MAR 2024

ELEV 54	<b>D</b>	TDZE 50
---------	----------	---------



CATEGORY	A	B	C	D
S-34	700/40	650 (700-¾)	700-1⅓	650 (700-1⅓)
CIRCLING	700-1	646 (700-1)	700-1⅞ 646 (700-1⅞)	860-2½ 806 (900-2½)