

NDB/DME PNI 366	APP CRS 252°	Rwy Idg TDZE Apt Elev	N/A N/A 9
Chan 47 (111.0)			

NDB-A

POHNPEI INTL (PNI)(PTPN)

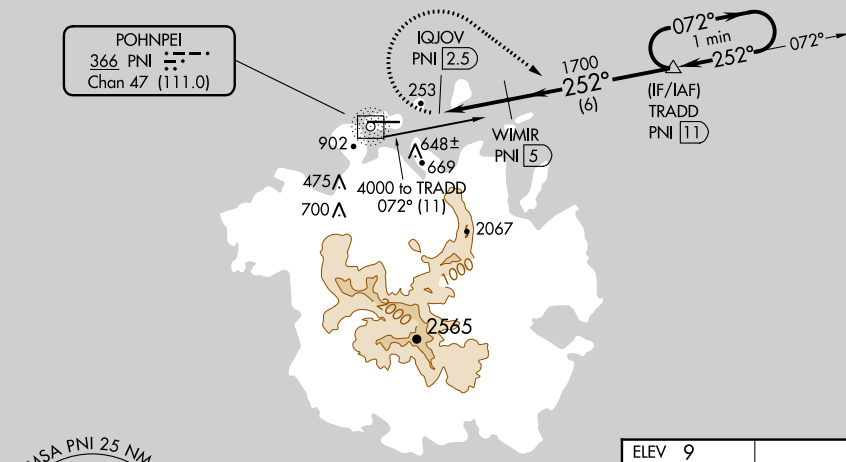
▼ Obtain local altimeter setting on CTAF; when not received, procedure NA.
▲ Circling NA south of Rwy 9-27. Procedure NA at night except by prior arrangement for runway lights. DME required. No controlled airspace below 5500 feet. Ships with maximum height of 150 feet MSL may traverse Pohnpei Channel 400 feet off approach end of runway 9, closing airport at times.

MISSED APPROACH: Climbing right turn to 3000 on heading 120° and on PNI NDB bearing 072° to TRADD/PNI 11 DME and hold.

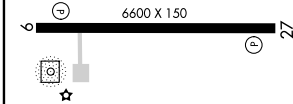
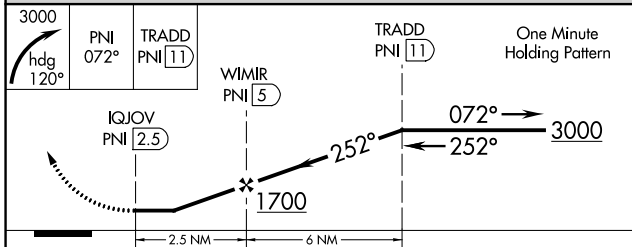
POHNPEI RADIO

123.6 (CTAF) 0

DME REQUIRED



ELEV 9



CATEGORY	A	B	C	D
C CIRCLING	960-1¾	951 (1000-1¾)	960-3	951 (1000-3)

MIRL Rwy 9-27 0
REIL Rwys 9 and 27

APP CRS	Rwy Idg	6600
258°	TDZE	9
	Apt Elev	9

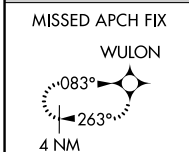
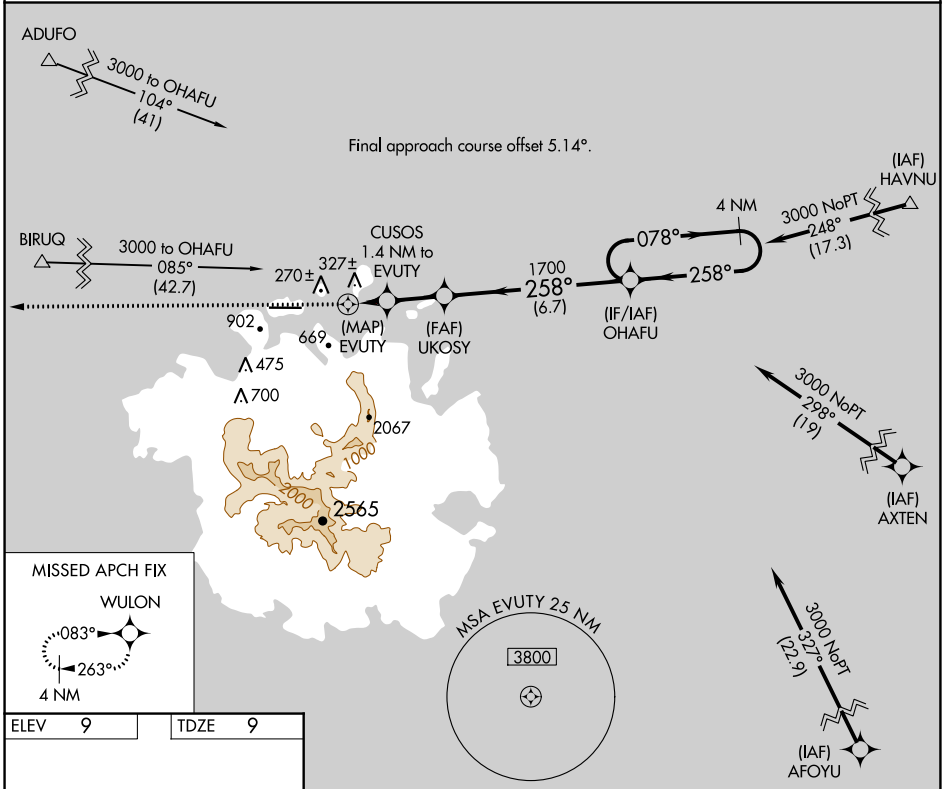
RNAV (GPS) RWY 27

POHNPEI INTL (PNI)(PTPN)

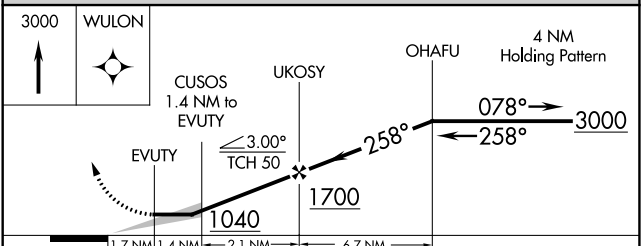
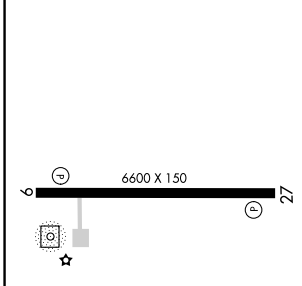
⚠ Obtain local altimeter setting on CTAF; when not received, procedure NA. Circling NA south of Rwy 9-27. Procedure NA at night except by prior arrangement for runway lights. DME/DME RNP-0.3 NA. No controlled airspace below 5500. Ships with maximum height of 150 feet MSL may traverse Pohnpei Channel 400 feet off approach end of runway 9, closing airport at times.

MISSED APPROACH:
Climb to 3000 direct WULON and hold.

POHNPEI RADIO
123.6 (CTAF) 0



ELEV	9	TDZE	9
------	---	------	---



CATEGORY	A	B	C	D
LNAV MDA	720-2 711 (800-2)			
C CIRCLING	720-2	711 (800-2)	720-2¼ 711 (800-2¼)	

PAC, 25 JAN 2024 to 21 MAR 2024

PAC, 25 JAN 2024 to 21 MAR 2024

APP CRS	Rwy Idg	6600
083°	TDZE	9
	Apt Elev	9

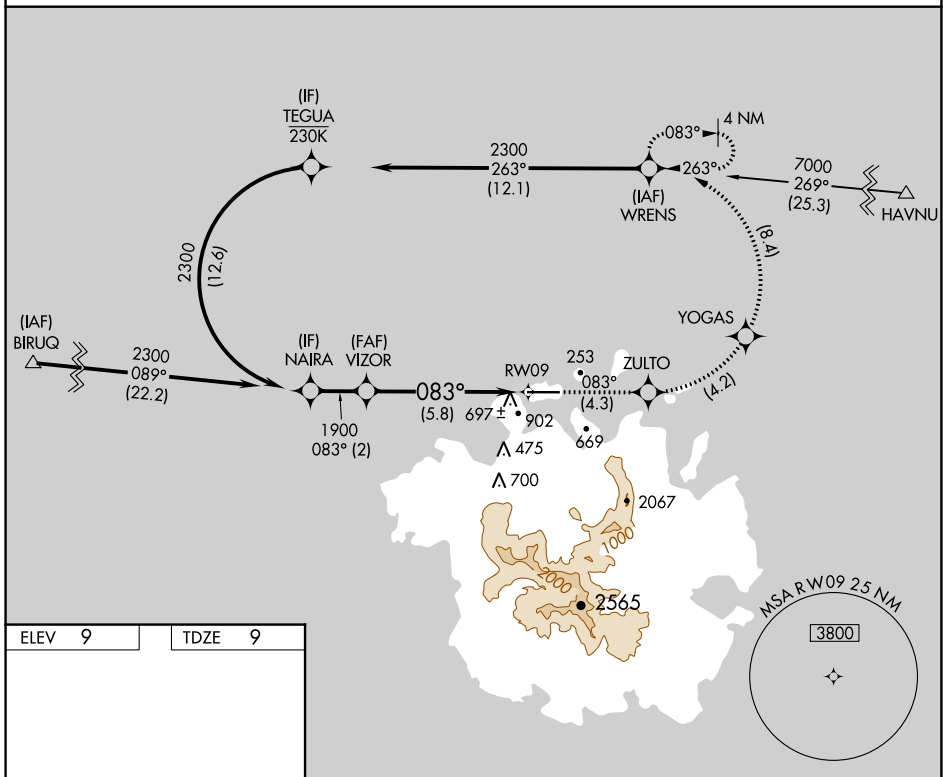
RNAV (RNP) Y RWY 9

POHNPEI INTL (PNI)(PTPN)

⚠ Obtain local altimeter setting on CTAF; when not received, procedure NA.
⚠ For uncompensated Baro-VNAV systems, procedure NA below 20°C (68°F) or above 54°C (130°F). Missed approach requires RNP less than 1.0. RF required. GPS required. No controlled airspace below 5500 feet.

MISSED APPROACH: (Do not exceed 230K until WRENS) Climb to 2300 on the RNAV missed approach route to WRENS and hold.

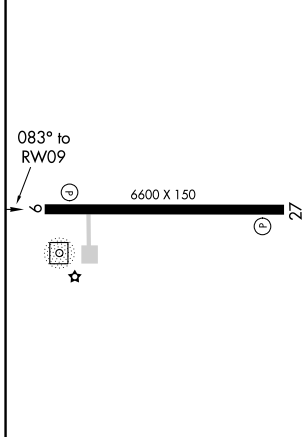
POHNPEI RADIO
123.6 (CTAF)



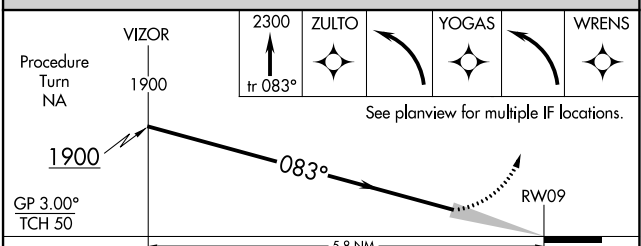
PAC, 25 JAN 2024 to 21 MAR 2024

PAC, 25 JAN 2024 to 21 MAR 2024

ELEV 9	TDZE 9
--------	--------



MIRL Rwy 9-27
 REIL Rwys 9 and 27



CATEGORY	A	B	C	D
RNP 0.30 DA	912-4 903 (1000-4)			

AUTHORIZATION REQUIRED

APP CRS	Rwy Idg	6600
083°	TDZE	9
	Apt Elev	9

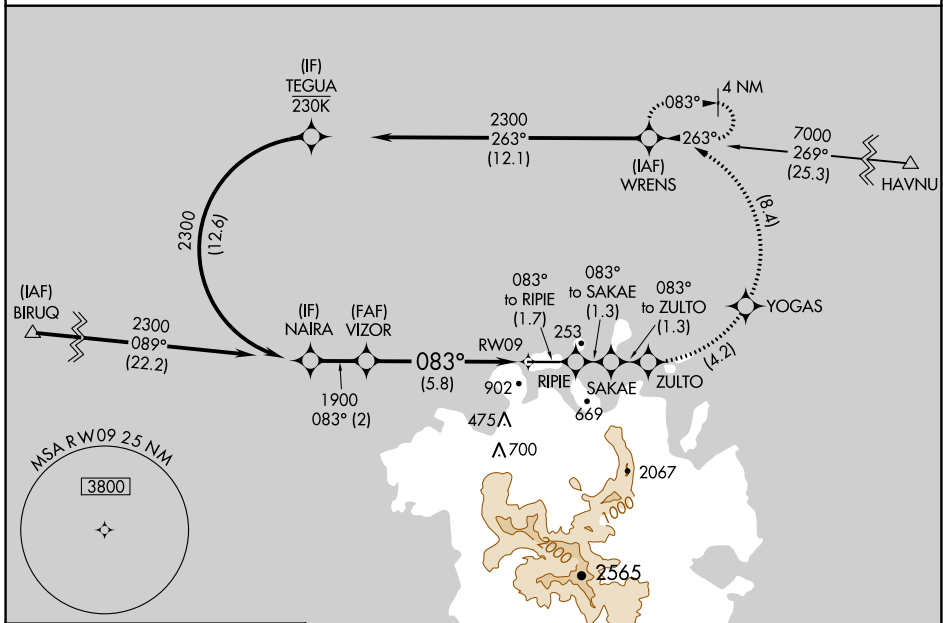
RNAV (RNP) Z RWY 9

POHNPEI INTL (PNI)(PTPN)

▼ Obtain local altimeter setting on CTAF; when not received, procedure NA. For uncompensated Baro-VNAV systems, procedure NA below 20°C (68°F) or above 54°C (130°F). Missed approach requires RNP less than 1.0. RF required. GPS required. No controlled airspace below 5500 feet.

MISSED APPROACH: (Do not exceed 230K until WRENS) Climb to 2300 on the RNAV missed approach route to WRENS and hold.

POHNPEI RADIO
123.6 (CTAF) 0



PAC, 25 JAN 2024 to 21 MAR 2024

PAC, 25 JAN 2024 to 21 MAR 2024

ELEV 9	TDZE 9
--------	--------

083° to RWY 9

6600 X 150

Z

MIRL Rwy 9-27 0

REIL Rwys 9 and 27

2300	RIPIE	SAKAE	ZULTO	YOGAS	WRENS
↑	tr 083°	tr 083°	tr 083°	↙	↙

See planview for multiple IF locations.

Procedure Turn NA

1900

083°

GP 3.00°

TCH 50

5.8 NM

CATEGORY	A	B	C	D
RNP 0.15 DA	259-1 250 (300-1)			

AUTHORIZATION REQUIRED

APP CRS	Rwy Idg	6600
083°	TDZE	9
	Apt Elev	9

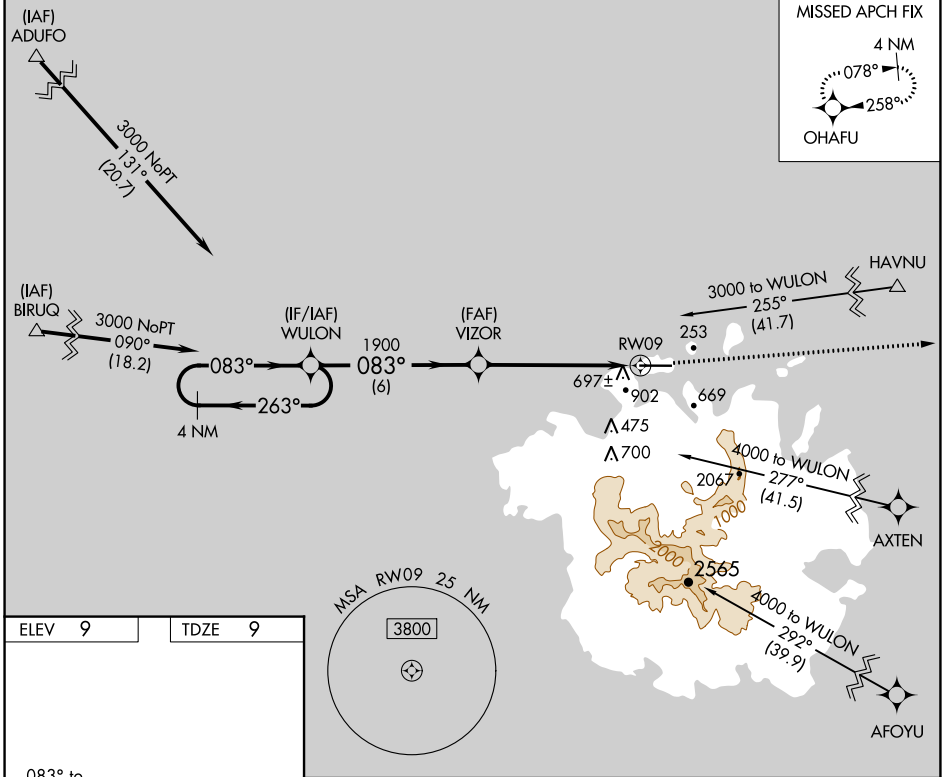
RNAV (GPS) X RWY 9

POHNPEI INTL (PNI)(PTPN)

⚠ Obtain local altimeter setting on CTAF; when not received, procedure NA. Circling NA south of Rwy 9-27. Procedure NA at night except by prior arrangement for runway lights.
⚠ DME/DME RNP-0.3 NA. No controlled airspace below 5500. Ships with maximum height of 150 feet MSL may traverse Pohnpei Channel 400 feet off approach end of runway, closing airport at times.

MISSED APPROACH:
 Climb to 3000 direct OHAFU and hold.

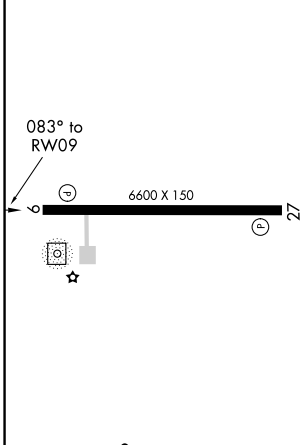
POHNPEI RADIO
123.6 (CTAF)



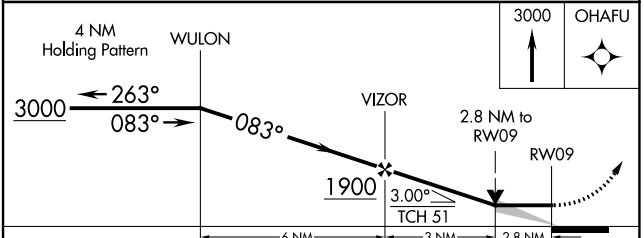
PAC, 25 JAN 2024 to 21 MAR 2024

PAC, 25 JAN 2024 to 21 MAR 2024

ELEV 9	TDZE 9
--------	--------



MIRL Rwy 9-27
 REIL Rwy 9 and 27



CATEGORY	A	B	C	D
LNAV MDA	960-1¼ 951 (1000-1¼)	960-1½ 951 (1000-1½)	960-3	951 (1000-3)
CIRCLING	960-1¼ 951 (1000-1¼)	960-1½ 951 (1000-1½)	960-3	951 (1000-3)