

APP CRS	Rwy Idg	6600
083°	TDZE	9
	Apt Elev	9

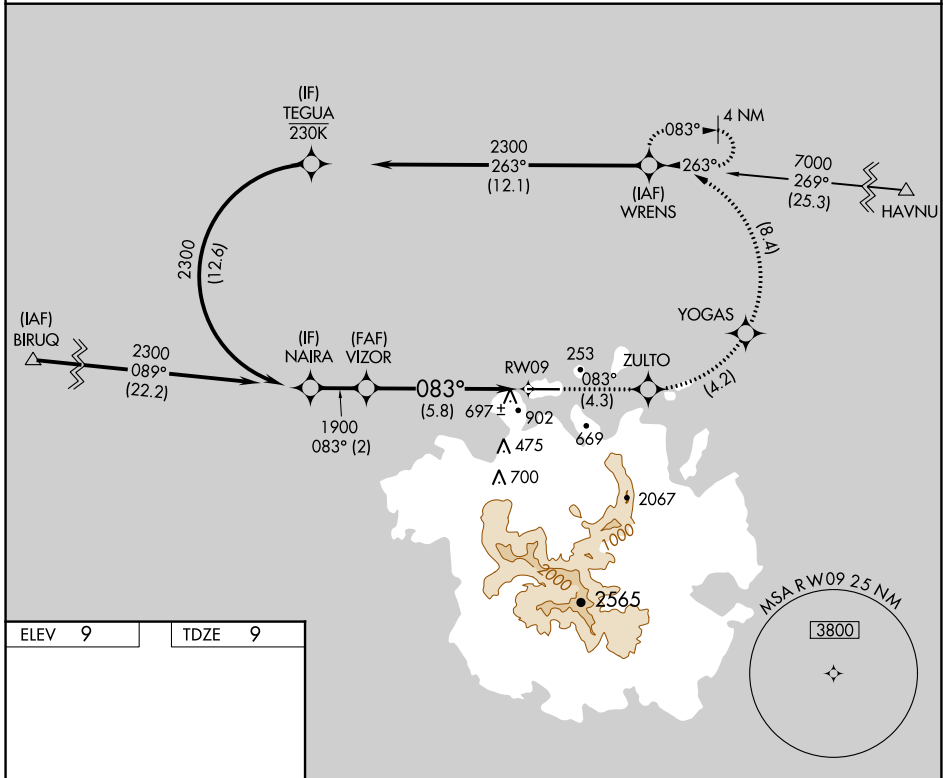
RNAV (RNP) Y RWY 9

POHNPEI INTL (PNI)(PTPN)

⚠ Obtain local altimeter setting on CTAF; when not received, procedure NA.
⚠ For uncompensated Baro-VNAV systems, procedure NA below 20°C (68°F) or above 54°C (130°F). Missed approach requires RNP less than 1.0. RF required. GPS required. No controlled airspace below 5500 feet.

MISSED APPROACH: (Do not exceed 230K until WRENS) Climb to 2300 on the RNAV missed approach route to WRENS and hold.

POHNPEI RADIO
123.6 (CTAF) ①



PAC, 25 JAN 2024 to 21 MAR 2024

PAC, 25 JAN 2024 to 21 MAR 2024

ELEV 9	TDZE 9
--------	--------

083° to RWY 9
 6600 X 150
 Z7

MIRL Rwy 9-27 ①
 REIL Rwys 9 and 27

VIZOR	2300	ZULTO	YOGAS	WRENS
Procedure Turn NA	↑ tr 083°	↙	↙	↙
1900	See planview for multiple IF locations.			
GP 3.00° TCH 50	RWY 9			
	5.8 NM			
CATEGORY	A	B	C	D
RNP 0.30 DA	912-4 903 (1000-4)			

AUTHORIZATION REQUIRED