

NDB/DME PNI 366	APP CRS 252°	Rwy Idg TDZE Apt Elev	N/A N/A 9
Chan 47 (111.0)			

NDB-A

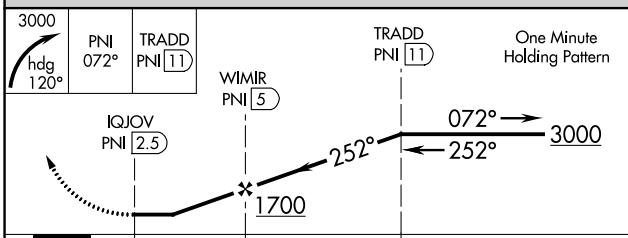
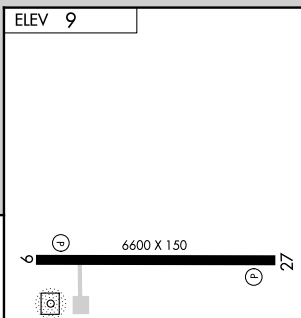
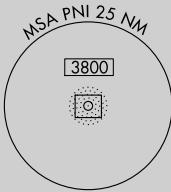
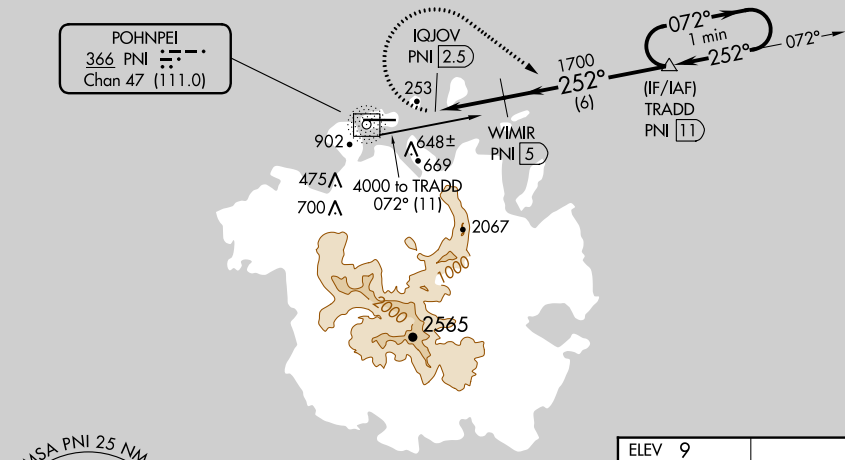
POHNPEI INTL (PNI)(PTPN)

⚠ Obtain local altimeter setting on CTAF; when not received, procedure NA. Circling NA south of Rwy 9-27. Procedure NA at night except by prior arrangement for runway lights. DME required. No controlled airspace below 5500 feet. Ships with maximum height of 150 feet MSL may traverse Pohnpei Channel 400 feet off approach end of runway 9, closing airport at times.

MISSED APPROACH: Climbing right turn to 3000 on heading 120° and on PNI NDB bearing 072° to TRADD/PNI 11 DME and hold.

POHNPEI RADIO
123.6 (CTAF) 0

DME REQUIRED



CATEGORY	A	B	C	D
C CIRCLING	960-1¾	951 (1000-1¾)	960-3	951 (1000-3)

MIRL Rwy 9-27 **0**
REIL Rwys 9 and 27

PAC, 25 JAN 2024 to 21 MAR 2024

PAC, 25 JAN 2024 to 21 MAR 2024