

(DORRL1.DORRL) 23110

AL-5972 (FAA)

POMPANO BEACH AIRPARK (PMP)
POMPANO BEACH, FLORIDA

DORRL ONE DEPARTURE (RNAV)

ATIS
120.55
GND CON
121.9

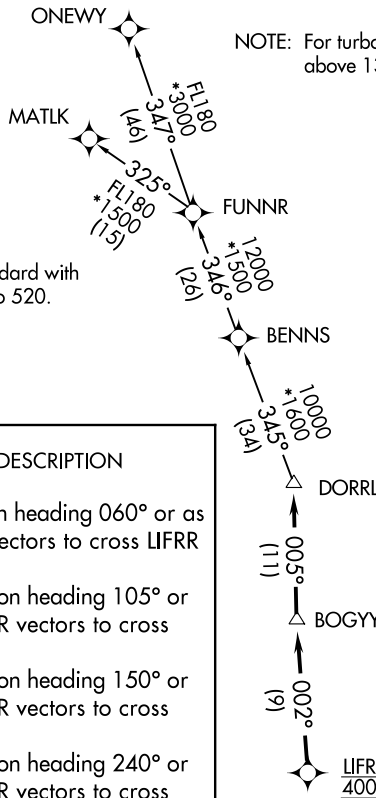
POMPANO BEACH TOWER ★
125.4 (CTAF)
MIAMI DEP CON
126.05 251.1

**TOP ALTITUDE:
ASSIGNED BY ATC**

RNAV 1 - DME/DME/IRU or GPS.

RADAR required.

NOTE: For turbo-props/props filed at or above 13000.



TAKEOFF MINIMUMS

Rwys 6, 10, 15, 24, 28, 33: Standard with minimum climb of 500' per NM to 520.

DEPARTURE ROUTE DESCRIPTION

TAKEOFF RUNWAY 6: Climb on heading 060° or as assigned by ATC for RADAR vectors to cross LIFRR at 4000, thence. . . .

TAKEOFF RUNWAY 10: Climb on heading 105° or as assigned by ATC for RADAR vectors to cross LIFRR at 4000, thence. . . .

TAKEOFF RUNWAY 15: Climb on heading 150° or as assigned by ATC for RADAR vectors to cross LIFRR at 4000, thence. . . .

TAKEOFF RUNWAY 24: Climb on heading 240° or as assigned by ATC for RADAR vectors to cross LIFRR at 4000, thence. . . .

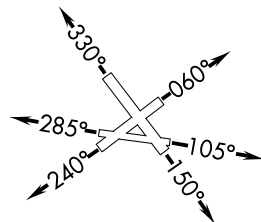
TAKEOFF RUNWAY 28: Climb on heading 285° or as assigned by ATC for RADAR vectors to cross LIFRR at 4000, thence. . . .

TAKEOFF RUNWAY 33: Climb on heading 330° or as assigned by ATC for RADAR vectors to cross LIFRR at 4000, thence. . . .

. . . .on track 002° to BOGY, then on track 005° to DORRL then on (transition), maintain altitude as assigned by ATC, expect filed altitude 10 minutes after departure.

MATLK TRANSITION (DORRL1.MATLK)

ONEWY TRANSITION (DORRL1.ONEWY)



NOTE: Chart not to scale.

DORRL ONE DEPARTURE (RNAV)

(DORRL1.DORRL) 19MAY22

POMPANO BEACH, FLORIDA
POMPANO BEACH AIRPARK (PMP)

SE-3, 22 FEB 2024 to 21 MAR 2024

SE-3, 22 FEB 2024 to 21 MAR 2024