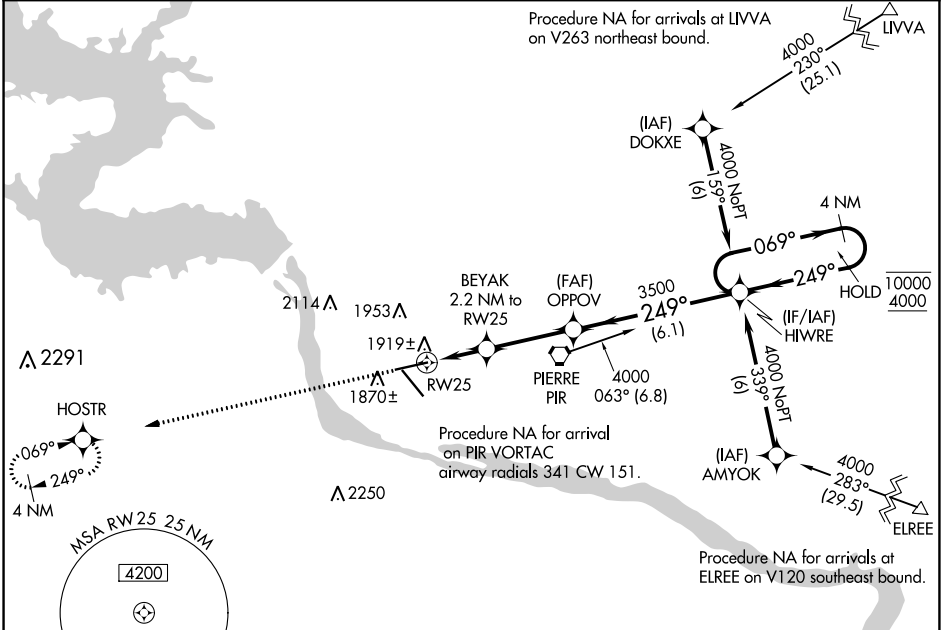


WAAS CH <b>63104</b> <b>W25A</b>	APP CRS <b>249°</b>	Rwy Idg TDZE Apt Elev	<b>6880</b> <b>1725</b> <b>1744</b>
--	------------------------	-----------------------------	---

# RNAV (GPS) RWY 25

PIERRE RGNL (PIR)

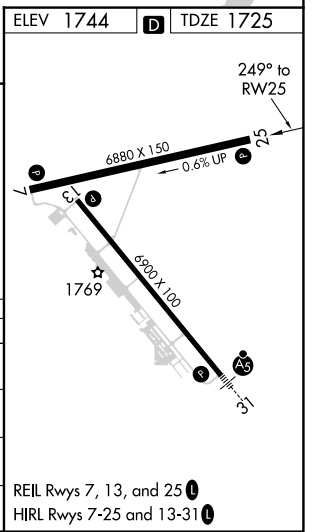
RNP APCH.		MISSED APPROACH: Climb to 4000 direct HOSTR and hold.	
<p>▼ For uncompensated Baro-VNAV systems, LNAV/VNAV ▲ NA below -26°C or above 54°C.</p>		ASOS <b>119.025</b>	MINNEAPOLIS CENTER <b>125.1 269.1</b>
		CTAF <b>122.70</b>	UNICOM <b>122.95</b>



NC-1, 22 FEB 2024 to 21 MAR 2024

NC-1, 22 FEB 2024 to 21 MAR 2024

ELEV 1744	TDZE 1725
4000	HOSTR
*LNAV only	BEYAK 2.2 NM to RW25
RW25	OPPOV 3500
*1.3 NM to RW25	HIWRE 4 NM Holding Pattern
2440*	10000 4000
3500	GP 3.00° TCH 54
1.3 NM 0.9 3.2 NM 6.1 NM	
CATEGORY	A B C D
LPV DA	1975-1 250 (300-1)
LNAV/VNAV DA	2179-1¾ 454 (500-1¾)
LNAV MDA	2180-1 455 (500-1) 2180-1¼ 455 (500-1¼) 2180-1½ 455 (500-1½)
CIRCLING	2240-1 2300-1 2400-1¾ 2460-2¼ 496 (500-1) 556 (600-1) 656 (700-1¾) 716 (800-2¼)



REIL Rwy 7, 13, and 25  
HIRL Rwy 7-25 and 13-31