

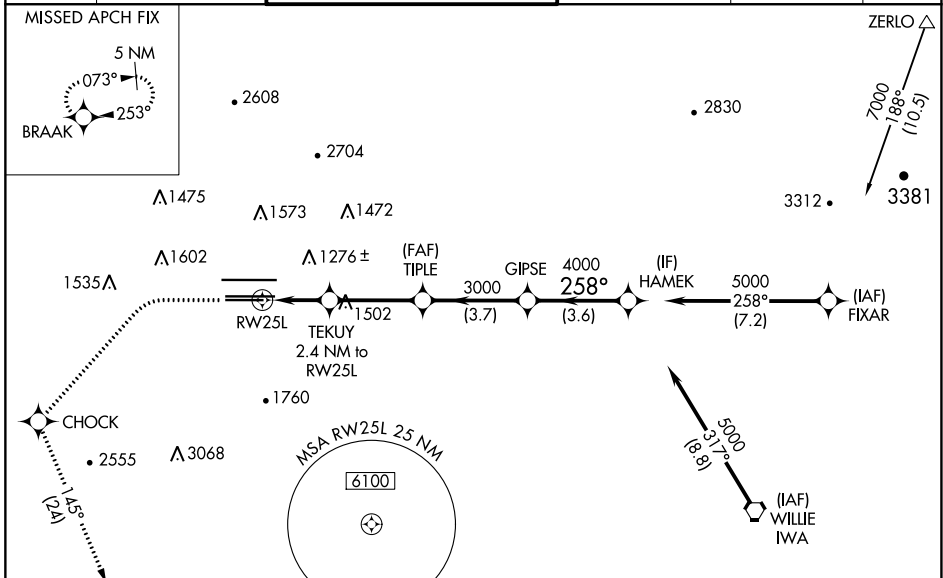
WAAS CH 82211 W25B	APP CRS 258°	Rwy Idg TDZE Apt Elev	7800 1126 1135
--	------------------------	-----------------------------	---

RNAV (GPS) Y RWY 25L

PHOENIX SKY HARBOR INTL (PHX)

RNP APCH-GPS.	MALSR 	MISSED APPROACH: Climb to 1900 then climbing left turn to 5000 direct CHOCK and on track 145° to BRAAK and hold.
---------------	-----------	--

D-ATIS 127.575	PHOENIX APP CON 128.65 353.9	PHOENIX TOWER 118.7 278.8 (Rwy 8-26) 120.9 254.3 (Rwy 7L-25R, 7R-25L)	GND CON 119.75 269.2 (N) 132.55 269.2 (S)	CLNC DEL 118.1 269.2	CPDLC
--------------------------	--	---	---	--------------------------------	-------



ELEV 1135	D	TDZE 1126
-----------	----------	-----------

<p>HIRL Rwy 25L</p> <p>REIL Rwy 26</p>	1900	5000	CHOCK	tr 145°	BRAAK	VGSi and RNAV glidepath not coincident (VGSi Angle 3.00/TCH 66). HAMEK GIPSE TIPLE TEKUY 2.4 NM to RWY 25L 1.7 NM to RWY 25L RWY 25L 1940 3000 3000 4000 258° 5000 GP 3.00° TCH 49
	1.7 NM	0.7 NM	3.3 NM	3.7 NM	3.6 NM	
	CATEGORY	A	B	C	D	
	LPV DA	1449-½ 323 (400-½)				
	LNAV/VNAV DA	1589-1 463 (500-1)			1674-1½ 548 (600-1½)	
LNAV MDA	1740-½ 614 (700-½)		1740-¾ 614 (700-¾)			
C CIRCLING	1740-1 605 (700-1)		2040-¾ 1205 (1300-¾)			

SW-4, 22 FEB 2024 to 21 MAR 2024

SW-4, 22 FEB 2024 to 21 MAR 2024