

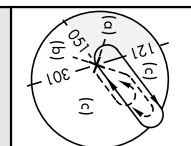
VIGO, GUAM I, GUAMM

# HI-ILS Y or LOC/DME Y RWY 06L

23110

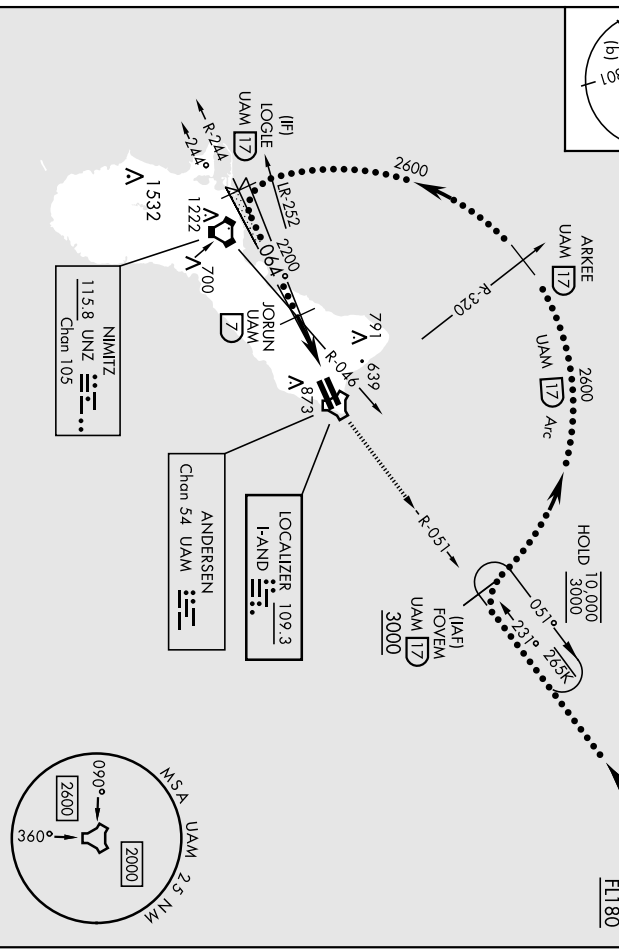
LOC I-AND <b>109.3</b>	APCH CRS <b>064°</b>	Req'd Idg TDZE <b>539</b> App'l Elev <b>617</b>	AL-21.47 [USAF]	ANDERSEN AFB (PGUA)
---------------------------	-------------------------	---	-----------------	---------------------

AIC RADAR monitoring required.	SALS 	MISSED APPROACH: Climb to 3000, intercept UAM R-051 to FOVEM and hold.
<b>118.175 254.325</b> AITS <b>119.8 269.0</b> GUAM APP CON	TOWER <b>126.2 233.7</b> GUAM APP CON	GND CON <b>121.7 275.8</b> GUAM APP CON
CINC DEL <b>126.725 256.7</b> GUAM APP CON		



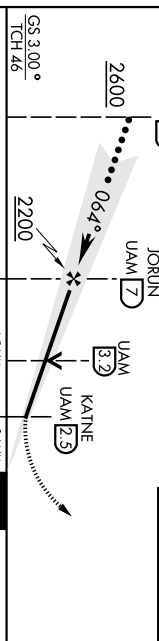
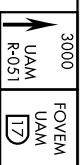
CAUTION: Environmentally sensitive area flights along Andersen cliffline restricted to 1000' AGLI or above.

All touchdown zones have a 1.0% down slope.

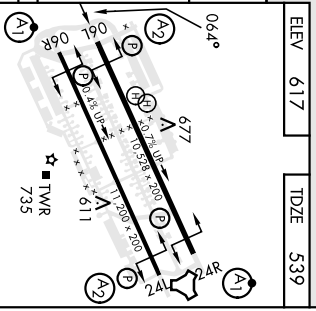


EMERG SAFE ALT 100 NM 2900

VGSI and ILS glidepath not obstructed (VGSI Angle 3.00/TCH 59')



GS 3.00° TCH 46'					
CATEGORY	A	B	C	D	E
S-ILS 06L	739/40				
S-LOC 06L*	1020/40	481 (500-3/4)	1020/60	481 (500-1/2)	1240-2/4
CIRCLING**	443 (500-1)	463 (500-1)	623 (700-13/4)	623 (700-2)	623 (700-2 1/4)



ELEV	617	TDZE	539
------	-----	------	-----

VIGO, GUAM I, GUAM 13° 35'N-124° 56'E ANDERSEN AFB (PGUA)

Orig 12AUG21 HI-ILS Y or LOC/DME Y RWY 06L

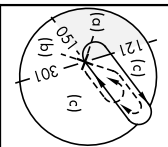
VIGO, GUAMI I, GUAM

23334

# HI-TACAN X RWY 06L

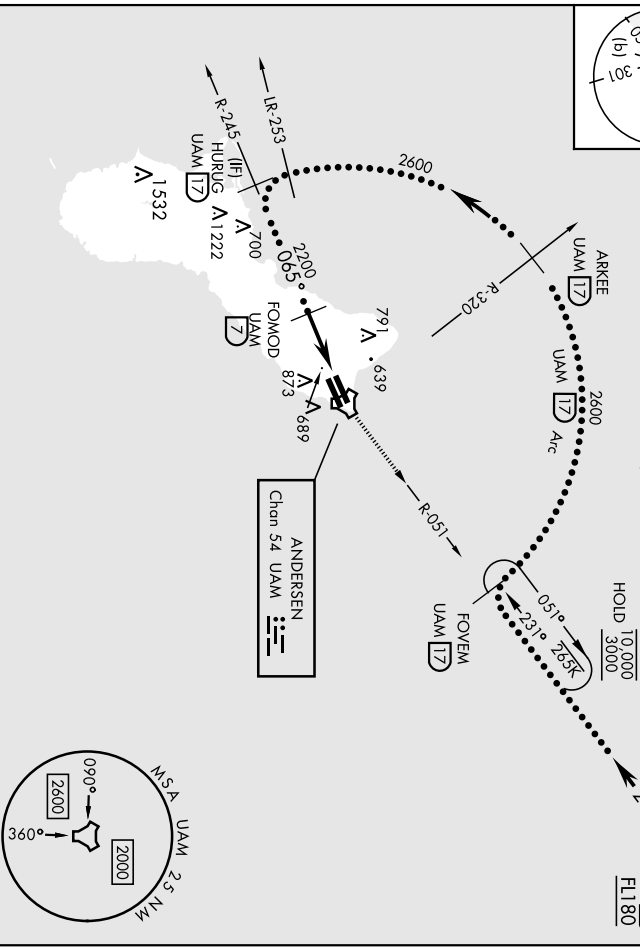
ANDERSEN AFB (PGUA)

TACAN UAM Chon 54	APCH CRS 065°	Rwy Idg TDZE Appt Elev	10,528 539 617	[USAF]	SALS A2	MISSED APPROACH: Climb to 3000, intercept UAM R-051 to FOVM and hold.	GND CON	121.7 275.8	CINCDDEL	126.725 256.7
RADAR or DME required		* When AIS Inop, increase CAT AB RVR to 55, vis to 1 mile; CAT CDE vis to 1/2 miles. ** Circling not authorized NW of Rwy 06L-24R.								
AIS	GUAM APP CON	TOWER	118.175 254.325	119.8 269.0	126.2 233.7					

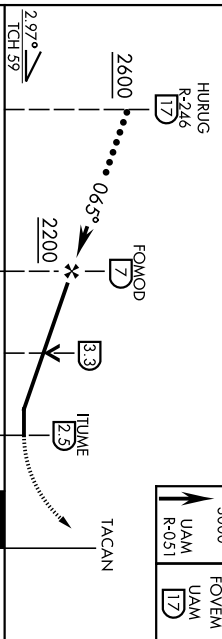
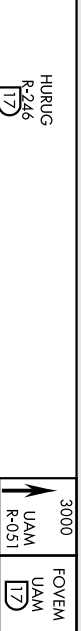


CAUTION: Environmentally sensitive area  
Flights along Andersen dftt line restricted to  
1000' AGL or above.

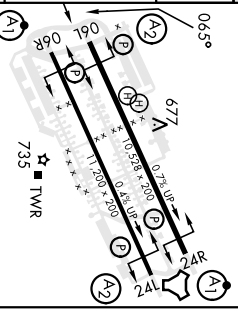
All touchdown zones have a 1.0% down slope.



EMERG SAFE ALIT 100 NM 2900



CATEGORY	A	B	C	D	E
S-061*	1040/40	501 (500-3/4)	1040/1 1/4	501 (500-1/4)	
** CIRCLING	1060-1	1080-1	1240-1 3/4	1240-2	1240-2 1/4
	443 (500-1)	463 (500-1)	623 (700-1 3/4)	623 (700-2)	623 (700-2 1/4)



VIGO, GUAMI I, GUAM

13° 35'N-174° 56' E

Andr 1 30NOV23  
TERPS

# HI-TACAN X RWY 06L

ANDERSEN AFB (PGUA)

VIGO, GUAMI I, GUAM

# IIS Z or LOC/DME Z RWY 24L

AI-2147 [USAF]

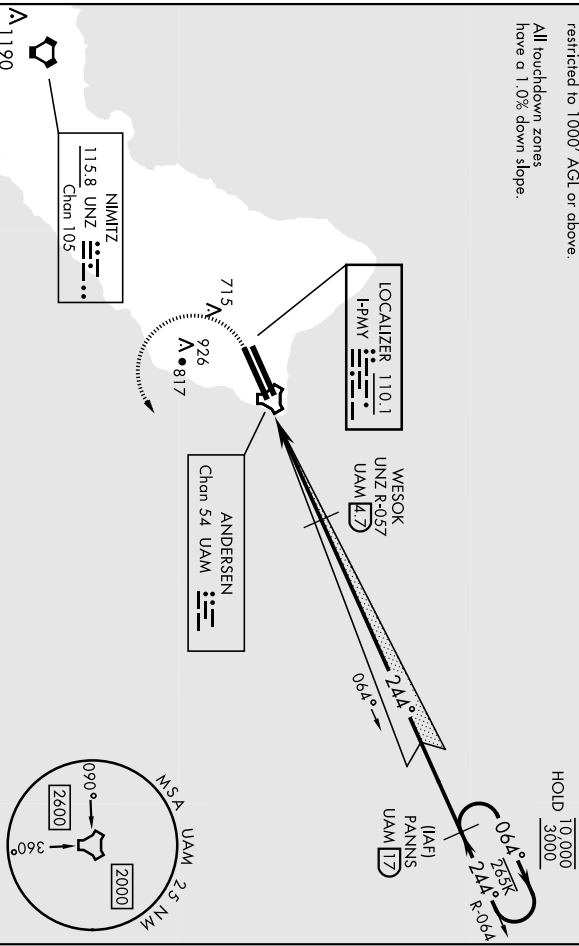
ANDERSEN AFB (PGUA)

LOC FPMY <b>110-1</b>	ARCD CRS <b>244°</b>	Req./Idg TDZE Appt Elev <b>607 617</b>	AI-2147 [USAF]	TOWER <b>126.2 233.7</b>	GND CON <b>121.7 275.8</b>	CINCL DEL <b>126.725 256.7</b>
<p>▼ * When AIS inop, increase RVR to 45, vis to 1/2 mile. ** When AIS inop, increase CAT AB RVR to 55, vis to 1 mile. *** Circling not authorized NW of Rwy 06L-24R</p>		SALS 	MISSED APPROACH: Climb to 1200, then climbing left turn to 3000 to intercept UAM R-064 direct PANNIS and hold.			
AIS <b>118.175 254.325</b>	GUAM APP CON <b>119.8 269.0</b>					

CAUTION: GS unstable below 900' MSU/300' AGL due to runway supervisory unit.

CAUTION: Environmentally Sensitive Area Flights along Andersen cliffline restricted to 1000' AGL or above.

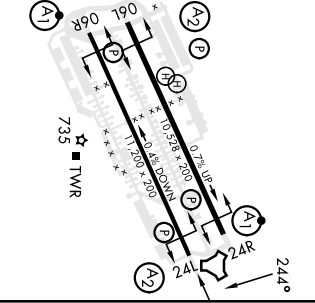
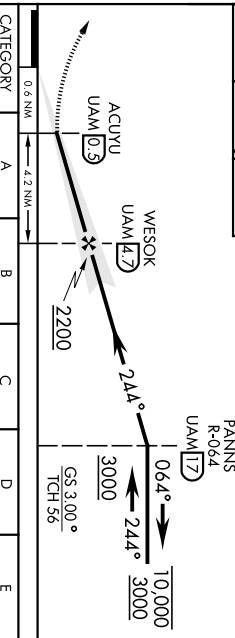
All touchdown zones have a 1.0% down slope.



EMERG SAFE ALT 100 NM 2900

1200	3000	PANNIS	VGSI and descent Angle not coincident.
UAM	UAM	UAM	VGSI and ILS glidepath not coincident
R-064			(VGSI Angle 3.00/TCR 43).

ELEV	617	TDZE	607
------	-----	------	-----



CATEGORY	A	B	C	D	E
S-ILS 24L*	900/40				
293	(300-3/4)				
S-LOC 24L***	940/40	333 (400-3/4)	940/45	333 (400-2/8)	
***	1060-1	1080-1	1240-1 3/4	1240-2	1240-2 1/4
CIRCLING	443 (500-1)	463 (500-1)	623 (700-1 3/4)	623 (700-2)	623 (700-2 1/4)

VIGO, GUAMI I, GUAM	13° 35'N-124° 56' E	HIRL all rwys	ANDERSEN AFB (PGUA)
---------------------	---------------------	---------------	---------------------

Orig 12AUG21  
TERPS

IIS Z or LOC/DME Z RWY 24L

# ILS Z or LOC/DME Z RWY 24R

AI-2147 [USAF]

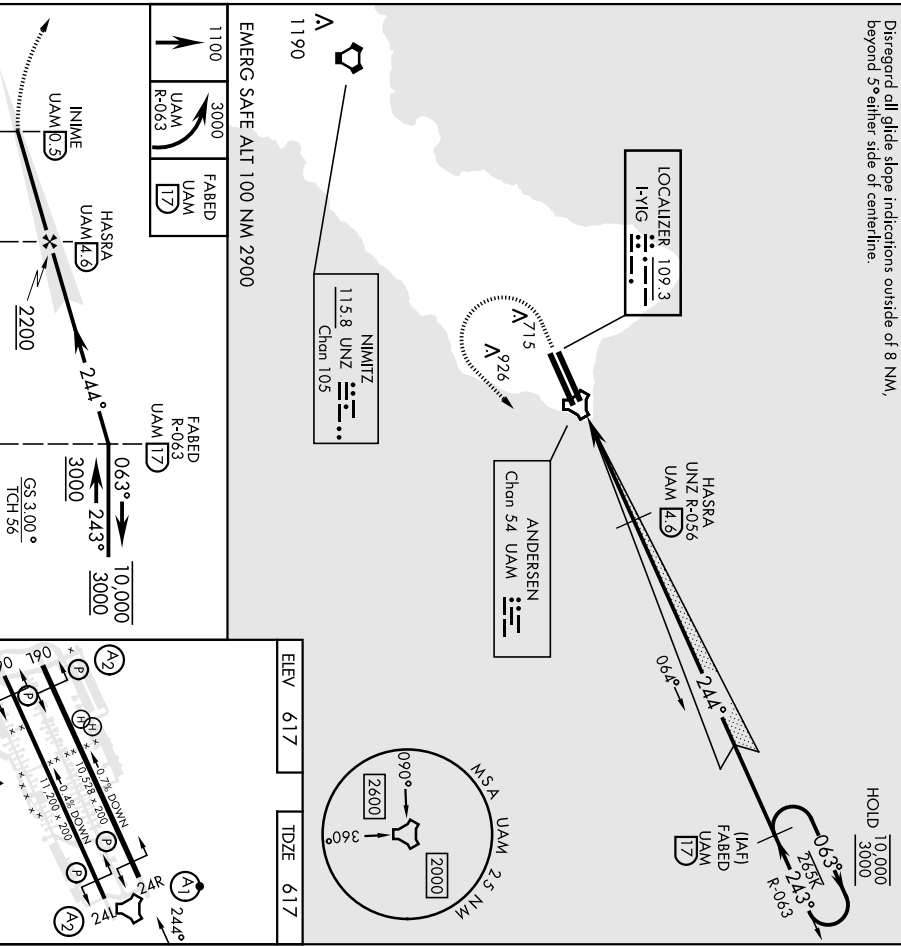
ANDERSEN AFB (PGUA)

LOC I-YIG <b>109.3</b>	APCH CRS <b>244°</b>	Rwy Idg TDZE Elev App'l Elev <b>617</b> <b>617</b> <b>617</b>	AI-2147 [USAF]
AIIIS <b>118.175 254.325</b>		GUAM APP CON <b>119.8 269.0</b>	TOWER <b>126.2 233.7</b>
MISSED APPROACH: Climb to 1100, then climbing left turn to 3000 to intercept UAM R-063 direct FABED and hold.		GND CON <b>121.7 275.8</b>	CINC DEL <b>126.725 256.7</b>

**CAUTION:** Environmentally Sensitive Area  
Flights along Andersen cliffline restricted to 1000' AGL or above.

All touchdown zones  
beyond 1.0% down slope.

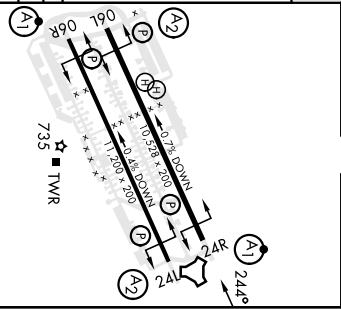
Disregard all glide slope indications outside of 8 NM,  
beyond 5° either side of centerline.



EMERG SAFE ALT 100 NM 2900

1100	3000	FABED UAM R-063	FABED UAM 17
<p>0.7 NM</p> <p>4.1 NM</p> <p>UAM 0.5</p> <p>UAM 4.9</p> <p>2200</p> <p>2.44°</p> <p>06.3°</p> <p>24.3°</p> <p>10,000</p> <p>3000</p> <p>3000</p> <p>GS 3.00°</p> <p>TCH 56</p>			
CATEGORY	A	B	C
S-ILS 24R*	817/24 200 (200-½)		
S-LOC 24R***	940/24 323 (400-½)	940/26 323 (400-½)	1240-2 ¼
DIRCLING	1060-1	1080-1	1240-1¾
	443 (500-1)	463 (500-1)	623 (700-1¾)

ELEV	617	TDZE	617
------	-----	------	-----



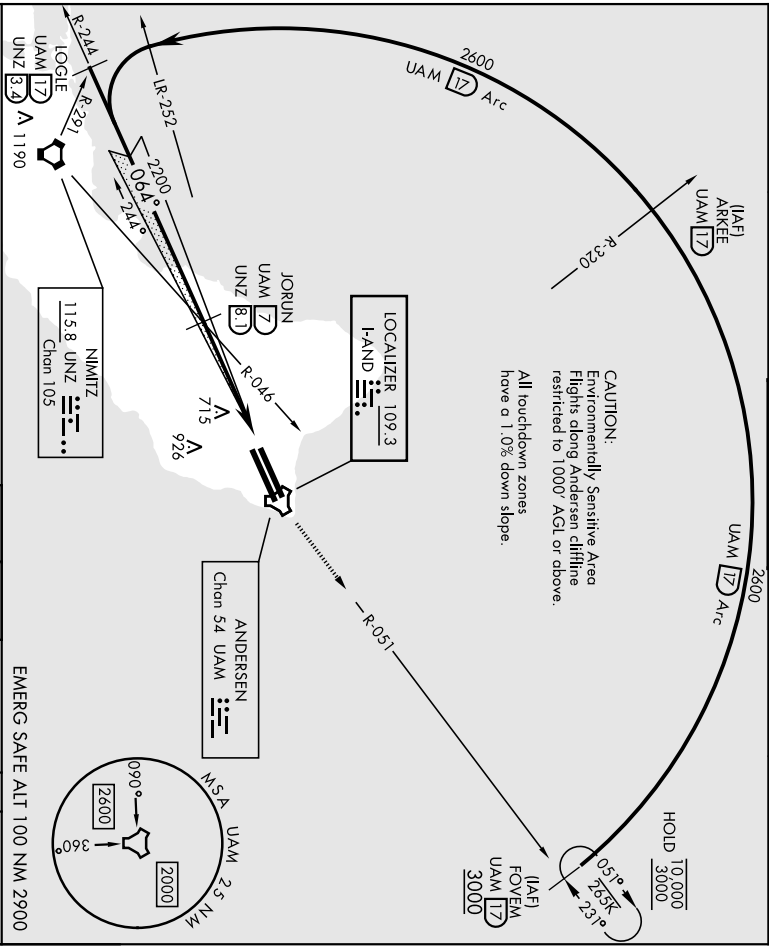
YIGO, GUAM I, GUAM  
13° 35'N-124° 56' E  
ANDERSEN AFB (PGUA)  
Orig 12AUG21  
TERPS  
ILS Z or LOC/DME Z RWY 24R

# IIS Z or LOC/DME Z RWY 06L

AI-2147 [USAF]

ANDERSEN AFB (PGUA)

LOC I-AND <b>109.3</b>	APCH CRS <b>064°</b>	Rev./Idg TDZE <b>539</b> App'l Elev. <b>617</b>	TOWER		GND CON	CINC DEL
ATIS <b>118.175 254.325</b>		GUAM APP CON <b>119.8 269.0</b>	<b>126.2 233.7</b>	<b>121.7 275.8</b>	<b>126.725 256.7</b>	
<p>▼ ** When AIS Inop, increase CAT AB RVR to 55, vis to 1 mile; CAT CDE vis to 1 3/8 miles. ** Circling not authorized NW of Rwy 06L-24R.</p>		<p>SAIS <b>A2</b></p>		<p>MISSED APPROACH: Climb to 3000, intercept UAM R-051 to FOVEM and hold.</p>		



EMERG SAFE ALT 100 NM 2900

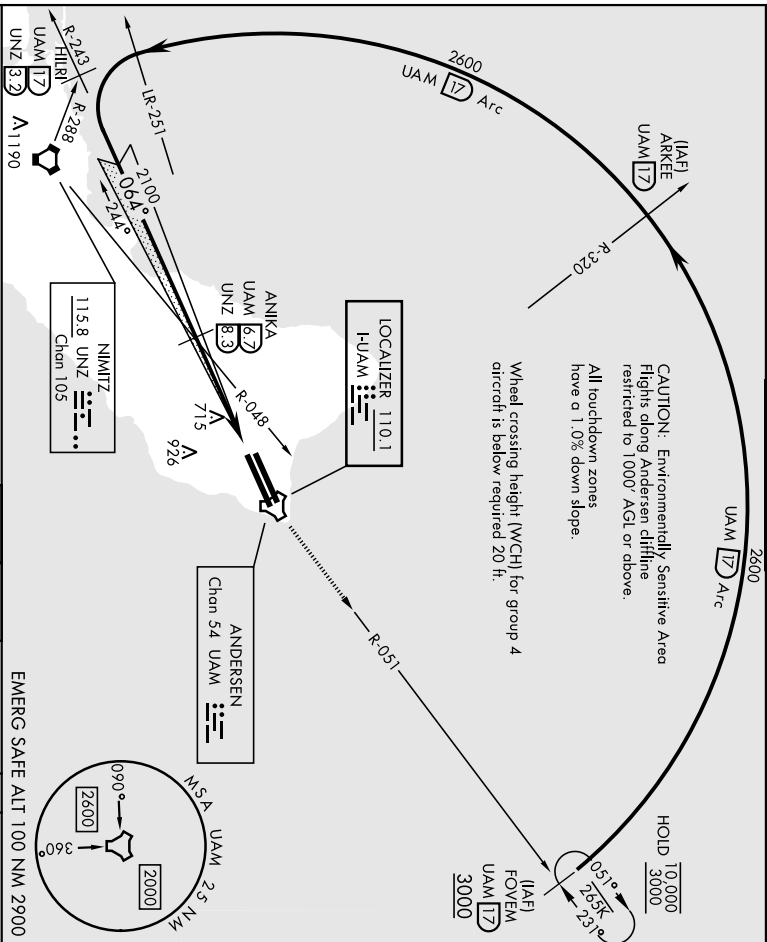
CATEGORY	A	B	C	D	E
S-ILS 06L	739/40		200	(200-3/1)	
S-LOC 06L*	1020/40		1020/60	481	(500-1/8)
CIRCLING**	1060-1	1080-1	1240-1 3/4	1240-2	1240-2 1/4
	443 (500-1)	463 (500-1)	623 (700-1 3/4)	623 (700-2)	623 (700-2 1/4)
HRL all rwy's					
FAE to MAP 4.5 NM					
Knots		60	90	120	150 180
Min:Sec		4:30	3:00	2:15	1:48 1:30

VICO, GUAM I, GUAM  
 Arrch 1 08SEP22  
 TERPS  
**IIS Z or LOC/DME Z RWY 06L**  
 ANDERSEN AFB (PGUA)  
 13°35'N-144°56'E

# ILS Z or LOC/DME Z RWY 06R

ANDERSEN AFB (PGUA)

LOC I-UAM <b>110.1</b>	APCH CRS <b>064°</b>	Req./Idg TDZE 557 Appt Elev 617	AL-2147 [USAF]	ANDERSEN AFB (PGUA)
** When ALS inop, increase RVR to 40, vis to 3/4 mile. ** When ALS vis to 1 1/2 miles. *** CAT CDE vis to 1 1/2 miles. *** Circling not authorized NW of Rwy 06L-24R.		A1S-F-1 	MISSED APPROACH: Climb to 3000, intercept UAM R-051 to FOVEM and hold.	
ATIS <b>118.175 254.325</b>	GUAM APP CON <b>119.8 269.0</b>	TOWER <b>126.2 233.7</b>	GND CON <b>121.7 275.8</b>	CLNC DEL <b>126.725 256.7</b>



GS 3.00° TCH 43	2600 2100 064° 2100	3000 UAM R-051 FOVEM UAM 17 ELEV 617 TDZE 557	3000 UAM R-051 FOVEM UAM 17 ELEV 617 TDZE 557
CATEGORY	A B C D E	EMERG SAFE ALT 100 NM 2900	
S-ILS 06R *	757/24	200	
S-LOC 06R **	1040/24 483 (500-1/2)	1040/50 483 (500-1)	
CIRCLING ***	1060-1	1080-1	1240-1 3/4
	443 (500-1)	463 (500-1)	623 (700-1 3/4)
	1240-2	1240-2 1/4	1240-2 1/2
	623 (700-2)	623 (700-2)	623 (700-2 1/2)
HIRL all runways FAF to MAP 4.2 NM Knots 60 90 120 150 180 Min:Sec 4:12 2:48 2:06 1:41 1:24			

# ILS Z or LOC/DME Z RWY 06R

ANDERSEN AFB (PGUA)

YIGO, GUAM I, GUAM

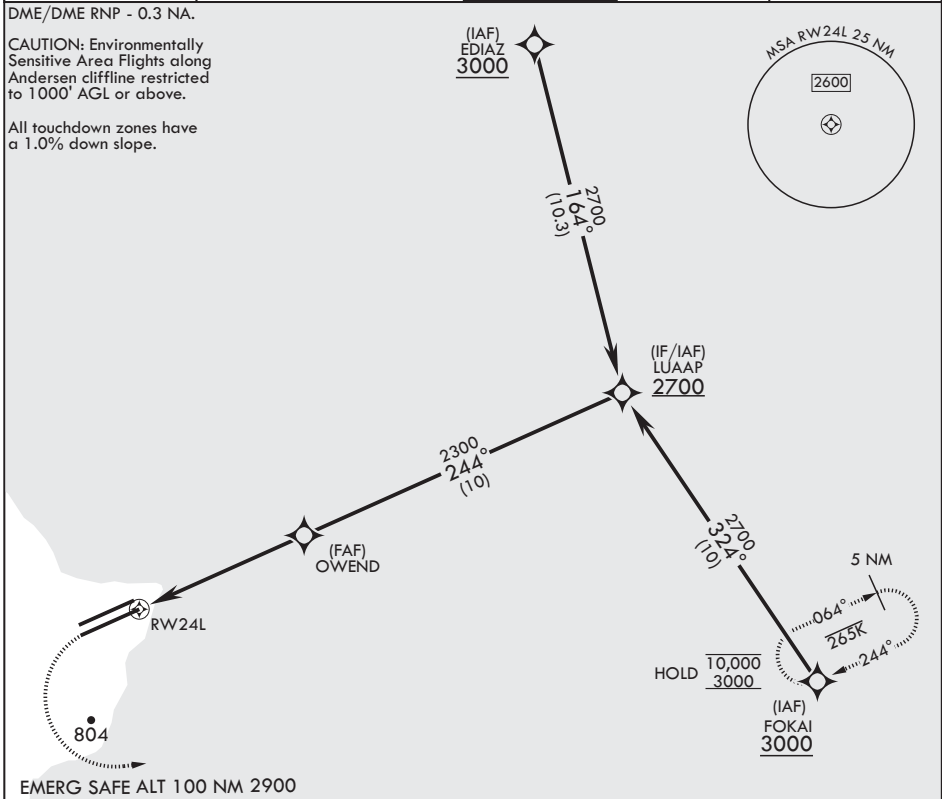
# RNAV (GPS) RWY 24L

APCH CRS	Rwy Idg	11,200
244°	TDZE	607
	Arprt Elev	617

AL-2147 (USAF)

ANDERSEN AFB (PGUA)

RNP APCH		SALS	MISSED APPROACH: Climb to 1200, then climbing left turn to 3000 direct FOKAI and hold.	
<p>⚠ * When ALS inop, increase CAT AB RVR to 55, vis to 1 mile; CAT CDE RVR to 50, vis to 1 mile. ** Circling not authorized NW of Rwy 06L-24R.</p>		(A2)		
ATIS	GUAM APP CON/DEP CON	TOWER	GND CON	CLNC DEL
118.175 254.325	119.8 269.0	126.2 233.7	121.7 275.8	126.725 256.7



1200	3000	FOKAI	LUAAP			ELEV 617	TDZE 607
CATEGORY	A	B	C	D	E		
LNAV MDA*	940/40 333 (400-¾)		940/45 333 (400-¾)				
CIRCLING**	1060-1 443 (500-1)	1080-1 463 (500-1)	1240-1¾ 623 (700-1¾)	1240-2 623 (700-2)	1240-2¼ 623 (700-2¼)		
						HIRL all Rwys	

YIGO, GUAM I, GUAM

13°35'N - 144°56'E

ANDERSEN AFB (PGUA)

Amdt 1 17JUN21  
TERPS

# RNAV (GPS) RWY 24L

PAC, 25 JAN 2024 to 21 MAR 2024

PAC, 25 JAN 2024 to 21 MAR 2024

YIGO, GUAM I, GUAM

# RNAV (GPS) RWY 24R

APCH CRS <b>244°</b>	Rwy Idg TDZE Arprt Elev	<b>10,528</b> <b>617</b> <b>617</b>
-------------------------	-------------------------------	---

AL-2147 (USAF)

ANDERSEN AFB (PGUA)

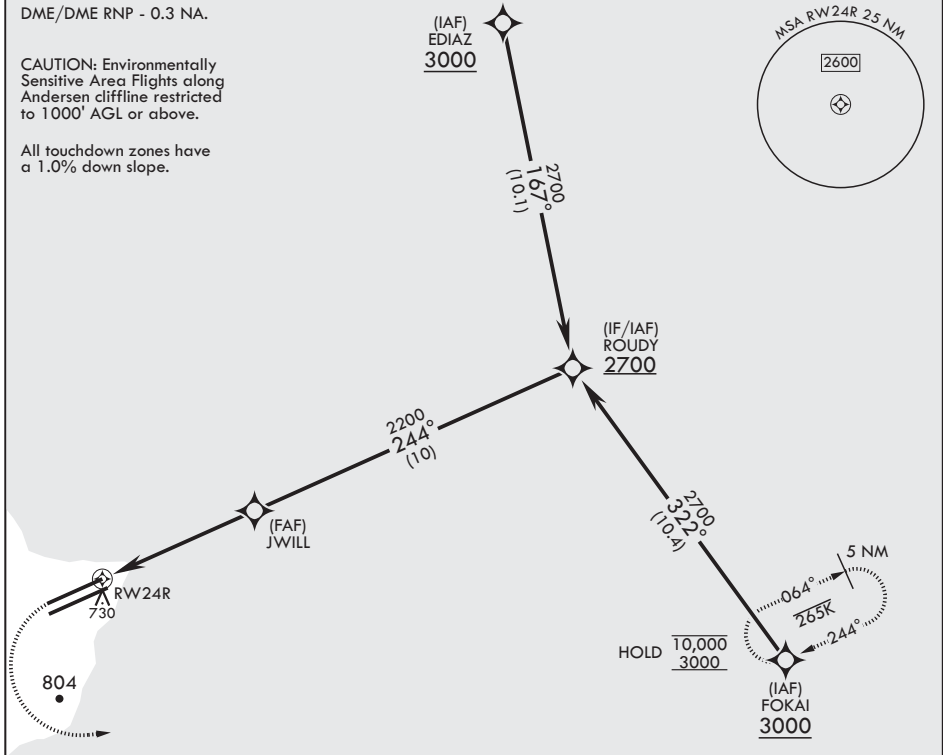
RNP APCH * When ALS inop, increase RVR to 55, vis to 1 mile. ** Circling not authorized NW of Rwy 06L-24R.	ALSF-1 	MISSED APPROACH: Climb to 1200, then climbing left turn to 3000 direct FOKAI and hold.
--	------------	--

ATIS <b>118.175 254.325</b>	GUAM APP CON/DEP CON <b>119.8 269.0</b>	TOWER <b>126.2 233.7</b>	GND CON <b>121.7 275.8</b>	CLNC DEL <b>126.725 256.7</b>
--------------------------------	--	-----------------------------	-------------------------------	----------------------------------

DME/DME RNP - 0.3 NA.

CAUTION: Environmentally Sensitive Area Flights along Andersen cliffline restricted to 1000' AGL or above.

All touchdown zones have a 1.0% down slope.



EMERG SAFE ALT 100 NM 2900

 		ELEV 617	TDZE 617		
CATEGORY	A	B	C	D	E
LNAV MDA*	960/24 343 (400-½)	960/30 343 (400-¾)	960/30 343 (400-¾)	960/30 343 (400-¾)	960/30 343 (400-¾)
CIRCLING**	1060-1 443 (500-1)	1080-1 463 (500-1)	1240-1¾ 623 (700-1¾)	1240-2 623 (700-2)	1240-2¼ 623 (700-2¼)

YIGO, GUAM I, GUAM

13°35'N - 144°56'E

ANDERSEN AFB (PGUA)

Amdt 1 17JUN21  
TERPS

# RNAV (GPS) RWY 24R

PAC, 25 JAN 2024 to 21 MAR 2024

PAC, 25 JAN 2024 to 21 MAR 2024



YIGO, GUAM I, GUAM

# RNAV (GPS) RWY 06L

APCH CRS <b>064°</b>	Rwy Idg TDZE Arprt Elev	<b>10,528</b> <b>539</b> <b>617</b>
-------------------------	-------------------------------	---

AL-2147 (USAF)

ANDERSEN AFB (PGUA)

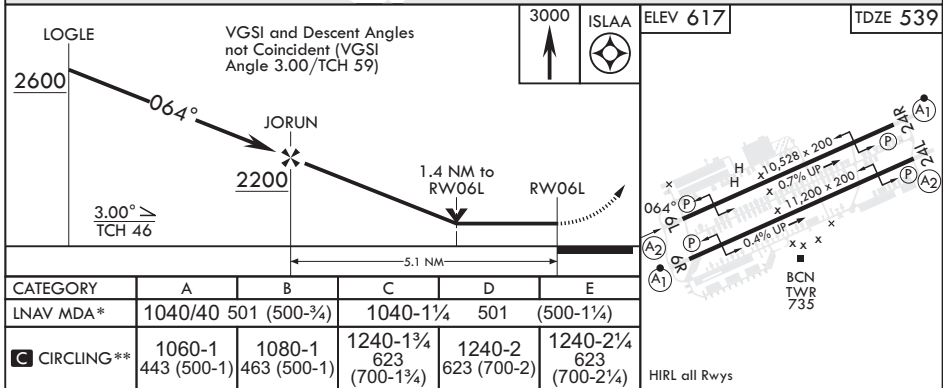
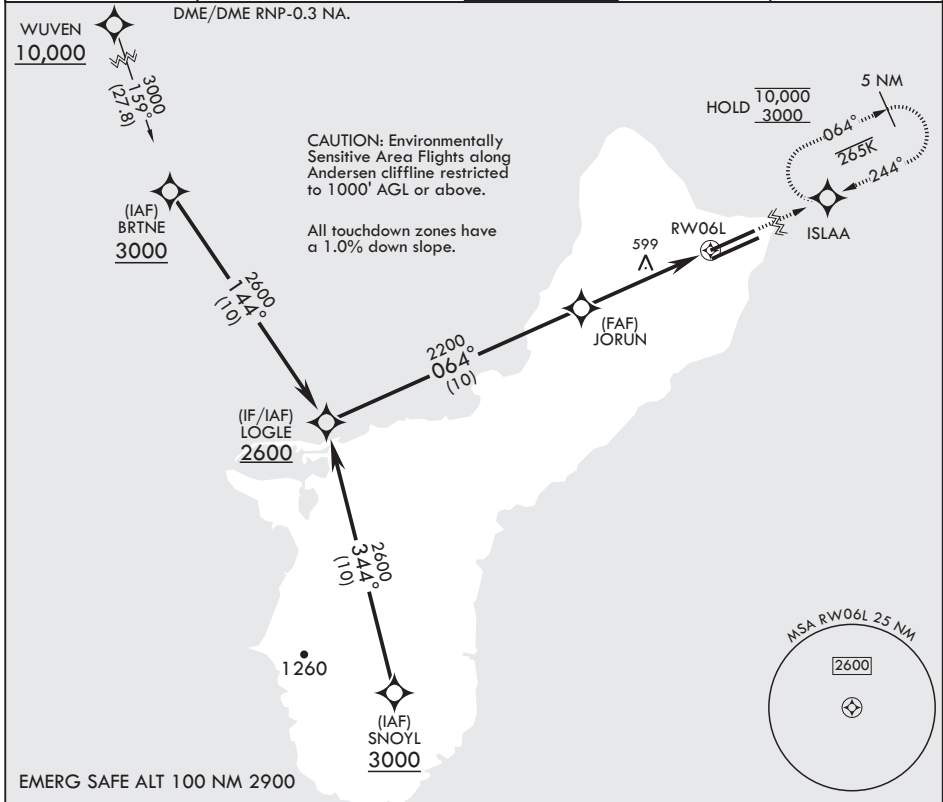
RNP APCH

SALS

MISSED APPROACH: Climb to 3000 direct ISLAA and hold.

\* When ALS inop increase CAT AB RVR to 55, vis to 1 mile; CAT CDE vis to 1 3/8 miles.  
\*\* Circling not authorized NW of Rwy 06L-24R. Circling not authorized to Rwys 06L and 24R.

ATIS <b>118.175 254.325</b>	GUAM APP CON/DEP CON <b>119.8 269.0</b>	TOWER <b>126.2 233.7</b>	GND CON <b>121.7 275.8</b>	CLNC DEL <b>126.725 256.7</b>
--------------------------------	--	-----------------------------	-------------------------------	----------------------------------



YIGO, GUAM I, GUAM

13°35'N - 144°56'E

ANDERSEN AFB (PGUA)

Amdt 1 17JUN21  
TERPS

# RNAV (GPS) RWY 06L

PAC, 25 JAN 2024 to 21 MAR 2024

PAC, 25 JAN 2024 to 21 MAR 2024

YIGO, GUAM I, GUAM

# RNAV (GPS) RWY 06R

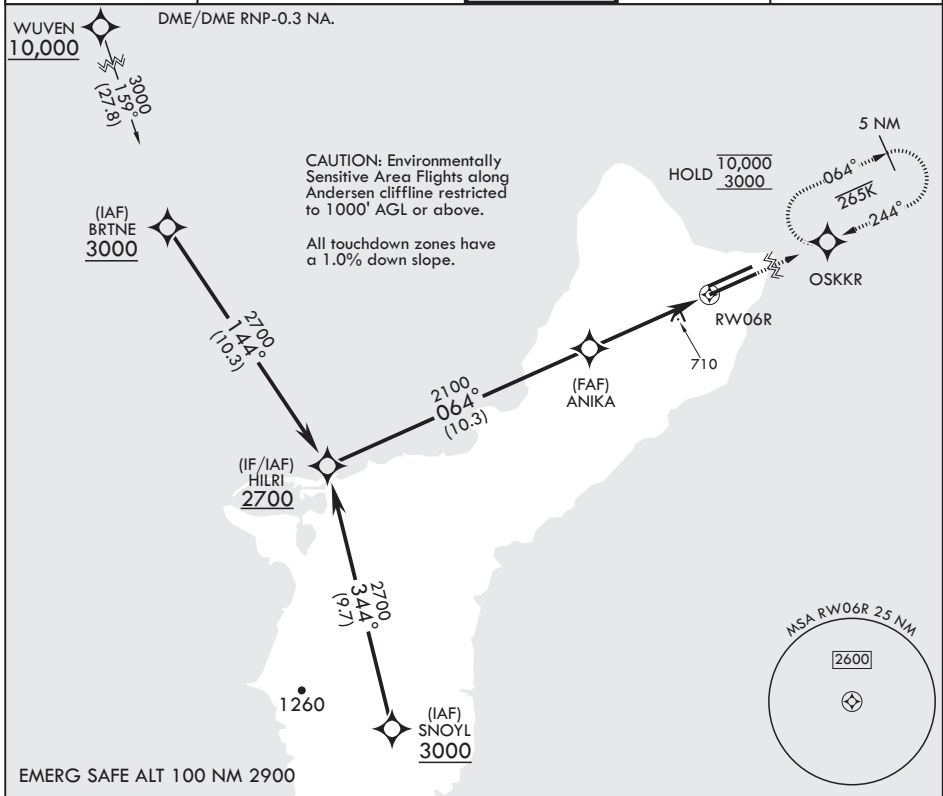
APCH CRS <b>064°</b>	Rwy Idg TDZE Arprt Elev <b>11,200</b> <b>557</b> <b>617</b>
-------------------------	--

AL-2147 (USAF)

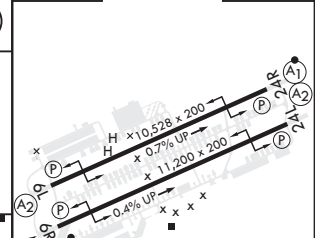
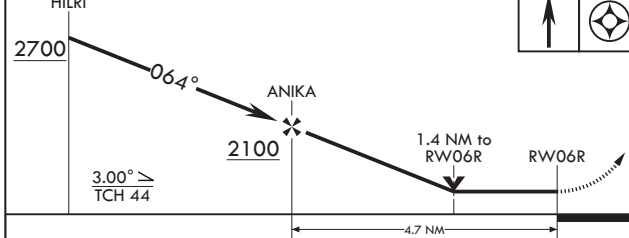
ANDERSEN AFB (PGUA)

RNP APCH	ALSF-1	MISSED APPROACH: Climb to 3000 direct OSKKR and hold.
<p>▼ * When ALS inop, increase CAT AB RVR to 55, vis to 1 mile; CAT CDE vis to 1 3/8 miles. ** Circling not authorized NW of Rwy 6L-24R.</p>		(A1)

ATIS <b>118.175 254.325</b>	GUAM APP CON/DEP CON <b>119.8 269.0</b>	TOWER <b>126.2 233.7</b>	GND CON <b>121.7 275.8</b>	CLNC DEL <b>126.725 256.7</b>
--------------------------------	--	-----------------------------	-------------------------------	----------------------------------



HILRI 2700	OSKKR ELEV 617	TDZE 557
------------	----------------	----------



CATEGORY	A	B	C	D	E
LNAY MDA*	1040/24 483 (500-½)	1040/50 483 (500-1)	1240-1¾ 623 (700-1¾)	1240-2 623 (700-2)	1240-2¼ 623 (700-2¼)
CIRCLING**	1060-1 443 (500-1)	1080-1 463 (500-1)			

YIGO, GUAM I, GUAM 13°35'N - 144°56'E ANDERSEN AFB (PGUA)

Amdt 1 17JUN21  
TERPS

# RNAV (GPS) RWY 06R

PAC, 25 JAN 2024 to 21 MAR 2024

PAC, 25 JAN 2024 to 21 MAR 2024

YIGO, GUAM I, GUAM

# TACAN Y RWY 24L

VORTAC UNZ <b>115.8</b> Chan <b>T05</b>	APCH CRS <b>236°</b>	Rwy ldg TDZE Arpt Elev	<b>11,200</b> <b>607</b> <b>617</b>
---	-------------------------	------------------------------	---

AL-2147 (USAF)

ANDERSEN AFB (PGUA)

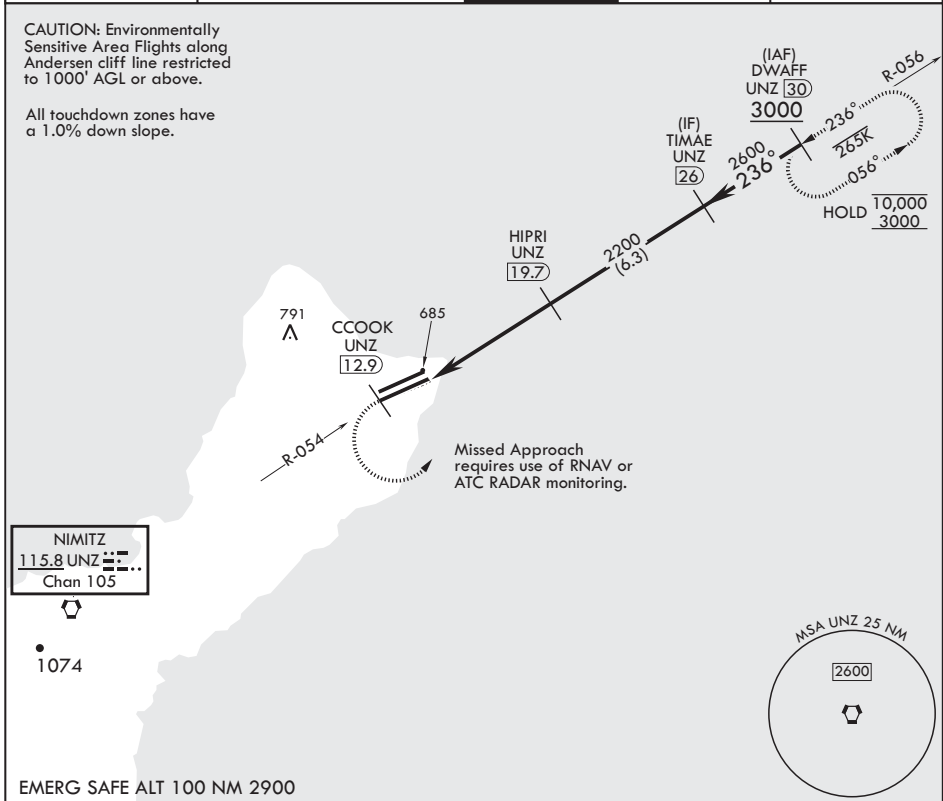
<p>⚠ * When ALS inop increase CAT AB RVR to 55, vis to 1 mile; CAT CDE RVR to 50, vis to 1 mile. ** Circling not authorized NW of Rwy 06L-24R.</p>	SALS	MISSED APPROACH: Climb to 3000 direct CCOOK, then climbing left turn to intercept UNZ R-056 to DWAFF and hold.
	(A2)	

ATIS <b>118.175 254.325</b>	GUAM APP CON/DEP CON <b>119.8 269.0</b>	TOWER <b>126.2 233.7</b>	GND CON <b>121.7 275.8</b>	CLNC DEL <b>126.725 256.7</b>
--------------------------------	--	-----------------------------	-------------------------------	----------------------------------

CAUTION: Environmentally Sensitive Area Flights along Andersen cliff line restricted to 1000' AGL or above.

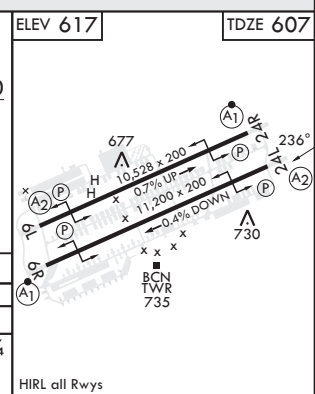
All touchdown zones have a 1.0% down slope.

PAC, 25 JAN 2024 to 21 MAR 2024



EMERG SAFE ALT 100 NM 2900

3000	CCOOK UNZ 12.9	UNZ R-056	DWAFF UNZ 30	DWAFF 30	ELEV 617	TDZE 607
VORTAC	WEVUS 14.8	15.6	HIPRI 19.7	TIMAE 26	236°	3000
			2200	2600	≤ 2.94° TCH 43	
	.1	4.9 NM				
CATEGORY	A	B	C	D	E	
S-24L*	940/40	333 (400-¾)	940/45	333	(400-⅞)	
CIRCLING**	1060-1 443 (500-1)	1080-1 463 (500-1)	1240-1¾ 623 (700-1¾)	1240-2 623 (700-2)	1240-2¼ 623 (700-2¼)	
	HIRL all Rwys					



PAC, 25 JAN 2024 to 21 MAR 2024

YIGO, GUAM I, GUAM

13°35'N - 144°56'E

ANDERSEN AFB (PGUA)

Amdt 2 17JUN21  
TERPS

# TACAN Y RWY 24L

YIGO, GUAM I, GUAM

# TACAN Y RWY 24R

VORTAC UNZ <b>115.8</b> Chan <b>T05</b>	APCH CRS <b>234°</b>	Rwy ldg TDZE Arprt Elev <b>10,528</b> <b>617</b> <b>617</b>
---	-------------------------	--

AL-2147 (USAF)

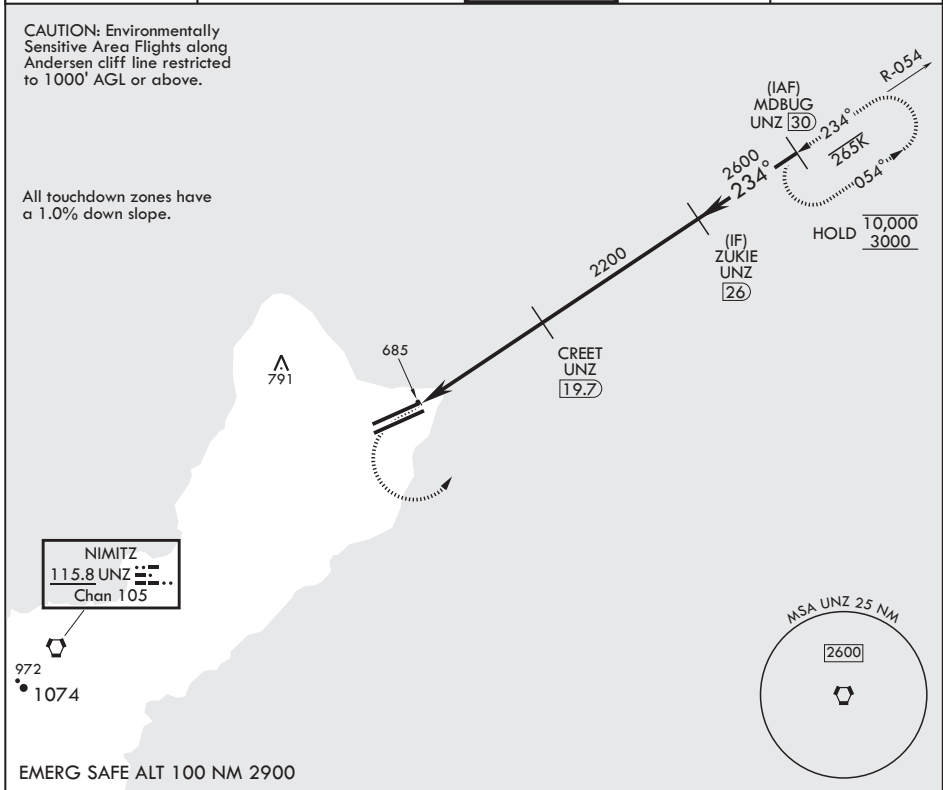
ANDERSEN AFB (PGUA)

RNAV or RADAR required for missed approach		ALS-F1	MISSED APPROACH: Climb to 1100, then climbing left turn to intercept UNZ R-054 to MDBUG and hold.
* When ALS inop increase CAT AB RVR to 55, vis to 1 mile; CAT CDE RVR to 50, vis to 1 mile. ** Circling not authorized NW of Rwy 06L-24R.			

ATIS <b>118.175 254.325</b>	GUAM APP CON/DEP CON <b>119.8 269.0</b>	TOWER <b>126.2 233.7</b>	GND CON <b>121.7 275.8</b>	CLNC DEL <b>126.725 256.7</b>
--------------------------------	--	-----------------------------	-------------------------------	----------------------------------

CAUTION: Environmentally Sensitive Area Flights along Andersen cliff line restricted to 1000' AGL or above.

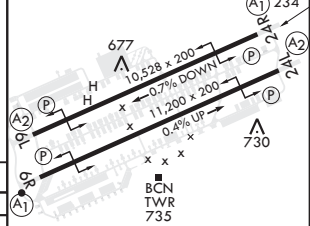
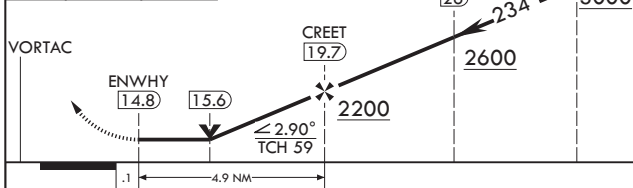
All touchdown zones have a 1.0% down slope.



PAC, 25 JAN 2024 to 21 MAR 2024

PAC, 25 JAN 2024 to 21 MAR 2024

1100	3000	MDBUG UNZ 30	ELEV 617	TDZE 617
		ZUKIE 26		



CATEGORY	A	B	C	D	E
S-24R*	940/24 323 (400-½)		940/40 323 (400-¾)		
CIRCLING**	1060-1 443 (500-1)	1080-1 463 (500-1)	1240-1¾ 623 (700-1¾)	1240-2 623 (700-2)	1240-2¼ 623 (700-2¼)

HIRL all Rwys

YIGO, GUAM I, GUAM

13°35'N - 144°56'E

ANDERSEN AFB (PGUA)

Amdt 3 10AUG23  
TERPS

# TACAN Y RWY 24R

YIGO, GUAM I, GUAM

# TACAN Y RWY 06L

VORTAC UNZ <b>115.8</b> Chan <b>105</b>	APCH CRS <b>053°</b>	Rwy ldg TDZE Arpt Elev	<b>10,528</b> <b>539</b> <b>617</b>
---	-------------------------	------------------------------	---

AL-2147 (USAF)

ANDERSEN AFB (PGUA)

**▽** \* When ALS inop, increase CAT AB RVR to 55 and vis to 1 mile, CAT CDE vis to 1 1/2 miles.  
\*\* Circling not authorized NW of Rwy 06L-24R.

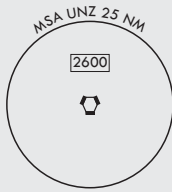
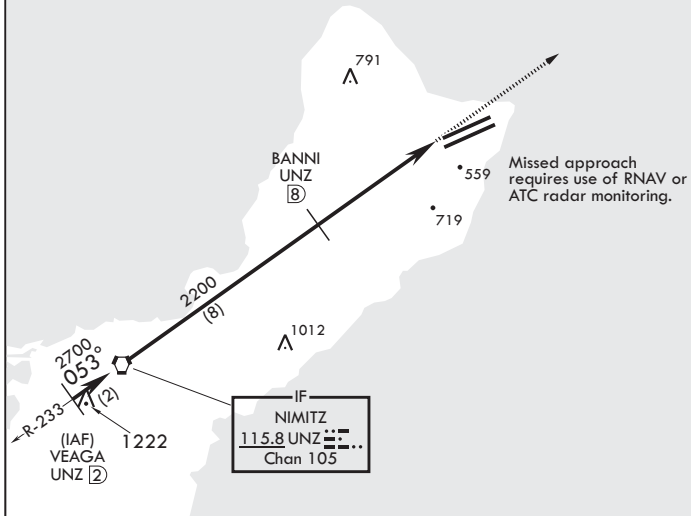
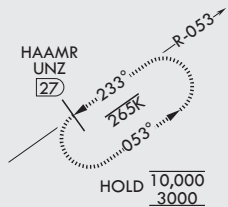


MISSED APPROACH: Climb to 3000, intercept UNZ R-053 to HAAMR and hold.

ATIS <b>118.175 254.325</b>	GUAM APP CON/DEP CON <b>119.8 269.0</b>	TOWER <b>126.2 233.7</b>	GND CON <b>121.7 275.8</b>	CLNC DEL <b>126.725 256.7</b>
--------------------------------	--	-----------------------------	-------------------------------	----------------------------------

CAUTION: Environmentally Sensitive Area Flights along Anderson cliff line restricted to 1000' AGL or above.

All touchdown zones have a 1.0% down slope.



EMERG SAFE ALT 100 NM 2900

VEAGA UNZ 2700	VORTAC 2700	BANNI UNZ 2200	FAYZR UNZ 12.8	3000 UNZ R-053	HAAMR UNZ 27	ELEV 617	TDZE 539
2700 — 053° —> 2700		2200		4.8 NM			
2.99° ≥ TCH 59							
CATEGORY	A	B	C	D	E		
S-6L*	1060/40 521 (500-¾)		1060-1¼ 521 (500-1¼)				
<b>☐</b> CIRCLING**	1060-1 443 (500-1)	1080-1 463 (500-1)	1240-1¾ 623 (700-1¾)	1240-2 623 (700-2)	1240-2¼ 623 (700-2¼)		

YIGO, GUAM I, GUAM

13°35'N - 144°56'E

ANDERSEN AFB (PGUA)

Amdt 3 10AUG23  
TERPS

# TACAN Y RWY 06L

PAC, 25 JAN 2024 to 21 MAR 2024

PAC, 25 JAN 2024 to 21 MAR 2024

YIGO, GUAM I, GUAM

# TACAN Y RWY 06R

VORTAC UNZ <b>115.8</b> Chan <b>T05</b>	APCH CRS <b>054°</b>	Rwy ldg TDZE Arpt Elev	<b>11,200</b> <b>557</b> <b>617</b>
---	-------------------------	------------------------------	---

AL-2147 (USAF)

ANDERSEN AFB (PGUA)

**⚠** \* When ALS inop, increase CAT AB RVR to 55, vis to 1 mile, CAT CDE vis to 1 3/8 miles.  
\*\* Circling not authorized NW of Rwy 6L-24R.

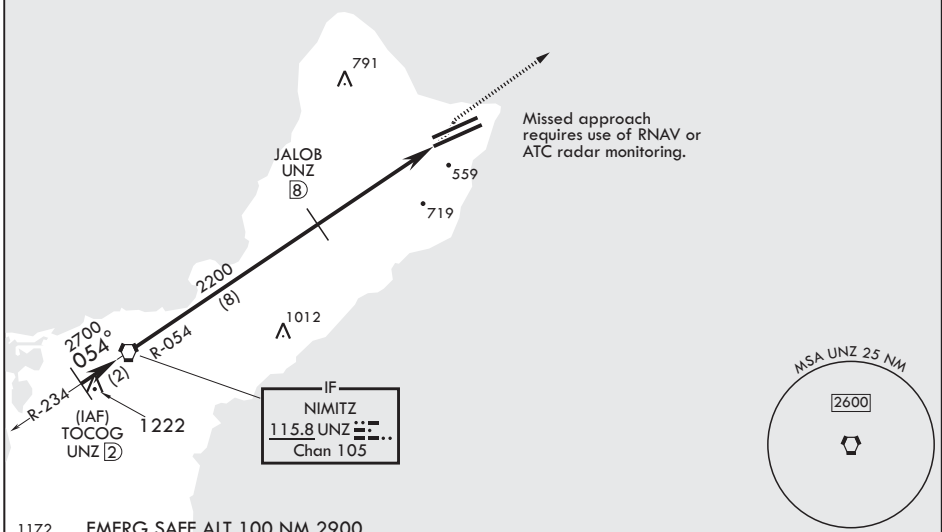
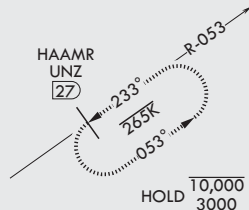


MISSED APPROACH: Climb to 3000, intercept UNZ R-053 to HAAMR and hold.

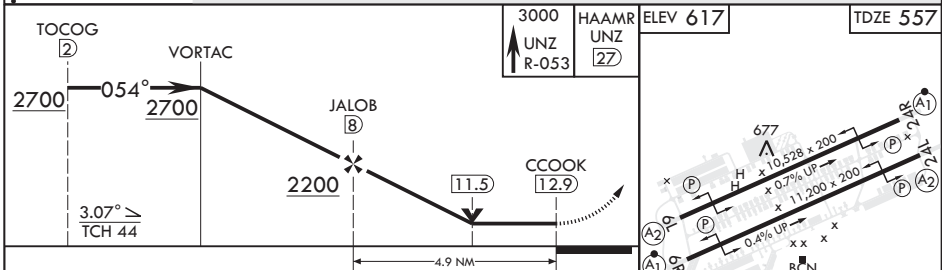
ATIS <b>118.175 254.325</b>	GUAM APP CON/DEP CON <b>119.8 269.0</b>	TOWER <b>126.2 233.7</b>	GND CON <b>121.7 275.8</b>	CLNC DEL <b>126.725 256.7</b>
--------------------------------	--	-----------------------------	-------------------------------	----------------------------------

CAUTION: Environmentally Sensitive Area Flights along Anderson cliff line restricted to 1000' AGL or above.

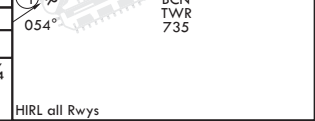
All touchdown zones have a 1.0% down slope.



1172 EMERG SAFE ALT 100 NM 2900



CATEGORY	A	B	C	D	E
S-6R*	1060/24	503 (500-½)	1060/55	503	(500-1)
<b>C</b> CIRCLING**	1060-1 443 (500-1)	1080-1 463 (500-1)	1240-1¼ 623 (700-1¼)	1240-2 623 (700-2)	1240-2¼ 623 (700-2¼)



YIGO, GUAM I, GUAM

13°35'N - 144°56'E

ANDERSEN AFB (PGUA)

Amdt 2 17JUN21  
TERPS

# TACAN Y RWY 06R

PAC, 25 JAN 2024 to 21 MAR 2024

PAC, 25 JAN 2024 to 21 MAR 2024

YIGO, GUAM I, GUAM

# TACAN Z RWY 24L

TACAN UAM Chan 54	APCH CRS 256°	Rwy Idg TDZE Arprt Elev	11,200 607 617
----------------------	------------------	----------------------------	----------------------

AL-2147 (USAF)

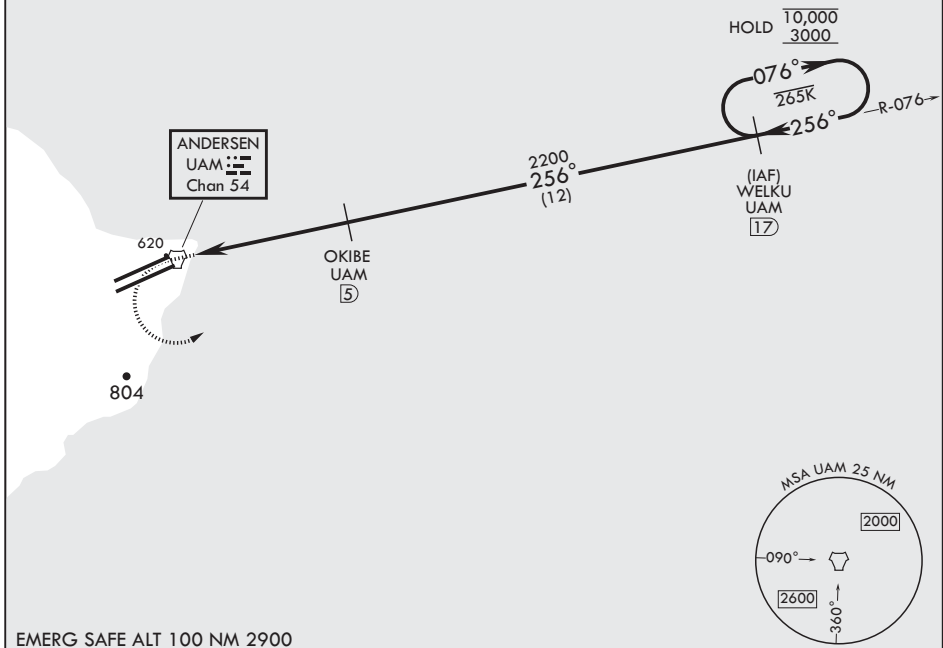
ANDERSEN AFB (PGUA)

RADAR or DME required.		SALS (A2)	MISSED APPROACH: Climb to 1100, then climbing left turn to 3000 to intercept UAM R-076 to WELKU and hold.
* When ALS inop, increase CAT AB RVR to 55, vis to 1 mile; CAT CDE RVR to 50, vis to 1 mile. ** Circling not authorized NW of Rwy 6L-24R.			

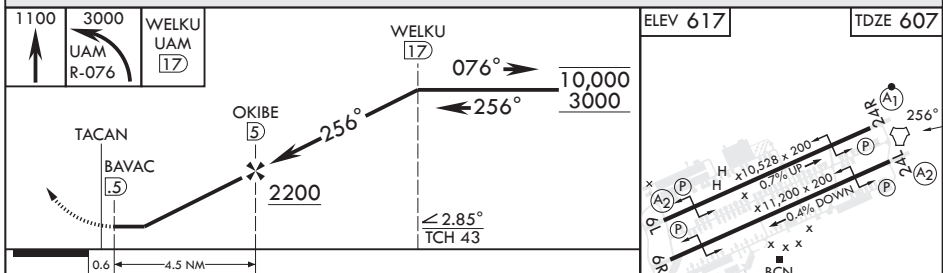
ATIS 118.175 254.325	GUAM APP CON/DEP CON 119.8 269.0	TOWER 126.2 233.7	GND CON 121.7 275.8	CLNC DEL 126.725 256.7
-------------------------	-------------------------------------	----------------------	------------------------	---------------------------

CAUTION: Environmentally Sensitive Area Flights along Andersen cliff line restricted to 1000' AGL or above.

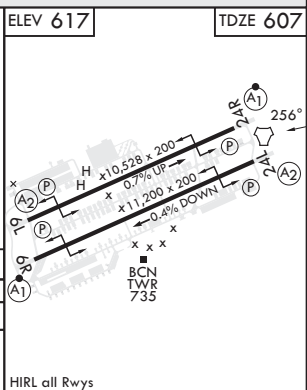
All touchdown zones have a 1.0% down slope.



EMERG SAFE ALT 100 NM 2900



CATEGORY	A	B	C	D	E
S-24L*	940/40 333 (400-¾)		940/45 333 (400-¾)		
CIRCLING**	1060-1 443 (500-1)	1080-1 463 (500-1)	1240-1¾ 623 (700-1¾)	1240-2 623 (700-2)	1240-2¼ 623 (700-2¼)



YIGO, GUAM I, GUAM

13°35'N - 144°56'E

ANDERSEN AFB (PGUA)

Amdt 2 17JUN21  
TERPS

# TACAN Z RWY 24L

PAC, 25 JAN 2024 to 21 MAR 2024

PAC, 25 JAN 2024 to 21 MAR 2024

YIGO, GUAM I, GUAM

# TACAN Z RWY 24R

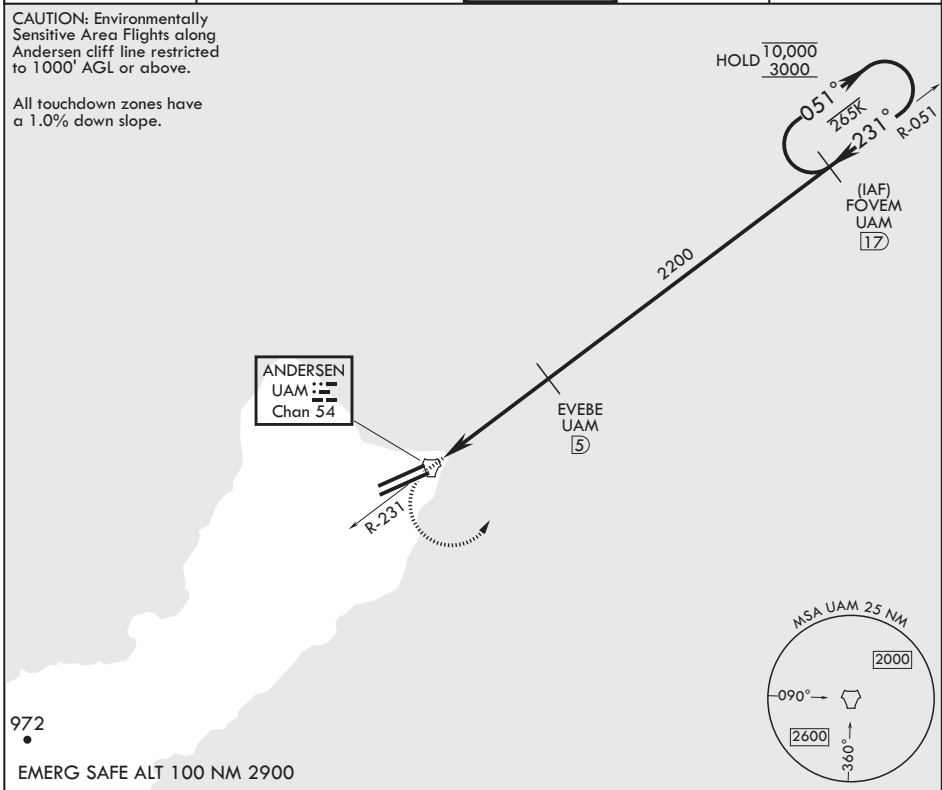
TACAN UAM Chan 54	APCH CRS 231°	Rwy Idg TDZE Arprt Elev	10,528 617 617
----------------------	------------------	-------------------------------	----------------------

AL-2147 (USAF)

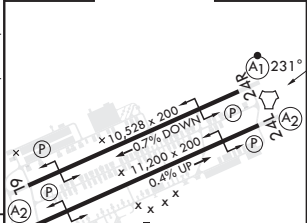
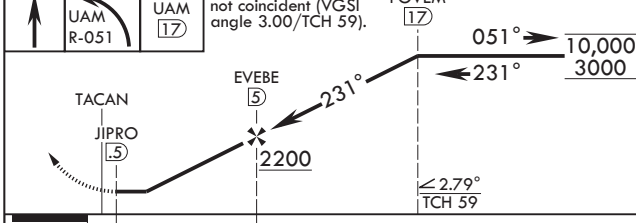
ANDERSEN AFB (PGUA)

RADAR or DME required.		ALSF-1	MISSED APPROACH: Climb to 1100, then climbing left turn to 3000 to intercept UAM R-051 to FOVEM and hold.
* When ALS inop, increase CAT AB RVR to 55, vis to 1 mile; CAT CDE RVR to 50, vis to 1 mile. ** Circling not authorized NW of Rwy 06L-24R.			

ATIS 118.175 254.325	GUAM APP CON/DEP CON 119.8 269.0	TOWER 126.2 233.7	GND CON 121.7 275.8	CLNC DEL 126.725 256.7
-------------------------	-------------------------------------	----------------------	------------------------	---------------------------



1100	3000	FOVEM UAM 17	VGSI and ILS glidepath not coincident (VGSI angle 3.00/TCH 59).	FOVEM 17	ELEV 617	TDZE 617
------	------	--------------	---	----------	----------	----------



CATEGORY	A	B	C	D	E
S-24R*	940/24 323 (400-½)		940/40 323 (400-¾)		
CIRCLING**	1060-1 443 (500-1)	1080-1 463 (500-1)	1240-1¾ 623 (700-1¾)	1240-2 623 (700-2)	1240-2¼ 623 (700-2¼)

HIRL all Rwys

YIGO, GUAM I, GUAM

13°35'N - 144°56'E

ANDERSEN AFB (PGUA)

Amdt 2 17JUN21  
TERPS

# TACAN Z RWY 24R

PAC, 25 JAN 2024 to 21 MAR 2024

PAC, 25 JAN 2024 to 21 MAR 2024



YIGO, GUAM I, GUAM

# TACAN Z RWY 06L

TACAN UAM Chan 54	APCH CRS 065°	Rwy Idg TDZE Arprt Elev	10,528 539 617
----------------------	------------------	-------------------------------	----------------------

-(USAF)

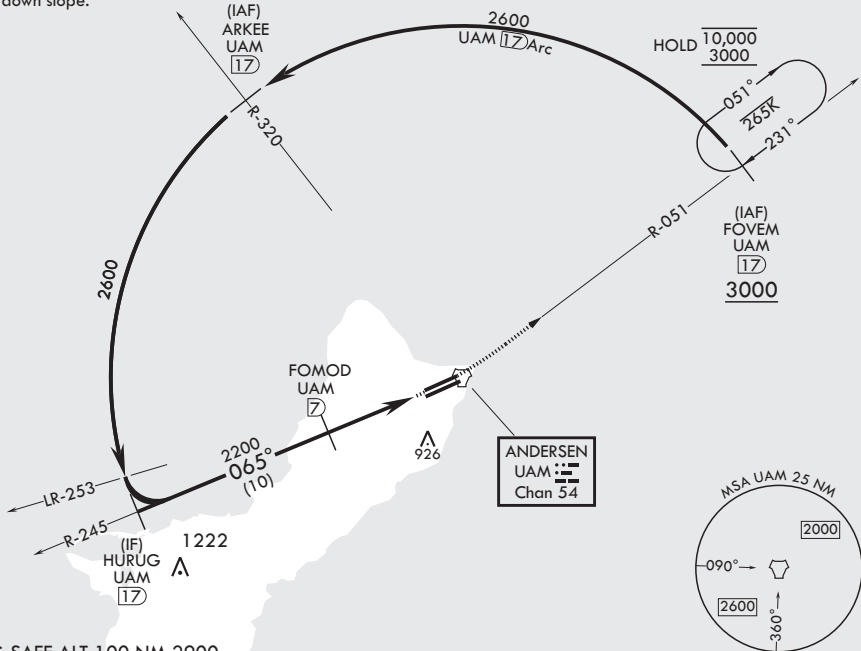
ANDERSEN AFB (PGUA)

RADAR or DME required.	SALS	MISSED APPROACH: Climb to 3000, intercept UAM R-051 to FOVEM and hold.
<b>▼</b> * When ALS inop, increase CAT AB RVR to 55, vis to 1 mile, CAT CDE vis 1 3/8 miles. ** Circling not authorized NW of Rwy 06L-24R.		

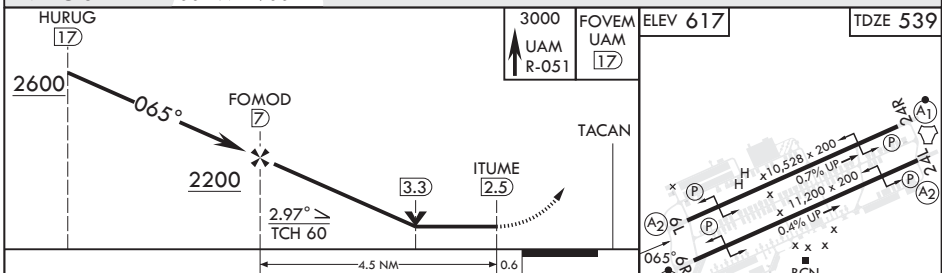
ATIS 118.175 254.325	GUAM APP CON/DEP CON 119.8 269.0	TOWER 126.2 233.7	GND CON 121.7 275.8	CLNC DEL 126.725 256.7
-------------------------	-------------------------------------	----------------------	------------------------	---------------------------

CAUTION: Environmentally Sensitive Area. Flights along Andersen cliffline restricted to 1000' AGL or above

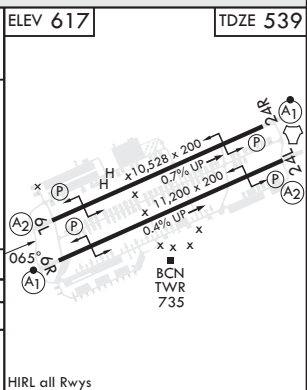
All touchdown zones have a 1.0% down slope.



EMERG SAFE ALT 100 NM 2900



CATEGORY	A	B	C	D	E
S-6L*	1040/40 501 (500-¾)		1040-1¼ 501 (500-1¼)		
<b>C</b> CIRCLING**	1060-1 443 (500-1)	1080-1 463 (500-1)	1240-1¾ 623 (700-1¾)	1240-2 623 (700-2)	1240-2¼ 623 (700-2¼)



YIGO, GUAM I, GUAM

13°35'N - 144°56'E

ANDERSEN AFB (PGUA)

Amdt 3 30NOV23  
TERPS

# TACAN Z RWY 06L

PAC, 25 JAN 2024 to 21 MAR 2024

PAC, 25 JAN 2024 to 21 MAR 2024

YIGO, GUAM I, GUAM

# TACAN Z RWY 06R

TACAN UAM Chan 54	APCH CRS 060°	Rwy Idg TDZE Arprt Elev	11,200 557 617
----------------------	------------------	-------------------------------	----------------------

AL-2147 (USAF)

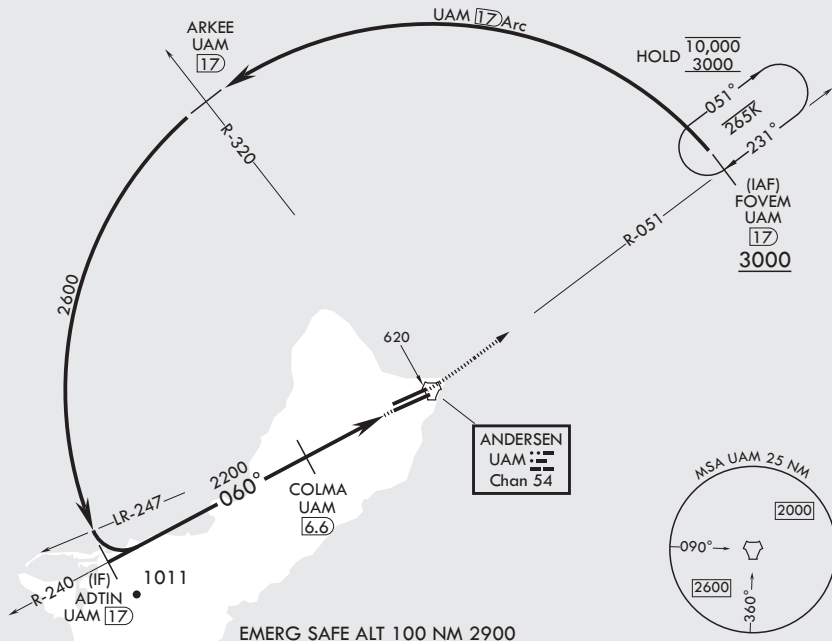
ANDERSEN AFB (PGUA)

RADAR or DME required.		ALSIF-1	MISSED APPROACH: Climb to 3000, intercept UAM R-051 to FOVEM and hold.	
* When ALS inop, increase CAT AB RVR to 55, vis to 1 mile, CAT CDE vis to 1 3/8 miles. ** Circling not authorized NW of Rwy 06L-24R.				

ATIS 118.175 254.325	GUAM APP CON/DEP CON 119.8 269.0	TOWER 126.2 233.7	GND CON 121.7 275.8	CLNC DEL 126.725 256.7
-------------------------	-------------------------------------	----------------------	------------------------	---------------------------

CAUTION: Environmentally sensitive area flights along Andersen cliff line restricted to 1000' AGL or above.

All touchdown zones have a 1.0% down slope.



EMERG SAFE ALT 100 NM 2900

ADTIN 17	VGS1 and descent angles not coincident (VGS1 angle 3.00/TCH 44).		3000 UAM R-051	FOVEM UAM 17	ELEV 617	TDZE 557
2600	060°	COLMA 6.6	2200	3.4	FAXEL 2.5	TACAN
3.28° ≥ TCH 43		4.1 NM		.5		
CATEGORY	A	B	C	D	E	
S-6R*	1040/24 483 (500-½)		1040/50 483 (500-1)			
CIRCLING**	1060-1 443 (500-1)	1080-1 463 (500-1)	1240-1¼ 623 (700-1¼)	1240-2 623 (700-2)	1240-2¼ 623 (700-2¼)	

YIGO, GUAM I, GUAM

13°35'N - 144°56'E

ANDERSEN AFB (PGUA)

Amdt 2 17JUN21  
TERPS

# TACAN Z RWY 06R

PAC, 25 JAN 2024 to 21 MAR 2024

PAC, 25 JAN 2024 to 21 MAR 2024