

LOC/DME I-RGL 108.5 Chan 22	APP CRS 093°	Rwy Idg TDZE Apt Elev N/A N/A 44
---	------------------------	--

LDA-C

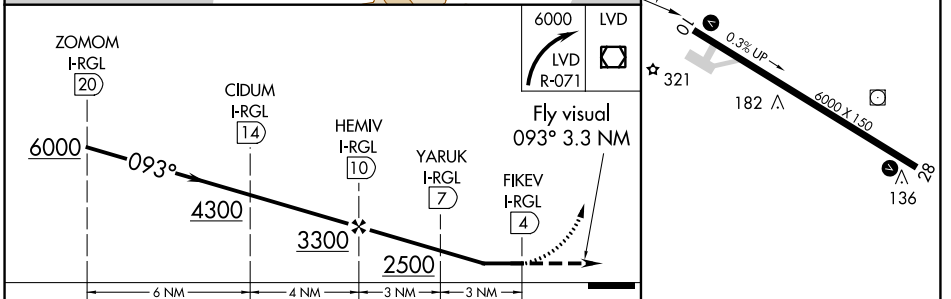
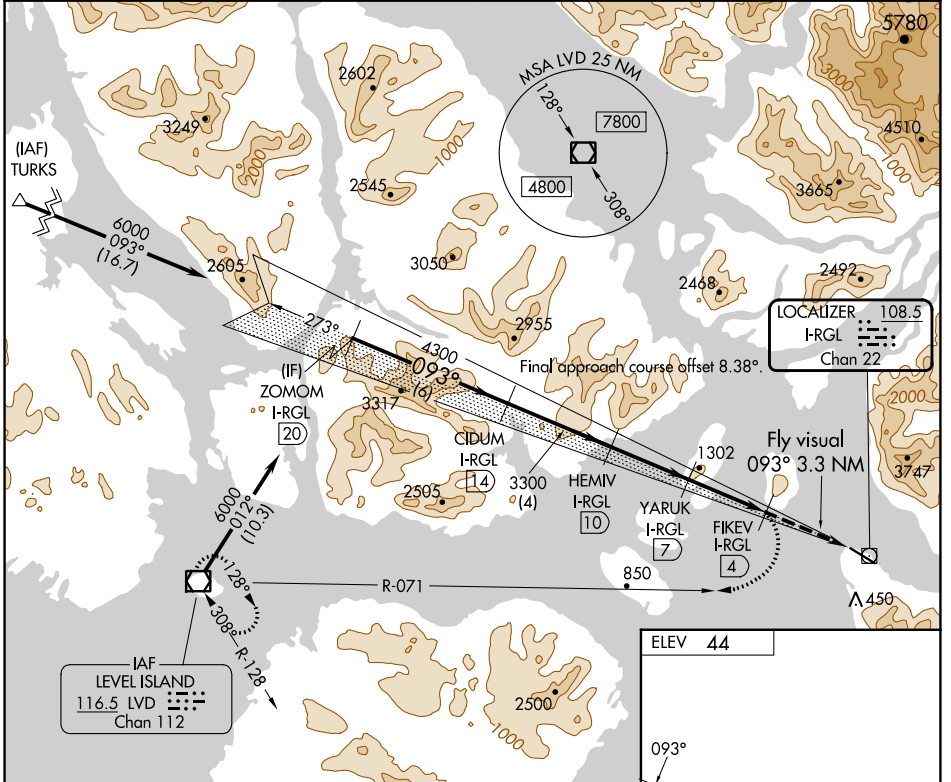
WRANGELL (WRG) (PAWG)

⚠ Circling NA south of Rwy 10-28. DME required. Any go-around commenced after passing the MAP will not provide standard obstacle clearance.

⚠ -5°C

MISSED APPROACH: Immediate climbing right turn to 6000 on LVD VOR/DME R-071 to LVD VOR/DME and hold.

AWOS-3P 128.5	ANCHORAGE CENTER 118.0	SITKA RADIO 122.45	CTAF 122.6
-------------------------	----------------------------------	------------------------------	----------------------



CATEGORY	A	B	C	D
C CIRCLING	1560-3 1516 (1600-3)		2460-3 2416 (2500-3)	NA

REIL Rwys 10 and 28
HIRL Rwy 10-28

AK, 25 JAN 2024 to 21 MAR 2024

AK, 25 JAN 2024 to 21 MAR 2024

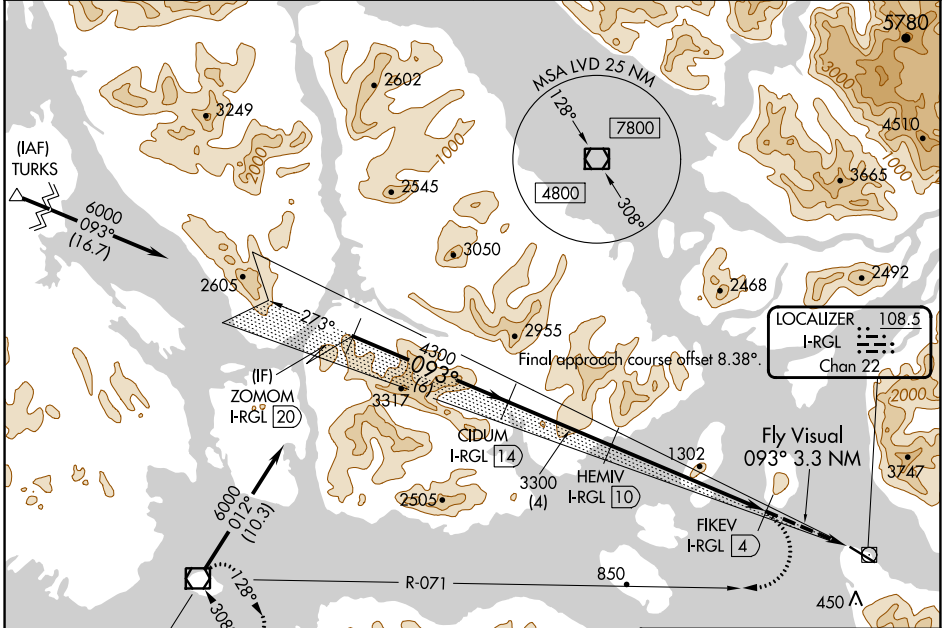
LOC/DME I-RGL 108.5 Chan 22	APP CRS 093°	Rwy Idg TDZE Apt Elev N/A N/A 44
---	------------------------	--

LDA-D

WRANGELL (WRG) (PAWG)

<p>Circling NA north of Rwy 10-28. DME Required. Any go-around commenced after passing the MAP will not provide standard obstacle clearance.</p> <p>-5°C</p>	<p>MISSED APPROACH: Climbing right turn to 6000 on LVD VOR/DME R-071 to LVD VOR/DME and hold.</p>
--	---

AWOS-3P 128.5	ANCHORAGE CENTER 118.0	SITKA RADIO 122.45	CTAF 122.6
-------------------------	----------------------------------	------------------------------	----------------------

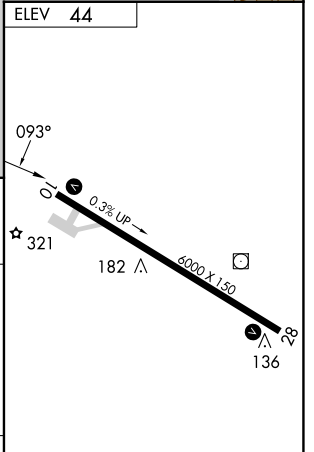


AK, 25 JAN 2024 to 21 MAR 2024

AK, 25 JAN 2024 to 21 MAR 2024



ZOMOM I-RGL 20	CIDUM I-RGL 14	HEMIV I-RGL 10	FIKEV I-RGL 4	Fly Visual 093° 3.3 NM
6000	4300	3300		
6 NM	4 NM	6 NM		



CATEGORY	A	B	C	D
CIRCLING		NA		3260-3 3216 (3300-3)

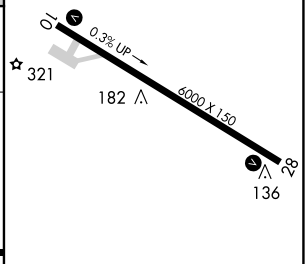
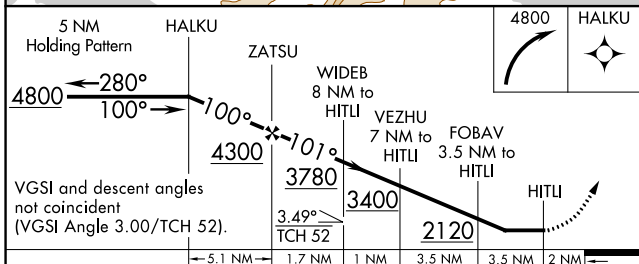
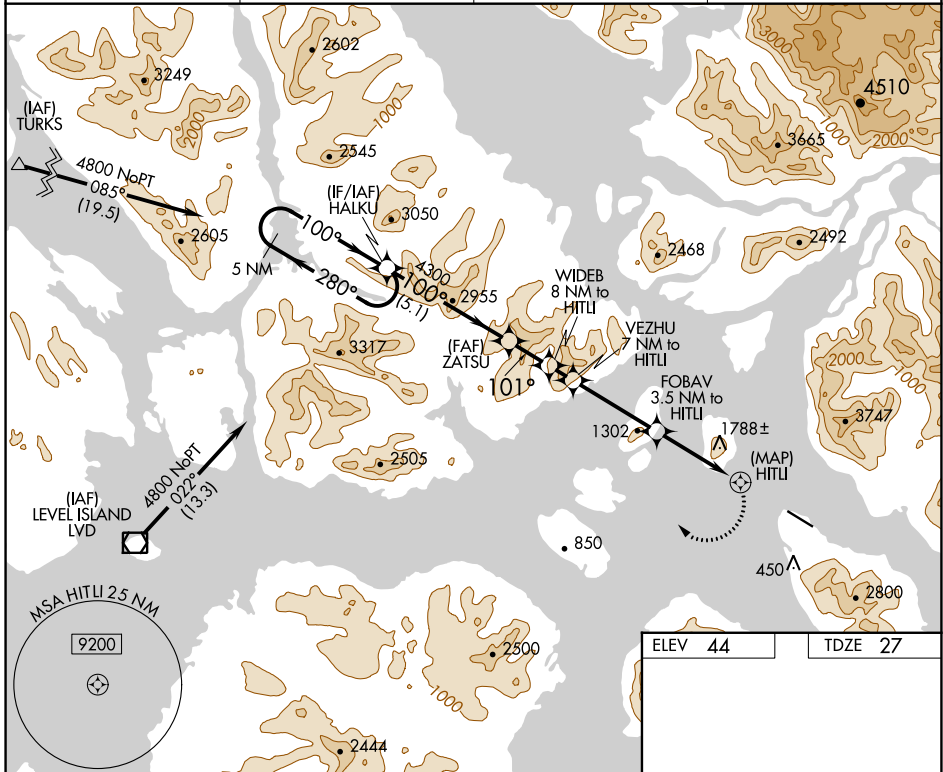
REIL Rwys 10 and 28
HIRL Rwy 10-28

APP CRS	Rwy Idg	6000
101°	TDZE	27
	Apt Elev	44

RNAV (GPS) RWY 10

WRANGELL (WRG) (PAWG)

RNP APCH-GPS		MISSED APPROACH: Climbing right turn to 4800 direct HALKU and hold.	
⚠ Circling NA South of Rwy 10-28. ⚠ Procedure NA at night. 🌡 -5°C Helicopter visibility reduction below 1 SM NA.		AWOS-3P 128.5	ANCHORAGE CENTER 118.0
		SITKA RADIO 122.45	CTAF 122.6



CATEGORY	A	B	C	D
LNVA MDA	2080-2½ 2053 (2100-2½)	2080-3 2053 (2100-3)	2080-3 2053 (2100-3)	NA
CIRCLING	2080-2½ 2036 (2100-2½)	2500-3 2456 (2500-3)	2500-3 2456 (2500-3)	NA

REIL Rwys 10 and 28
 HIRL Rwy 10-28

AK, 25 JAN 2024 to 21 MAR 2024

AK, 25 JAN 2024 to 21 MAR 2024