

APP CRS	Rwy Idg	3000
122°	TDZE	13
	Apt Elev	18

RNAV (GPS) RWY 12

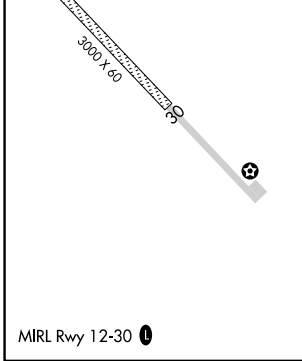
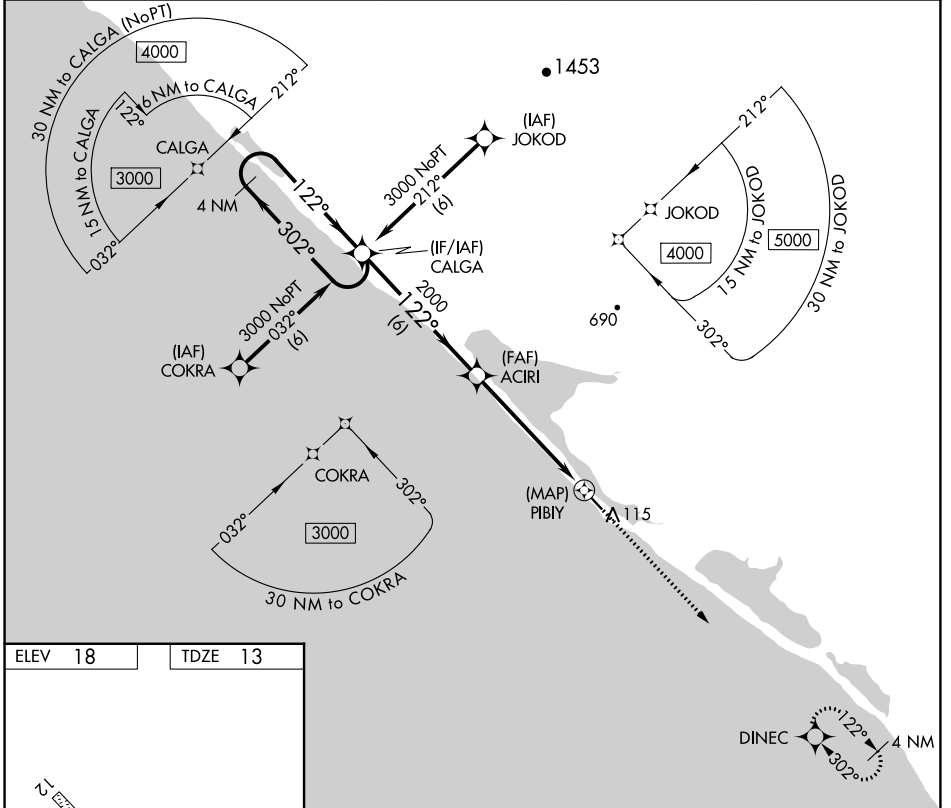
KIVALINA (KVL)(PAVL)

V DME/DME RNP-0.3 NA. When local altimeter setting not received, use Noatak altimeter setting and increase all MDAs 340 feet and LNAV Cat C visibility 1 SM and Circling Cat B visibility ¼ SM, Cat C 1 ¼ SM.

A -34°C

MISSED APPROACH: Climb to 3000 direct DINEC and hold.

ASOS	WTK/PAWN AWOS-3P	ANCHORAGE CENTER	KOTZEBUE RADIO	UNICOM
135.8	135.75	119.2 263.0	122.55	122.8 (CTAF) 0



4 NM Holding Pattern	CALGA	3000	DINEC	
3000	← 302°	→ 122°	↑	
	122°	122°	✧	
		ACIRI	PIBIY	
		2000	3.06° TCH 40	
	6 NM	5.6 NM	0.4	
CATEGORY	A	B	C	D
LNAV MDA	340-1 327 (400-1)			NA
CIRCLING	440-1 422 (500-1)	560-1 542 (600-1)	560-1½ 542 (600-1½)	NA

AK, 25 JAN 2024 to 21 MAR 2024

AK, 25 JAN 2024 to 21 MAR 2024

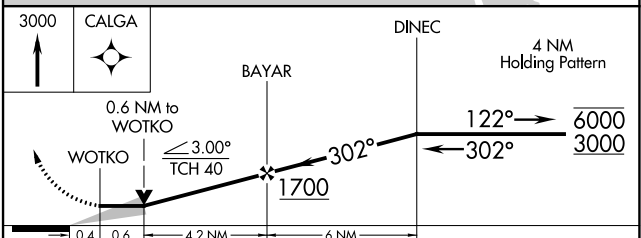
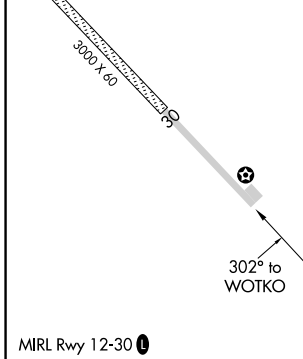
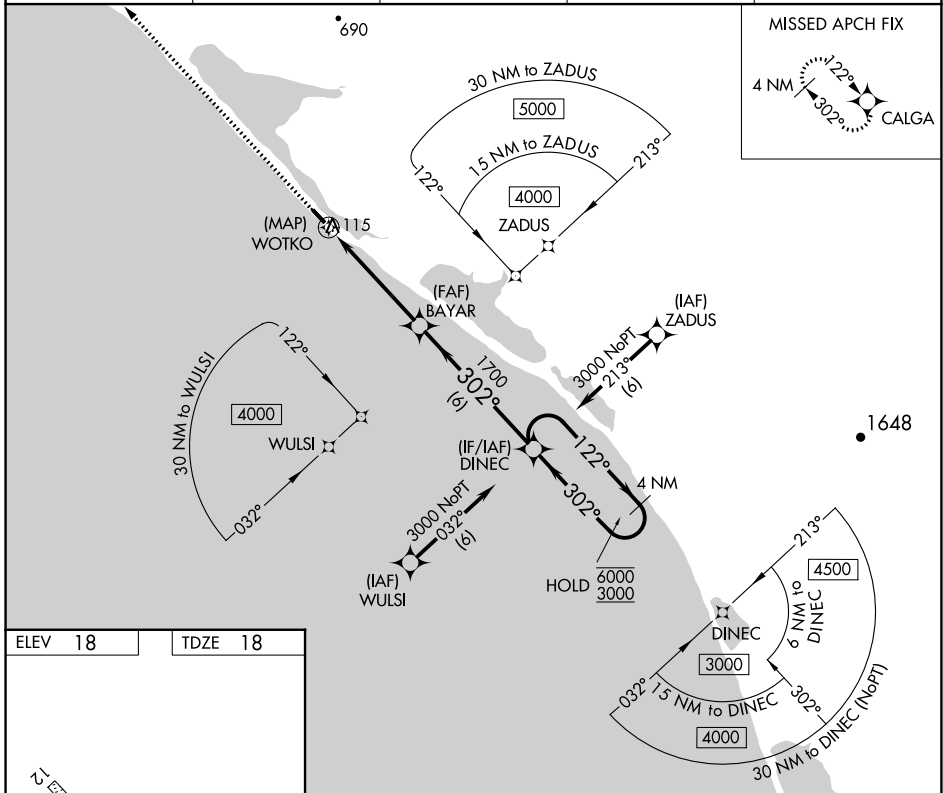
APP CRS	Rwy Idg	3000
302°	TDZE	18
	Apt Elev	18

RNAV (GPS) RWY 30

KIVALINA (KVL)(PAVL)

RNP APCH - GPS		<p>VDP NA with Noatak altimeter setting. When local altimeter setting not received, use Noatak altimeter setting and increase all MDAs 340 feet and visibility LNAV Cat C 1 SM, Circling Cat B ½ SM, and Circling Cat C 1 ¼ SM.</p>		<p>MISSED APPROACH: Climb to 3000 direct CALGA and hold, continue climb-in-hold to 3000.</p>	
----------------	--	---	--	--	--

ASOS	WTK/PAWN AWOS-3P	ANCHORAGE CENTER	KOTZEBUE RADIO	UNICOM
135.8	135.75	119.2 263.0	122.55	122.8 (CTAF)



CATEGORY	A	B	C	D
LNAV MDA	380-1 362 (400-1)			NA
CIRCLING	440-1 422 (500-1)	560-1 542 (600-1)	560-1½ 542 (600-1½)	NA

AK, 25 JAN 2024 to 21 MAR 2024

AK, 25 JAN 2024 to 21 MAR 2024