

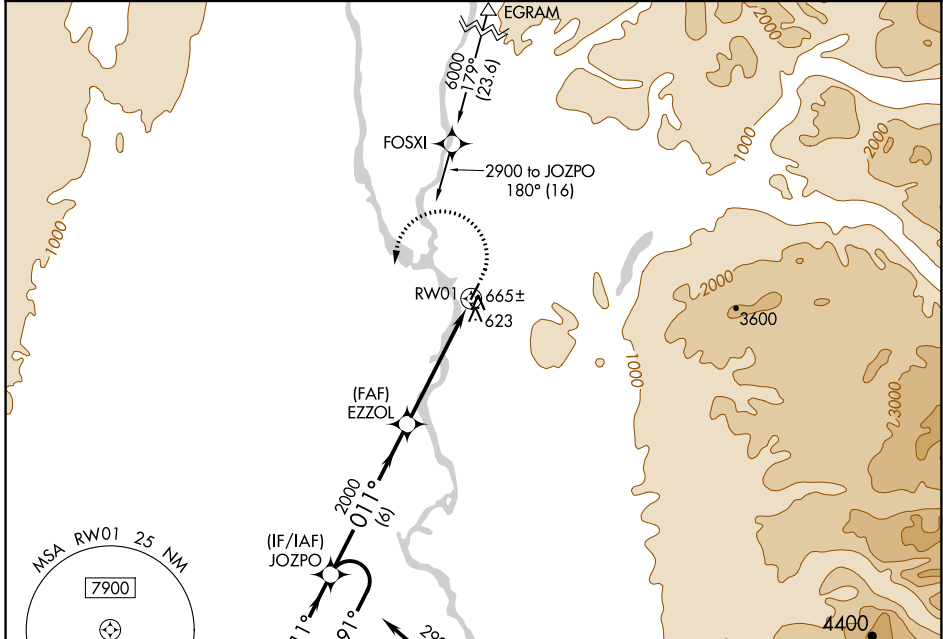
APP CRS	Rwy Idg	3500
011°	TDZE	363
	Apt Elev	365

RNAV (GPS) RWY 1

TALKEETNA(TKA)(PATK)

RNP APCH.	<p>⚠ Circling NA east of Rwy 1-19. Rwy 1 helicopter visibility reduction below ¾ SM NA. For uncompensated Baro-VNAV systems, LNAV/VNAV NA below -20°C or above 54°C.</p> <p>❄ -29°C</p>	<p>MISSED APPROACH: Climb to 800 then climbing left turn to 2900 direct JOZPO and hold.</p>
-----------	---	---

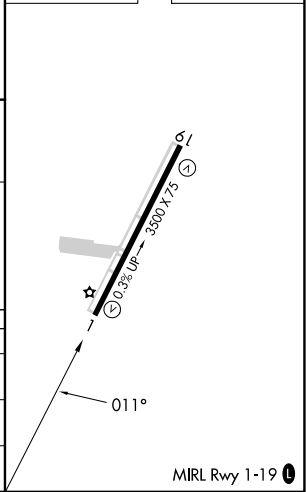
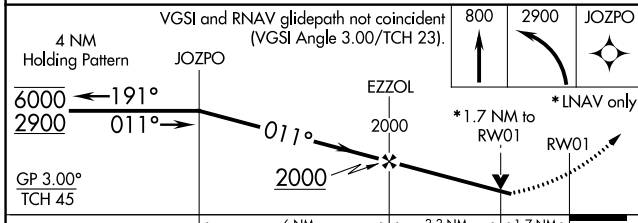
AFIS 135.2	ANCHORAGE CENTER 125.55 254.3	TALKEETNA RADIO 123.6 (CTAF) 0	UNICOM 123.0
----------------------	---	--	------------------------



AK, 25 JAN 2024 to 21 MAR 2024

AK, 25 JAN 2024 to 21 MAR 2024

ELEV 365	TDZE 363
----------	----------



CATEGORY	A	B	C	D
LNAV/VNAV DA	922-2 559 (600-2)			
LNAV MDA	920-1 557 (600-1)	920-1½ 557 (600-1½)		
CIRCLING	960-1 595 (600-1)	1040-2 675 (700-2)	1200-2¾ 835 (900-2¾)	

APP CRS	Rwy Idg	3500
171°	TDZE	365
	Apt Elev	365

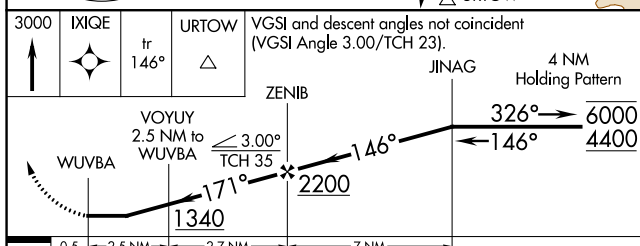
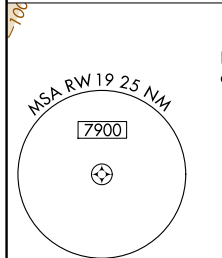
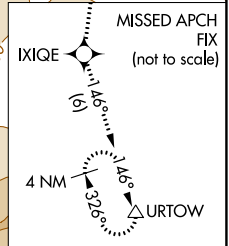
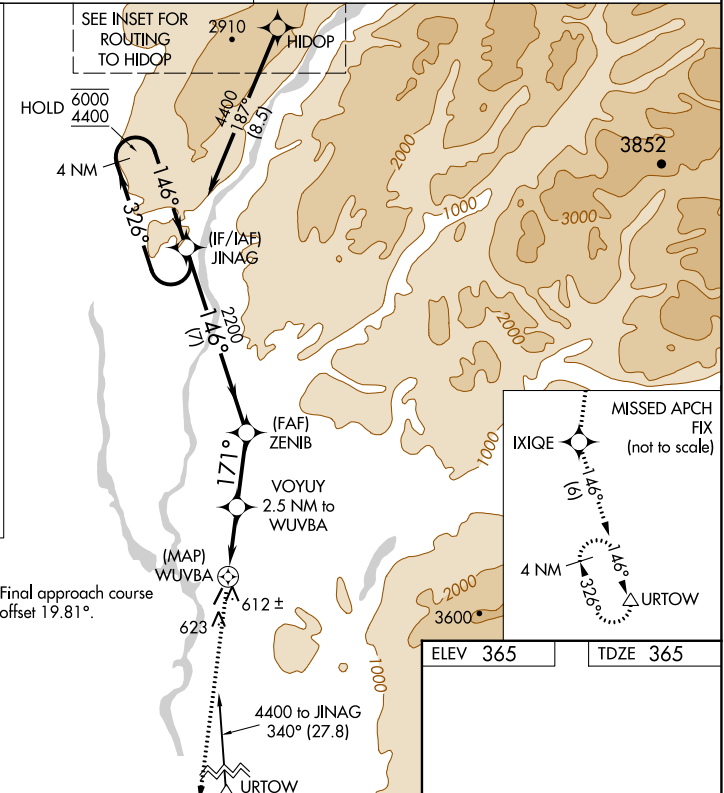
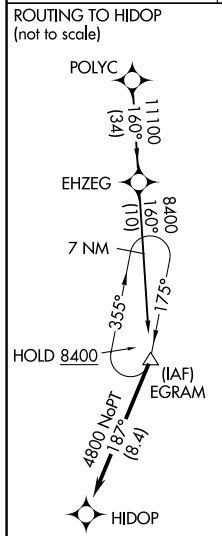
RNAV (GPS) RWY 19

TALKEETNA(TKA)(PATK)

RNP APCH.
 ⚠ Circling NA east of Rwy 1-19. Rwy 19 helicopter visibility reduction below 1 SM NA. Straight-in Rwy 19 NA at night, Circling Rwy 19 NA at night.
 ❄ -29°C

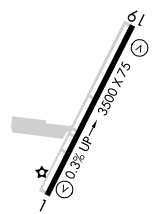
MISSED APPROACH: Climb to 3000 direct IXIQE and on track 146° to URTOW and hold.

AFIS 135.2	ANCHORAGE CENTER 125.55 254.3	TALKEETNA RADIO 123.6 (CTAF) 0	UNICOM 123.0
----------------------	---	--	------------------------



ELEV 365	TDZE 365
----------	----------

CATEGORY	A	B	C	D
LNAV MDA	880-1	515 (600-1)	880-1 $\frac{3}{8}$	515 (600-1 $\frac{3}{8}$)
CIRCLING	880-1	515 (600-1)	1040-2 675 (700-2)	1200-2 $\frac{3}{4}$ 835 (900-2 $\frac{3}{4}$)



MIRL Rwy 1-19 0

AK, 25 JAN 2024 to 21 MAR 2024

AK, 25 JAN 2024 to 21 MAR 2024

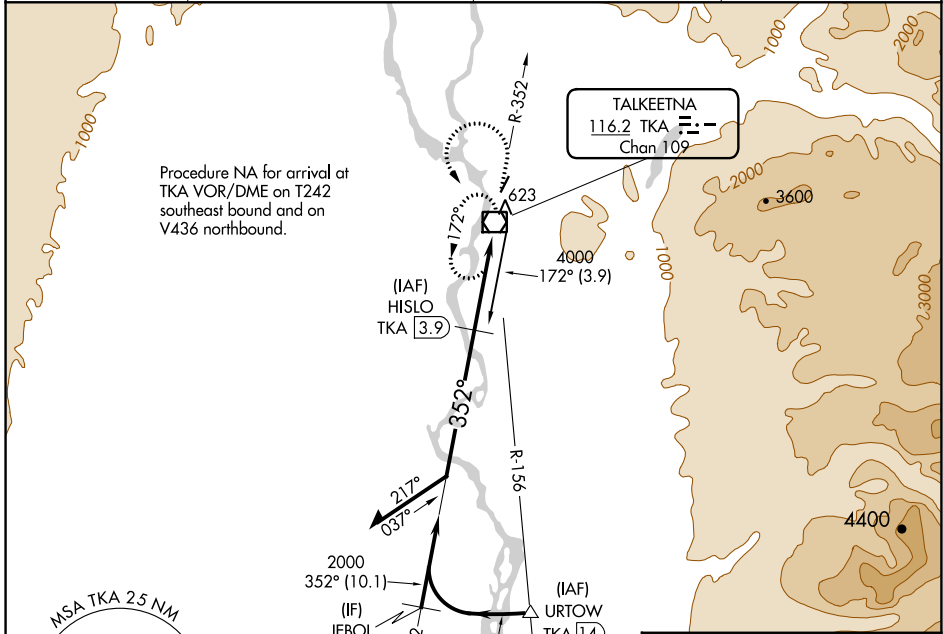
VOR/DME TKA 116.2 Chan 109	APP CRS 352°	Rwy ldg TDZE Apt Elev 3500 363 365
--	------------------------	--

VOR RWY 1

TALKEETNA (TKA)(PATK)

DME required.	MISSED APPROACH: Climb to 2100 on TKA VOR/DME R-352 then climbing left turn to 3200 direct TKA VOR/DME and hold.
<p>▼ Circling NA east of Rwy 1-19.</p> <p>⚠ Rwy 1 helicopter visibility reduction below 1 SM NA.</p> <p>❄ -29°C Straight-in Rwy 1 NA at night, Circling Rwy 1 NA at night.</p>	

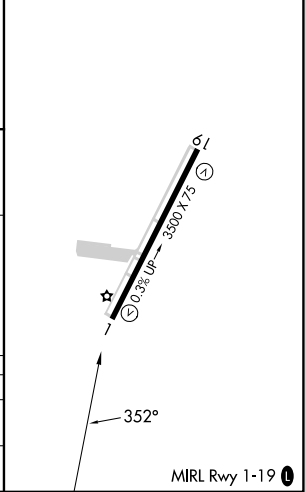
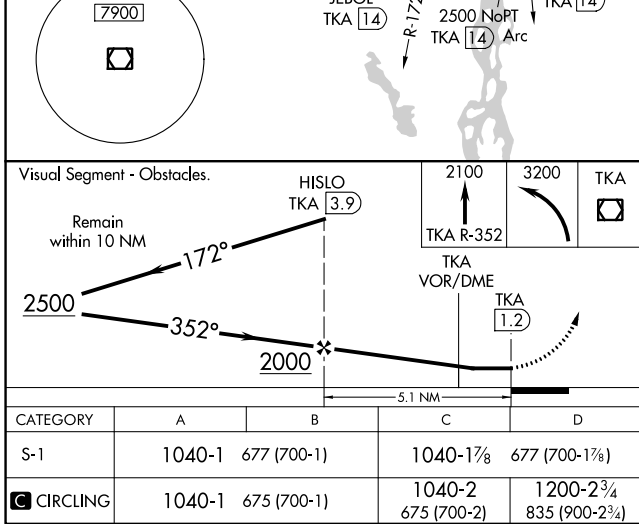
AFIS 135.2	ANCHORAGE CENTER 125.55 254.3	TALKEETNA RADIO 123.6 (CTAF) 0	UNICOM 123.0
----------------------	---	--	------------------------



AK, 25 JAN 2024 to 21 MAR 2024

AK, 25 JAN 2024 to 21 MAR 2024

ELEV 365	TDZE 363
----------	----------

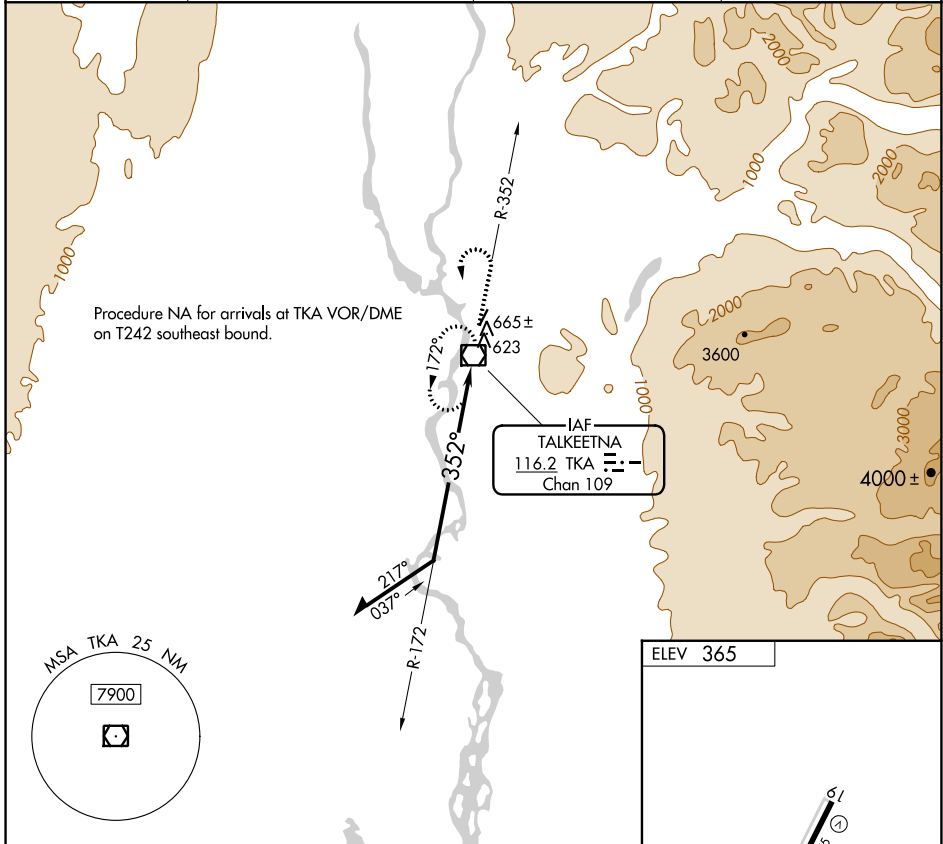


VOR/DME TKA 116.2 Chan 109	APP CRS 352°	Rwy Idg TDZE Apt Elev N/A N/A 365
--	------------------------	--

VOR-A
TALKEETNA (TKA)(PATK)

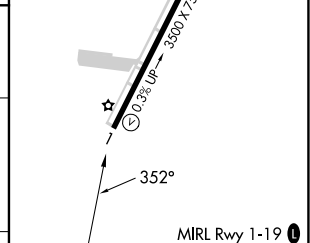
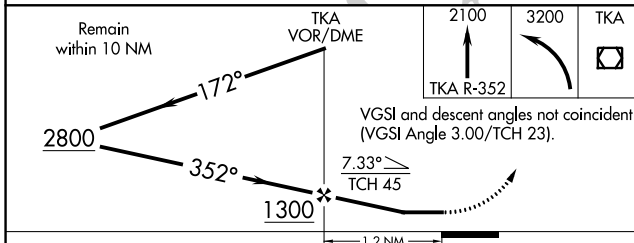
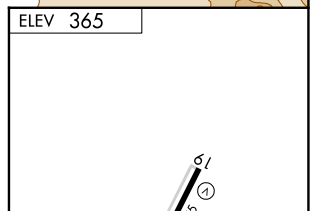
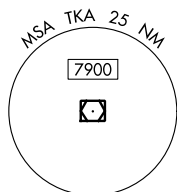
<p>▼ Circling NA east of Rwy 1-19. ▲ Rwy 1 helicopter visibility reduction below 1 SM NA. ☃ -29°C Circling Rwy 1 NA at night.</p>	<p>MISSED APPROACH: Climb to 2100 on TKA VOR/DME R-352 then climbing left turn to 3200 direct TKA VOR/DME and hold.</p>
--	---

AFIS 135.2	ANCHORAGE CENTER 125.55 254.3	TALKEETNA RADIO 123.6 (CTAF) 0	UNICOM 123.0
----------------------	---	--	------------------------



AK, 25 JAN 2024 to 21 MAR 2024

AK, 25 JAN 2024 to 21 MAR 2024



CATEGORY	FAF to MAP 1.2 NM			
	A	B	C	D
☐ CIRCLING	1080-1	715 (800-1)	1080-2 715 (800-2)	1200-2 ³ / ₄ 835 (900-2 ³ / ₄)
	Knots	60	90	120 150 180
	Min:Sec	1:12	0:48	0:36 0:29 0:24