

19115  
**AIRPORT DIAGRAM**

AFD-1246 [USAF]

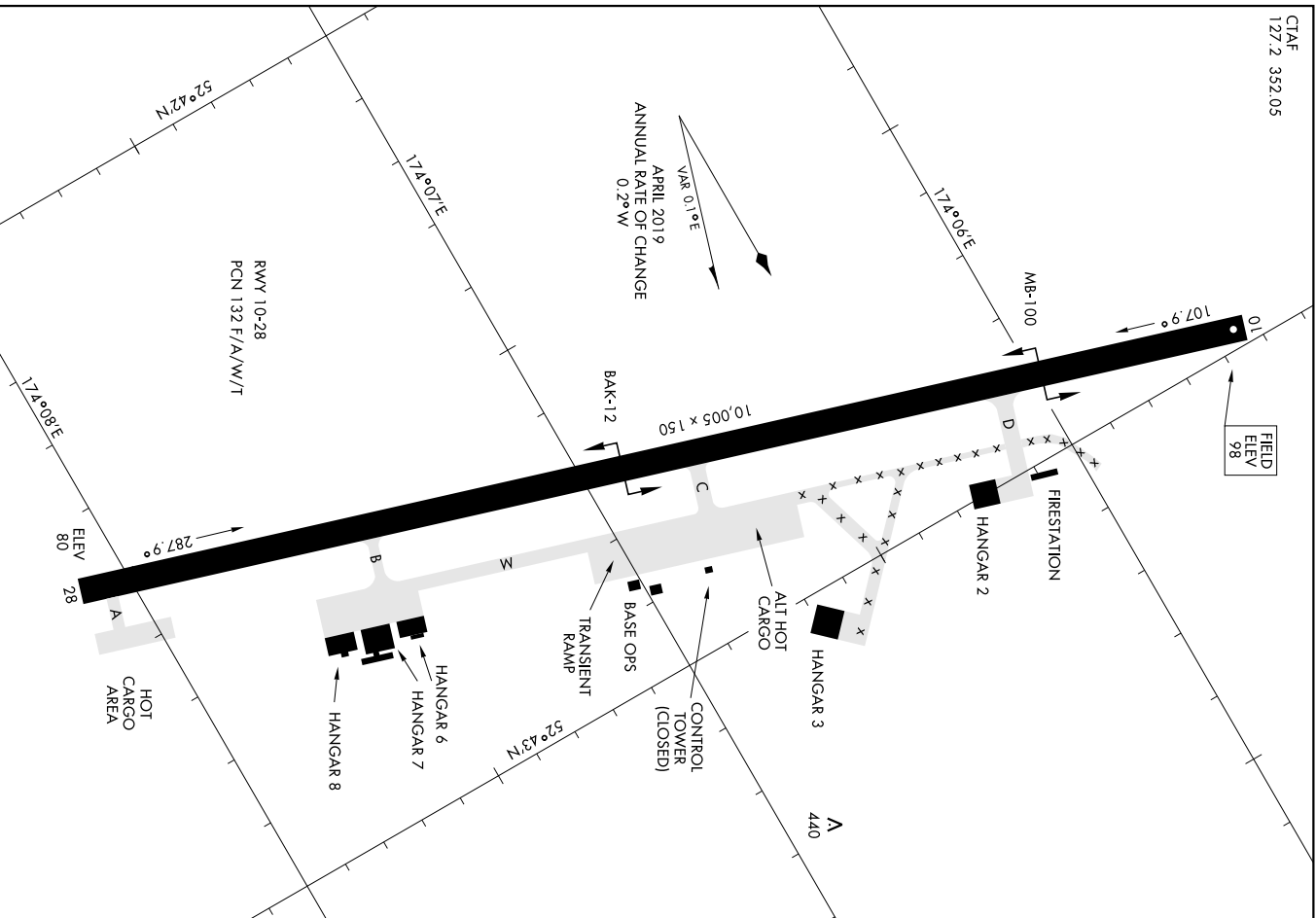
EARECKSON AS (PASV)  
SHEMYA ISLAND, ALASKA

CTAF  
127.2 352.05

FIELD  
ELEV  
98

AK, 20 JUN 2019 to 15 AUG 2019

AK, 20 JUN 2019 to 15 AUG 2019



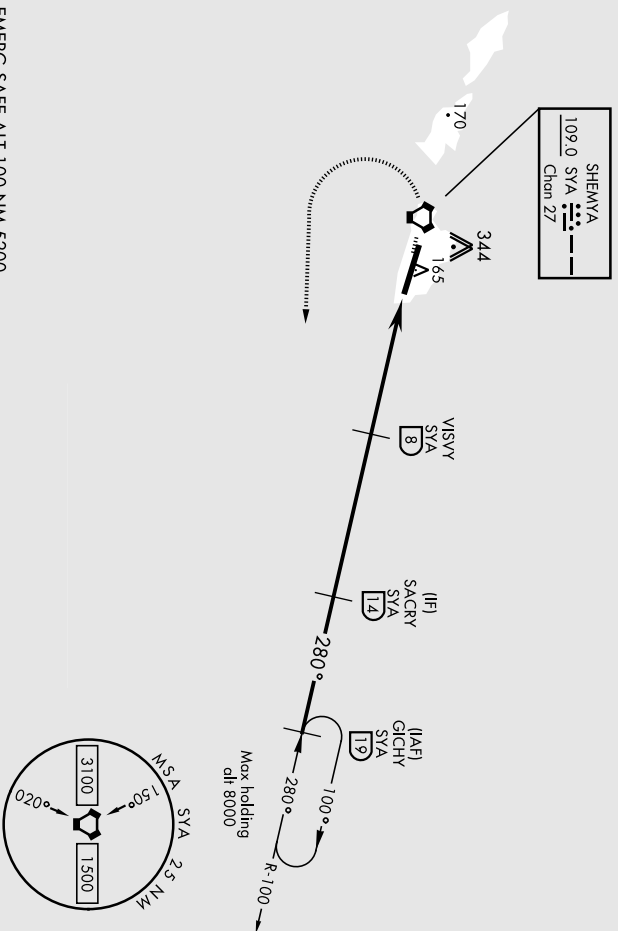
**AIRPORT DIAGRAM**

SHEMYA ISLAND, ALASKA  
EARECKSON AS (PASV)

# VOR/DME or TACAN RWY 28

VORTAC SYA <b>109.0</b> Chan 27	APCH CRS <b>280°</b>	Rwy Idg <b>10,005</b>	THRE <b>83</b>	AI-1246 [USA F]	EARECKSON AS (PAS Y)
		Arpt Elev <b>98</b>			
* When AIS inop, increase CAT AB vis to 1 mile, CAT CDE vis to 1½ miles		SALS 		MISSED APPROACH: Climbing left turn to 3000, intercept!	
** Circling Not Authorized in area N of Rwy 10-28.		SYA R-100 direct GICHY and hold.			
ANCHORAGE CENTER <b>119.1 339.8</b>		CTAF <b>127.2 352.05 0</b>		ASOS <b>135.65</b>	

CAUTION: Numerous obstructions in area N of Rwy 10-28.  
Misled approach requires use of RNAV or ATC radar monitoring.

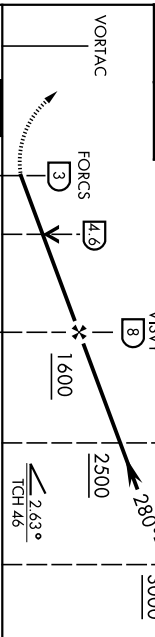


AK, 20 JUN 2019 to 15 AUG 2019

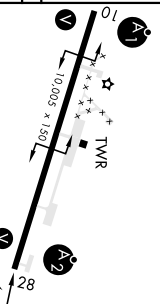
AK, 20 JUN 2019 to 15 AUG 2019

EMERG SAFE ALT 100 NM 5200

3000 GICHY R-100 <b>19</b>						ELEV 98	THRE 83
----------------------------------	--	--	--	--	--	---------	---------



VORTAC						ELEV 98		THRE 83
						ASOS 135.65		
						CTAF 127.2 352.05 0		
						ASOS 135.65		
CATEGORY	A	B	C	D	E			
S-28 *	620-¾ 532 (600-¾)	620-1¼ 532 (600-1¼)	620-1½ 523 (600-1½)	660-2 563 (600-2)				
<b>C</b> CIRCLING **	620-1 523 (600-1)	620-1½ 523 (600-1½)	660-2 563 (600-2)					



SHEMYA I., ALEUTIAN I., ALASKA 52°43'N-174°07'E EARECKSON AS (PAS Y)  
Andl 5 08NOV18

# VOR/DME or TACAN RWY 28

SHEMYA I., ALEUTIAN I., ALASKA

# IIS or LOC/DME RWY 28

19115

AL-1246 [USA-F]

EARECKSON AS (PAS-Y)

LOC 1-SYA <b>110.1</b>	APCH CRS <b>287°</b>	Rwy Idg <b>10,005</b>	TDZE <b>88</b>	Arpt Elev <b>98</b>
---------------------------	-------------------------	--------------------------	-------------------	------------------------

\* When ALS Inop, increase CAT AB vis to 1 mile, CAT CDE vis to 1 1/8 miles.  
\*\* Circling Not Authorized in area N of Rwy 10-28.

SALS  
**A2**

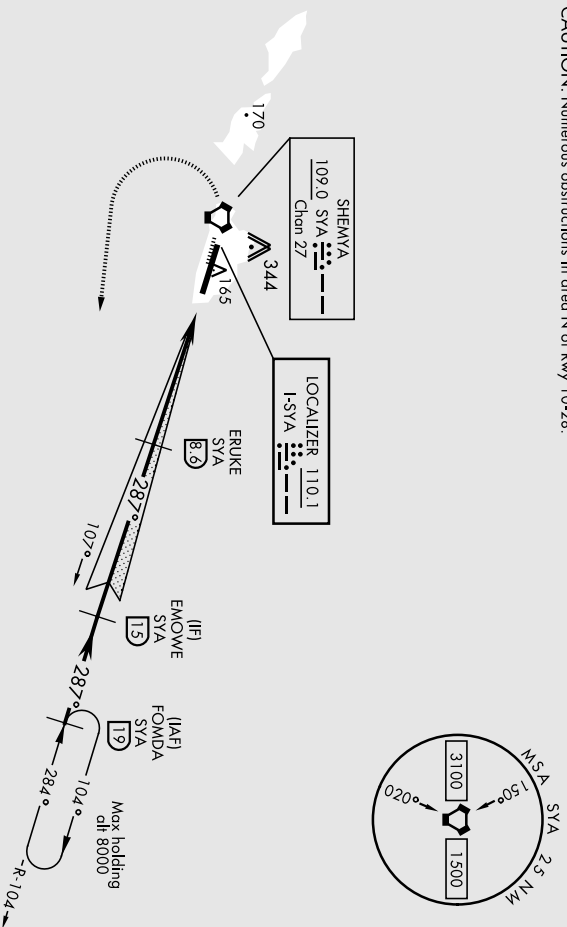
MISSED APPROACH: Climb to 600, then climbing left turn to 3000, intercept SYA R-104 direct FOMDA and hold.

ANCHORAGE CENTER  
**119.1 339.8**

CTAF  
**127.2 352.05 0**

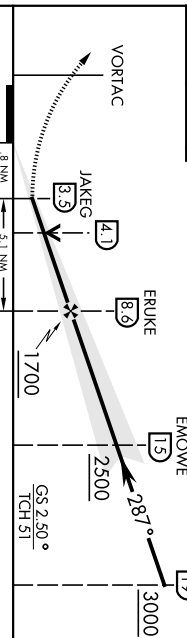
ASOS  
**135.65**

CAUTION: Numerous obstructions in area N of Rwy 10-28.



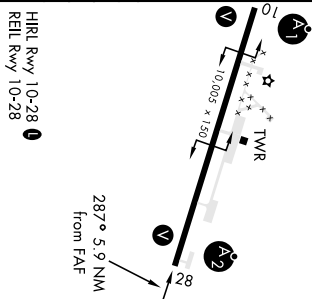
EMERG SAFE ALT 100 NM 5200

600	3000	ELEV 98	TDZE 88
VGSJ and ILS Glidepath not coincident (VGSJ angle 2.50/TCH 46).			



287° 5.9 NM from FAF

CATEGORY	A	B	C	D	E
S-ILS 28	288-3/4				
S-LOC 28 *	500-3/4	412 (500-3/4)	200 (200-3/4)	500-1	412 (500-1)
CIRCLING **	500-1	560-1	560-1 1/2	660-2	
	402 (500-1)	462 (500-1)	462 (500-1 1/2)	562 (600-2)	



SHEMYA I., ALEUTIAN I., ALASKA  
Amdt 5 07DEC17

52°43'N-174°07'E

EARECKSON AS (PAS-Y)

# IIS or LOC/DME RWY 28

SHEMYA I., ALEUTIAN I., ALASKA

19115

# VOR/DME or TACAN RWY 10

VORTAC SYA	APCH CRS	Rwy Idg	<b>10,005</b>
<b>109.0</b>	<b>092°</b>	THR E	<b>98</b>
Chan <b>27</b>		Appt Elev	<b>98</b>

AI-1246 [USA#]

EARECKSON AS (PAS)

\*\* When ALS inop, increase vts to 1½ miles.  
 \*\* Circling Not Authorized in area N of Rwy 10-28.



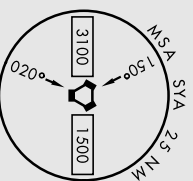
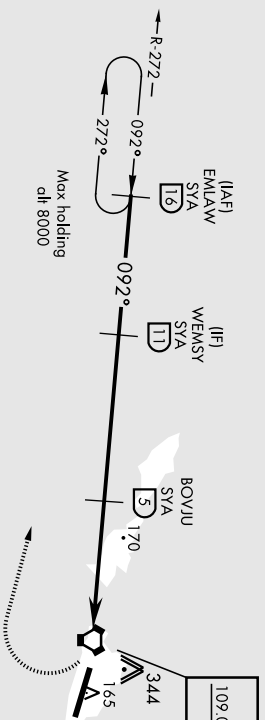
MISSED APPROACH: Climb to 1200, then climbing right turn to 4000, intercept SYA R-272 direct EMLAW and hold.

ANCHORAGE CENTER	<b>119.1 339.8</b>
------------------	--------------------

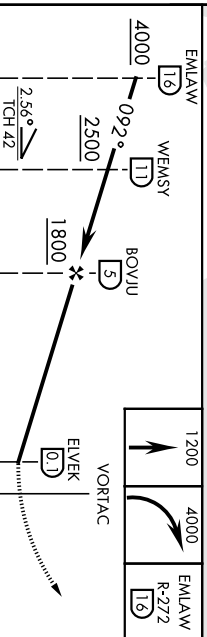
CTAF	<b>127.2 352.05 0</b>
------	-----------------------

ASOS	<b>135.65</b>
------	---------------

CAUTION: Numerous obstructions in area N of Rwy 10-28.  
 Missed approach requires use of RNAV or ATC radar monitoring.



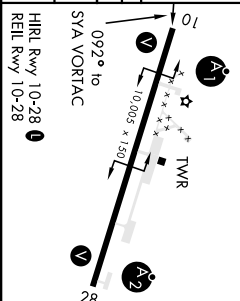
EMERG SAFE ALT 100 NM 5200



CATEGORY	A	B	C	D	E
S-10 *		460-1	362 (400-1)		

ELEV	98	THR	98
------	----	-----	----

CIRCLING **	460-1½	560-1½	660-2
	363 (400-1½)	463 (500-1½)	563 (600-2)



SHEMYA I., ALEUTIAN I., ALASKA  
 Amdt 5 08NOV18

52°43'N-174°07'E

EARECKSON AS (PAS)

# VOR/DME or TACAN RWY 10