

APP CRS	Rwy Idg	<b>2659</b>
<b>270°</b>	TDZE	<b>15</b>
	Apt Elev	<b>17</b>

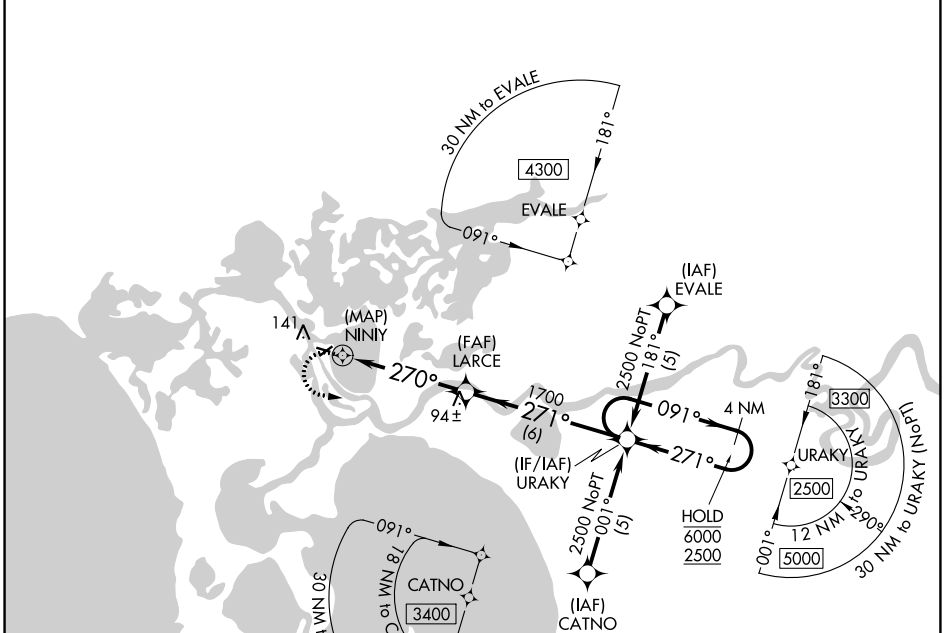
# RNAV (GPS) RWY 27

SELAWIK (WLK) (PASK)

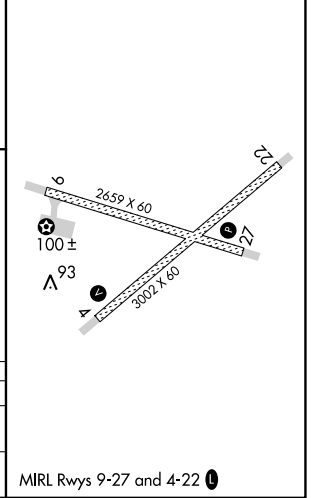
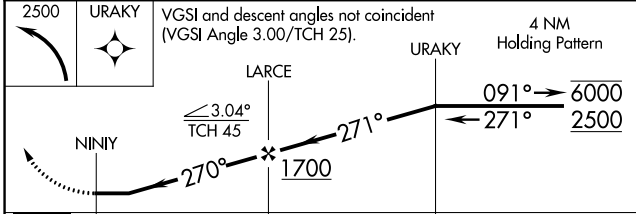
RNP APCH.  
 ▼ Rwy 27 helicopter visibility reduction below 1 SM NA. Straight-in and Circling Rwy 27 NA at night, Circling Rwy 9 NA at night.

MISSED APPROACH: Climbing left turn to 2500 direct URAKY and hold.

AWOS-3P <b>135.65</b>	ANCHORAGE CENTER <b>119.2 263.0</b>	KOTZEBUE RADIO <b>122.5</b>	CTAF <b>122.7</b>
--------------------------	--	--------------------------------	----------------------



ELEV 17	TDZE 15
---------	---------



CATEGORY	A	B	C	D
LNVA MDA	420-1	405 (500-1)	420-1¼	405 (500-1¼)
CIRCLING	480-1 463 (500-1)	580-1 563 (600-1)	580-1½ 563 (600-1½)	580-2 563 (600-2)

MIRL Rwy 9-27 and 4-22

AK, 25 JAN 2024 to 21 MAR 2024

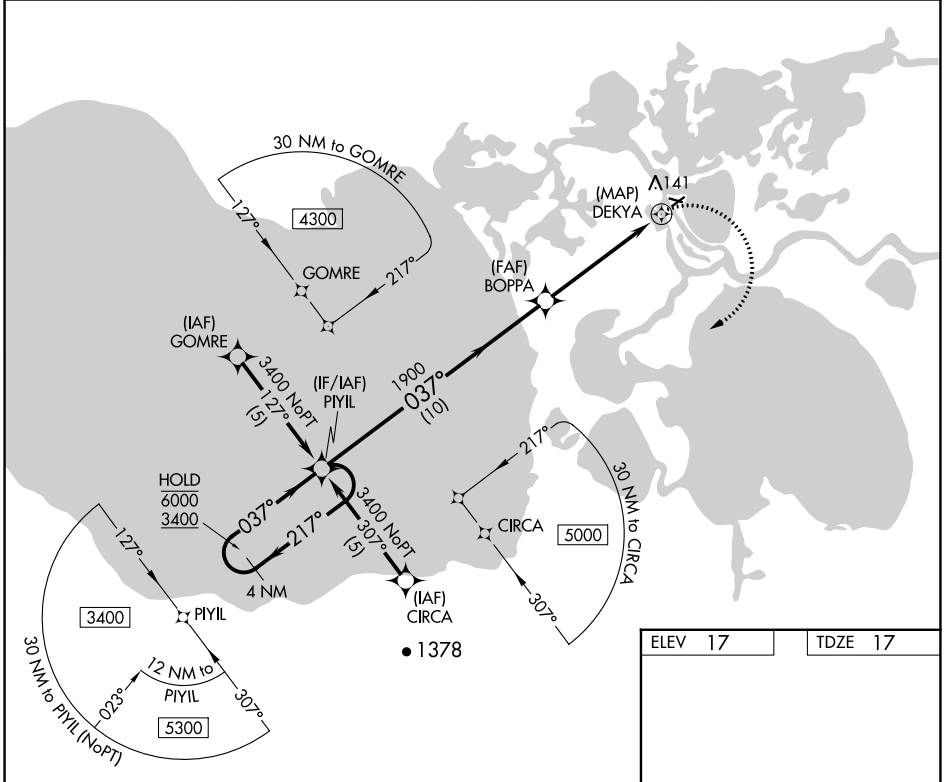
AK, 25 JAN 2024 to 21 MAR 2024

APP CRS	Rwy Idg	<b>3002</b>
<b>037°</b>	TDZE	<b>17</b>
	Apt Elev	<b>17</b>

# RNAV (GPS) RWY 4

SELAWIK (WLK) (PASK)

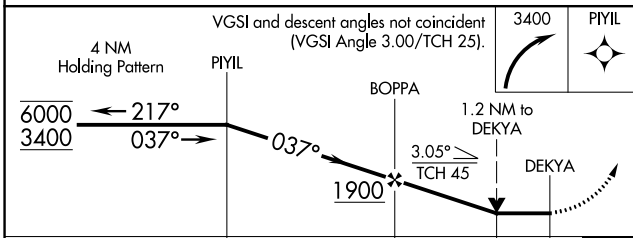
RNP APCH.		MISSED APPROACH: Climbing right turn to 3400 direct PIYIL and hold.	
▼ Circling Rwy 9, 27 NA at night. Rwy 4 helicopter visibility reduction below ¾ SM NA.			
AWOS-3P	ANCHORAGE CENTER	KOTZEBUE RADIO	CTAF
<b>135.65</b>	<b>119.2 263.0</b>	<b>122.5</b>	<b>122.7 0</b>



AK, 25 JAN 2024 to 21 MAR 2024

AK, 25 JAN 2024 to 21 MAR 2024

ELEV 17	TDZE 17
---------	---------



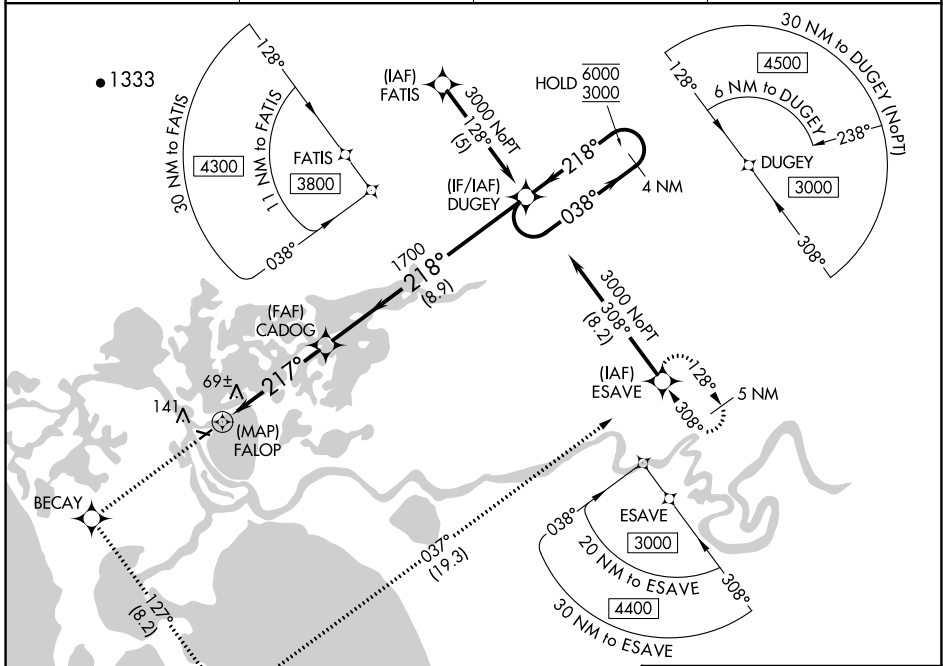
CATEGORY	A	B	C	D
LNVA MDA	420-1	403 (500-1)	420-1¼	403 (500-1¼)
CIRCLING	480-1 463 (500-1)	580-1 563 (600-1)	580-1½ 563 (600-1½)	580-2 563 (600-2)

APP CRS	Rwy Idg	<b>3002</b>
<b>217°</b>	TDZE	<b>17</b>
	Apt Elev	<b>17</b>

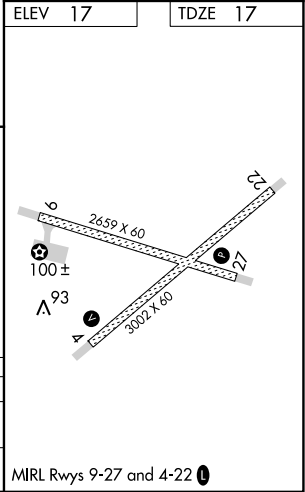
# RNAV (GPS) Y RWY 22

SELAWIK (WLK) (PASK)

RNP APCH. ▼ Circling Rwy 9, 27 NA at night.		MISSED APPROACH: Climb to 3000 direct BECAY and left turn on track 127° to APACU and left turn on track 037° to ESAVE and hold.	
AWOS-3P <b>135.65</b>	ANCHORAGE CENTER <b>119.2 263.0</b>	KOTZEBUE RADIO <b>122.5</b>	CTAF <b>122.7</b>



ELEV	17	TDZE	17
3000	BECAY	APACU	ESAVE
↑	tr 127°	tr 037°	
DUGEY 4 NM Holding Pattern			
CADOG			
FALOP	≤ 3.05° TCH 45	218°	6000 / 3000
0.5	4.6 NM	8.9 NM	
CATEGORY	A	B	C
LNAV MDA	320-1 303 (400-1)		
CIRCLING	480-1 463 (500-1)	580-1 563 (600-1)	580-1½ 563 (600-1½)



AK, 25 JAN 2024 to 21 MAR 2024

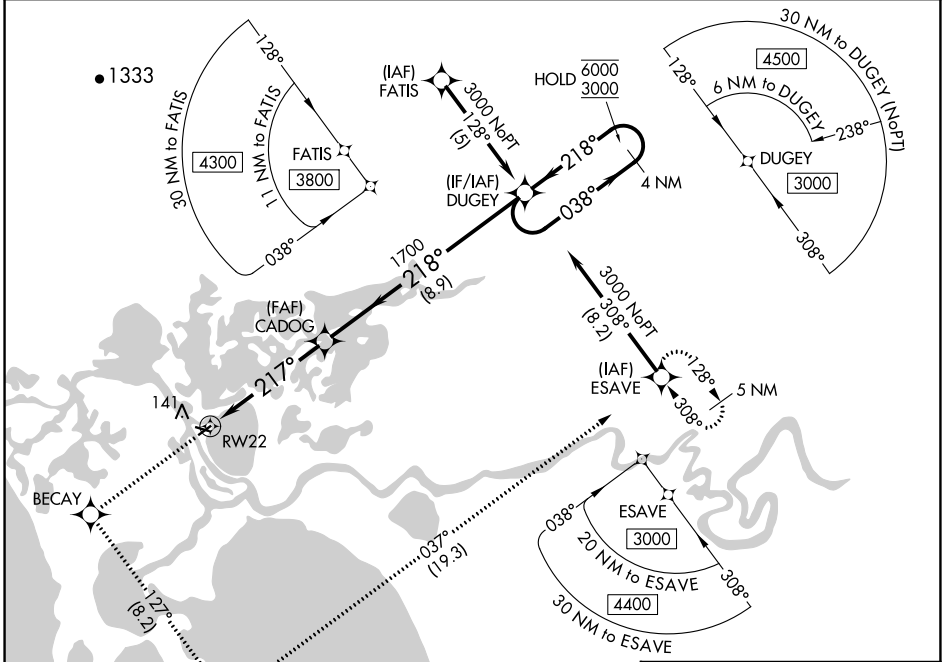
AK, 25 JAN 2024 to 21 MAR 2024

WAAS CH <b>40404</b> <b>W22A</b>	APP CRS <b>217°</b>	Rwy Idg TDZE <b>17</b> Apt Elev <b>17</b>	<b>3002</b>
--	------------------------	---	-------------

# RNAV (GPS) Z RWY 22

SELAWIK (WLK) (PASK)

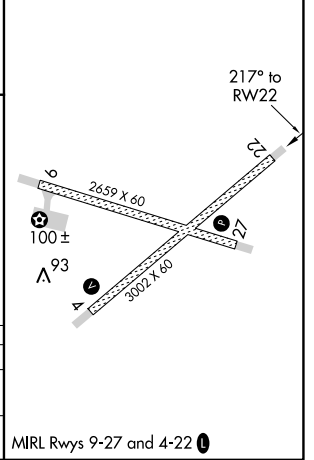
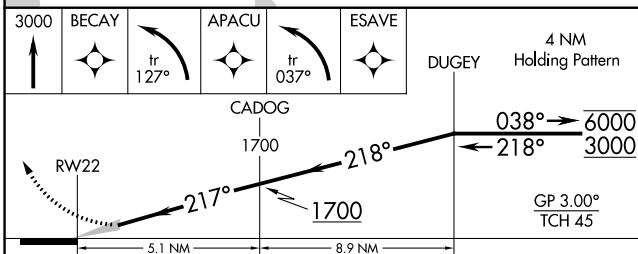
RNP APCH. ▼ For uncompensated Baro-VNAV systems, LNAV/VNAV NA below -25°C or above 49°C.		MISSED APPROACH: Climb to 3000 direct BECAY and left turn on track 127° to APACU and left turn on track 037° to ESAVE and hold.	
AWOS-3P <b>135.65</b>	ANCHORAGE CENTER <b>119.2 263.0</b>	KOTZEBUE RADIO <b>122.5</b>	CTAF <b>122.7</b>



AK, 25 JAN 2024 to 21 MAR 2024

AK, 25 JAN 2024 to 21 MAR 2024

ELEV 17	TDZE 17
---------	---------



CATEGORY	A	B	C	D
LPV DA		267-1	250 (300-1)	
LNAV/VNAV DA		364-1¼	347 (400-1¼)	

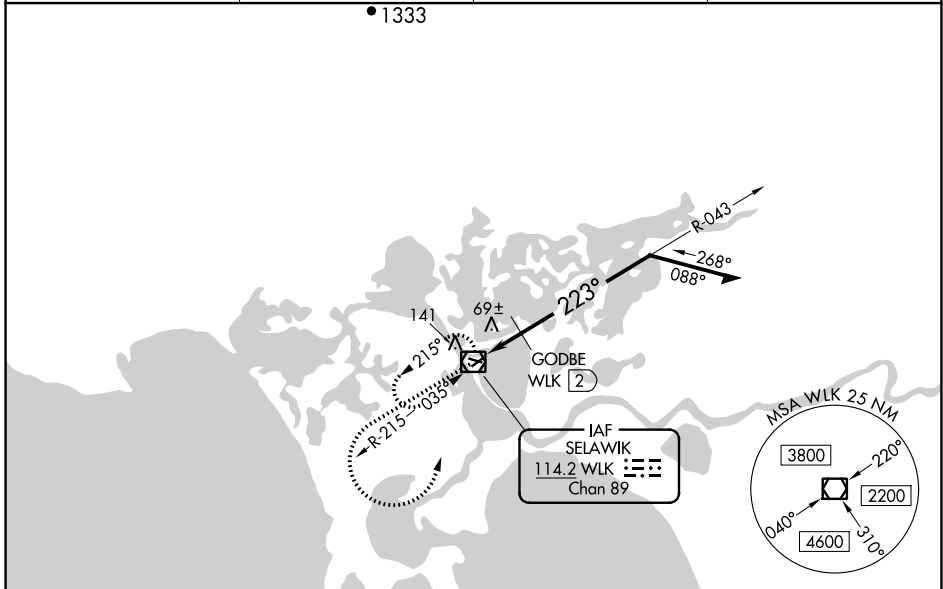
MIRL Rwy 9-27 and 4-22

VOR/DME WLK <b>114.2</b> Chan <b>89</b>	APP CRS <b>223°</b>	Rwy Idg <b>3002</b> TDZE <b>17</b> Apt Elev <b>17</b>
---	------------------------	---

**VOR RWY 22**  
SELAWIK (WLK) (PASK)

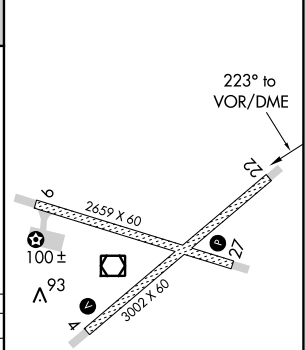
◀ Circling Rwy 9, 27 NA at night. MISSED APPROACH: Climb to 1000 then climbing left turn to 2500 direct WLK VOR/DME and hold, continue climb-in-hold to 2500.

AWOS-3P <b>135.65</b>	ANCHORAGE CENTER <b>119.2 263.0</b>	KOTZEBUE RADIO <b>122.5</b>	CTAF <b>122.7</b>
--------------------------	--	--------------------------------	----------------------



1000	2500	WLK
↑	↪	◻

ELEV 17	TDZE 17
---------	---------



CATEGORY	A	B	C	D
S-22	400-1	383 (400-1)	400-1¼	383 (400-1¼)
CIRCLING	480-1 463 (500-1)	580-1 563 (600-1)	580-1½ 563 (600-1½)	580-2 563 (600-2)
GODBE FIX MINIMUMS				
S-22	340-1 323 (400-1)			
CIRCLING	480-1 463 (500-1)	580-1 563 (600-1)	580-1½ 563 (600-1½)	580-2 563 (600-2)

MRL Rwy 9-27 and 4-22

AK, 25 JAN 2024 to 21 MAR 2024

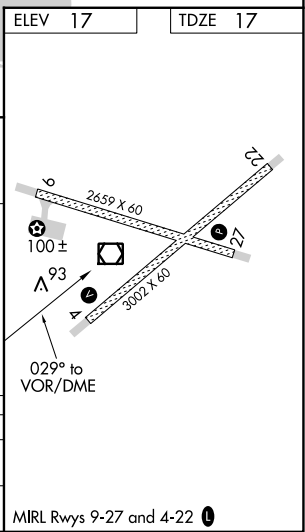
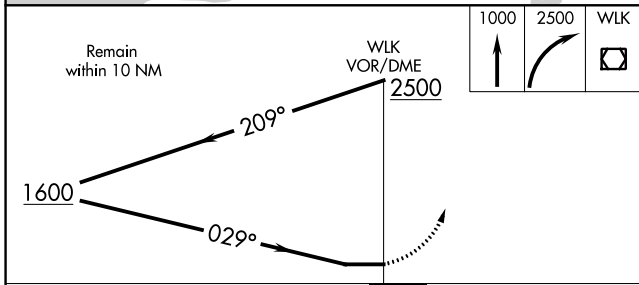
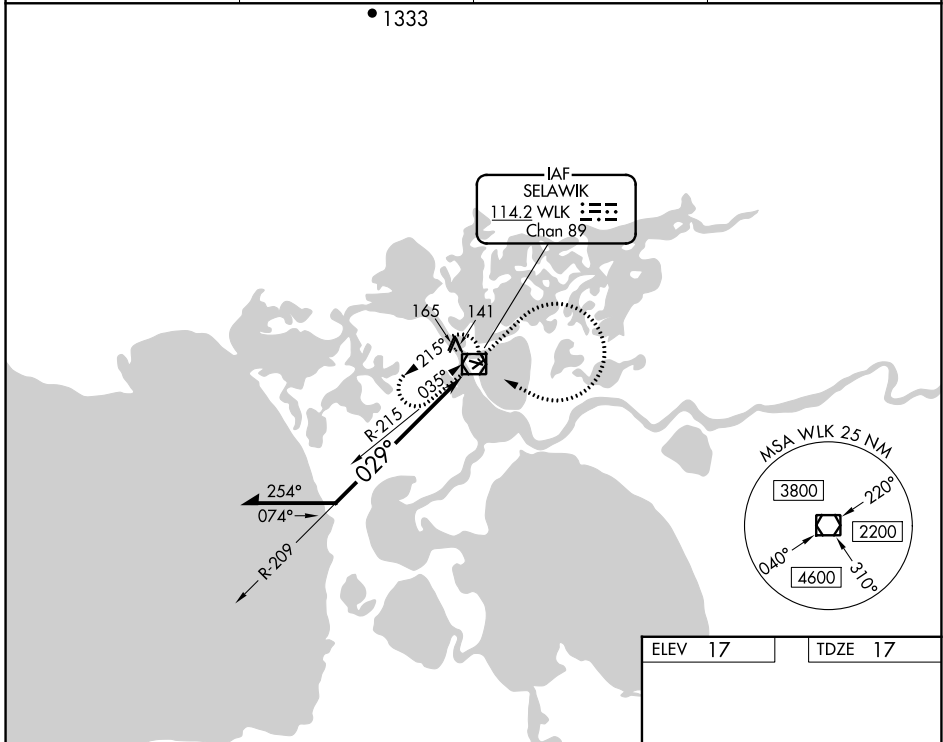
AK, 25 JAN 2024 to 21 MAR 2024

VOR/DME WLK <b>114.2</b> Chan <b>89</b>	APP CRS <b>029°</b>	Rwy Idg <b>3002</b> TDZE <b>17</b> Apt Elev <b>17</b>
---	------------------------	---

# VOR RWY 4

SELAWIK (WLK) (PASK)

<p><b>▼</b> Rwy 4 helicopter visibility reduction below ¼ SM NA. Circling Rwy 9, 27 NA at night.</p>		<p>MISSED APPROACH: Climb to 1000 then climbing right turn to 2500 direct WLK VOR/DME and hold, continue climb-in-hold to 2500.</p>	
AWOS-3P <b>135.65</b>	ANCHORAGE CENTER <b>119.2 263.0</b>	KOTZEBUE RADIO <b>122.5</b>	CTAF <b>122.7 0</b>



CATEGORY	A	B	C	D
S-4	520-1	503 (600-1)	520-1½	503 (600-1½)
CIRCLING	520-1 503 (600-1)	580-1 563 (600-1)	580-1½ 563 (600-1½)	580-2 563 (600-2)

AK, 25 JAN 2024 to 21 MAR 2024

AK, 25 JAN 2024 to 21 MAR 2024