

LOC/DME I-OME 108.7 Chan 24	APP CRS 279°	Rwy Idg 6009 TDZE 25 Apt Elev 41
--	------------------------	---

ILS Y or LOC Y RWY 28

NOME (OME)(PAOM)

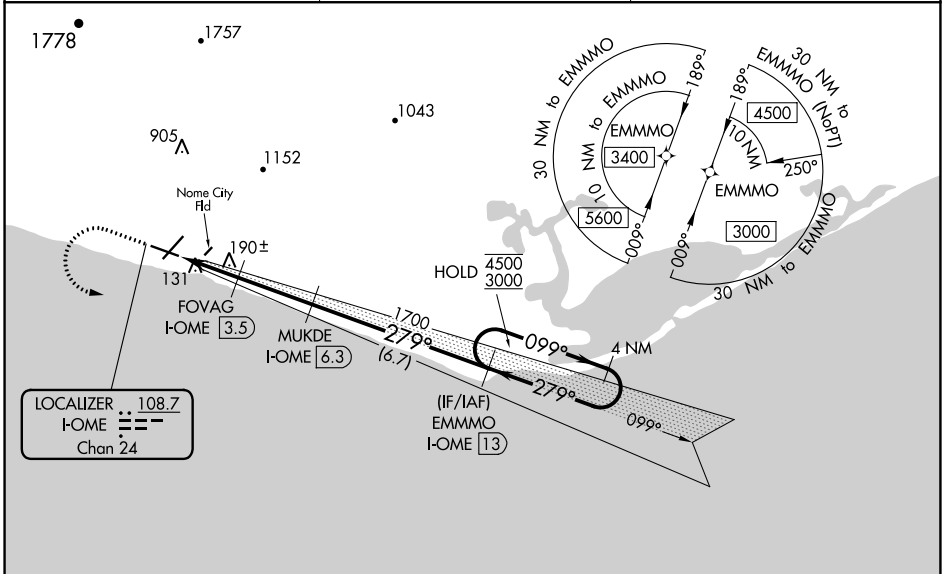
RNAV 1-GPS required. DME required.

⚠ Circling Rwy 21 NA at night. Rwy 28 helicopter visibility reduction below RVR 4000 NA. For inop ALS, increase S-LOC 28 Cats A/B visibility to RVR 5500 and Cats C/D visibility to RVR 6000. Inop table does not apply to S-ILS Rwy 28. Circling NA for Cats C and D north of Rwy 10-28.

MALSR

MISSED APPROACH: Climb to 1300 then climbing left turn to 3000 direct EMMMO and hold.

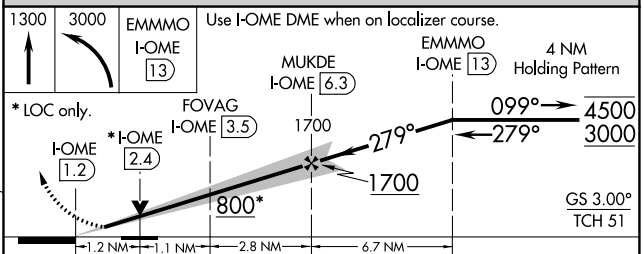
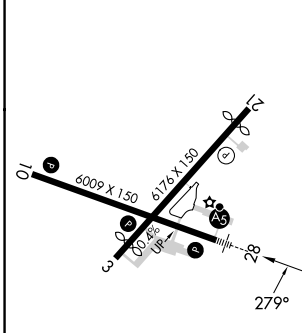
AFIS 119.925	ANCHORAGE CENTER 133.3 290.4	NOME RADIO 123.6 (CTAF) ①
------------------------	--	-------------------------------------



AK, 25 JAN 2024 to 21 MAR 2024

AK, 25 JAN 2024 to 21 MAR 2024

ELEV 41	D	TDZE 25
---------	----------	---------



CATEGORY	A	B	C	D
S-ILS 28		275/40	250 (300-¾)	
S-LOC 28		440/40	415 (400-¾)	
C CIRCLING	540-1	499 (500-1)	540-1½ 499 (500-1½)	700-2 659 (700-2)

- REIL Rwys 3 and 10 ①
- HIRL Rwy 10-28 ①
- MIRL Rwy 3-21 ①

LOC/DME I-OME	APP CRS	Rwy Ldg	6009
108.7	279°	TDZE	22
Chan 24		Apt Elev	38

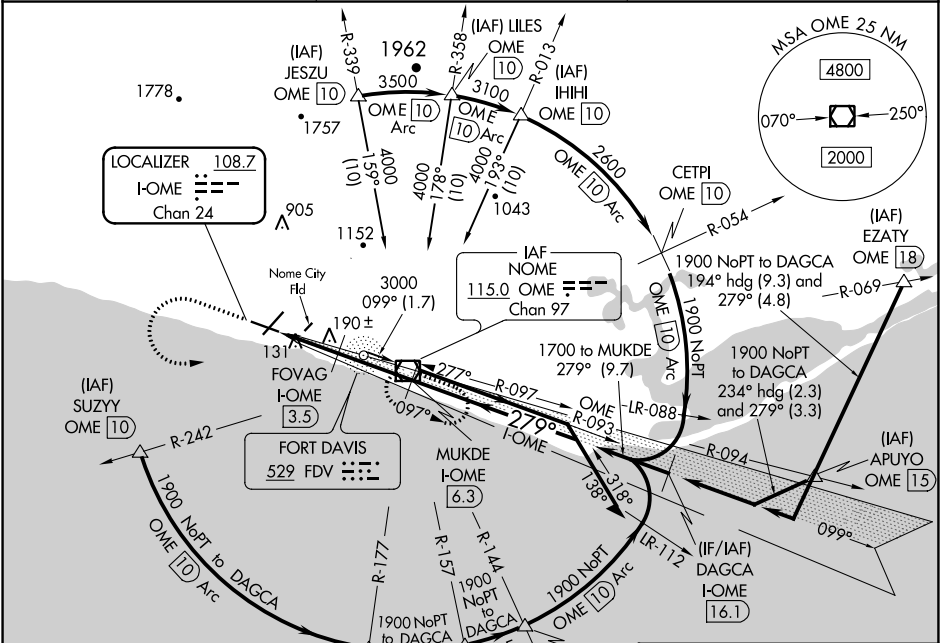
ILS Z or LOC Z RWY 28

NOME(OME)(PAOM)

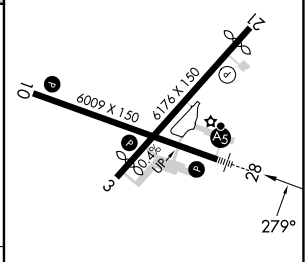
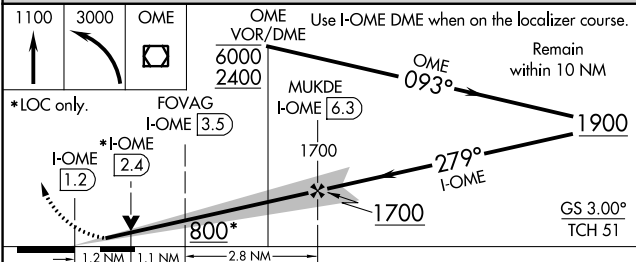
⚠ DME required. Circling Rwy 21 NA at night. Circling NA for Cats C and D north of Rwy 10-28. Inop table does not apply to S-ILS 28 all Cats and S-LOC 28 Cats A and B. For inop ALS, increase S-LOC 28 Cats C and D to RVR 6000.

MALSR MISSED APPROACH: Climb to 1100 then climbing left turn to 3000 direct OME VOR/DME and hold, continue climb-in-hold to 3000.

AFIS 119.925	ANCHORAGE CENTER 133.3 290.4	NOME RADIO 123.6 (CTAF)
------------------------	--	-----------------------------------



ELEV 38	D TDZE 22
---------	------------------



CATEGORY	A	B	C	D
S-ILS 28		272/50	250 (300-1)	
S-LOC 28		440/50	418 (500-1)	
C CIRCLING	540-1	502 (600-1)	540-1½ 502 (600-1½)	700-2 662 (700-2)

REIL Rwys 3 and 10 **Ⓛ**
 HIRL Rwy 10-28 **Ⓛ**
 MIRL Rwy 3-21 **Ⓛ**

AK, 25 JAN 2024 to 21 MAR 2024

AK, 25 JAN 2024 to 21 MAR 2024

LOC/DME I-OME 108.7 Chan 24	APP CRS 099°	Rwy Idg 6009 TDZE 16 Apt Elev 38
---	------------------------	---

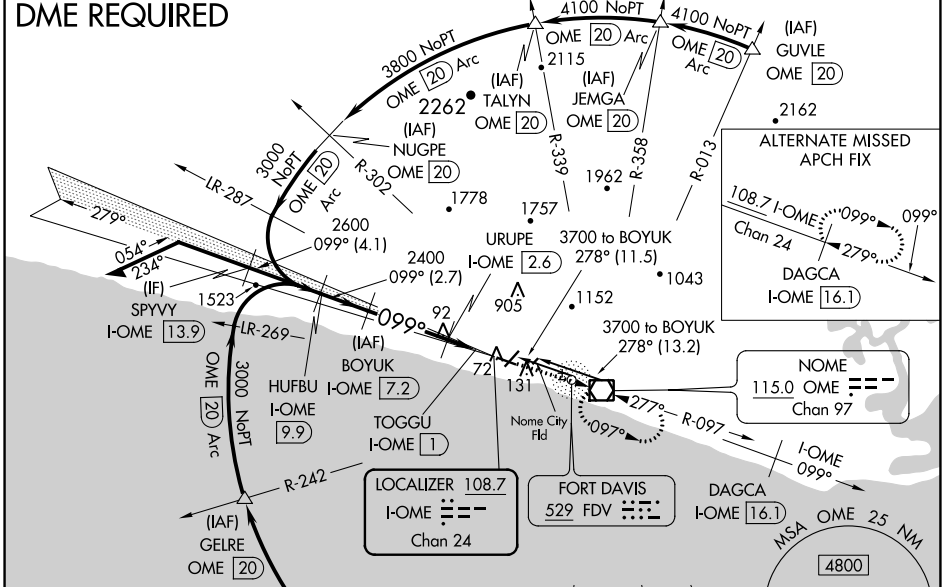
LOC/DME BC RWY 10

NOME (OME) (PAOM)

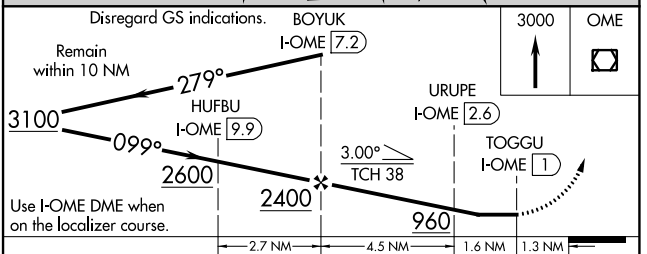
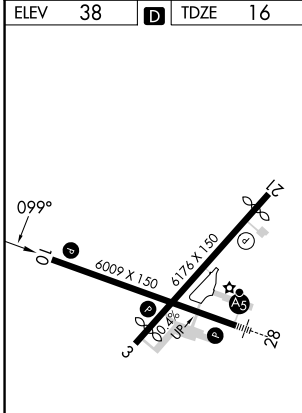
LOC BC unusable inside TOGGU/I-OME 1 DME. Night landing: Rwy 10 operational VGSi required, remain on or above VGSi glidepath until threshold. Night landing: Rwy 21 NA. Circling NA for Cats C and D north of Rwy 10-28.

MISSED APPROACH: Climb to 3000 direct OME VOR/DME and hold, continue climb-in-hold to 3000.

AFIS 119.925	ANCHORAGE CENTER 133.3 290.4	NOME RADIO 123.6 (CTAF)
------------------------	--	-----------------------------------



ELEV 38	D	TDZE 16
---------	---	---------



CATEGORY	A	B	C	D
S-10		340-1½	324 (400-1½)	
CIRCLING		540-1½	502 (600-1½)	700-2 662 (700-2)

MIRL Rwy 3-21
HIRL Rwy 10-28
REIL Rwy 3 and 10

AK, 25 JAN 2024 to 21 MAR 2024

AK, 25 JAN 2024 to 21 MAR 2024

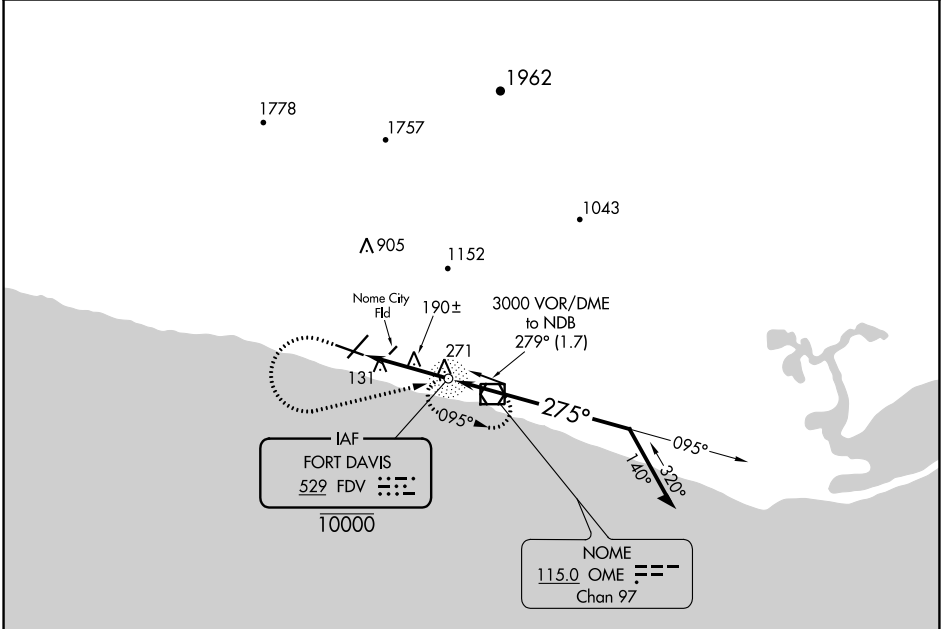
NDB FDV 529	APP CRS 275°	Rwy Idg TDZE Apt Elev	N/A N/A 38
-----------------------	------------------------	-----------------------------	---------------------------------------

NDB-A
NOME (OME)(PAOM)

▼ Circling NA for Cats C and D north of Rwy 10-28.
Helicopter visibility reduction below 1 SM NA.
Night Landing: Rwy 21, NA.

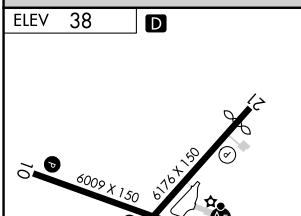
MISSED APPROACH: Climb to 1200 then climbing left turn to 3000 direct FDV NDB and hold.

AFIS 119.925	ANCHORAGE CENTER 133.3 290.4	NOME RADIO 123.6 (CTAF) ①
------------------------	--	--



AK, 25 JAN 2024 to 21 MAR 2024

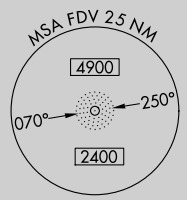
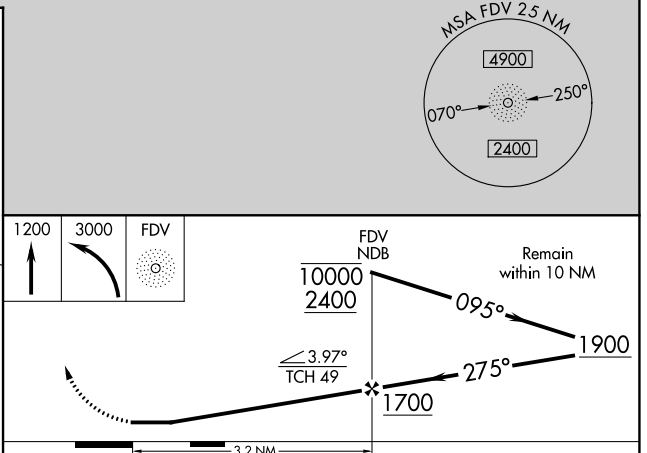
AK, 25 JAN 2024 to 21 MAR 2024



ELEV 38 **D**

REIL Rws 3 and 10 **①**
HIRL Rwy 10-28 **①**
MIRL Rwy 3-21 **①**

FAF to MAP 3.2 NM	1200	3000	FDV		
Knots	60	90	120	150	180
Min:Sec	3:12	2:08	1:36	1:17	1:04



CATEGORY	A	B	C	D
☑ CIRCLING	540-1	502 (600-1)	540-1½ 502 (600-1½)	700-2 662 (700-2)

NOME, ALASKA

AL-1231 (FAA)

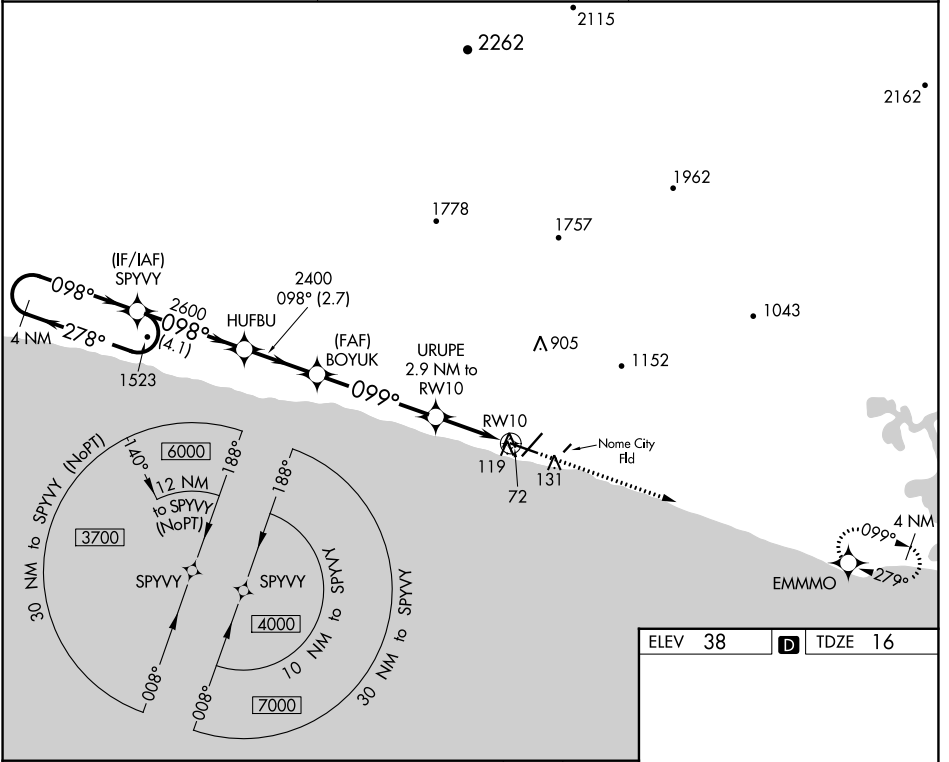
23222

WAAS CH 40434 W10A	APP CRS 099°	Rwy Idg 6009 TDZE 16 Apt Elev 38
--	------------------------	---

RNAV (GPS) RWY 10

NOME (OME)(PAOM)

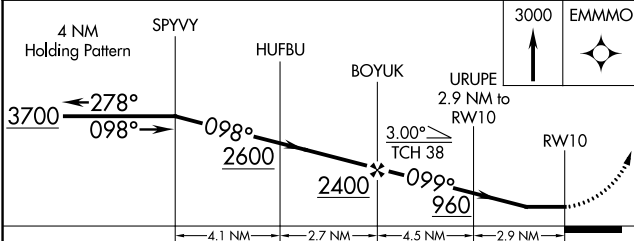
<p>▽ DME/DME RNP-0.3 NA. Helicopter visibility reduction below 1 SM NA. Night Landing: Rwy 21 NA, Rwy 10 operational VGSI required, remain on or above VGSI glidepath until threshold. Circling NA for Cats C and D north of Rwy 10-28.</p>		MISSED APPROACH: Climb to 3000 direct EMMMO and hold.
AFIS 119.925	ANCHORAGE CENTER 133.3 290.4	NOME RADIO 123.6 (CTAF) 1



AK, 25 JAN 2024 to 21 MAR 2024

AK, 25 JAN 2024 to 21 MAR 2024

ELEV 38	D TDZE 16
---------	------------------



<p>REIL Rwys 3 and 10 1 HIRL Rwy 10-28 1 MIRL Rwy 3-21 1</p>

CATEGORY	A	B	C	D
LP MDA		340-1	324 (400-1)	
LNAV MDA		380-1	364 (400-1)	
C CIRCLING	540-1	502 (600-1)	540-1½ 502 (600-1½)	700-2 662 (700-2)

NOME, ALASKA
Amdt 2 13NOV14

64°31'N-165°27'W

RNAV (GPS) RWY 10

NOME (OME)(PAOM)

NOME, ALASKA

AL-1231 (FAA)

23222

WAAS CH 45927 W28A	APP CRS 279°	Rwy Idg TDZE 22 Apt Elev 38	6009
--	------------------------	---	-------------

RNAV (GPS) RWY 28

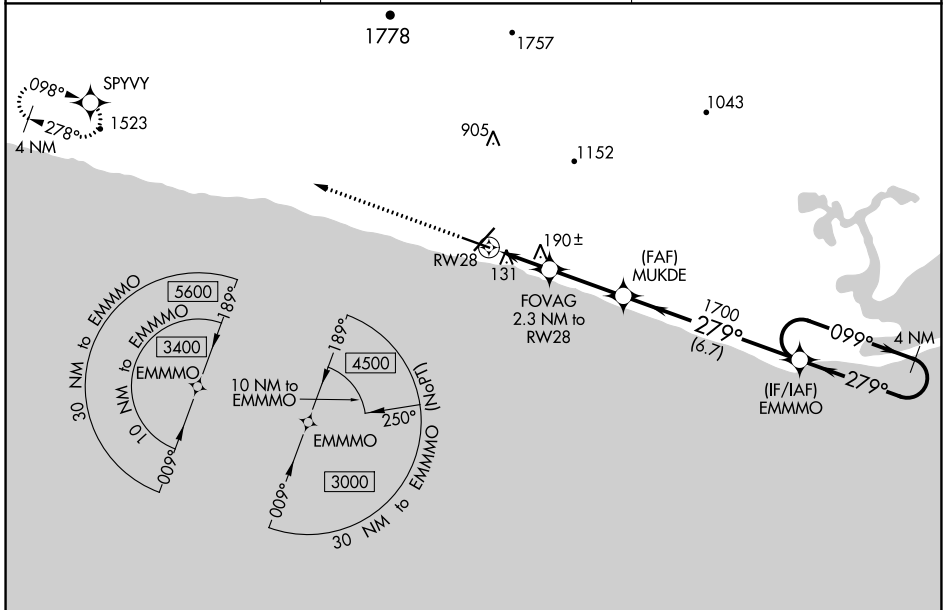
NOME (OME)(PAOM)

⚠ Inoperative table does not apply to LPV 28 all Cats. For uncompensated Baro-VNAV systems, LNAV/VNAV NA below -18°C (0°F) or above 54°C (130°F). Circling NA for Cats C and D north of Rwy 10-28. DME/DME RNP-0.3 NA. Helicopter visibility reduction below 4000 NA. Night landing: Rwy 21 NA.



MISSED APPROACH: Climb to 3700 direct SPYVY and hold, continue climb-in-hold to 3700.

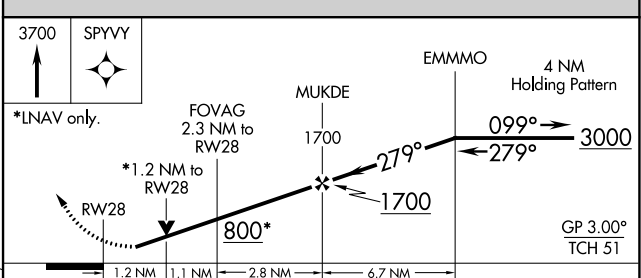
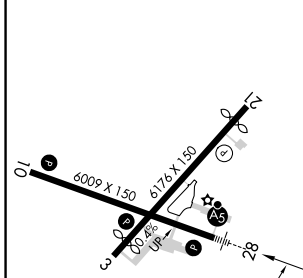
AFIS 119.925	ANCHORAGE CENTER 133.3 290.4	NOME RADIO 123.6 (CTAF) ①
------------------------	--	--



AK, 25 JAN 2024 to 21 MAR 2024

AK, 25 JAN 2024 to 21 MAR 2024

ELEV 38	D	TDZE 22
---------	----------	---------



CATEGORY	A	B	C	D
LPV DA		272/40	250 (300-¾)	
LNAV/VNAV DA		298/40	276 (300-¾)	
LNAV MDA		440/40	418 (500-¾)	
C CIRCLING	540-1	502 (600-1)	540-1½ 502 (600-1½)	700-2 662 (700-2)

REIL Rwy 3 and 10 **①**
HIRL Rwy 10-28 **①**
MIRL Rwy 3-21 **①**

NOME, ALASKA
Amdt 2 13NOV14

64°31'N-165°27'W

RNAV (GPS) RWY 28

APP CRS 031°	Rwy Idg 5576
	TDZE 25
	Apt Elev 38

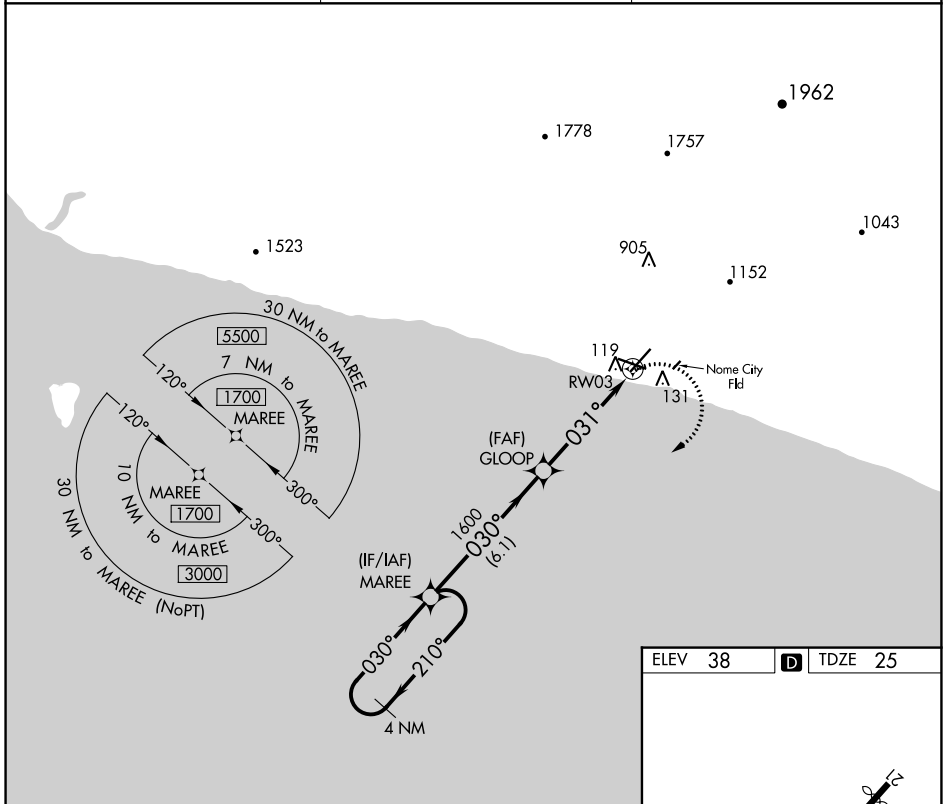
RNAV (GPS) RWY 3

NOME (OME)(PAOM)

⚠ DME/DME RNP-0.3 NA. Helicopter visibility reduction below 1 SM NA. Night landing: Rwy 21 NA. Circling NA for Cats C and D north of Rwy 10-28.

MISSED APPROACH: Climbing right turn to 1700 direct MAREE and hold.

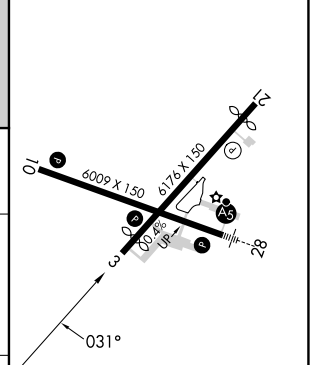
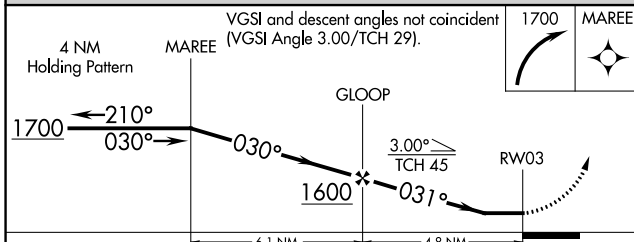
AFIS 119.925	ANCHORAGE CENTER 133.3 290.4	NOME RADIO 123.6 (CTAF) Ⓛ
------------------------	--	--



AK, 25 JAN 2024 to 21 MAR 2024

AK, 25 JAN 2024 to 21 MAR 2024

ELEV 38	D TDZE 25
---------	------------------



CATEGORY	A	B	C	D
LNVA MDA	440-1	415 (500-1)	440-1¼	415 (500-1¼)
C CIRCLING	540-1	502 (600-1)	540-1½	700-2 662 (700-2)

REIL Rwy 3 and 10 **Ⓛ**
 HIRL Rwy 10-28 **Ⓛ**
 MIRL Rwy 3-21 **Ⓛ**

VOR/DME OME 115.0 Chan 97	APP CRS 276°	Rwy Idg 6009 TDZE 22 Apt Elev 38
--	------------------------	---

VOR RWY 28

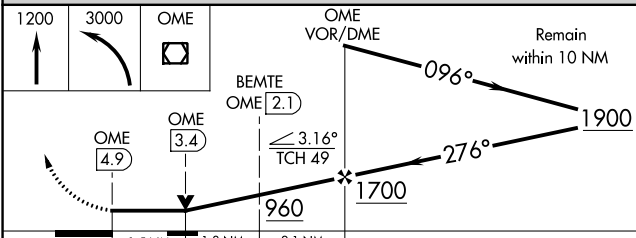
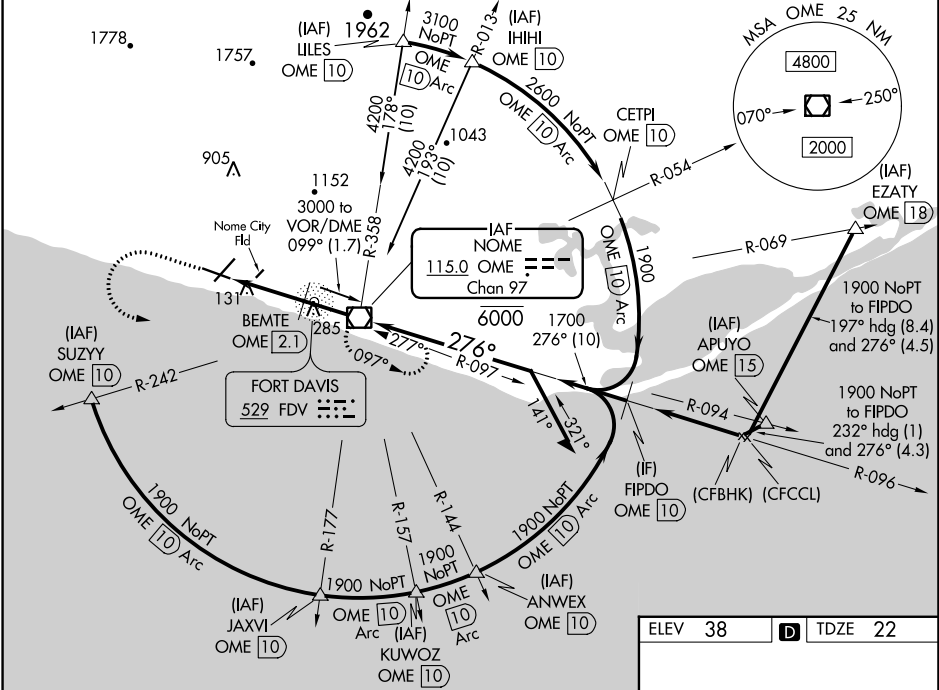
NOME (OME)(PAOM)

⚠ For inoperative MALS, increase S-28 BEMTE FIX minimums Cat A/B visibility to RVR 5000, Cat C/D visibility to 1½ mile. Circling NA for Cats C and D north of Rwy 10-28. Night Landing: Rwy 21 NA. Helicopter visibility reduction below RVR 4000 NA.

MALS
AS

MISSED APPROACH: Climb to 1200 then climbing left turn to 3000 direct OME VOR/DME and hold, continue climb-in-hold to 3000.

AFIS 119.925	ANCHORAGE CENTER 133.3 290.4	NOME RADIO 123.6 (CTAF) 0
-------------------------------	---	--



CATEGORY	A	B	C	D
S-28	960/40	938 (1000-¾)	960-2	938 (1000-2)
C CIRCLING	960-1¼	922 (1000-1¼)	960-2¾	960-3
BEMTE FIX MINIMUMS				
S-28	540/40	518 (600-¾)	540/55	518 (600-1)
C CIRCLING	540-1	502 (600-1)	540-1½	700-2
			662 (700-2)	

ELEV 38	D TDZE 22
---------	------------------

REIL Rwy 3 and 10 **1**
HIRL Rwy 10-28 **1**
MIRL Rwy 3-21 **1**

FAF to MAP 4.9 NM					
Knots	60	90	120	150	180
Min:Sec	4:54	3:16	2:27	1:58	1:38

AK, 25 JAN 2024 to 21 MAR 2024

AK, 25 JAN 2024 to 21 MAR 2024