

# RNAV (GPS) RWY 21

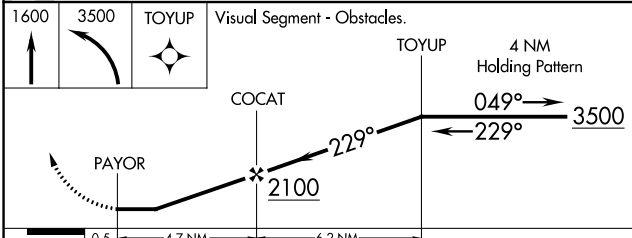
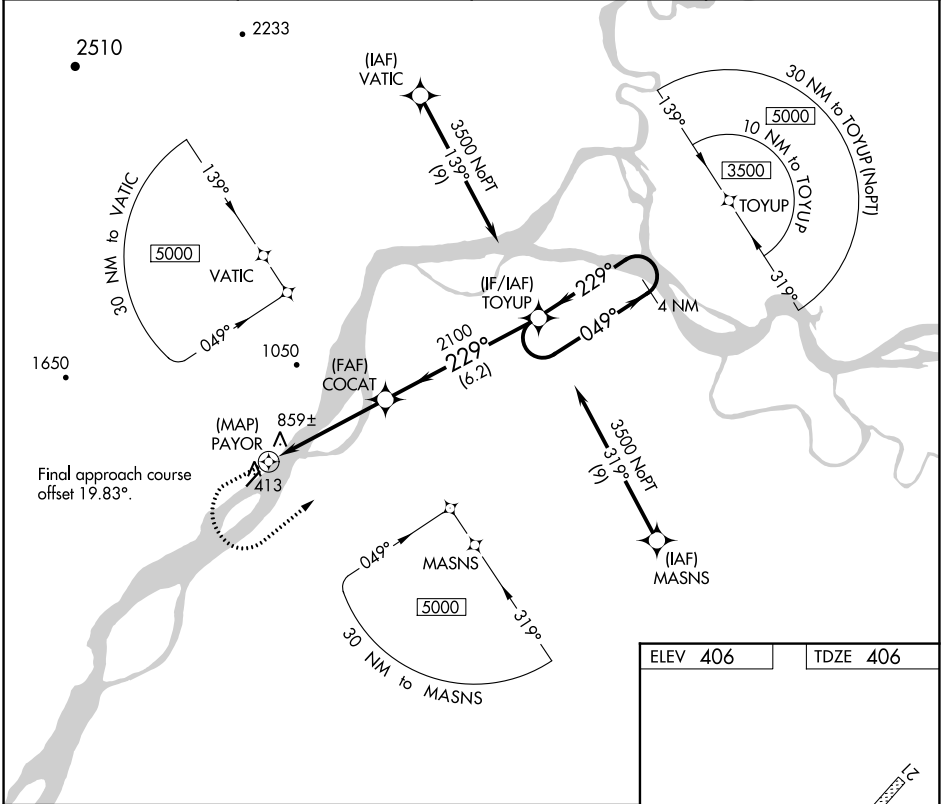
NULATO (NUL) (PANU)

APP CRS <b>229°</b>	Rwy Idg <b>4011</b>
	TDZE <b>406</b>
	Apt Elev <b>406</b>

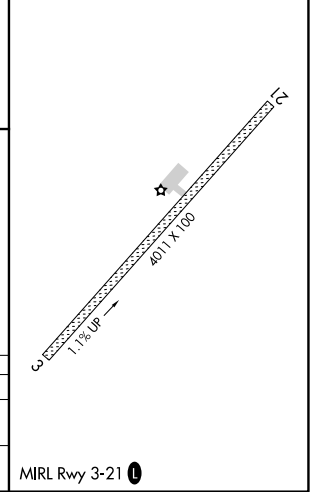
**⚠** NA Rwy 21 helicopter visibility reduction below 1 SM NA. DME/DME RNP-0.3 NA. Use Galena altimeter setting. Procedure NA at night.

**⚠** MISSED APPROACH: Climb to 1600 then climbing left turn to 3500 direct TOYUP and hold.

AWOS-3PT <b>118.0</b>	GAL/PAGA AWOS-3P <b>132.525</b>	ANCHORAGE CENTER <b>127.0 290.2</b>	FAIRBANK RADIO <b>122.2</b>	UNICOM <b>122.9</b>
--------------------------	------------------------------------	--	--------------------------------	------------------------



ELEV 406	TDZE 406
----------	----------



CATEGORY	A	B	C	D
LNVA MDA	1220-1 814 (900-1)	1220-1¼ 814 (900-1¼)	1220-2½	814 (900-2½)
<b>C</b> CIRCLING	1280-1¼ 874 (900-1¼)	1380-1½ 974 (1000-1½)	1420-3 1014 (1100-3)	1620-3 1214 (1300-3)

AK, 25 JAN 2024 to 21 MAR 2024

AK, 25 JAN 2024 to 21 MAR 2024

# RNAV (GPS) RWY 3

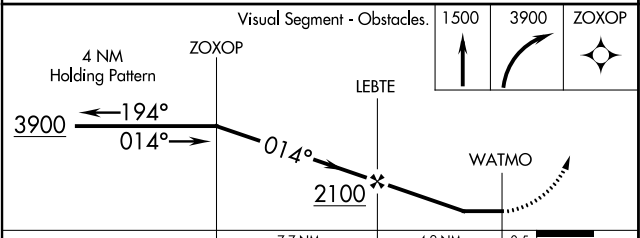
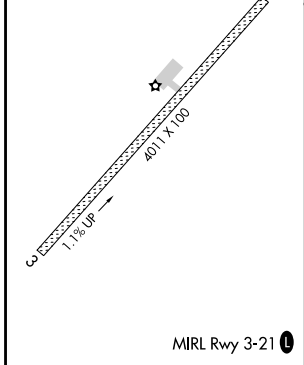
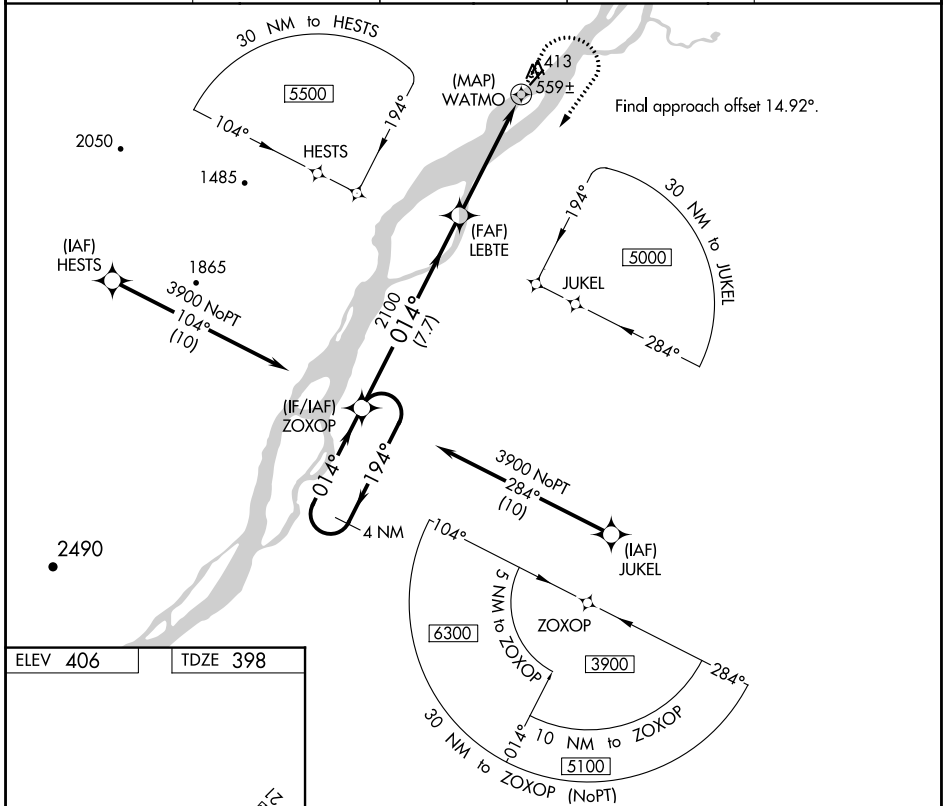
NULATO (NUL) (PANU)

APP CRS <b>014°</b>	Rwy Idg <b>4011</b>
	TDZE <b>398</b>
	Apt Elev <b>406</b>

**NA** Rwy 3 helicopter visibility reduction below 1 SM NA.  
 DME/DME RNP-0.3 NA. Procedure NA at night.  
 Use Galena altimeter setting.

MISSED APPROACH: Climb to 1500 then climbing right turn to 3900 direct ZOXOP and hold.

AWOS-3PT <b>118.0</b>	GAL/PAGA AWOS-3P <b>132.525</b>	ANCHORAGE CENTER <b>127.0 290.2</b>	FAIRBANK RADIO <b>122.2</b>	UNICOM <b>122.90</b>
--------------------------	------------------------------------	--	--------------------------------	-------------------------



CATEGORY	A	B	C	D
LNAV MDA	920-1	522 (600-1)	920-1½	522 (600-1½)
<input checked="" type="checkbox"/> CIRCLING	1280-1¼ 874 (900-1¼)	1380-1½ 974 (1000-1½)	1420-3 1014 (1100-3)	1620-3 1214 (1300-3)

AK, 25 JAN 2024 to 21 MAR 2024

AK, 25 JAN 2024 to 21 MAR 2024