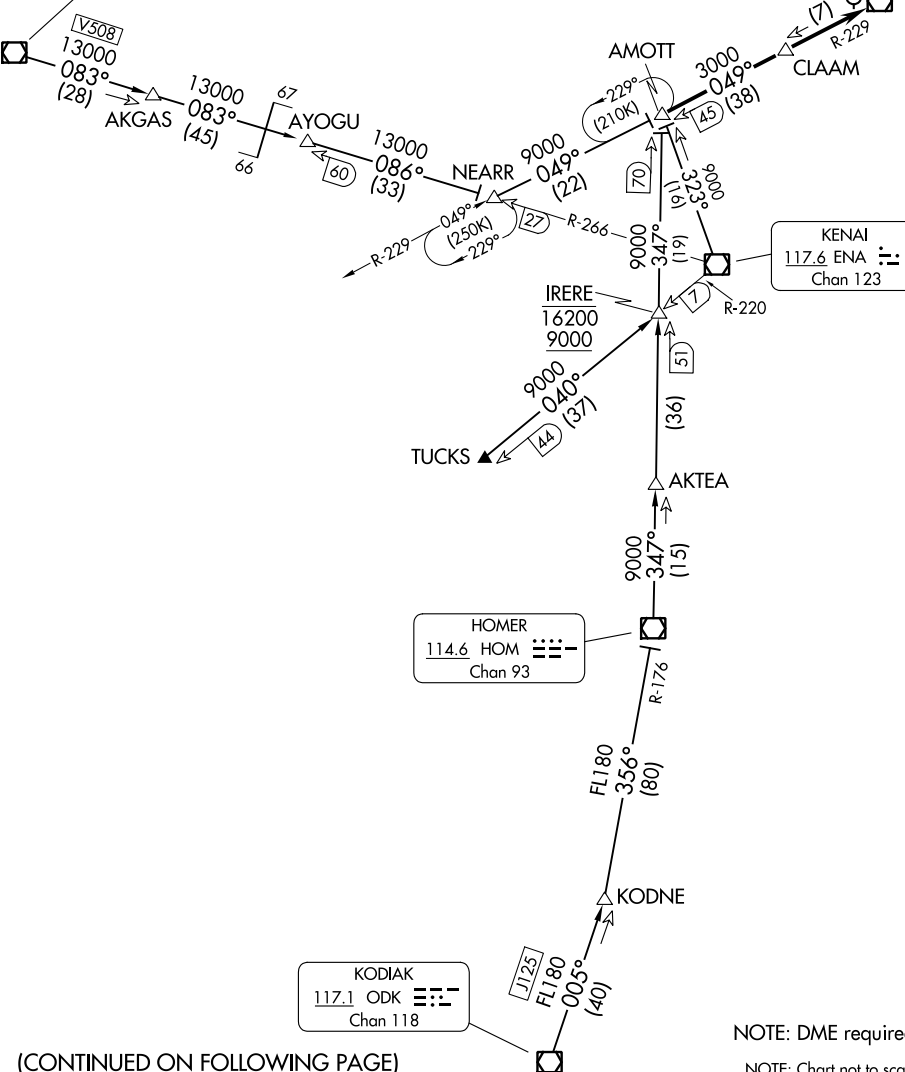


ANCHORAGE APP CON
126.4 270.25
ANC/PANC D-ATIS
135.5
MRI/PAMR ATIS
124.25
PAED ATIS *
124.3 273.5

SPARREVOHN
117.2 SQA
Chan 119

ANCHORAGE
113.15 TED
Chan 78(Y)

3000



AK, 25 JAN 2024 to 21 MAR 2024

AK, 25 JAN 2024 to 21 MAR 2024

(CONTINUED ON FOLLOWING PAGE)

NOTE: DME required.
NOTE: Chart not to scale.

ARRIVAL ROUTE DESCRIPTION

HOMER TRANSITION (HOM.AMOTT4): From over HOM VOR/DME on HOM R-347 to AMOTT. Thence. . . .

KENAI TRANSITION (ENA.AMOTT4): From over ENA VOR/DME on ENA R-323 to AMOTT. Thence. . . .

KODIAK TRANSITION (ODK.AMOTT4): From over ODK VOR/DME on ODK R-005 to KODNE, then on HOM R-176 to HOM VOR/DME, then on HOM R-347 to AMOTT. Thence. . . .

SPARREVOHN TRANSITION (SQA.AMOTT4): From over SQA VOR/DME on SQA R-083 to AKGAS, then on SQA R-083 and ENA R-266 to AYOGU, then on ENA R-266 to NEARR, then on TED R-229 to AMOTT. Thence. . . .

TUCKS TRANSITION (TUCKS.AMOTT4): From over TUCKS on ENA R-220 to IRERE, then on HOM R-347 to AMOTT. Thence. . . .

. . . .from over AMOTT on TED R-229 to cross TED VOR/DME at 3000.
Expect RADAR vectors to final approach course after AMOTT.

AK, 25 JAN 2024 to 21 MAR 2024

AK, 25 JAN 2024 to 21 MAR 2024

ELLAM FIVE ARRIVAL
(ELLAM, ELLAM5) 150CT15

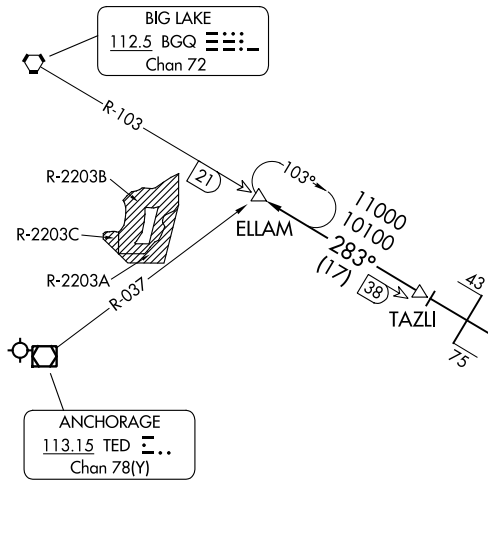
TED STEVENS ANCHORAGE INTL (ANOC)(PANC)
ANCHORAGE, ALASKA

(ELLAM, ELLAM5) 24025
ELLAM FIVE ARRIVAL

TED STEVENS ANCHORAGE INTL (ANOC)(PANC)
ANCHORAGE, ALASKA
AL-1500 (FAA)

ANCHORAGE APP CON
118.6 290.5
ANC/PANC D-ATIS
135.5
MRI/PAMR ATIS
124.25
PAED ATIS *
124.3 273.5

NOTE: DME required.



ARRIVAL ROUTE DESCRIPTION

JOHNSTONE POINT TRANSITION (JOH.ELLAM5): From over JOH VOR/DME on JOH R-287 and BGQ R-103 to TAZLI INT, then on BGQ R-103 to ELLAM INT. Thence

. . . . from over ELLAM INT expect RADAR vectors to final approach course.

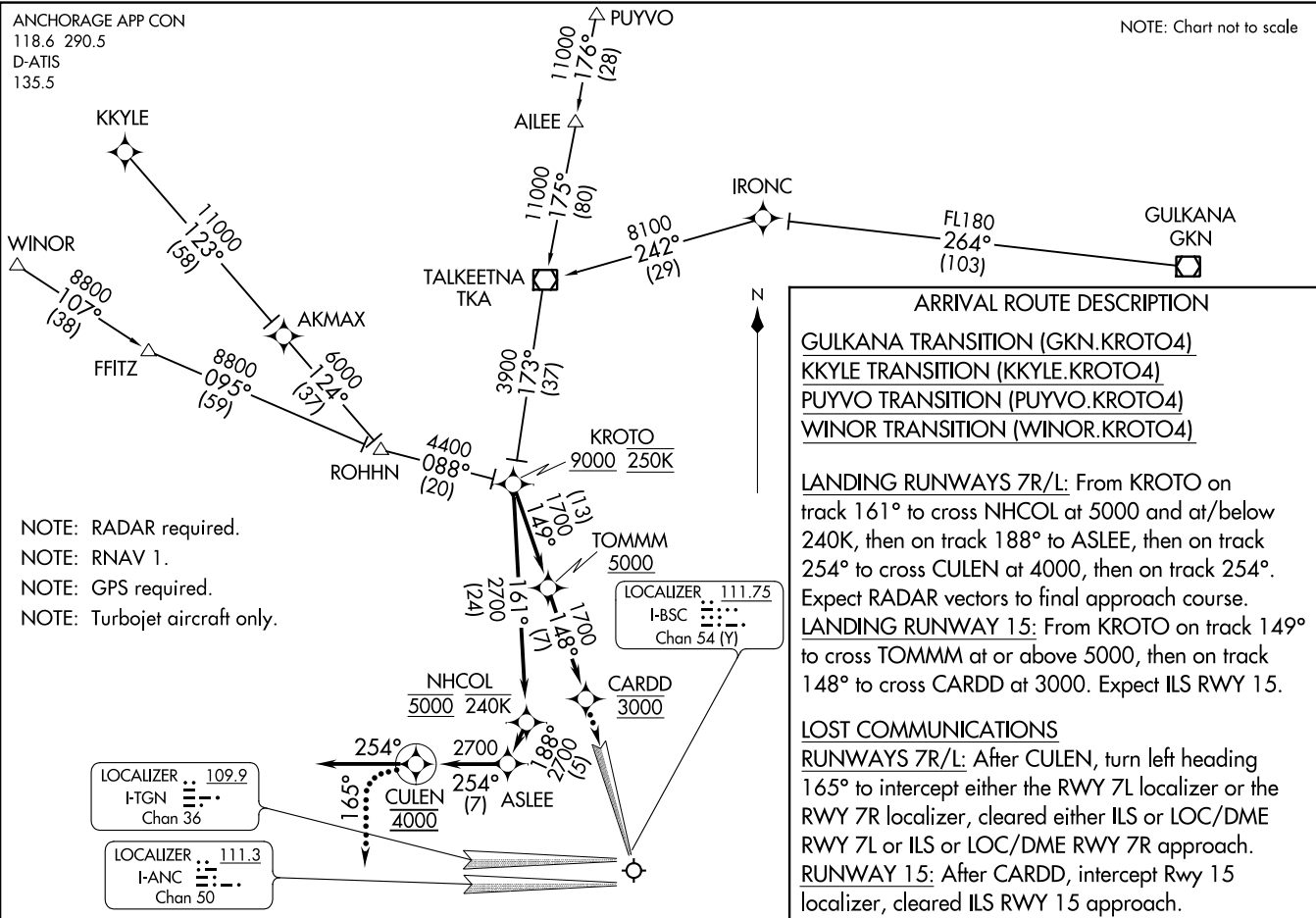
NOTE: Chart not to scale.

KROTO FOUR ARRIVAL (RNAV)
(KROTO.KROTO4) 01FEB18

TED STEVENS ANCHORAGE INTL (ANC)(PANC)
ANCHORAGE, ALASKA

ANCHORAGE APP CON
118.6 290.5
D-ATIS
135.5

NOTE: Chart not to scale



- NOTE: RADAR required.
- NOTE: RNAV 1.
- NOTE: GPS required.
- NOTE: Turbojet aircraft only.

LOCALIZER 109.9
I-TGN
Chan 36

LOCALIZER 111.3
I-ANC
Chan 50

LOCALIZER 111.75
I-BSC
Chan 54 (Y)

KROTO FOUR ARRIVAL (RNAV)
(KROTO.KROTO4) 22363

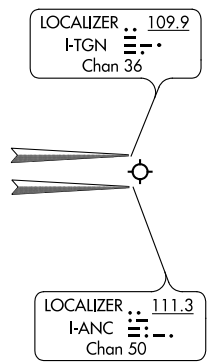
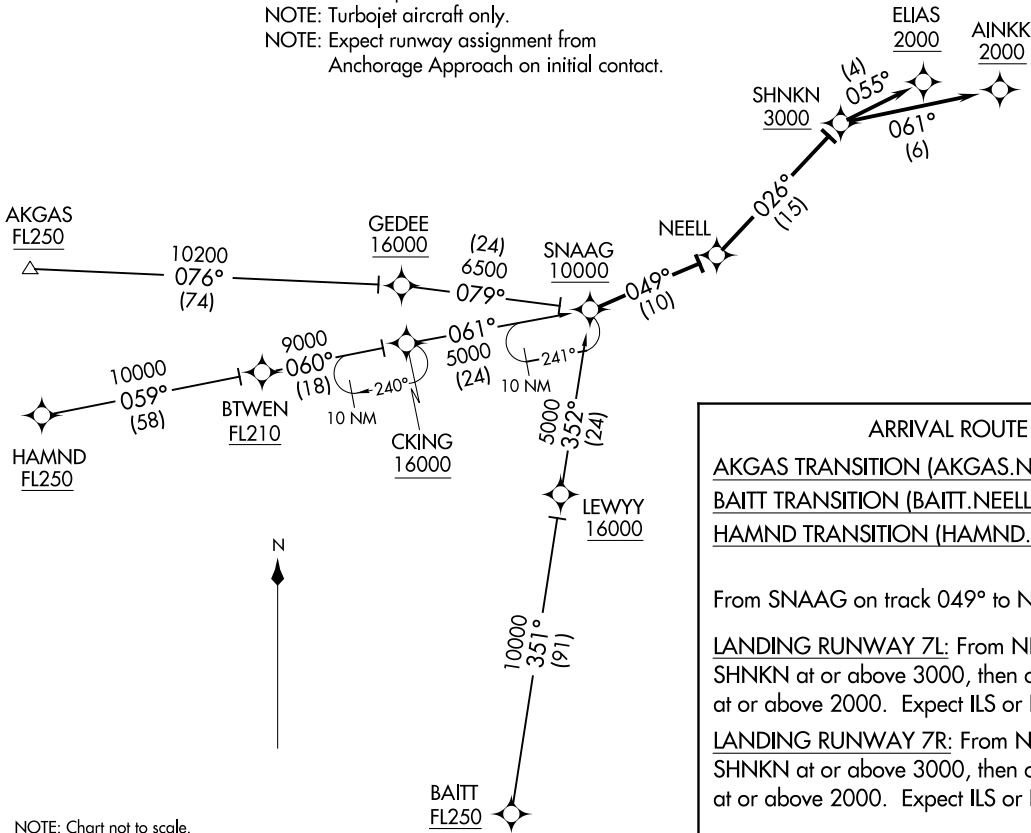
TED STEVENS ANCHORAGE INTL (ANC)(PANC)
ANCHORAGE, ALASKA
A-1500 (FAA)

NEELL SIX ARRIVAL (RNAV)
(SNAAG.NEELL6) 01FEB18

TED STEVENS ANCHORAGE INTL (ANCO)(PANC)
ANCHORAGE, ALASKA

ANCHORAGE APP CON
126.4 270.25
D-ATIS
135.5

NOTE: RNAV 1.
NOTE: GPS required.
NOTE: Turbojet aircraft only.
NOTE: Expect runway assignment from Anchorage Approach on initial contact.



ARRIVAL ROUTE DESCRIPTION

AKGAS TRANSITION (AKGAS.NEELL6)
BAITT TRANSITION (BAITT.NEELL6)
HAMND TRANSITION (HAMND.NEELL6)

From SNAAG on track 049° to NEELL.

LANDING RUNWAY 7L: From NEELL on track 026° to cross SHNKN at or above 3000, then on track 061° to cross AINKK at or above 2000. Expect ILS or LOC/DME RWY 7L approach.

LANDING RUNWAY 7R: From NEELL on track 026° to cross SHNKN at or above 3000, then on track 055° to cross ELIAS at or above 2000. Expect ILS or LOC/DME RWY 7R approach.

NOTE: Chart not to scale.

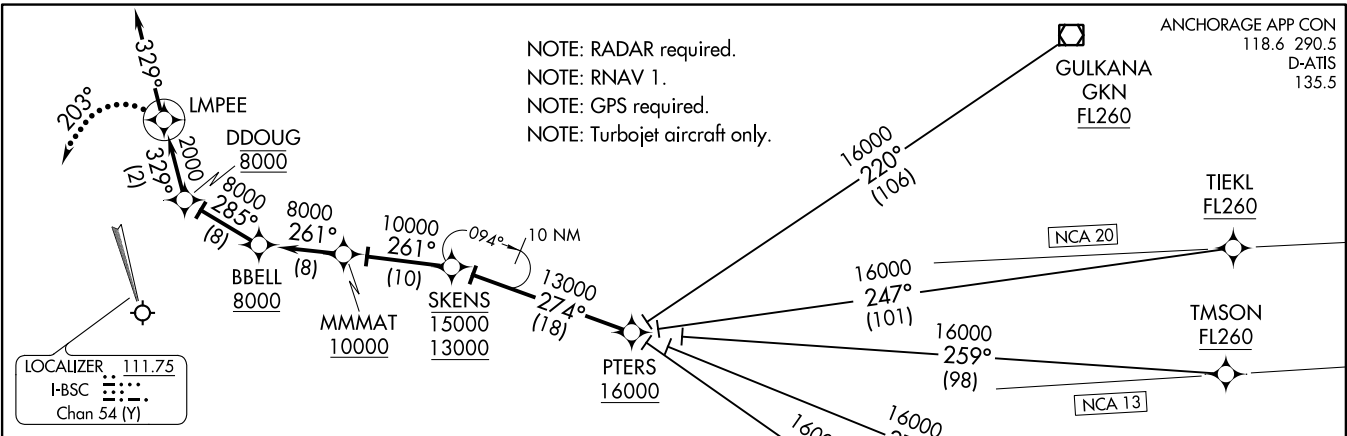
(SNAAG.NEELL6) 18144
NEELL SIX ARRIVAL (RNAV)

TED STEVENS ANCHORAGE INTL (ANCO)(PANC)
ANCHORAGE, ALASKA

PTERS THREE ARRIVAL (RNAV)
(PTERS.PTERS3) 01FEB18

(PTERS.PTERS3) 18032
PTERS THREE ARRIVAL (RNAV)

TED STEVENS ANCHORAGE INTL (AN0)(P)AN0
ANCHORAGE, ALASKA
AL-1500 (FAA)



ARRIVAL ROUTE DESCRIPTION

GULKANA TRANSITION (GKN.PTERS3)
JOHNSTONE POINT TRANSITION (JOH.PTERS3)
MIDDLETON ISLAND TRANSITION (MDO.PTERS3)
REMBY TRANSITION (REMBY.PTERS3)
TIEKL TRANSITION (TIEKL.PTERS3)
TMSON TRANSITION (TMSON.PTERS3)

LANDING RUNWAY 15: From PTERS on track 274° to cross SKENS between 13000 and 15000, then on track 261° to cross MMMAT at or above 10000, then on track 261° to cross BBELL at or above 8000, then on track 285° to cross DDOUG at 8000, then on track 329° to LMPEE, then on track 329°. Expect RADAR vectors to final approach course.

LOST COMMUNICATIONS
 After LMPEE, turn left heading 203°, maintain 3000, intercept the ILS Rwy 15 localizer, cleared ILS RWY 15 approach.



NOTE: Chart not to scale.

TED STEVENS ANCHORAGE INTL (AN0)(P)AN0
ANCHORAGE, ALASKA

TAGER NINE ARRIVAL

ANCHORAGE APP CON
118.6 290.5
D-ATIS
135.5

DME required.
RADAR required.

NENANA
115.8 ENN :
Chan 105

GALENA
114.8 GAL :
Chan 95

MC GRATH
115.5 MCG :
Chan 102

TALKEETNA
116.2 TKA :
Chan 109

BIG LAKE
112.5 BGQ :
Chan 72

ANCHORAGE
113.15 TED :
Chan 78(Y)

5000
Ldg PANC

ARRIVAL ROUTE DESCRIPTION

FFITZ TRANSITION (FFITZ.TAGER9): From over FFITZ on BGQ R-275 to TAGER. Thence . . .

GALENA TRANSITION (GAL.TAGER9): From over GAL VOR/DME on GAL R-124 and TED R-304 to AKMAX, then on TED R-304 to ROHHN, then on BGQ R-275 to TAGER. Thence . . .

MC GRATH TRANSITION (MCG.TAGER9): From over MCG VORTAC on MCG R-102 to FFITZ, then on BGQ R-275 to TAGER. Thence . . .

PUYVO TRANSITION (PUYVO.TAGER9): From over PUYVO on ENN R-171 and TKA R-352 to TKA VOR/DME, then on TKA R-176 to TAGER. Thence . . .

TALKEETNA TRANSITION (TKA.TAGER9): From over TKA VOR/DME on TKA R-176 to TAGER. Thence . . .

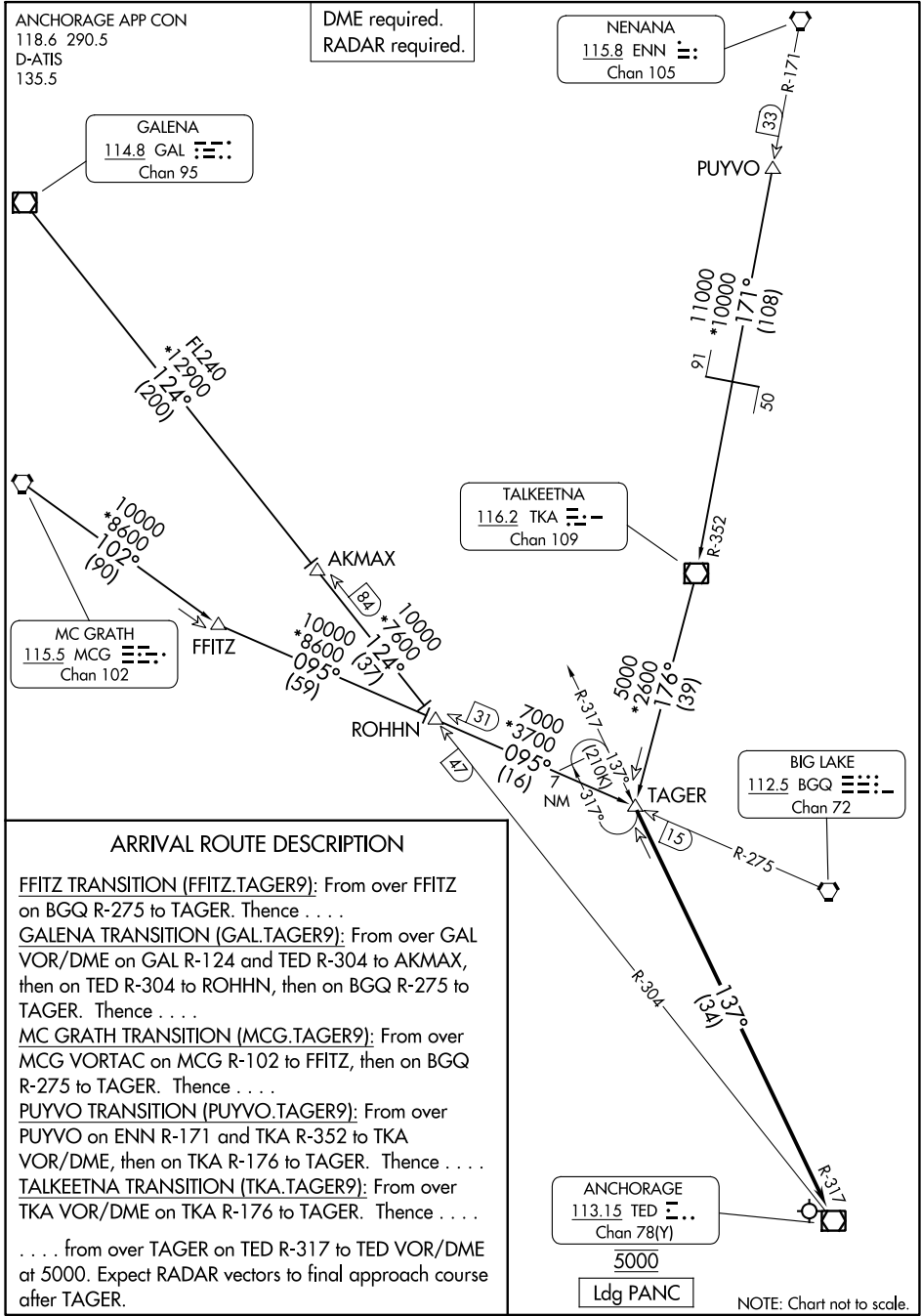
. . . from over TAGER on TED R-317 to TED VOR/DME at 5000. Expect RADAR vectors to final approach course after TAGER.

TAGER NINE ARRIVAL

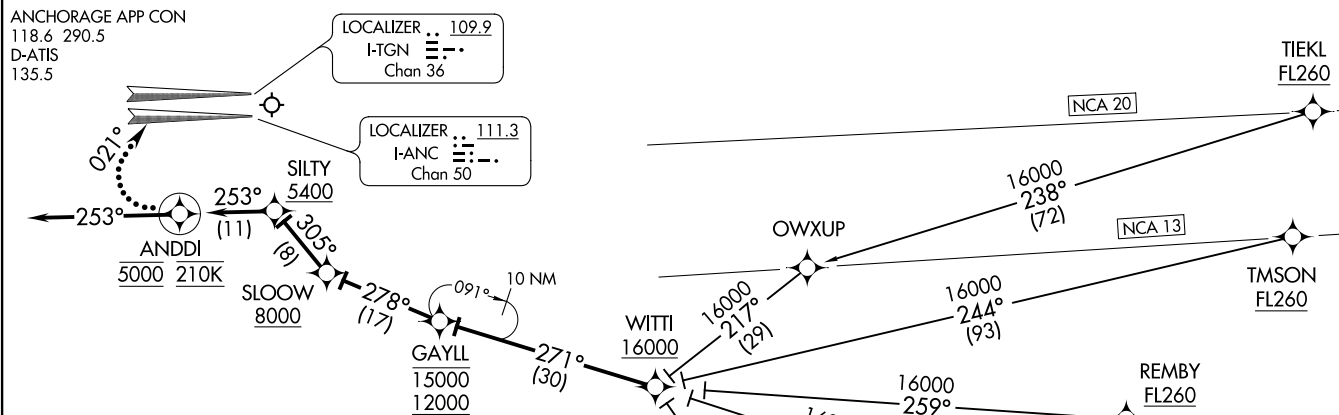
NOTE: Chart not to scale.

AK, 25 JAN 2024 to 21 MAR 2024

AK, 25 JAN 2024 to 21 MAR 2024



WTTT FOUR ARRIVAL (RNAV)
(WTTT.WTTT4) 01 FEB 18



ARRIVAL ROUTE DESCRIPTION

- JOHNSTONE POINT TRANSITION (JOH.WTTT4)
- MIDDLETON ISLAND TRANSITION (MDO.WTTT4)
- REMBY TRANSITION (REMBY.WTTT4)
- TIEKL TRANSITION (TIEKL.WTTT4)
- TMSON TRANSITION (TMSON.WTTT4)

LANDING RUNWAYS 7L/R: From WTTT on track 271° to cross GAYLL between 12000 and 15000, then on track 278° to cross SLOW at or above 8000, then on track 305° to cross SILTY at or above 5400, then on track 253° to cross ANDDI at 5000 and at 210K, then on track 253°. Expect RADAR vectors to final approach course.

LOST COMMUNICATIONS

After ANDDI, turn right heading 021°, intercept the Rwy 7R or Rwy 7L localizer, maintain 3000, proceed on ILS or LOC/DME RWY 7R approach or ILS or LOC/DME RWY 7L approach.



- NOTE: RADAR required after GAYLL.
- NOTE: RNAV 1.
- NOTE: GPS required.
- NOTE: Turbojet aircraft only.
- NOTE: Expect runway assignment from Anchorage Approach on initial contact.

NOTE: Chart not to scale.

TED STEVENS ANCHORAGE INTL (ANC)(P)ANC
ANCHORAGE, ALASKA

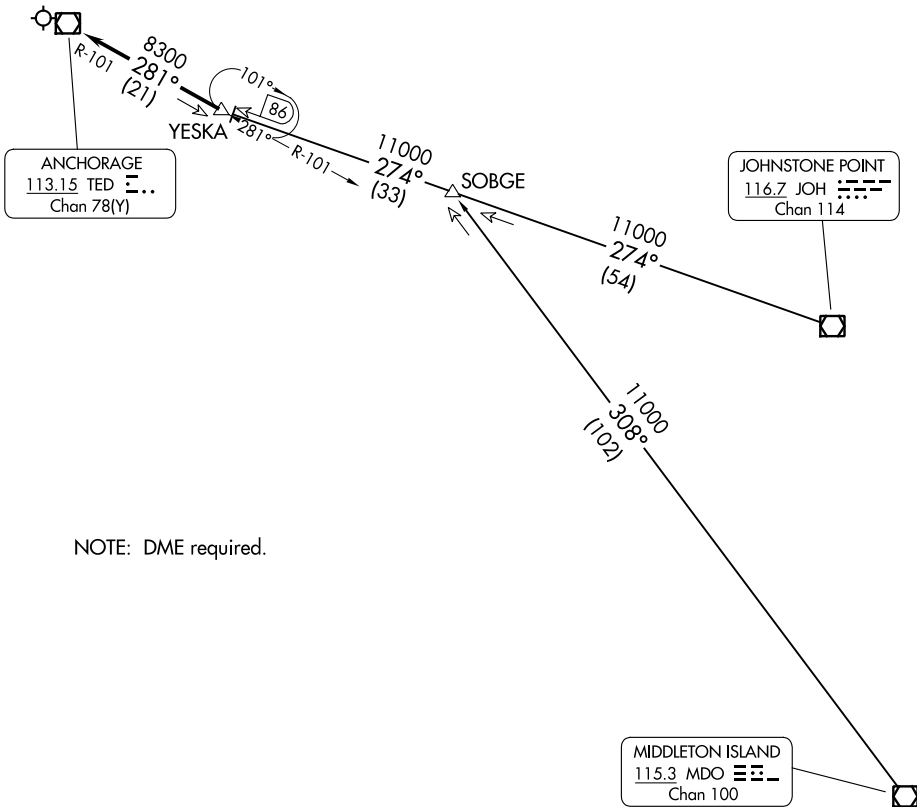
(WTTT.WTTT4) 18032
WTTT FOUR ARRIVAL (RNAV)

TED STEVENS ANCHORAGE INTL (ANC)(P)ANC
ANCHORAGE, ALASKA
AL-1500 (FAA)

(YESKA.YESKA6) 24025
YESKA SIX ARRIVAL

TED STEVENS ANCHORAGE INTL (ANC)(PANC)
 AL-1500 (FAA) ANCHORAGE, ALASKA

ANCHORAGE APP CON
 126.4 270.25
 ANC/PANC D-ATIS
 135.5
 MRI/PAMR ATIS
 124.25
 PAED ATIS *
 124.3 273.5



NOTE: DME required.

NOTE: Chart not to scale.

ARRIVAL ROUTE DESCRIPTION

JOHNSTONE POINT TRANSITION (JOH.YESKA6): From over JOH VOR/DME on JOH R-274 to YESKA. Thence. . . .

MIDDLETON ISLAND TRANSITION (MDO.YESKA6): From over MDO VOR/DME on MDO R-308 to SOBGE, then on JOH R-274 to YESKA. Thence. . . .

. . . .From over YESKA on TED R-101 to TED VOR/DME.
 Expect RADAR vectors to final approach course after YESKA.

YESKA SIX ARRIVAL
 (YESKA.YESKA6) 15OCT15

ANCHORAGE, ALASKA
 TED STEVENS ANCHORAGE INTL (ANC)(PANC)

AK, 25 JAN 2024 to 21 MAR 2024

AK, 25 JAN 2024 to 21 MAR 2024