

LOC/DME I-JDL 109.9 Chan 36	APP CRS 071°	Rwy Idg TDZE 24 Apt Elev 25	8457
---	------------------------	---	-------------

LDA X RWY 8

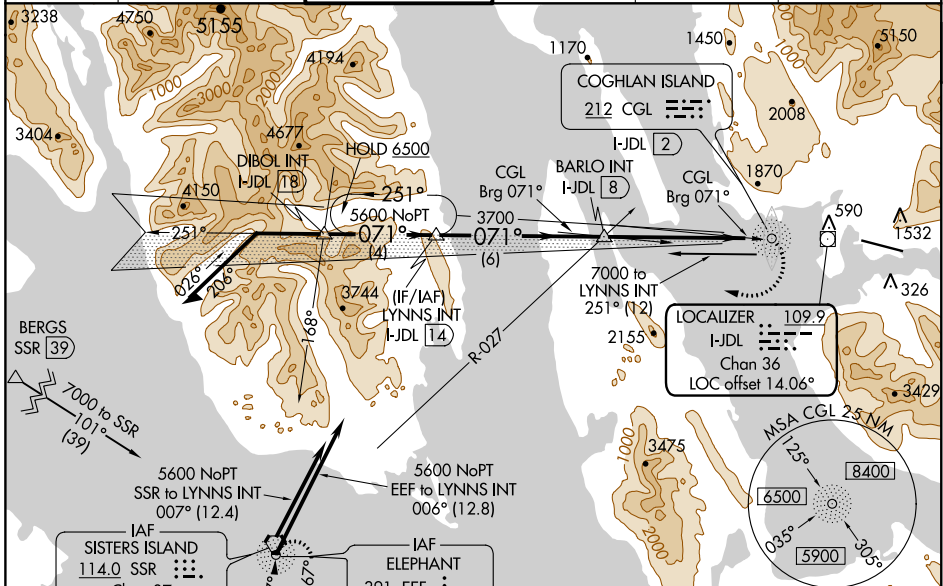
JUNEAU INTL (JNU)(PAJN)

ADF required.

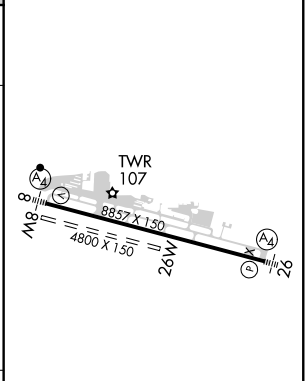
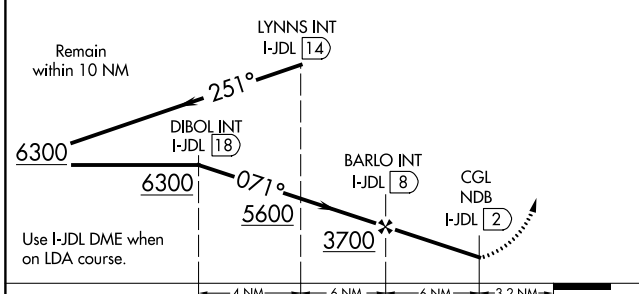
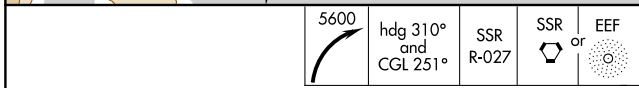
NA Circling to Rwy 26 NA at night. Circling NA north of Rwy 8-26. Rwy 8 helicopter visibility reduction below 1 SM NA. Inop table does not apply. CAUTION: Any go-around after passing MAP will not provide standard obstruction clearance. Circling Cat A night visibility minimum 5 SM, Circling Cat B, C, D night visibility minimum 10 SM. Straight-in Rwy 8 at night, operational VGSI required, remain on or above VGSI glidepath until threshold.

MALSF MISSED APPROACH: Immediate climbing right turn to 5600 on heading 310° and on CGL NDB bearing 251° to intercept SSR VORTAC R-027 direct SSR VORTAC or EEF NDB and hold.

ATIS 135.2	ANCHORAGE CENTER 133.9	JUNEAU TOWER* 118.7 (CTAF) 278.3	GND CON 121.9	CLNC DEL 121.9	JUNEAU RADIO 122.2 243.0
----------------------	----------------------------------	--	-------------------------	--------------------------	------------------------------------



ELEV 25	D	TDZE 24
---------	----------	---------



CATEGORY	A	B	C	D
S-LDA 8	3200-4 3176 (3200-4)			
CIRCLING	3200-4	3175 (3200-4)	3340-4 3315 (3400-4)	3700-4 3675 (3700-4)

REIL Rwy 8 and 26
HIRL Rwy 8-26

AK, 19 MAY 2022 to 14 JUL 2022

AK, 19 MAY 2022 to 14 JUL 2022

APP CRS	Rwy Idg	8457
070°	TDZE	25
	Apt Elev	26

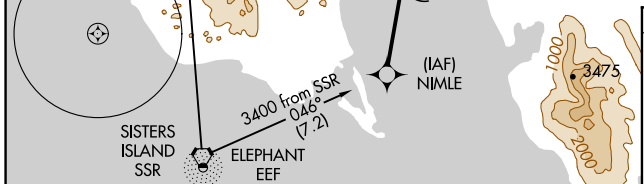
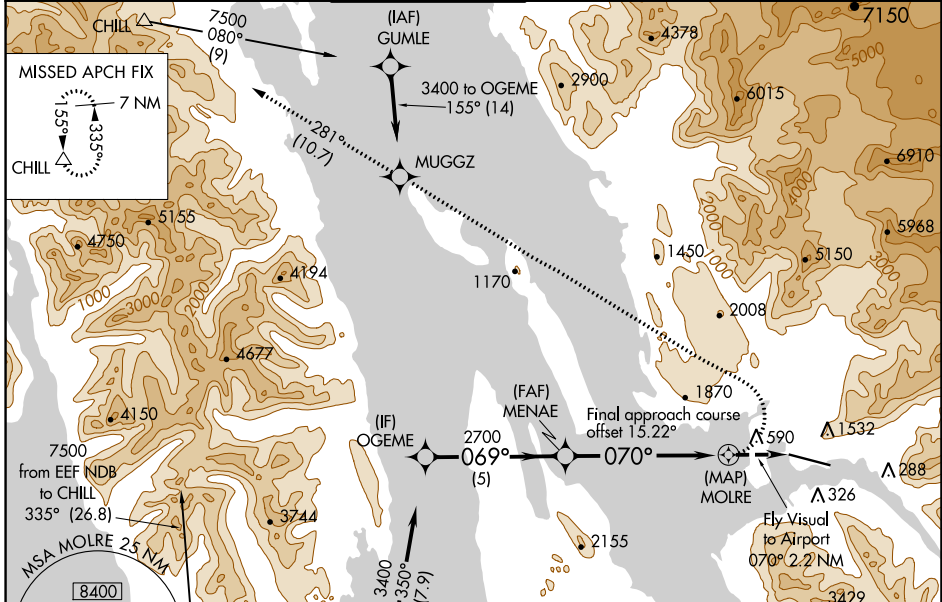
RNAV (GPS) V RWY 8

JUNEAU INTL (JNU)(PAJN)

NA Circling NA at night. When VGSi inop, procedure NA at night. Visibility reduction by helicopters NA. DME/DME RNP-0.3 NA. Lead-in lights not aligned with final approach course. For inop Lead-in lights, increase visibility to 4 NM. Circling NA north of Rwy 8-26.
 * Missed approach requires minimum climb of 363 feet per NM to 3200.

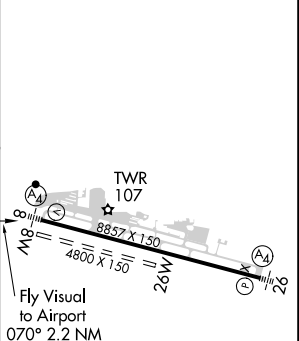
MALSF MISSED APPROACH: Climbing left turn to 9000 direct MUGGZ and on track 281° to CHILL and hold, continue climb-in-hold to 9000.

ATIS	ANCHORAGE CENTER	JUNEAU TOWER*	GND CON	CLNC DEL	JUNEAU RADIO
135.2	133.9	118.7 (CTAF) 278.3	121.9	121.9	122.2 243.0



ELEV 26	TDZE 25
---------	---------

OGEME	VGSi and descent angles not coincident (VGSi Angle 3.50/TCH 38).		9000	MUGGZ	tr 281°	CHILL
3400	069°	MENAE	2700	070°	MOLRE	Fly Visual to Airport 070° 2.2 NM
5 NM		5.8 NM		2.2 NM		



CATEGORY	A	B	C	D
LNAV MDA*	1880-2	1855 (1900-2)		NA
LNAV MDA	2340-3	2315 (2400-3)		NA
CIRCLING	2340-3	2314 (2400-3)		NA

RLLS Rwy 8
 REIL Rwy 8 and 26
 HIRL Rwy 8-26

AK, 19 MAY 2022 to 14 JUL 2022

AK, 19 MAY 2022 to 14 JUL 2022