

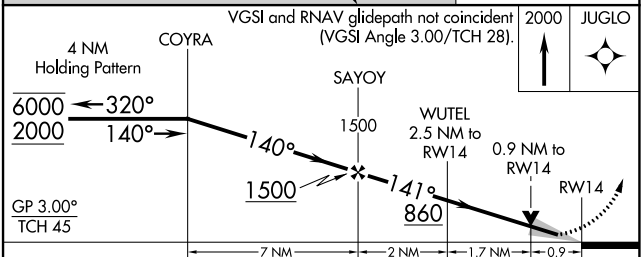
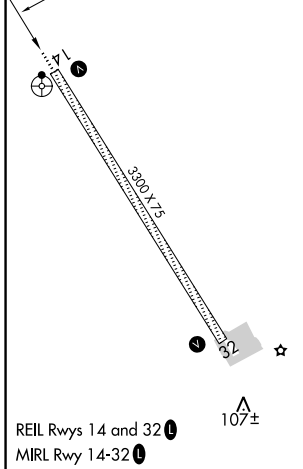
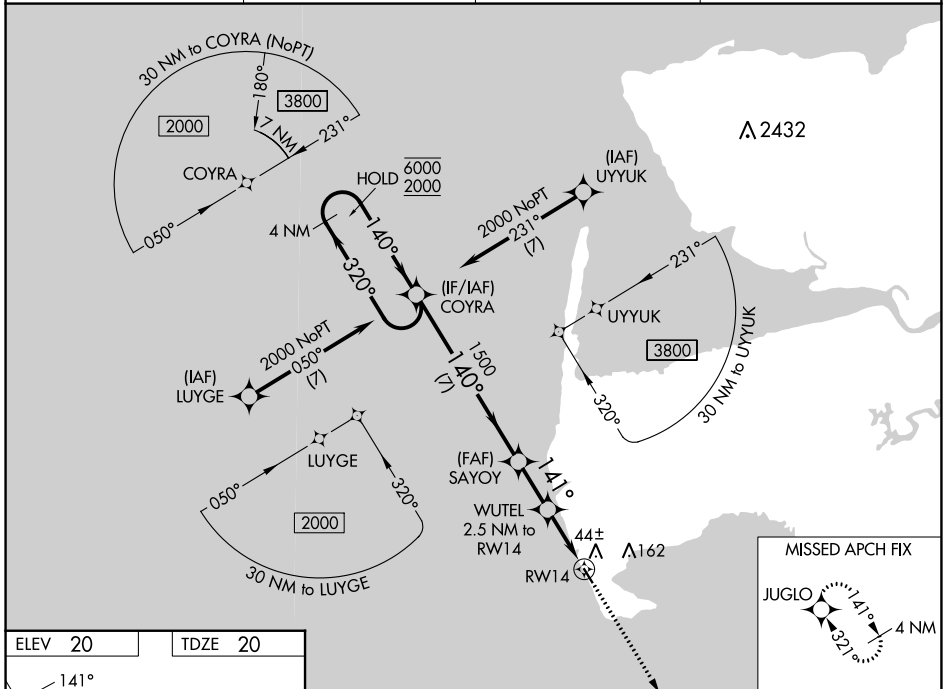
WAAS CH 82224 W14A	APP CRS 141°	Rwy Idg 3300 TDZE 20 Apt Elev 20
----------------------------------------	------------------------	-------------------------------------------------------------

RNAV (GPS) RWY 14

HOOPER BAY (HPB) (PAHP)

RNP APCH - GPS.	MISSED APPROACH: Climb to 2000 direct JUGLO and hold.
Circling Rwy 32 NA at night. For uncompensated Baro-VNAV systems, LNAV/VNAV NA below -19°C or above 54°C.	

AWOS-3P 135.1	ANCHORAGE CENTER 124.5	KENAI RADIO 122.4	CTAF 123.0
-------------------------	----------------------------------	-----------------------------	----------------------



CATEGORY	A	B	C	D
LPV DA		220-1	200 (200-1)	
LNAV/VNAV DA		270-1	250 (300-1)	
LNAV MDA		300-1	280 (300-1)	
CIRCLING	400-1 380 (400-1)	480-1 460 (500-1)	480-1½ 460 (500-1½)	580-2 560 (600-2)

AK, 25 JAN 2024 to 21 MAR 2024

AK, 25 JAN 2024 to 21 MAR 2024

WAAS CH 65725 W32A	APP CRS 321°	Rwy Idg 3300 TDZE 20 Apt Elev 20
----------------------------------------	------------------------	-------------------------------------------------------------

RNAV (GPS) RWY 32

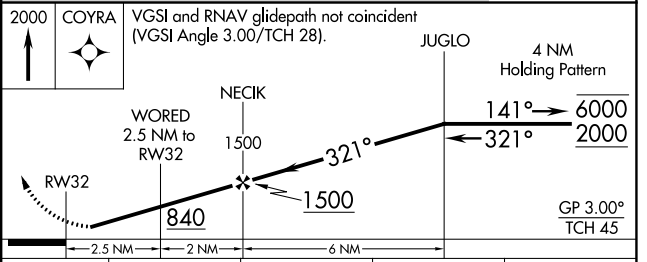
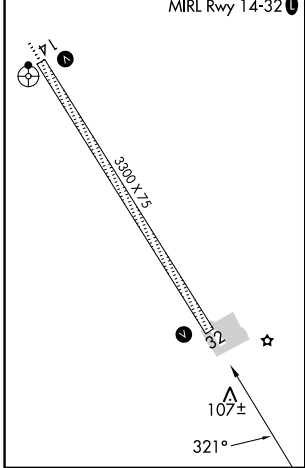
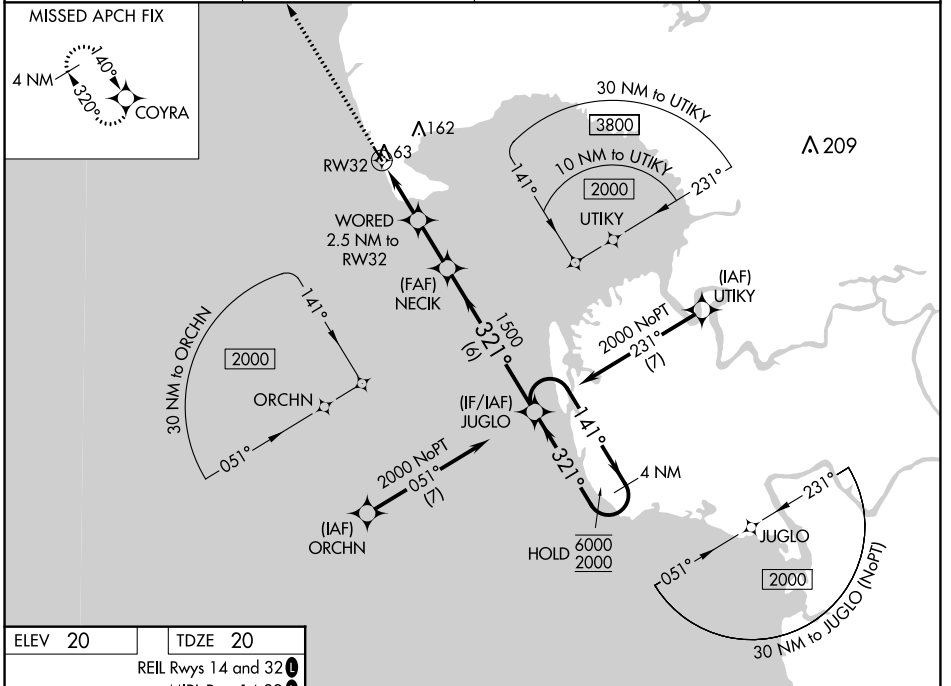
HOOPER BAY (HPB) (PAHP)

RNP APCH - GPS.

▼ Rwy 32 helicopter visibility reduction below 1 SM NA. For uncompensated Baro-VNAV systems, LNAV/VNAV NA below -19°C or above 54°C.
 ▲ Straight-in Rwy 32 NA at night, Circling Rwy 32 NA at night.

MISSED APPROACH: Climb to 2000 direct COYRA and hold.

AWOS-3P 135.1	ANCHORAGE CENTER 124.5	KENAI RADIO 122.4	CTAF 123.0
-------------------------	----------------------------------	-----------------------------	----------------------



CATEGORY	A	B	C	D
LPV DA		270-1	250 (300-1)	
LNAV/VNAV DA		270-1	250 (300-1)	
LNAV MDA		320-1	300 (300-1)	
☑ CIRCLING	400-1 380 (400-1)	480-1 460 (500-1)	480-1½ 460 (500-1½)	580-2 560 (600-2)

AK, 25 JAN 2024 to 21 MAR 2024

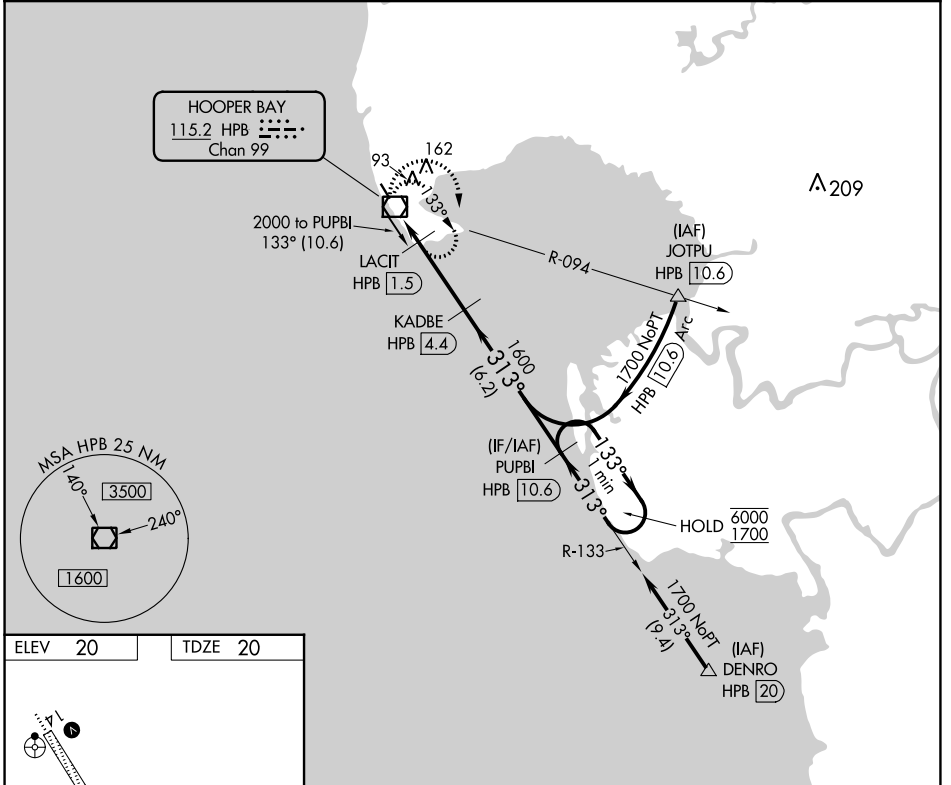
AK, 25 JAN 2024 to 21 MAR 2024

VOR/DME HPB 115.2 Chan 99	APP CRS 313°	Rwy Idg TDZE Apt Elev	3300 20 20
-----------------------------------------------	------------------------	-----------------------------	---------------------------------------

VOR RWY 32
HOOPER BAY (HPB) (PAHP)

DME required.	MISSED APPROACH: Climbing right turn to 2000 in HPB VOR/DME holding pattern.
<p>▼ Rwy 32 helicopter visibility reduction below 1 SM NA.</p> <p>▲ Straight-in Rwy 32 NA at night, Circling Rwy 32 NA at night.</p>	

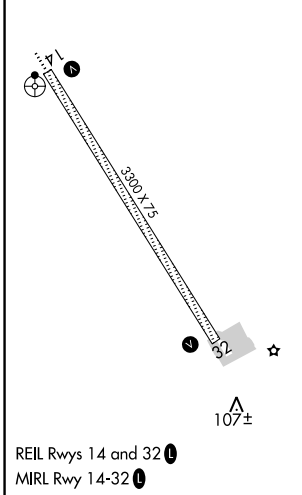
AWOS-3P 135.1	ANCHORAGE CENTER 124.5	KENAI RADIO 122.4	CTAF 123.0
-------------------------	----------------------------------	-----------------------------	----------------------



AK, 25 JAN 2024 to 21 MAR 2024

AK, 25 JAN 2024 to 21 MAR 2024

ELEV 20	TDZE 20
---------	---------



2000 HPB	VGSi and descent angles not coincident (VGSi Angle 3.00/TCH 28).		PUPBI HPB 10.6	One Minute Holding Pattern
LACIT HPB 1.5	KADBE HPB 4.4	HPB VOR/DME	HPB 1600	HPB 6000 / 1700
0.4	1.5 NM	2.9 NM	6.2 NM	
CATEGORY	A	B	C	D
S-32	420-1	400 (400-1)	420-1 1/8	400 (400-1 1/8)
CIRCLING	420-1	480-1	480-1 1/2	580-2
	400 (400-1)	460 (500-1)	460 (500-1 1/2)	560 (600-2)