

APP CRS	Rwy Idg	<b>4001</b>
<b>230°</b>	TDZE	<b>448</b>
	Apt Elev	<b>448</b>

# RNAV (GPS) RWY 23

NIKOLAI (F/SP)(P/AFS)

RNP APCH.

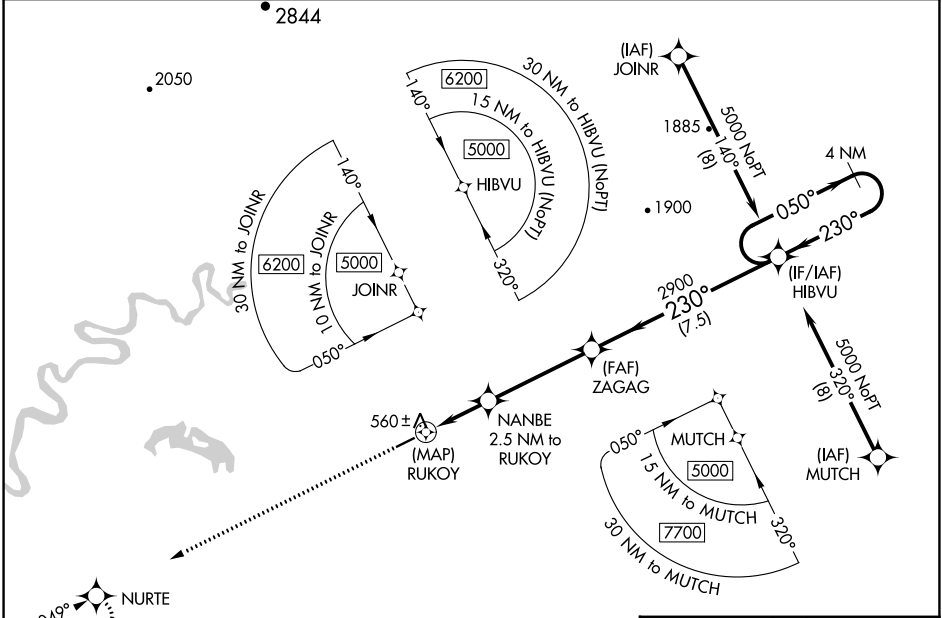
**▼** Rwy 23 helicopter visibility reduction below 3/4 SM NA.

MISSED APPROACH: Climb to 3000 direct NURTE and hold.

AWOS-3P  
**118.325**

ANCHORAGE CENTER  
**128.1 353.8**

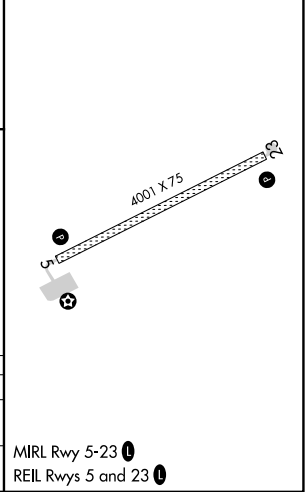
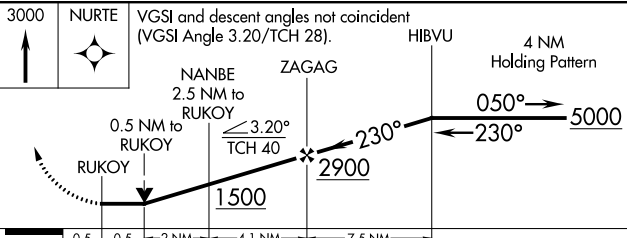
CTAF  
**122.8**



AK, 25 JAN 2024 to 21 MAR 2024

AK, 25 JAN 2024 to 21 MAR 2024

ELEV 448	TDZE 448
----------	----------




CATEGORY	A	B	C	D
LNAV MDA	820-1 372 (400-1)			
CIRCLING	860-1	900-1	900-1½	1000-2
	412 (500-1)	452 (500-1)	452 (500-1½)	552 (600-2)

MRL Rwy 5-23  
REIL Rwy 5 and 23


APP CRS	Rwy Idg	<b>4001</b>
<b>049°</b>	TDZE	<b>448</b>
	Apt Elev	<b>448</b>

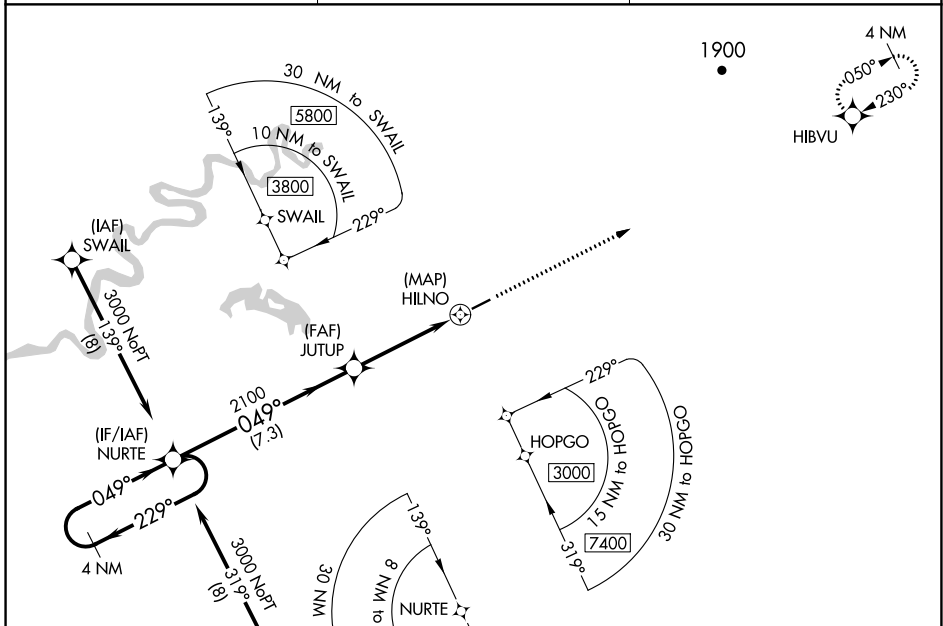
# RNAV (GPS) RWY 5

NIKOLAI (F/SP)(P/AFS)

RNP APCH.  
 Rwy 5 helicopter visibility reduction below 3/4 SM NA.

MISSED APPROACH: Climb to 5000 direct HIBVU and hold, continue climb-in-hold to 5000.

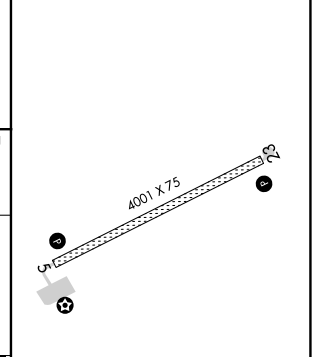
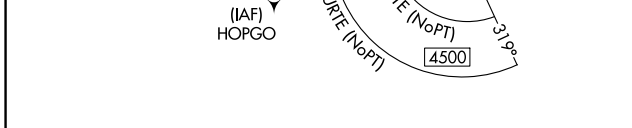
AWOS-3P <b>118.325</b>	ANCHORAGE CENTER <b>128.1 353.8</b>	CTAF <b>122.8</b> 
---------------------------	--	--




AK, 25 JAN 2024 to 21 MAR 2024


AK, 25 JAN 2024 to 21 MAR 2024

ELEV 448	TDZE 448
----------	----------



4 NM Holding Pattern	NURTE	JUTUP	HILNO	HILNO	HIBVU
3000	2100	2100	2100	5000	HIBVU
229°	049°	049°	3.20°	3.20°	
7.3 NM	3.5 NM	0.8 NM	0.5 NM		

CATEGORY	A	B	C	D
LNVA MDA	900-1 452 (500-1)		900-1 3/8 452 (500-1 3/8)	
 CIRCLING	900-1 452 (500-1)		900-1 1/2 452 (500-1 1/2)	1000-2 552 (600-2)

MIRL Rwy 5-23   
 REIL Rws 5 and 23 