

(DRRLL4.DRRLL) 21336

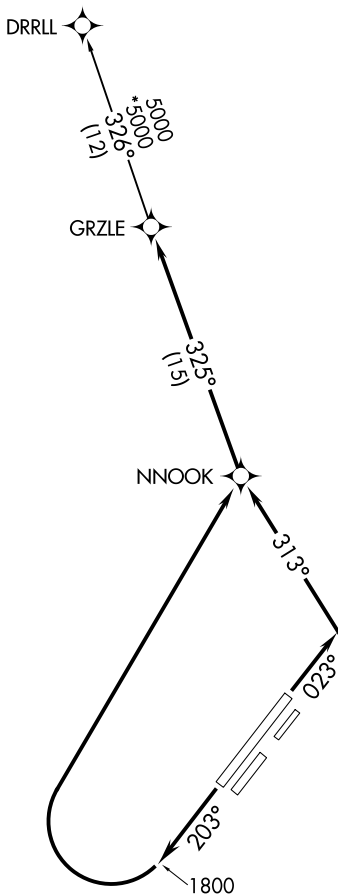
DRRLL FOUR DEPARTURE (RNAV)

AL-1234 (FAA)

FAIRBANKS INTL (FAI) (PAFA)
FAIRBANKS, ALASKA

ATIS
124.4
CLNC DEL
127.6
GND CON
121.9
FAIRBANKS TOWER
118.3 257.8
FAIRBANKS DEP CON
125.35 363.2

**TOP ALTITUDE:
ASSIGNED BY ATC**



NOTE: GPS required.
NOTE: RNAV 1.

TAKEOFF MINIMUMS

Rwys 2, 2R, 2W, 20, 20L, 20W: NA - Air Traffic.

Rwy 2L: Standard with minimum climb of 290' per NM to 3100.

Rwy 20R: Standard with minimum climb of 270' per NM to 3200.

NOTE: Chart not to scale.



DEPARTURE ROUTE DESCRIPTION

TAKEOFF RUNWAY 2L: Climb heading 023° to intercept course 313° to NNOOK, then on track 325° to GRZLE, thence. . . .

TAKEOFF RUNWAY 20R: Climb heading 203° to 1800, then climbing right turn direct NNOOK, then on track 325° to GRZLE, thence. . . .

. . . .on DRRLL transition, maintain ATC assigned altitude, expect filed altitude ten minutes after departure.

DRRLL TRANSITION (DRRLL4.DRRLL)

DRRLL FOUR DEPARTURE (RNAV)

(DRRLL4.DRRLL) 02DEC21

FAIRBANKS, ALASKA
FAIRBANKS INTL (FAI) (PAFA)

AK, 25 JAN 2024 to 21 MAR 2024

AK, 25 JAN 2024 to 21 MAR 2024

GALENA EIGHT DEPARTURE
(GLEEN8, GLEEN) 10AUG23

FAIRBANKS, ALASKA
FAIRBANKS INTL (FAD) (PAFA)



DEPARTURE ROUTE DESCRIPTION

TAKEOFF RUNWAYS 2L/R: Climb on heading 038° to 2200,
then left turn direct FAI VORTAC, thence . . .

TAKEOFF RUNWAYS 20L/R: Climb on heading 203° to 2000,
then right turn heading 277°, thence . . .

. . . intercept FAI R-242 to ENN R-255, then on ENN R-255 and GAL R-077
to GAL VOR/DME, then continue climb on assigned route and altitude.

**TOP ALTITUDE:
ASSIGNED BY ATC**

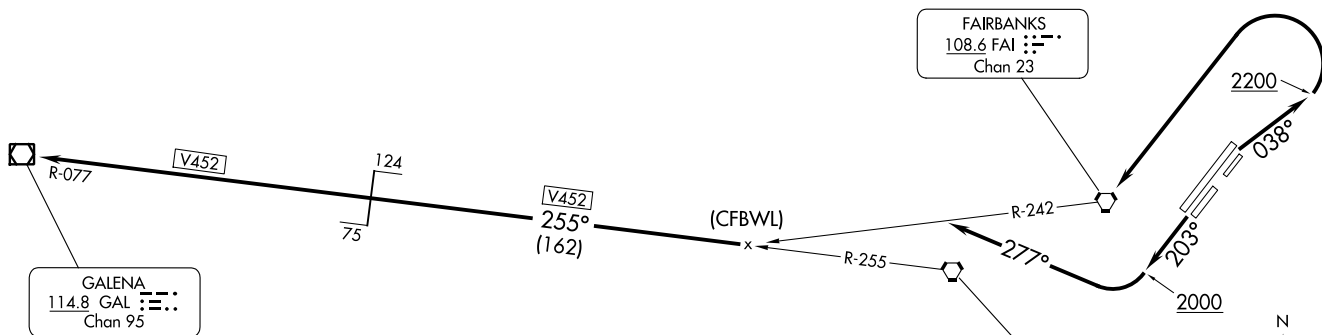
DME required.

FAIRBANKS DEP CON
125.35 363.2

(GLEEN8, GLEEN) 23278
GALENA EIGHT DEPARTURE

AL-1234 (FAA)

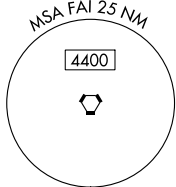
FAIRBANKS INTL (FAD) (PAFA)
FAIRBANKS, ALASKA



GALENA
114.8 GAL
Chan 95

FAIRBANKS
108.6 FAI
Chan 23

NENANA
115.8 ENN
Chan 105



TAKEOFF MINIMUMS

Rwys 2, 2W, 20, 20W: NA- Air Traffic

Rwys 2L/R: Standard with minimum
climb of 230' per NM to 2200.

Rwys 20L/R: Standard.

NOTE: Chart not to scale.

(MKNLY4.TKA) 23278

MCKINLEY FOUR DEPARTURE

AL-1234 (FAA)

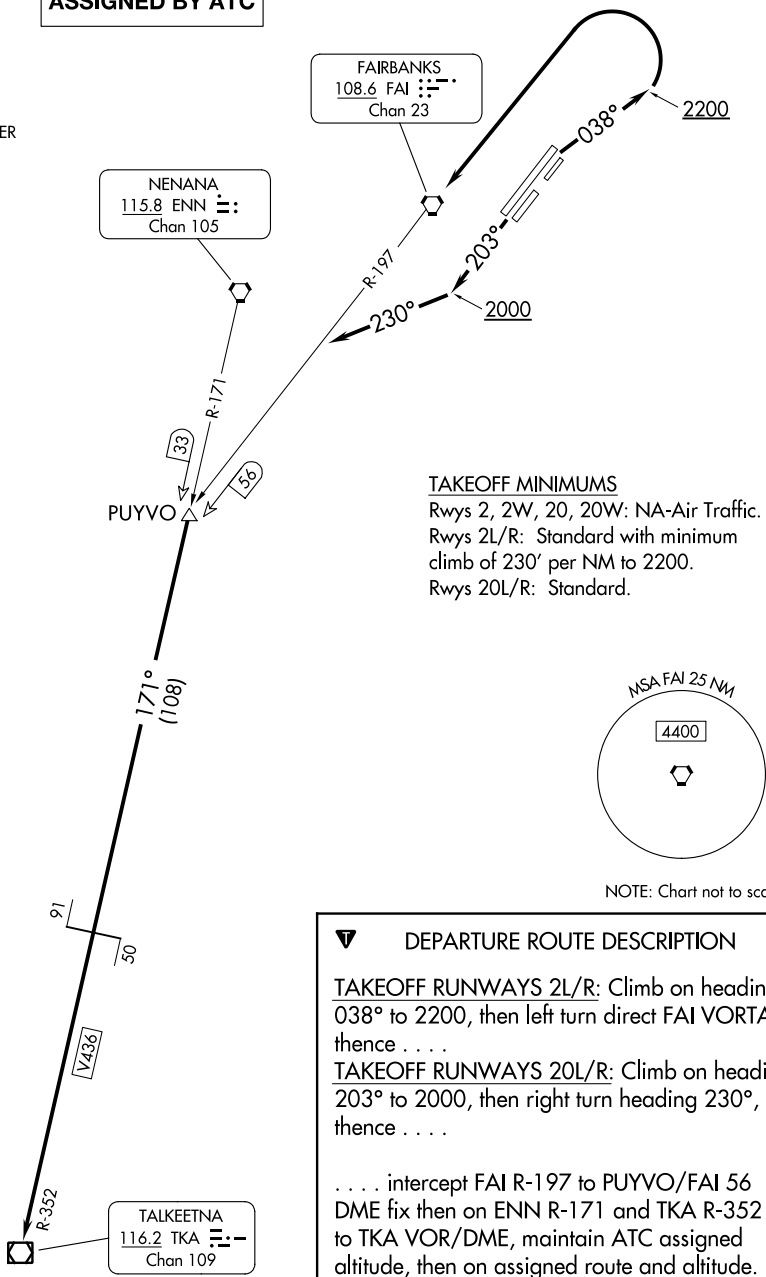
FAIRBANKS INTL (FAI) (PAFA)
FAIRBANKS, ALASKA

FAIRBANKS DEP CON
125.35 363.2
ATIS
124.4
CLNC DEL
127.6
GND CON
121.9
FAIRBANKS TOWER
118.3 257.8

**TOP ALTITUDE:
ASSIGNED BY ATC**

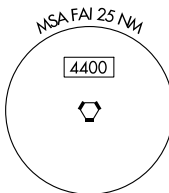
RADAR required. DME required.

AK, 25 JAN 2024 to 21 MAR 2024



TAKEOFF MINIMUMS

Rwys 2, 2W, 20, 20W: NA-Air Traffic.
Rwys 2L/R: Standard with minimum
climb of 230' per NM to 2200.
Rwys 20L/R: Standard.



NOTE: Chart not to scale.

DEPARTURE ROUTE DESCRIPTION

TAKEOFF RUNWAYS 2L/R: Climb on heading 038° to 2200, then left turn direct FAI VORTAC, thence

TAKEOFF RUNWAYS 20L/R: Climb on heading 203° to 2000, then right turn heading 230°, thence

. . . . intercept FAI R-197 to PUYVO/FAI 56 DME fix then on ENN R-171 and TKA R-352 to TKA VOR/DME, maintain ATC assigned altitude, then on assigned route and altitude.

AK, 25 JAN 2024 to 21 MAR 2024

MCKINLEY FOUR DEPARTURE

(MKNLY4.TKA) 10AUG23

FAIRBANKS, ALASKA
FAIRBANKS INTL (FAI) (PAFA)

(PUYVO5.PUYVO) 23222

PUYVO FIVE DEPARTURE (RNAV)

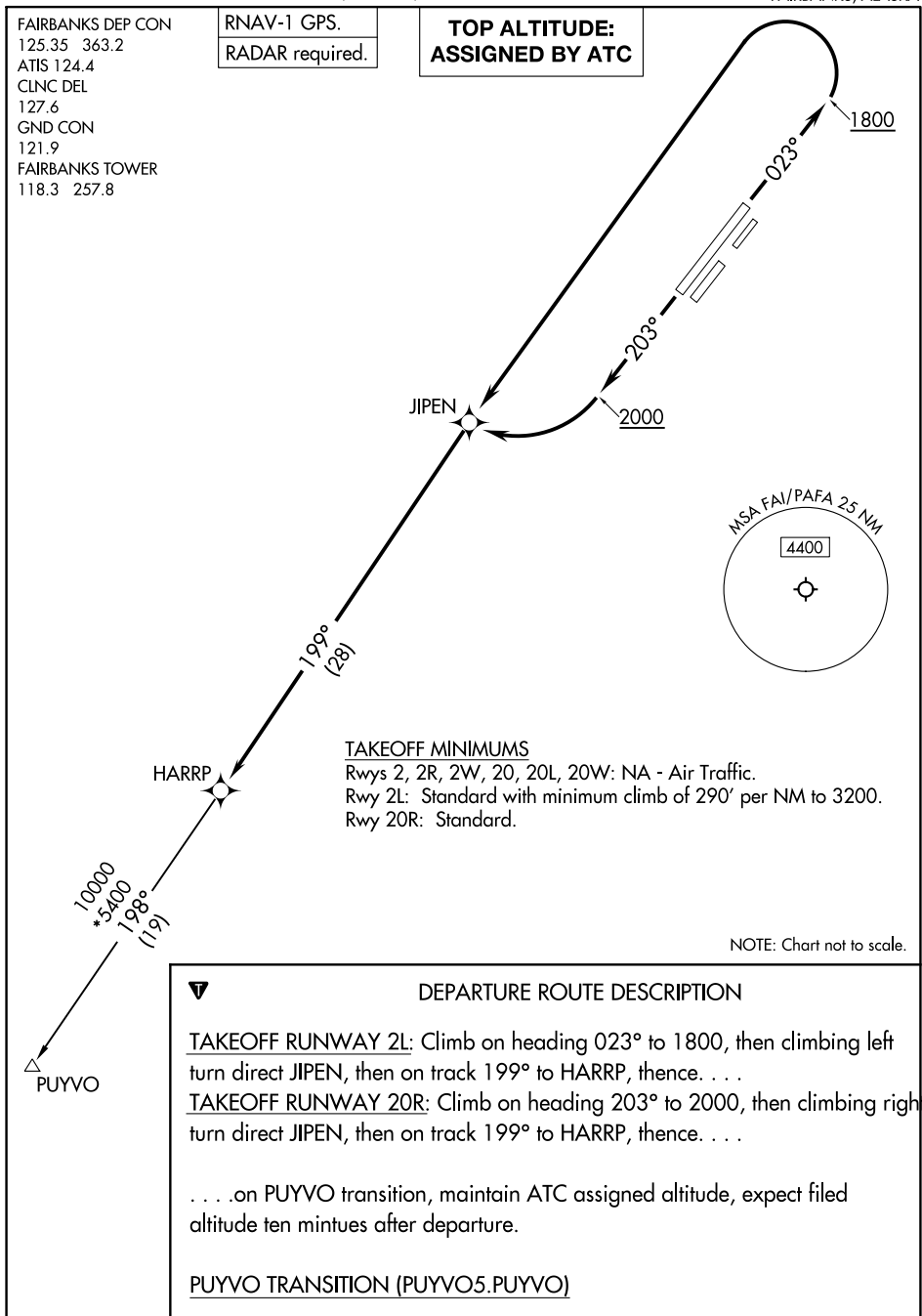
AL-1234 (FAA)

FAIRBANKS INTL (FAI) (PAFA)
FAIRBANKS, ALASKA

FAIRBANKS DEP CON
125.35 363.2
ATIS 124.4
CLNC DEL
127.6
GND CON
121.9
FAIRBANKS TOWER
118.3 257.8

RNAV-1 GPS.
RADAR required.

**TOP ALTITUDE:
ASSIGNED BY ATC**



AK, 25 JAN 2024 to 21 MAR 2024

AK, 25 JAN 2024 to 21 MAR 2024

TAKEOFF MINIMUMS
Rwys 2, 2R, 2W, 20, 20L, 20W: NA - Air Traffic.
Rwy 2L: Standard with minimum climb of 290' per NM to 3200.
Rwy 20R: Standard.

NOTE: Chart not to scale.

DEPARTURE ROUTE DESCRIPTION

TAKEOFF RUNWAY 2L: Climb on heading 023° to 1800, then climbing left turn direct JIPEN, then on track 199° to HARRP, thence. . .

TAKEOFF RUNWAY 20R: Climb on heading 203° to 2000, then climbing right turn direct JIPEN, then on track 199° to HARRP, thence. . .

. . . on PUYVO transition, maintain ATC assigned altitude, expect filed altitude ten minutes after departure.

PUYVO TRANSITION (PUYVO5.PUYVO)

PUYVO FIVE DEPARTURE (RNAV)
(PUYVO5.PUYVO) 10AUG23

FAIRBANKS, ALASKA
FAIRBANKS INTL (FAI) (PAFA)

(RDFLG5.RDFLG) 23222

RDFLG FIVE DEPARTURE (RNAV)

AL-1234 (FAA)

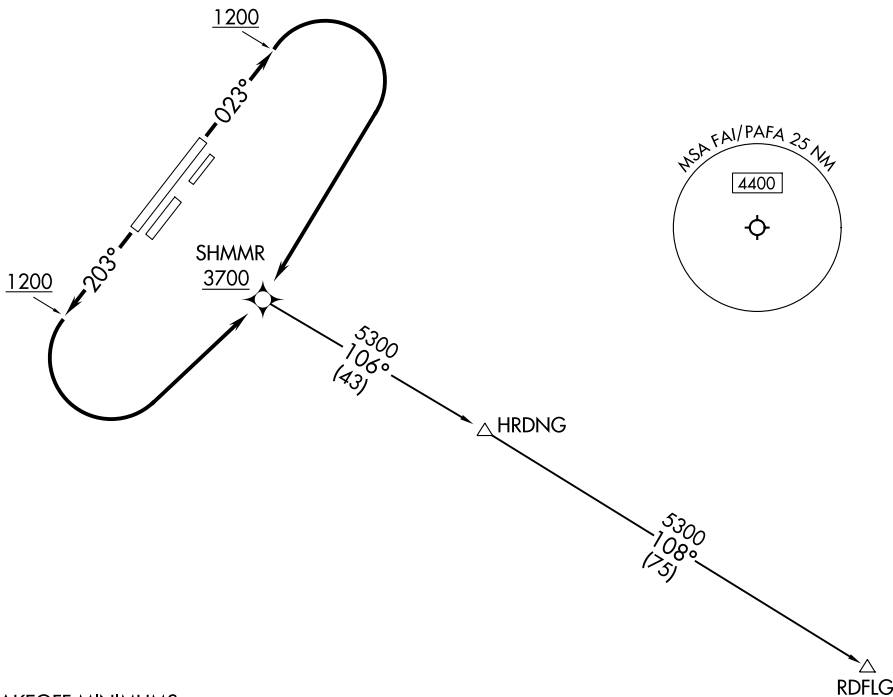
FAIRBANKS INTL (FAI) (PAFA)

FAIRBANKS, ALASKA

**TOP ALTITUDE:
10000**

RNAV 1 - GPS.

FAIRBANKS DEP CON
125.35 363.2
ATIS 124.4
CLNC DEL
127.6
GND CON
121.9
FAIRBANKS TOWER
118.3 257.8



TAKEOFF MINIMUMS

Rwys 2, 2R, 2W, 20, 20L, 20W: NA - Air Traffic.

Rwy 20R: Standard.

Rwy 2L: Standard with minimum climb of 230' per NM to 1500.

NOTE: Chart not to scale.



DEPARTURE ROUTE DESCRIPTION

TAKEOFF RUNWAY 2L: Climb on heading 023° to 1200, then climbing right turn direct SHMMR, cross SHMMR at or above 3700, thence. . . .

TAKEOFF RUNWAY 20R: Climb on heading 203° to 1200, then climbing left turn direct SHMMR, cross SHMMR at or above 3700, thence. . . .

. . . .on RDLFG transition. Climb and maintain 10000. Expect 17000 ten minutes after departure.

RDFLG TRANSITION (RDFLG5.RDFLG)

RDFLG FIVE DEPARTURE (RNAV)

(RDFLG5.RDFLG) 10AUG23

FAIRBANKS, ALASKA

FAIRBANKS INTL (FAI) (PAFA)

AK, 25 JAN 2024 to 21 MAR 2024

AK, 25 JAN 2024 to 21 MAR 2024