

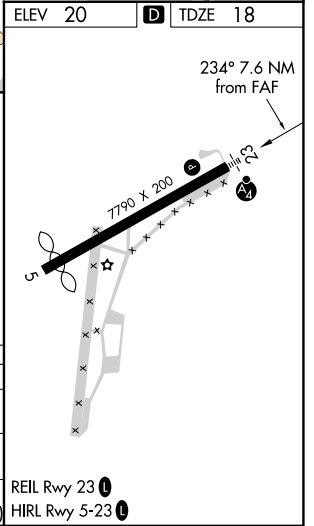
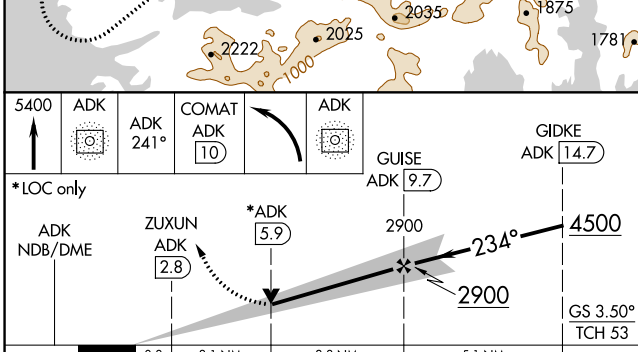
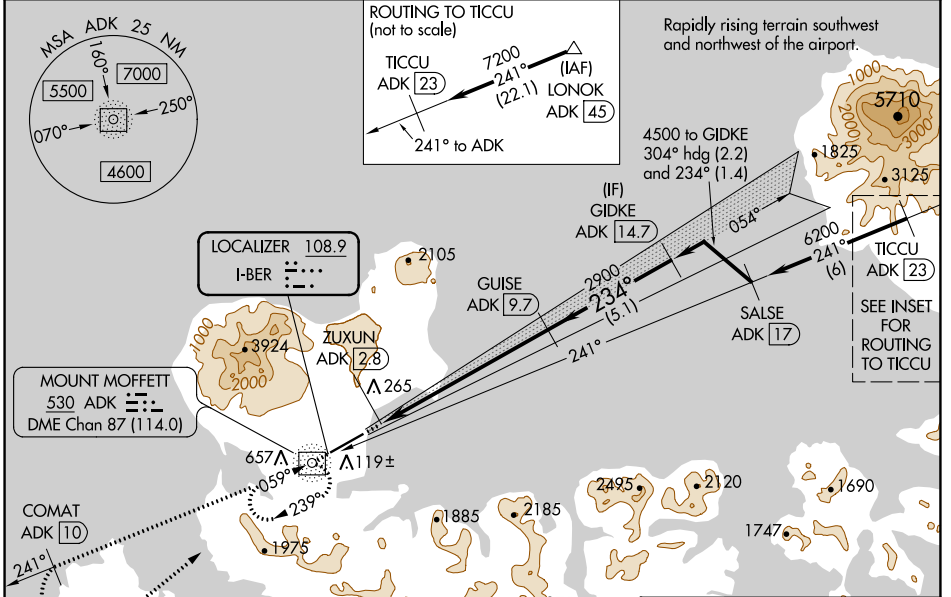
LOC I-BER	APP CRS	Rwy ldg	6190
108.9	234°	TDZE	18
		Apt Elev	20

ILS Y or LOC Y RWY 23

ADAK (ADK) (PADK)

ADF and DME required.		MALS 	MISSED APPROACH: Climb to 5400 direct ADK NDB/DME and on the 241° bearing from ADK NDB/DME to COMAT/ADK 10 DME and left turn direct ADK NDB/DME and hold.
Circling NA at night. Circling NA northwest of Rwy 5-23. Rwy 23 helicopter visibility reduction below 3/4 SM NA. DME from ADK NDB/DME. Simultaneous reception of I-BER and ADK DME required. Cat E for USAF/USN use only.			

AWOS-3P 134.5	ANCHORAGE CENTER 126.4 254.3	CTAF 122.9 0
-------------------------	----------------------------------------	------------------------



CATEGORY	A	B	C	D	E
S-ILS 23	1572-5 1554 (1600-5)				
S-LOC 23	1520-1 1/4 1502 (1500-1 1/4)	1520-1 1/2 1502 (1500-1 1/2)	1520-3 1502 (1500-3)		
CIRCLING	1520-1 1/4 1500 (1500-1 1/4)	1520-1 1/2 1500 (1500-1 1/2)	1520-3 1500 (1500-3)	2400-3 2380 (2400-3)	2440-3 2420 (2500-3)



AK, 25 JAN 2024 to 21 MAR 2024

AK, 25 JAN 2024 to 21 MAR 2024

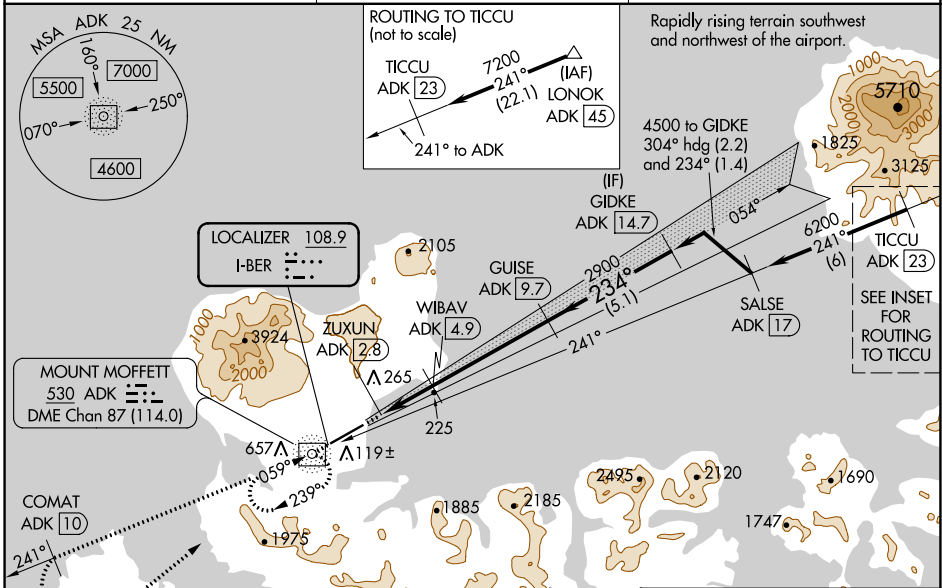
LOC I-BER	APP CRS	Rwy ldg	6190
108.9	234°	TDZE	18
		Apt Elev	20

ILS Z or LOC Z RWY 23

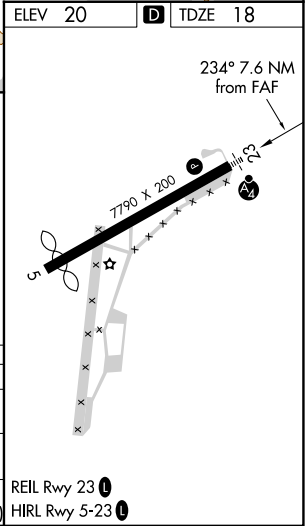
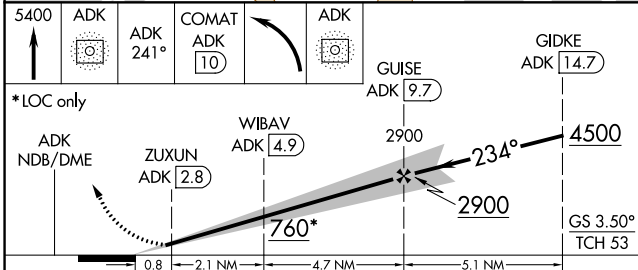
ADAK (ADK) (PADK)

ADF and DME required.	MALS 	MISSED APPROACH: Climb to 5400 direct ADK NDB/DME and on the 241° bearing from ADK NDB/DME to COMAT/ADK 10 DME and left turn direct ADK NDB/DME and hold. Missed approach requires minimum climb of 409 feet per NM to 2700; if unable to meet climb gradient, see ILS Y or LOC Y RWY 23.
 Circling NA at night. Circling NA northwest of Rwy 5-23. Rwy 23 helicopter visibility reduction below 3/4 SM NA. DME from ADK NDB. Simultaneous reception of I-BER and ADK DME required. Cat E for USAF/USN use only.		

AWOS-3P 134.5	ANCHORAGE CENTER 126.4 254.3	CTAF 122.9 0
-------------------------	----------------------------------------	------------------------



ELEV 20	D TDZE 18
---------	-----------



CATEGORY	A	B	C	D	E
S-ILS 23	309/50 291 (300-1)				
S-LOC 23	480/55	462 (500-1)	480-1 3/8 462 (500-1 3/8)		
CIRCLING	720-1	700 (700-1)	1060-3	2400-3	2440-3
			1040 (1100-3)	2380 (2400-3)	2420 (2500-3)

REIL Rwy 23 

HIRL Rwy 5-23 

AK, 25 JAN 2024 to 21 MAR 2024

AK, 25 JAN 2024 to 21 MAR 2024

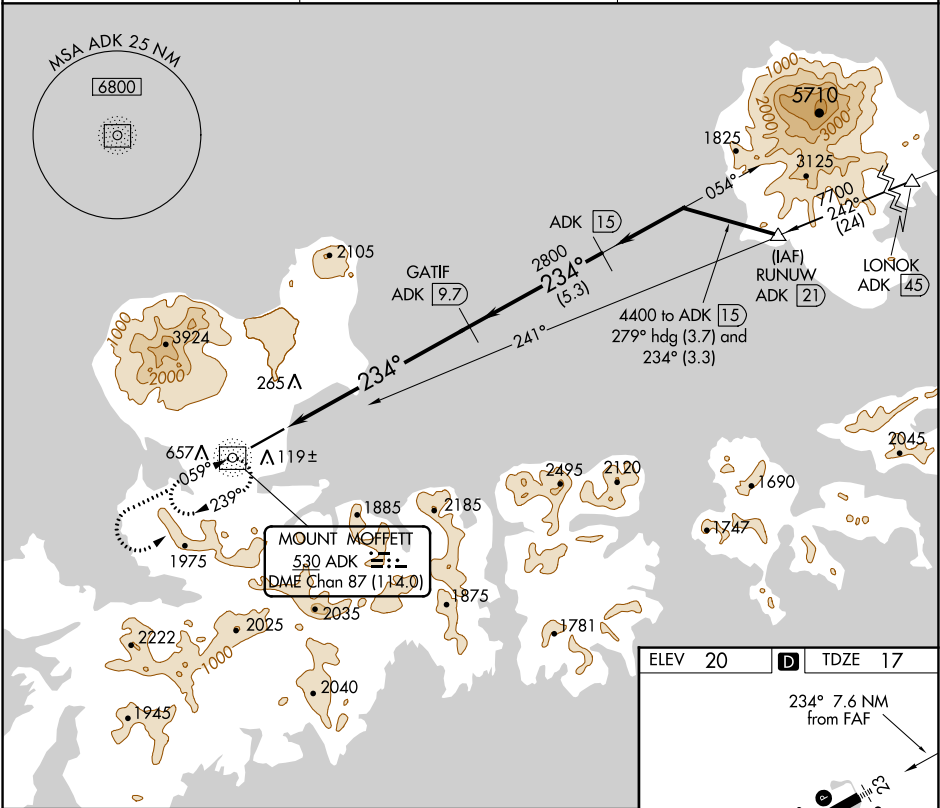
NDB/DME ADK 530	APP CRS 234°	Rwy ldg TDZE Apt Elev	6190 17 20
Chan 87 (114.0)			

NDB/DME RWY 23

ADAK (ADK)(PADK)

<p>Circling not authorized at night. Circling NA northwest of Rwy 5-23.</p>	<p>MALS</p>	<p>MISSED APPROACH: Climb to 5000 via direct ADK NDB/DME and ADK NDB/DME 234° bearing, then climbing left turn to 9000 direct ADK NDB/DME and hold.</p>

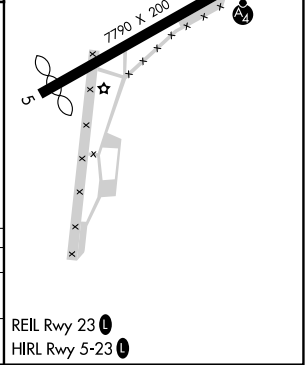
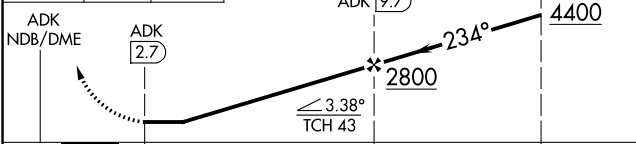
AWOS-3P 134.5	ANCHORAGE CENTER 126.4 254.3	CTAF 122.9
-------------------------	----------------------------------------	----------------------



AK, 25 JAN 2024 to 21 MAR 2024

AK, 25 JAN 2024 to 21 MAR 2024

5000	9000	ADK	VGSI and descent angles not coincident (VGSI Angle 3.50/TCH 53).	ADK 15
ADK 234°				



CATEGORY	A	B	C	D
S-23	1600/60 1583 (1600-1¼)	1600-1½ 1583 (1600-1½)	1600-3 1583 (1600-3)	
CIRCLING	1600-1¼ 1580 (1600-1¼)	1600-1½ 1580 (1600-1½)	1600-3 1580 (1600-3)	2540-3 2520 (3000-3)

REIL Rwy 23
HIRL Rwy 5-23

ADAK (ADK)(PADK) NDB/DME RWY 23

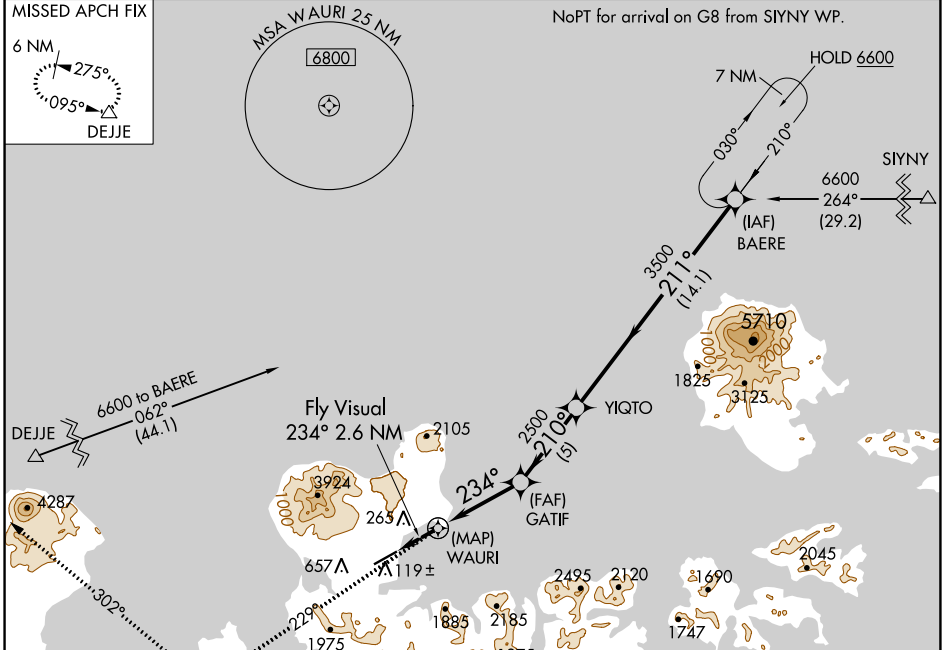
APP CRS	Rwy Idg	6190
234°	TDZE	17
	Apt Elev	20

RNAV (GPS) RWY 23

ADAK (ADK)(PADK)

RNP APCH-GPS.	MALS	MISSED APPROACH: Climb to 6600 on course 229° to XERIC, and right turn on course 302° to DEJJE and hold.
Circling not authorized at night. Circling NA northwest of Rwy 5-23.		

AWOS-3P 134.5	ANCHORAGE CENTER 126.4 254.3	CTAF 122.9
-------------------------	----------------------------------------	----------------------



AK, 25 JAN 2024 to 21 MAR 2024

AK, 25 JAN 2024 to 21 MAR 2024

ELEV 20	TDZE 17
Fly Visual 234° 2.6 NM	



6600	XERIC	DEJJE	BAERE
crs 229°			
	crs 302°		
Fly Visual 234° 2.6 NM	GATIF	YIQTO	6600
WAURI	2500	3500	Procedure Turn NA
	5 NM	5 NM	14.1 NM

CATEGORY	A	B	C	D
LNAV MDA	1220-3 1203 (1200-3)			
CIRCLING	1220-3	1200 (1200-3)	NA	

REIL Rwy 23


HIRL Rwy 5-23


TACAN BER Chan 77 (113.0)	APP CRS 233°	Rwy ldg 6190 TDZE 17 Apt Elev 20
-----------------------------------------------	------------------------	-------------------------------------------------------------

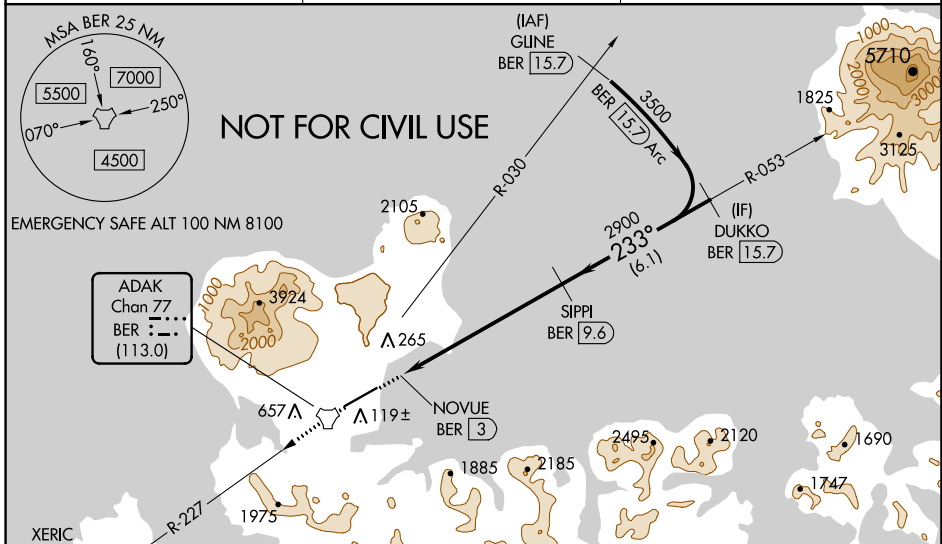
TACAN RWY 23

ADAK (ADK)(PADK)

▼ Circling NA northwest of Rwy 5-23. Rwy 23 helicopter visibility reduction below RVR 5000 NA. Straight-in Rwy 23 at night, operational VGSI required, remain on or above VGSI glidepath until threshold.
▲ USAF only: When VGSI inop, Straight-in Rwy 23 authorized at night with command approval.
 Circling NA at night - unlit terrain 21 feet MSL 200 feet from threshold, 551 feet right of centerline. For inop ALS, increase S-23* Cat C/D/E visibility to 2½ SM.

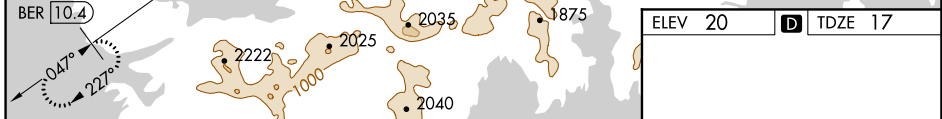
MALS 
MISSED APPROACH: Climb to 4300 direct BER TACAN and continue on BER R-227 direct XERIC/BER 10.4 DME and hold, continue climb-in-hold to 4300.
 *Missed approach requires minimum climb of 375 feet per NM to 2800.

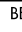
AWOS-3P 134.5	ANCHORAGE CENTER 126.4 254.3	CTAF 122.9 
-------------------------	----------------------------------------	--------------------------------------------------------------------------------------------------------



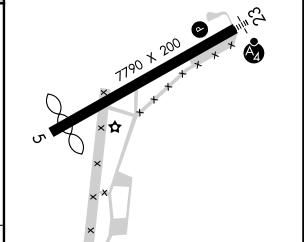
AK, 25 JAN 2024 to 21 MAR 2024

AK, 25 JAN 2024 to 21 MAR 2024



4300	BER 	BER R-227	XERIC BER 10.4	DUKKO BER 15.7
TACAN	NOVUE BER 3	≤ 3.50° TCH 53		2900
1 NM		6.6 NM		6.1 NM

ELEV 20	D TDZE 17
---------	------------------



CATEGORY	A	B	C	D	E
s-23*	800/50	783 (800-1)	800-2	783 (800-2)	
s-23	1620-1¼ 1603 (1600-1¼)	1620-1½ 1603 (1600-1½)	1620-3	1603 (1600-3)	
C CIRCLING	1620-1¼ 1600 (1600-1¼)	1620-1½ 1600 (1600-1½)	1620-3 1600 (1600-3)	2440-3	2420 (2500-3)

REIL Rwy 23 
 HIRL Rwy 5-23 