

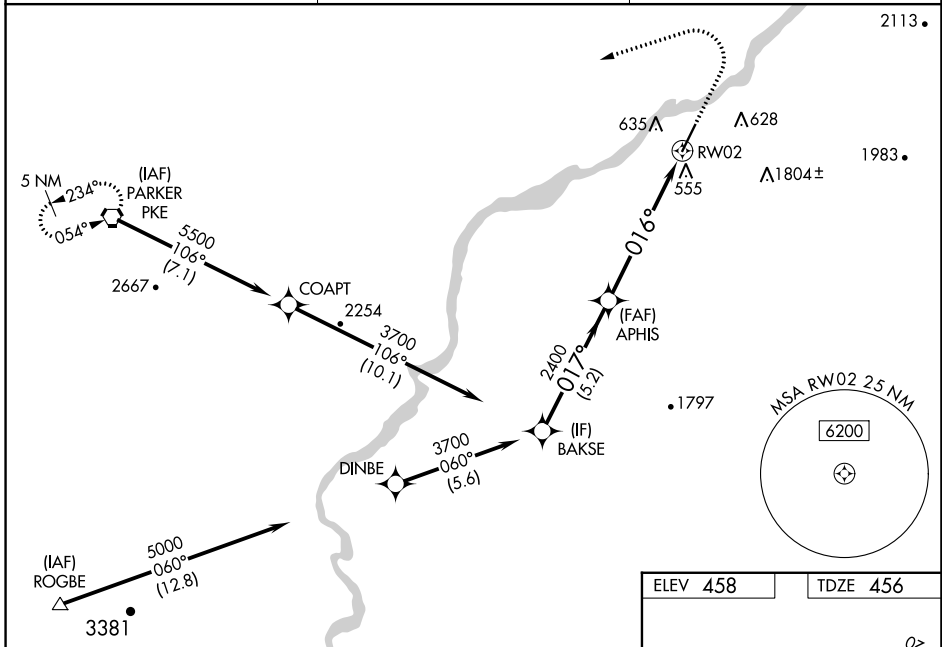
WAAS CH 72936 W02A	APP CRS 016°	Rwy Idg TDZE Apt Elev	6250 456 458
--	------------------------	-----------------------------	---

RNAV (GPS) RWY 2

AVI SUQUILLA (P2 \emptyset)

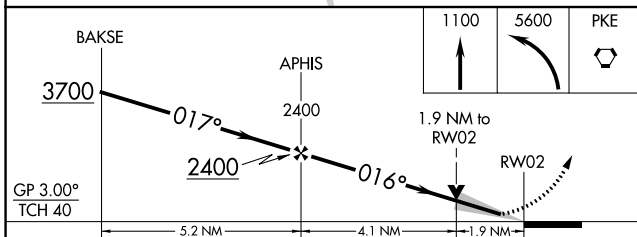
RNP APCH - GPS.		<p>MISSED APPROACH: (Do not exceed 180K until PKE VORTAC) Climb to 1100, then climbing left turn to 5600 direct PKE VORTAC and hold, continue climb-in-hold to 5600.</p>
<p>⚠ NA For uncompensated Baro-VNAV systems, LNAV/VNAV NA below -15°C or above 54°C. Baro-VNAV and VDP NA when using Blythe altimeter setting. When local altimeter setting not received, use Blythe altimeter setting and increase LPV DA to 804 feet and all visibilities ¼ SM. Increase LNAV/VNAV DA to 1018 feet and all visibilities ¼ SM. Increase all MDAs 100 feet and LNAV visibility Cat B/C ¼ SM, and Circling visibility Cat B ¼ SM.</p>		

AWOS-3PT 132.75	LOS ANGELES CENTER 128.15 285.6	UNICOM 122.725 (CTAF) \emptyset
---------------------------	---	--

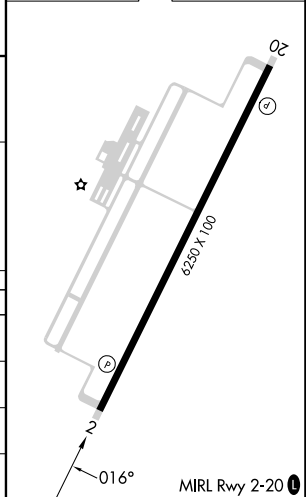


SW-4, 22 FEB 2024 to 21 MAR 2024

SW-4, 22 FEB 2024 to 21 MAR 2024



ELEV 458	TDZE 456
----------	----------



CATEGORY	A	B	C	D
LPV DA	706-¾ 250 (300-¾)			NA
LNAV/VNAV DA	920-1⅜ 464 (500-1⅜)			NA
LNAV MDA	1100-1	644 (700-1)	1100-3 644 (700-3)	NA
C CIRCLING	1100-1	642 (700-1)	1580-3 1122 (1200-3)	NA

VORTAC PKE 117.9 Chan 126	APP CRS 067°	Rwy Idg TDZE Apt Elev N/A N/A 458
---	------------------------	---

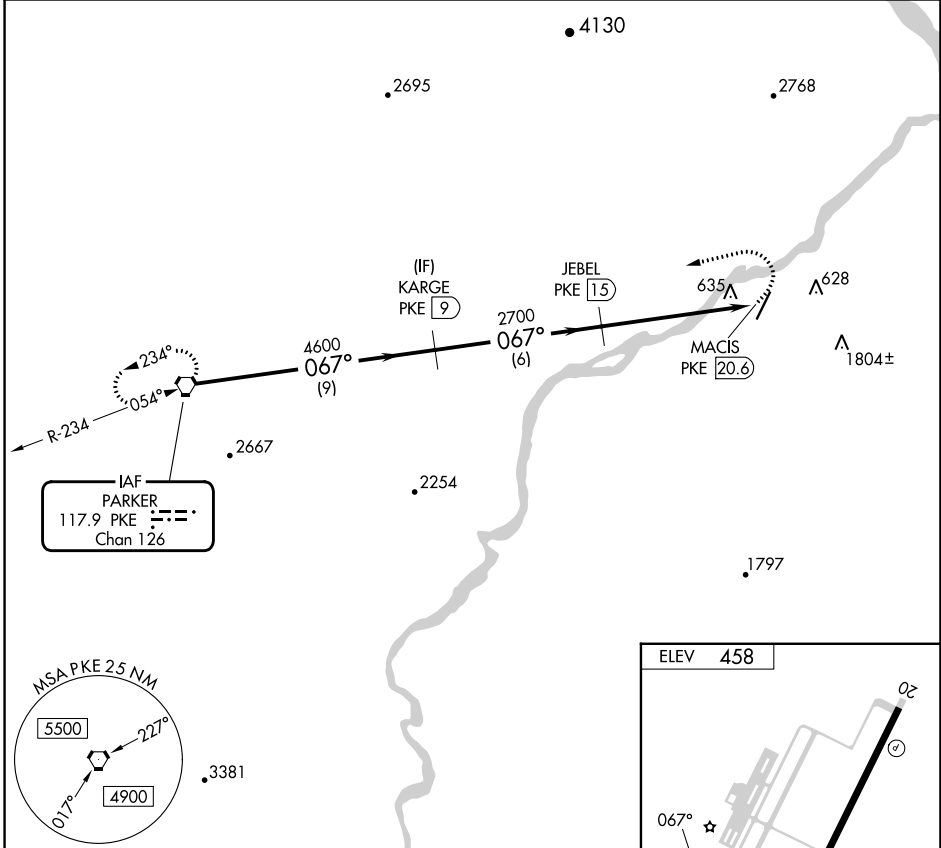
VOR/DME-A

AVI SUQUILLA (P2 \emptyset)

V When local altimeter setting not received, use Blythe altimeter setting and increase all MDA 100 feet.

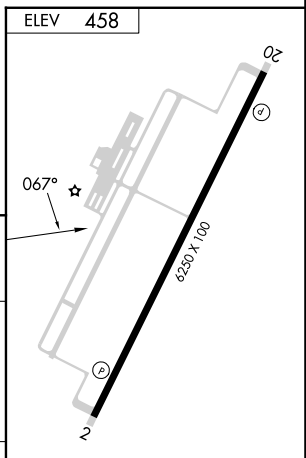
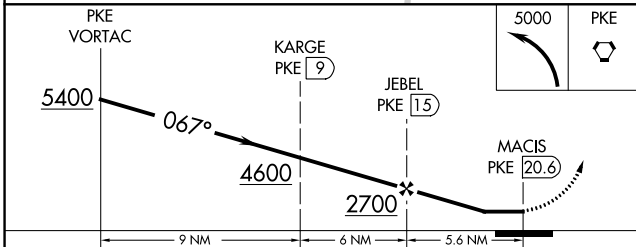
NA MISSED APPROACH: Climbing left turn to 5000 direct PKE VORTAC and hold.

AWOS-3PT 132.75	LOS ANGELES CENTER 128.15 285.6	UNICOM 122.725 (CTAF) \emptyset
---------------------------	---	---



SW-4, 22 FEB 2024 to 21 MAR 2024

SW-4, 22 FEB 2024 to 21 MAR 2024



CATEGORY	A	B	C	D
C CIRCLING	1900-1¼ 1442 (1500-1¼)	1900-1½ 1442 (1500-1½)	1900-3 1442 (1500-3)	NA

MRL Rwy 2-20 \emptyset