

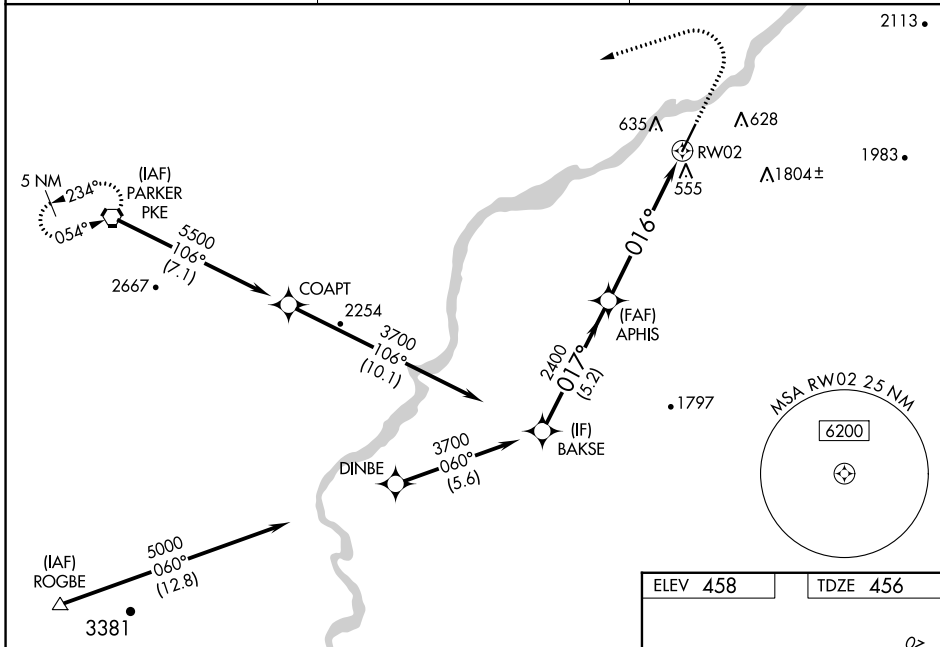
WAAS CH <b>72936</b> <b>W02A</b>	APP CRS <b>016°</b>	Rwy Idg TDZE Apt Elev	<b>6250</b> <b>456</b> <b>458</b>
--	------------------------	-----------------------------	---

# RNAV (GPS) RWY 2

AVI SUQUILLA (P2 $\emptyset$ )

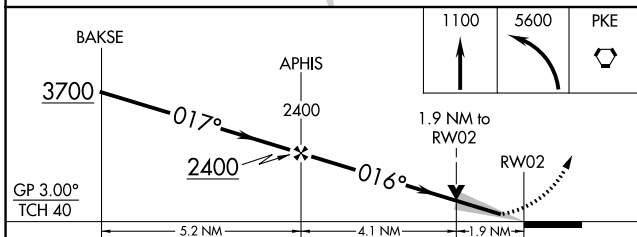
RNP APCH - GPS.		<p>MISSED APPROACH: (Do not exceed 180K until PKE VORTAC) Climb to 1100, then climbing left turn to 5600 direct PKE VORTAC and hold, continue climb-in-hold to 5600.</p>
<p><b>⚠</b> <b>NA</b> For uncompensated Baro-VNAV systems, LNAV/VNAV NA below -15°C or above 54°C. Baro-VNAV and VDP NA when using Blythe altimeter setting. When local altimeter setting not received, use Blythe altimeter setting and increase LPV DA to 804 feet and all visibilities ¼ SM. Increase LNAV/VNAV DA to 1018 feet and all visibilities ¼ SM. Increase all MDAs 100 feet and LNAV visibility Cat B/C ¼ SM, and Circling visibility Cat B ¼ SM.</p>		

AWOS-3PT <b>132.75</b>	LOS ANGELES CENTER <b>128.15 285.6</b>	UNICOM <b>122.725 (CTAF) <math>\emptyset</math></b>
---------------------------	---	--

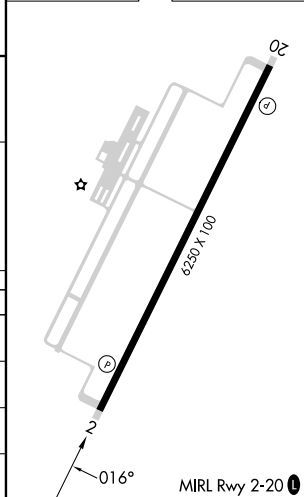


SW-4, 22 FEB 2024 to 21 MAR 2024

SW-4, 22 FEB 2024 to 21 MAR 2024



ELEV 458	TDZE 456
----------	----------



CATEGORY	A	B	C	D
LPV DA		706-3/4	250 (300-3/4)	NA
LNAV/VNAV DA		920-13/8	464 (500-13/8)	NA
LNAV MDA	1100-1	644 (700-1)	1100-3 644 (700-3)	NA
<b>C</b> CIRCLING	1100-1	642 (700-1)	1580-3 1122 (1200-3)	NA