

VORTAC FBC <b>108.2</b> Chan <b>19</b>	APP CRS <b>298°</b>	Rwy Idg TDZE Apt Elev	<b>4502</b> <b>763</b> <b>763</b>
--	------------------------	-----------------------------	---

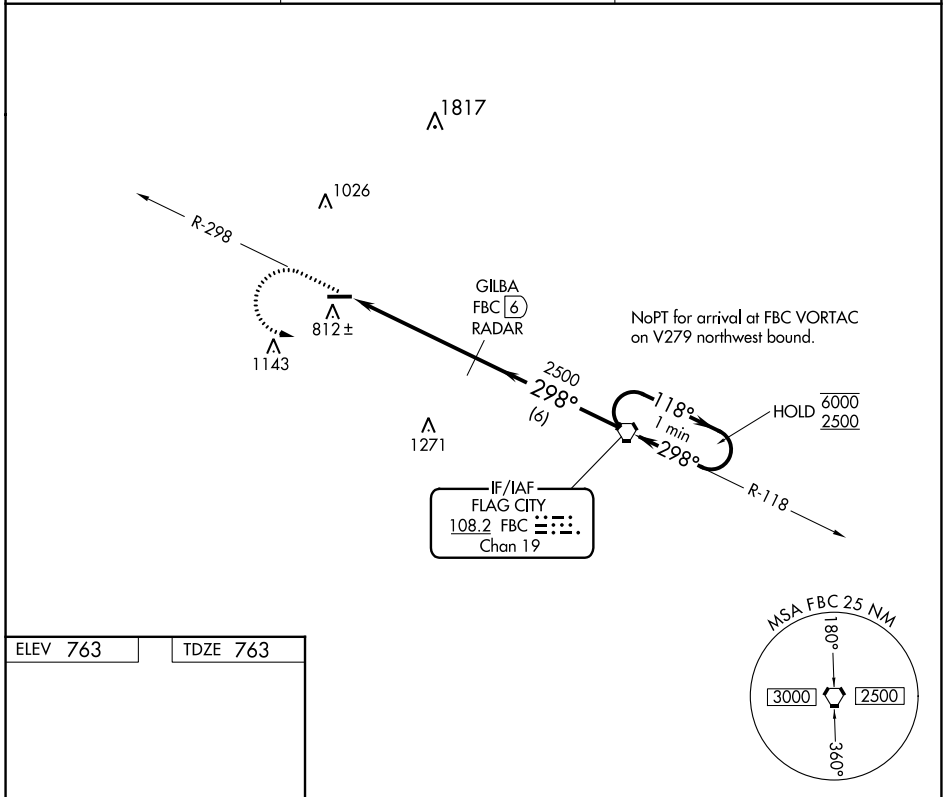
**VOR RWY 27**  
PUTNAM COUNTY (OWX)

RADAR or DME required.

▼ Rwy 27 helicopter visibility reduction below 1 SM NA.  
▲ NA Straight-in, Circling Rwy 27 NA at night.

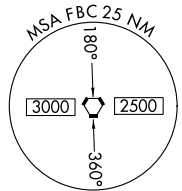
MISSED APPROACH: Climb to 2500 on FBC VORTAC R-298 then left turn direct FBC VORTAC and hold.

AWOS-3 <b>120.525</b>	TOLEDO APP CON <b>120.8 317.55</b>	UNICOM <b>122.7 (CTAF) 0</b>
--------------------------	---------------------------------------	---------------------------------



ELEV 763	TDZE 763
REIL Rwys 9 and 27 MRL Rwy 9-27	
FAF to MAP 5 NM	
Knots	60 90 120 150 180
Min:Sec	5:00 3:20 2:30 2:00 1:40

2500	FBC	GILBA FBC (6) RADAR	FBC VORTAC	One Minute Holding Pattern
FBC R-298				
FBC (11)		2500	298°	118° → 6000 ← 298° 2500
		≤ 3.18° TCH 44		
		5 NM	6 NM	
CATEGORY	A	B	C	D
S-27	1220-1	457 (500-1)		NA
CIRCLING	1220-1	457 (500-1)		NA



EC-2, 22 FEB 2024 to 21 MAR 2024

EC-2, 22 FEB 2024 to 21 MAR 2024