

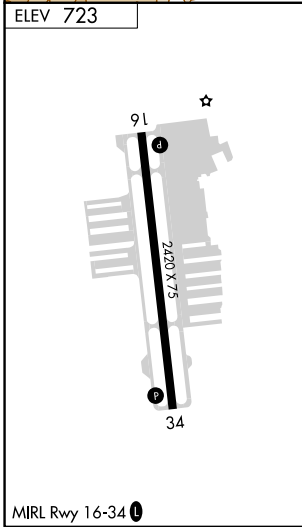
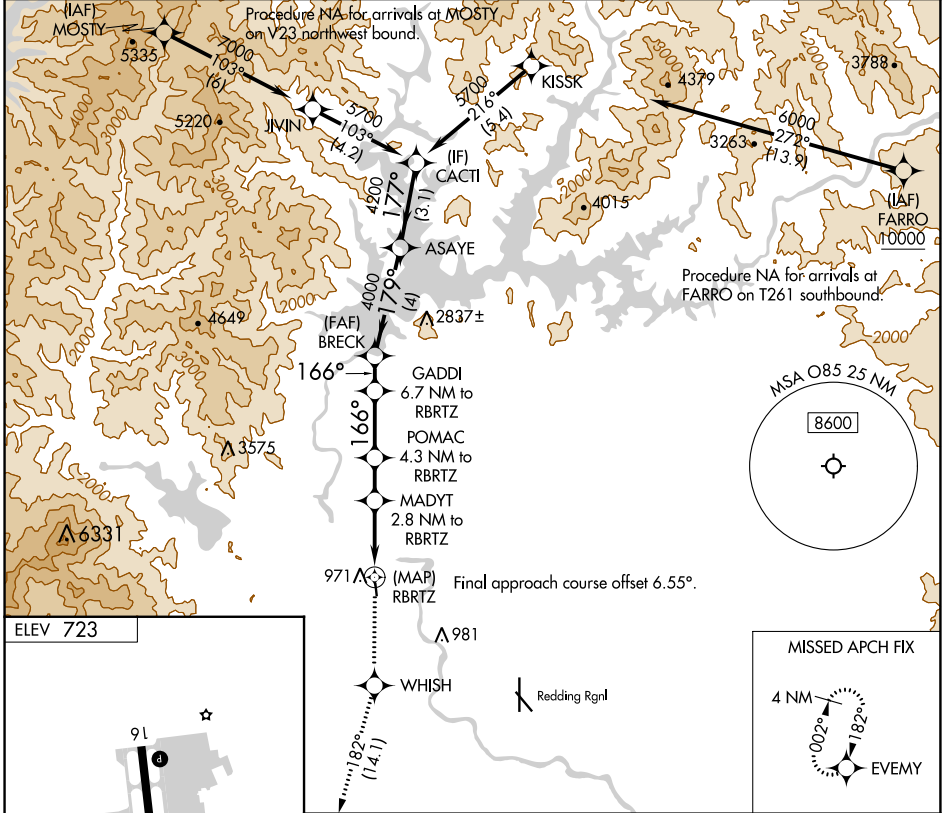
APP CRS	Rwy Idg	N/A
166°	TDZE	N/A
	Apt Elev	723

# RNAV (GPS)-A

BENTON FLD (O85)

RNP APCH - GPS.	MISSED APPROACH: Climb to 4000 direct WHISH and on track 182° to EVMY and hold.
<p>Procedure NA at night. Rwy 16, 34 helicopter visibility reduction below 1 SM NA. When local altimeter setting not received, use Redding Rgnl altimeter setting and increase all MDAs 60 feet.</p>	

AWOS-2 <b>118.675</b>	OAKLAND CENTER <b>132.2 350.3</b>	UNICOM <b>122.8 (CTAF) 0</b>
--------------------------	--------------------------------------	---------------------------------



4000	WHISH	EVMY	VGSI and descent angles not coincident (VGSI Angle 3.50/TCH 24).	
↑	182°	182°	GADDI 6.7 NM to RBRTZ	CACTI 5700
			BRECK	ASAYE 4200
			POMAC 4.3 NM to RBRTZ	
			MADYT 2.8 NM to RBRTZ	
			RBRTZ	
			1960	2560
			3.70°	179°
			TCH 60	3500
			166°	4000
			2.8 NM	1.5 NM
			2.4 NM	1.3 NM
			4 NM	3.1 NM
CATEGORY	A	B	C	D
CIRCLING	1340-1 617 (700-1)	1600-1¼ 877 (900-1¼)	NA	

SW-2, 22 FEB 2024 to 21 MAR 2024

SW-2, 22 FEB 2024 to 21 MAR 2024

APP CRS	Rwy Idg TDZE	N/A
340°	Apt Elev	723

# RNAV (GPS)-B

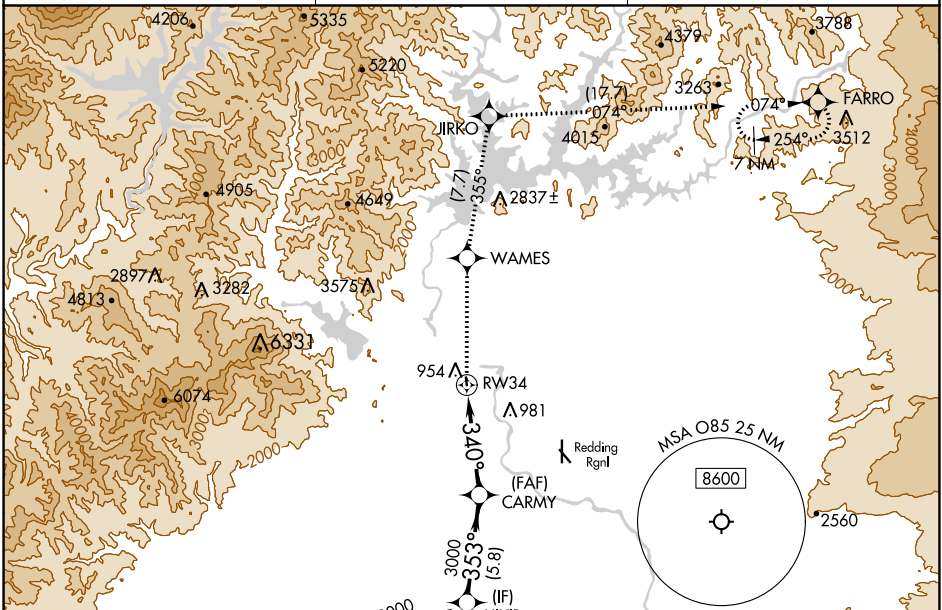
BENTON FLD (O85)

RNP APCH - GPS.

Procedure NA at night. Rwy 16, 34 helicopter visibility reduction below 1 SM NA. When local altimeter setting not received, use Redding Rgnl altimeter setting and increase all MDAs 60 feet.

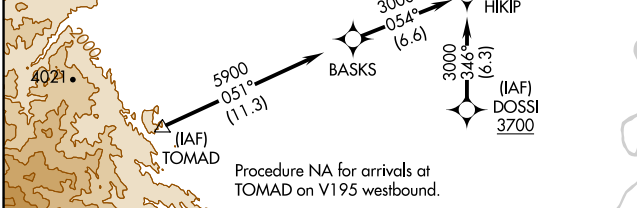
MISSED APPROACH: Climb to 10000 direct WAMES and on track 355° to JIRKO and on track 074° to FARRO and hold, continue climb-in-hold to 10000.

AWOS-2 <b>118.675</b>	OAKLAND CENTER <b>132.2 350.3</b>	UNICOM <b>122.8 (CTAF)</b>
--------------------------	--------------------------------------	-------------------------------

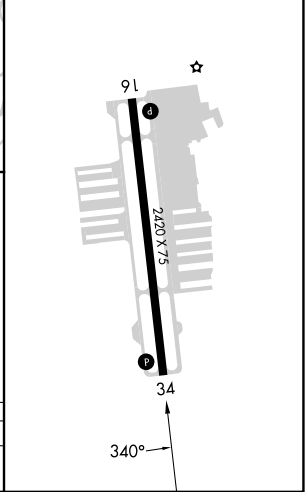


SW-2, 22 FEB 2024 to 21 MAR 2024

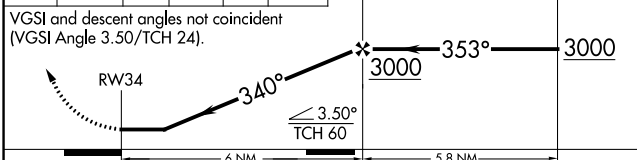
SW-2, 22 FEB 2024 to 21 MAR 2024



ELEV 723	MIRL Rwy 16-34
----------	----------------



10000	WAMES	tr	JIRKO	tr	FARRO	CARMY	HIPIP
↑	◆	355°	◆	074°	◆		



CATEGORY	A	B	C	D
CIRCLING	1900-1¼ 1177 (1200-1¼)	1900-1½ 1177 (1200-1½)	NA	