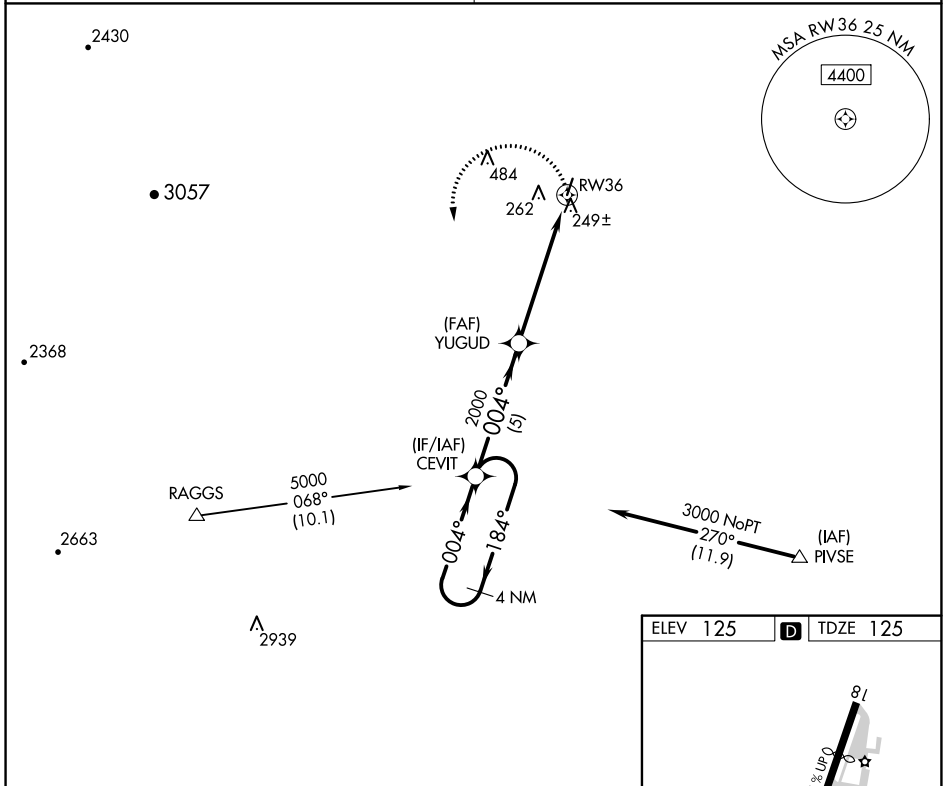


APP CRS	Rwy Idg	3244
004°	TDZE	125
	Apt Elev	125

RNAV (GPS) RWY 36

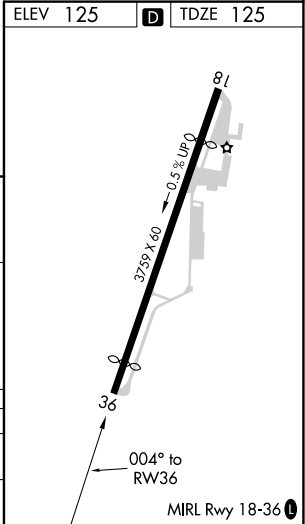
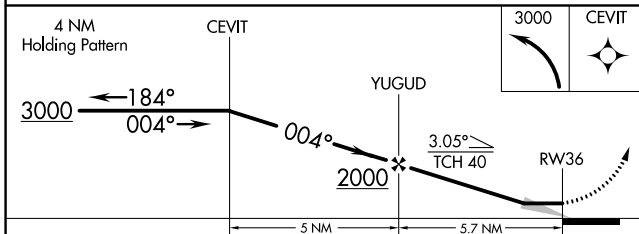
WATTS-WOODLAND (O41)

<p>NA DME/DME RNP- 0.3 NA. Procedure NA at night. Use Sacramento Intl altimeter setting; when not received, use Sacramento Exec altimeter setting and increase all MDA 20 feet.</p>	<p>MISSED APPROACH: Climbing left turn to 3000 direct CEVIT and hold.</p>
<p>TRAVIS APP CON 126.6 281.45</p>	<p>UNICOM 122.8 (CTAF)</p>



SW-2, 27 JAN 2022 to 24 FEB 2022

SW-2, 27 JAN 2022 to 24 FEB 2022



CATEGORY	A	B	C	D
RNAV MDA	560-1	435 (500-1)		NA
CIRCLING	620-1	495 (500-1)		NA