

# KANEOHE FIVE DEPARTURE (OBSTACLE) (NGF5•SOK)

MOKAPU POINT, OAHU I, HAWAII

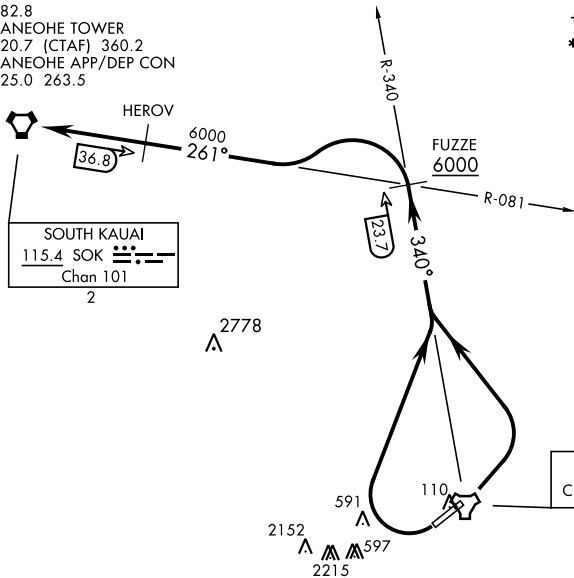
ATIS 284.5  
 CLNC DEL  
 294.7  
 GND CON  
 382.8  
 KANEOHE TOWER  
 120.7 (CTAF) 360.2  
 KANEOHE APP/DEP CON  
 125.0 263.5

AL-757 [USN]

Rwy	Knots	60	120	180	240	300	360
04†	V/V(fpm)	247	494	741	988	1235	1482
22*	V/V(fpm)	975	1950	2925	3900	4875	5850

† ATC Climb Rate to 6000  
 \* Minimum Climb Rate to 3900

Rwy 04: Advise ATC if unable to cross FUZZE at or above 6000



CAUTION:  
 Mountainous terrain  
 E, S and W of airfield.

NOTE: Chart not to scale.

TA 18,000

## DEPARTURE ROUTE DESCRIPTION

**TAKE-OFF RWY 4:** Turn left to intercept NGF TACAN R-340 to FUZZE, then intercept SOK VORTAC R-081 to SOK. Cross FUZZE at or above 6000.

**TAKE-OFF RWY 22:** Turn right as soon as practicable to intercept NGF TACAN R-340 to FUZZE, then intercept SOK VORTAC R-081 to SOK.