

NANDR TWO DEPARTURE (RNAV)

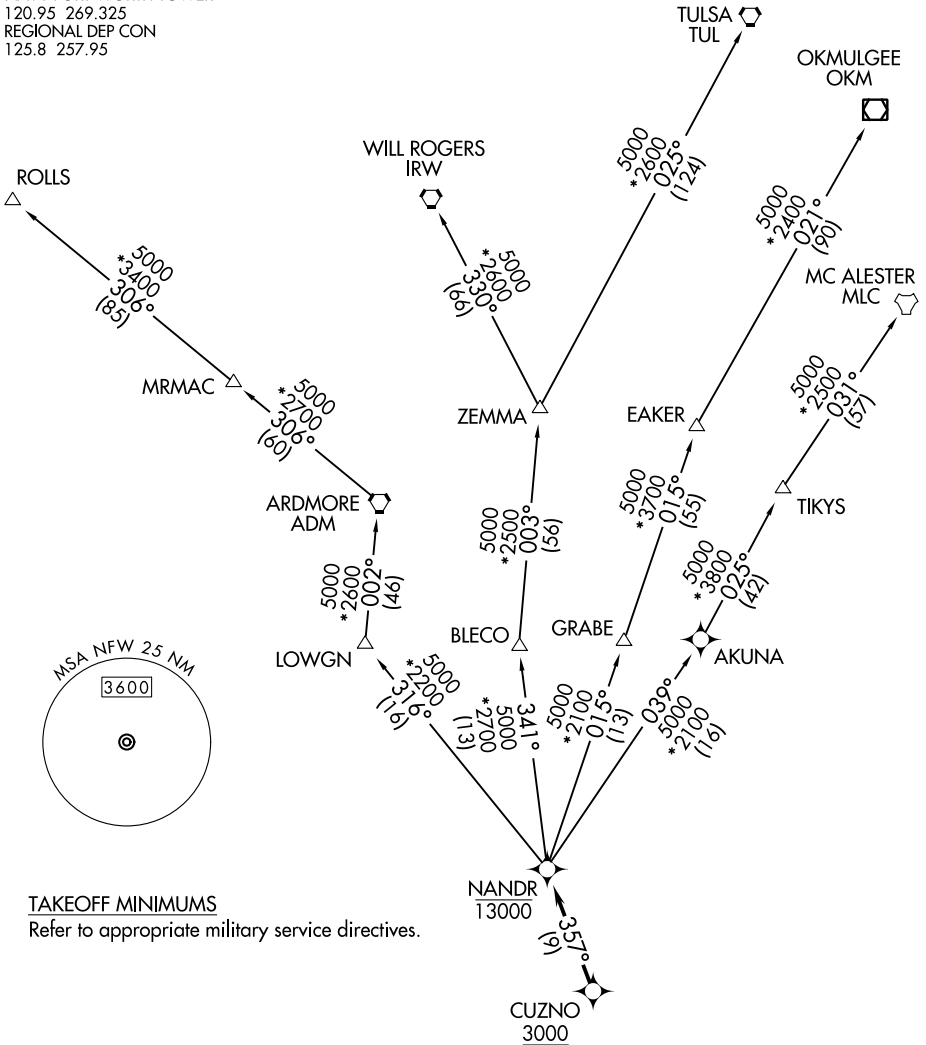
FORT WORTH, TEXAS

ATIS★
 351.675
 GND CON
 121.675 279.575
 NAVY FORT WORTH TOWER★
 120.95 269.325
 REGIONAL DEP CON
 125.8 257.95

RNAV 1 - DME/DME/IRU or GPS.

RADAR required.

**TOP ALTITUDE:
ASSIGNED BY ATC**



TAKEOFF MINIMUMS

Refer to appropriate military service directives.

NOTE: EAKER transition: For TUL terminal arrivals only.
 NOTE: TULSA transition: For all aircraft overflying TUL VORTAC.
 NOTE: Aircraft arriving to the Oklahoma City terminal area, file and expect the ZEMMA enroute transition.

NOTE: Chart not to scale.

(NARRATIVE ON FOLLOWING PAGE)

NANDR TWO DEPARTURE (RNAV)

FORT WORTH, TEXAS

SC-2, 22 FEB 2024 to 21 MAR 2024

SC-2, 22 FEB 2024 to 21 MAR 2024



DEPARTURE ROUTE DESCRIPTION

TAKEOFF RUNWAY 18: Climb on heading 177° or as assigned by ATC, thence
TAKEOFF RUNWAY 36: Climb on heading 357° or as assigned by ATC, thence

. . . . expect RADAR vectors to cross CUZNO at or above 3000, then on track 357°
to cross NANDR at or below 13000, then on assigned transition.

- EAKER TRANSITION (NANDR2.EAKER)
- MC ALESTER TRANSITION (NANDR2.MLC)
- OKMULGEE TRANSITION (NANDR2.OKM)
- ROLLS TRANSITION (NANDR2.ROLLS)
- TULSA TRANSITION (NANDR2.TUL)
- WILL ROGERS TRANSITION (NANDR2.IRW)
- ZEMMA TRANSITION (NANDR2.ZEMMA)

SC-2, 22 FEB 2024 to 21 MAR 2024

SC-2, 22 FEB 2024 to 21 MAR 2024