

APP CRS <b>227°</b>	Rwy Idg TDZE Apt Elev	<b>4301</b> <b>726</b> <b>730</b>
------------------------	-----------------------------	---

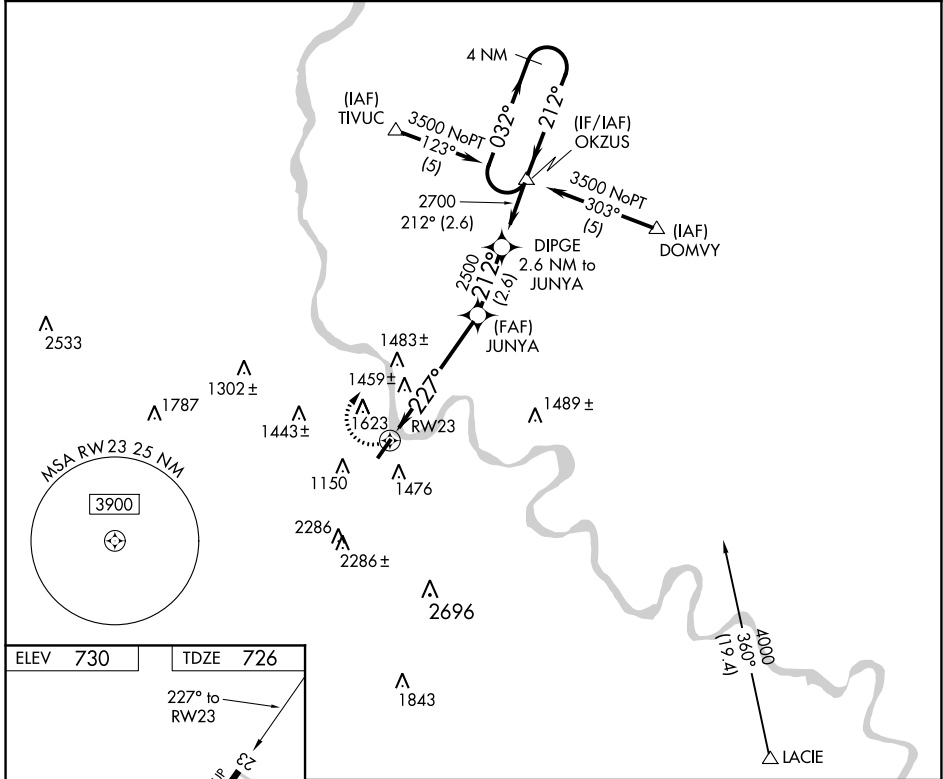
# RNAV (GPS) RWY 23

BRADFORD COUNTY (N27)

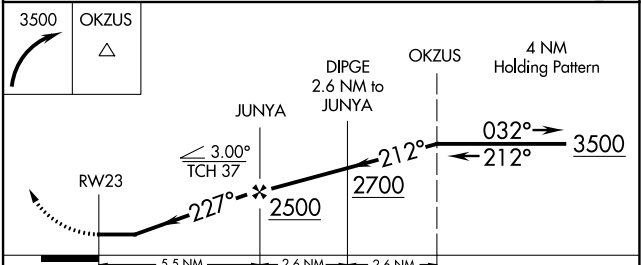
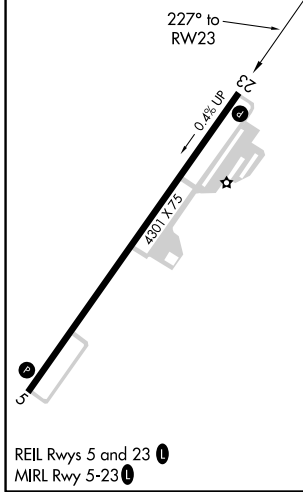
**NA** When local altimeter setting not received, use Elmira altimeter setting and increase all MDAs 40 feet. GPS or RNP-0.3 required. DME/DME RNP-0.3 NA. Night landing: RWY 5 NA. Helicopter visibility reduction below 3/4 SM NA.

**MISSED APPROACH:** Climbing right turn to 3500 direct OKZUS WP and hold.

AWOS-3 <b>119.925</b>	BINGHAMTON APP CON <b>118.6 257.625</b>	UNICOM <b>123.0 (CTAF)</b>
--------------------------	--	-------------------------------



ELEV 730	TDZE 726
----------	----------



CATEGORY	A	B	C	D
LNAV MDA	1800-1¼ 1074 (1100-1¼)	1800-1½ 1074 (1100-1½)		NA
<b>CIRCLING</b>	2020-1¼ 1290 (1300-1¼)	2020-1½ 1290 (1300-1½)		NA

NE-4, 19 MAY 2022 to 16 JUN 2022

NE-4, 19 MAY 2022 to 16 JUN 2022

APP CRS	Rwy Idg	N/A
047°	TDZE	N/A
	Apt Elev	730

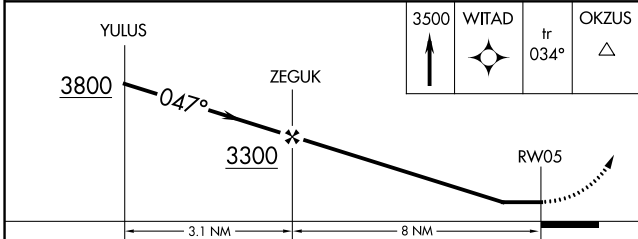
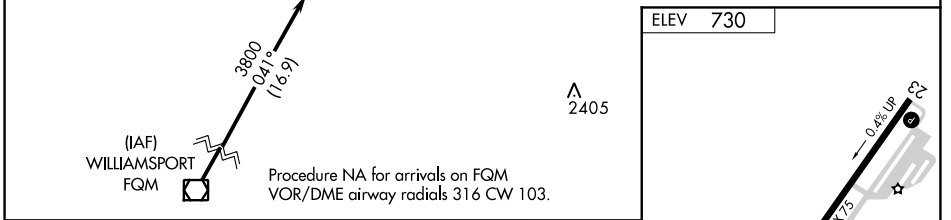
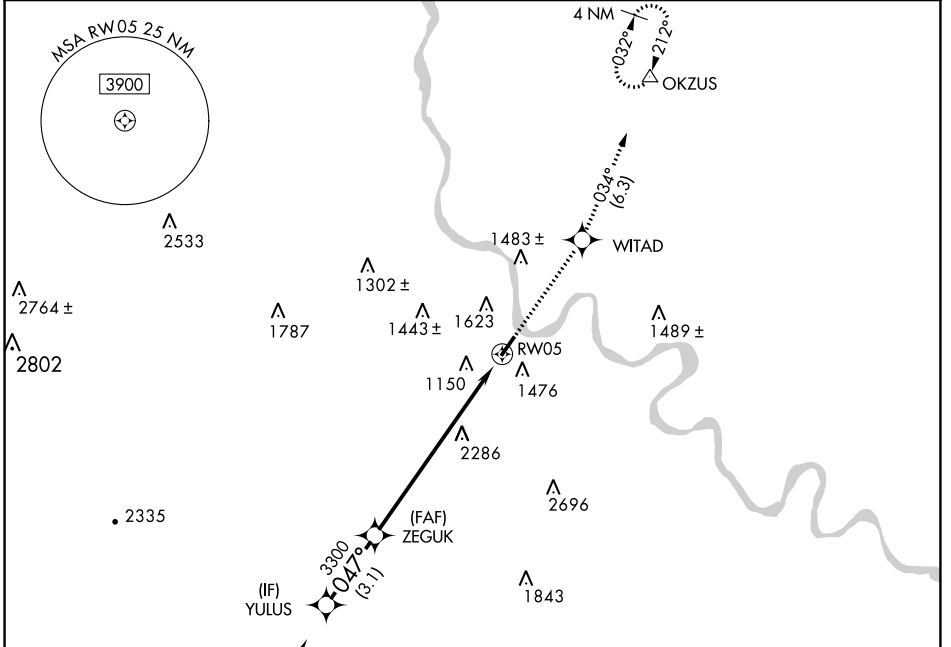
# RNAV (GPS)-A

BRADFORD COUNTY (N27)

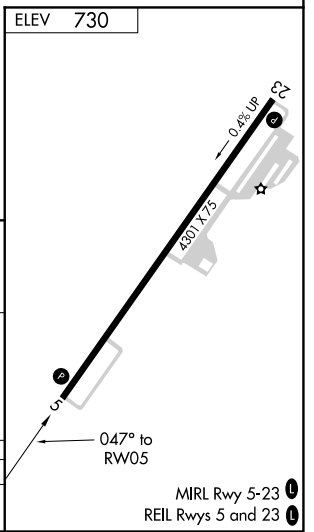
**NA** DME/DME RNP-0.3 NA. Visibility reduction by helicopters NA. When local altimeter setting not received, use Elmira altimeter setting and increase all MDAs 40 feet. Procedure NA at night.

**MISSED APPROACH:** Climb to 3500 direct WITAD and on track 034° to OKZUS and hold.

AWOS-3 <b>119.925</b>	BINGHAMTON APP CON <b>118.6 257.625</b>	UNICOM <b>123.0 (CTAF) 0</b>
--------------------------	--	---------------------------------



CATEGORY	A	B	C	D
CIRCLING	2760-1¼ 2030 (2100-1¼)	2760-1½ 2030 (2100-1½)		NA



NE-4, 19 MAY 2022 to 16 JUN 2022

NE-4, 19 MAY 2022 to 16 JUN 2022

MIRL Rwy 5-23 0  
REIL Rwys 5 and 23 0