

# RNAV (GPS) RWY 24

LAKEWOOD (N12)

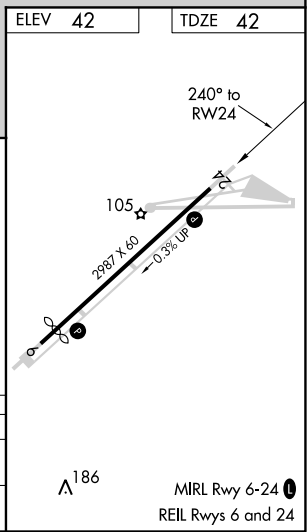
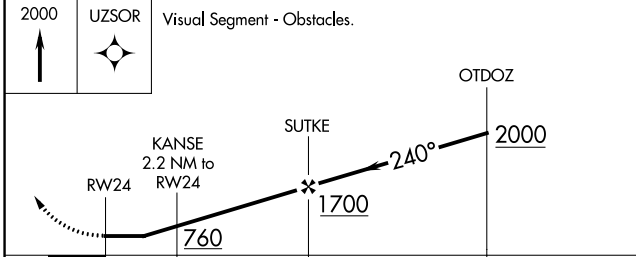
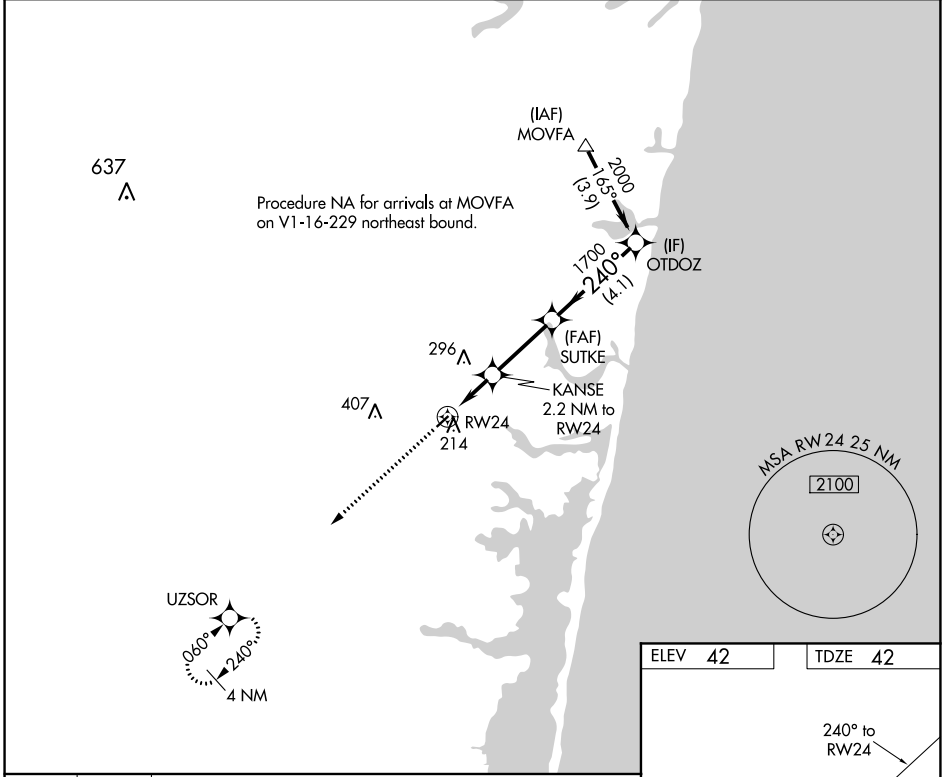
APP CRS	Rwy Idg	<b>2987</b>
<b>240°</b>	TDZE	<b>42</b>
	Apt Elev	<b>42</b>

RNP APCH.

**NA** Procedure NA at night. When local altimeter setting not received, use Lakehurst altimeter setting and increase all MDA 40 feet. Rwy 24 helicopter visibility reduction below 1 SM NA.

MISSED APPROACH:  
Climb to 2000 direct UZSOR and hold.

AWOS-AV <b>122.8</b>	MC GUIRE APP CON <b>126.475 363.8</b>	GCO <b>121.725</b>	UNICOM <b>122.8 (CTAF)</b>
-------------------------	--	-----------------------	-------------------------------



CATEGORY	A	B	C	D
LNVA MDA	520-1	478 (500-1)		NA
CIRCLING	540-1 498 (500-1)	620-1 578 (600-1)		NA

NE-2, 08 SEP 2022 to 06 OCT 2022

NE-2, 08 SEP 2022 to 06 OCT 2022

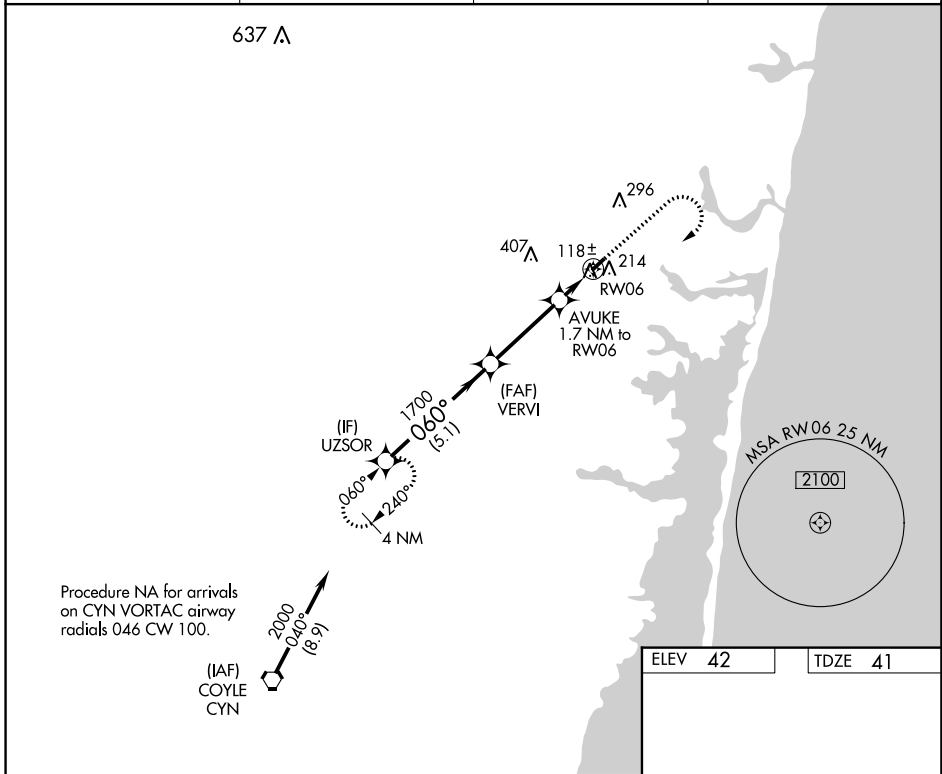
WAAS CH <b>49038</b> <b>W06A</b>	APP CRS <b>060°</b>	Rwy Idg TDZE <b>41</b> Apt Elev <b>42</b>	<b>2726</b>
--	------------------------	---	-------------

# RNAV (GPS) RWY 6

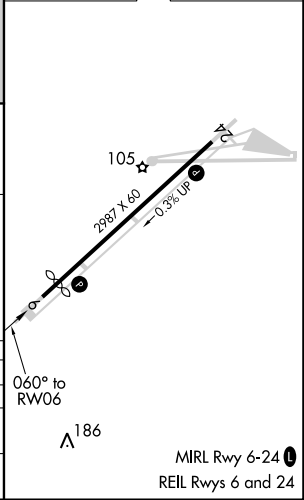
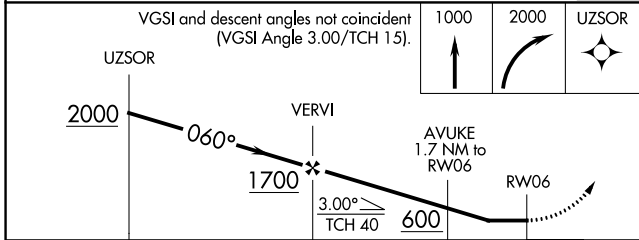
LAKEWOOD (N12)

<p><b>▼</b> DME/DME RNP-0.3 NA. Procedure NA at night. Helicopter visibility reduction below 1 SM NA. When local altimeter setting not received, use Lakehurst altimeter setting and increase all MDA 40 feet.</p> <p><b>▲</b> NA</p>	<p>MISSED APPROACH Climb to 1000 then climbing right turn to 2000 direct UZSOR and hold.</p>
---	--

AWOS-AV <b>122.8</b>	MC GUIRE APP CON <b>126.475 363.8</b>	GCO <b>121.725</b>	UNICOM <b>122.8 (CTAF)</b>
-------------------------	--	-----------------------	-------------------------------



ELEV 42	TDZE 41
---------	---------



CATEGORY	A	B	C	D
LP MDA	380-1	339 (400-1)		NA
LNAV MDA	580-1	539 (600-1)		NA
<b>C</b> CIRCLING	580-1 538 (600-1)	620-1 578 (600-1)		NA

NE-2, 08 SEP 2022 to 06 OCT 2022

NE-2, 08 SEP 2022 to 06 OCT 2022